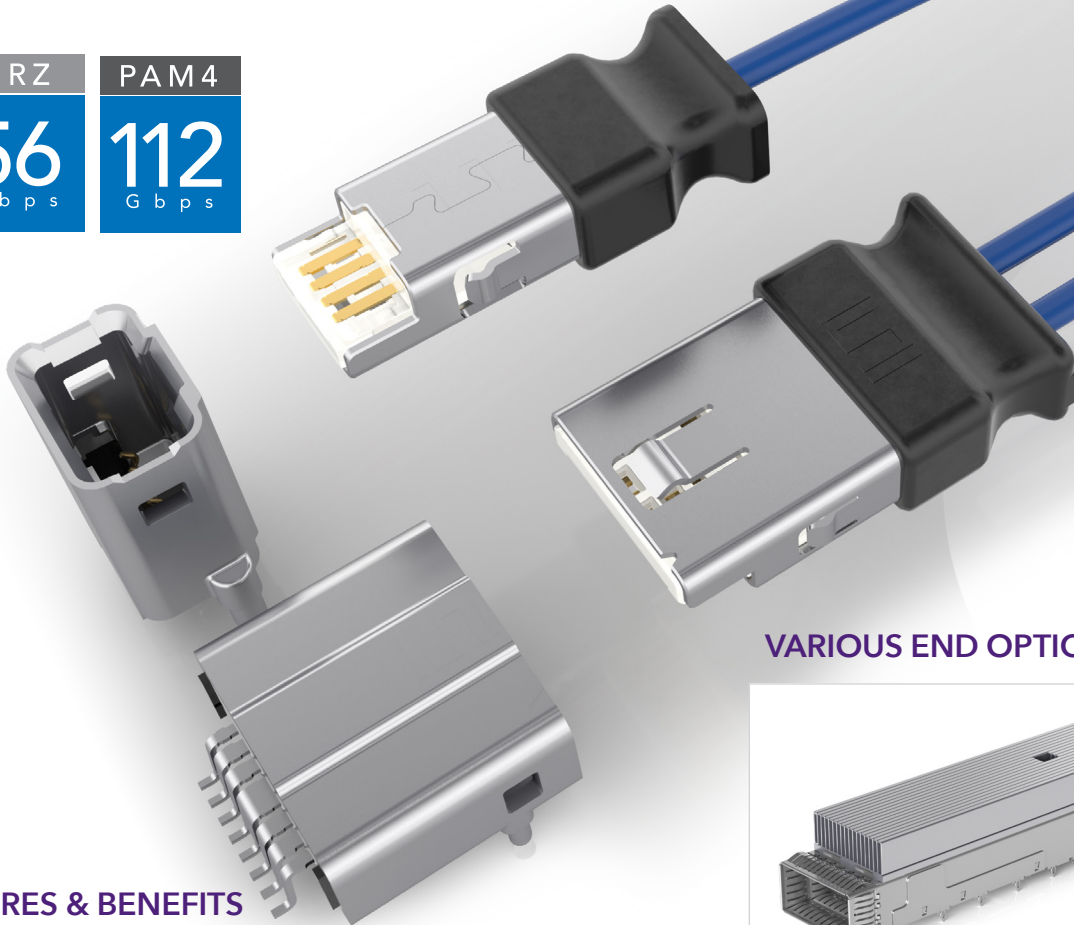


ACCELERATE[®] mini

EXTREME PERFORMANCE, MINI FORM FACTOR CABLE

(0.635 mm) .025" PITCH

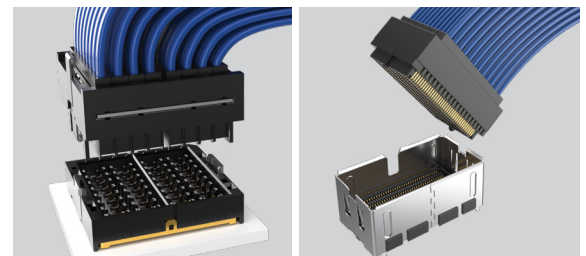
NRZ	PAM4
56 Gbps	112 Gbps



VARIOUS END OPTIONS AVAILABLE



800G Flyover[®] QSFP Double Density



Si-Fly[™] HD

AcceleRate[®] HP Gen 2

FEATURES & BENEFITS

- 112 Gbps PAM4 performance
- Eye Speed[®] 34 AWG, 92 Ω Thinax[™] ultra performance twinax cable
- One or two differential pairs
- Vertical and right-angle mating board connector
- Design flexibility as an End 2 option for Flyover[®] assemblies
- Friction retention latching
- Standard alignment pins

KEY SPECIFICATIONS

CABLE	INSULATOR MATERIAL	CONTACT MATERIAL	PLATING	OPERATING TEMP RANGE	CURRENT RATING	VOLTAGE RATING
34 AWG, 92 Ω Thinax [™] ultra performance twinax	LCP	Copper Alloy	Au or Sn over 50 μ" (1.27 μm) Ni	Testing Now!	Testing Now!	Testing Now!

(0.635 mm) .025" • MINI FORM FACTOR CABLE ASSEMBLY

ARM6	NO. OF PAIRS	CABLE LENGTH	END 1	END 2	WIRING OPTION	CABLE STYLE
------	--------------	--------------	-------	-------	---------------	-------------

-01, -02

-“XX.X”
= Length in Inches
03.0” (76.2 mm)
minimum

-LU
= Latch up

-LU
= Latch up

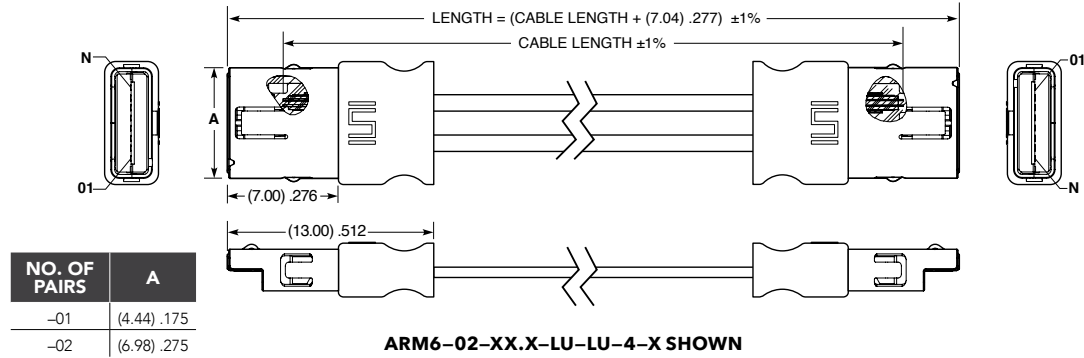
-LD
= Latch down

-1
= Pin 1 to Pin 1
(End 2 -LD only)

-4
= Pin 1 to Pin N
(End 2 -LU only)

-1
= 34 AWG
92 Ω
Eye Speed®
Thinax™

ARM6
Board Mates:
AMF6



Note:
Some sizes, styles and options are non-standard, non-returnable.

View complete specifications at: samtec.com?ARM6

AMF6	NO. OF PAIRS	PLATING	ROW OPTION	OPTION	“X”R
------	--------------	---------	------------	--------	------

-01, -02

-S
= 30 μ" (0.76 μm)
Gold on contact area,
Matte Tin on tail

(Leave blank for vertical)

-RA
= Right-angle

(Leave blank for Right-angle)

-K
= (5.00 mm) .197" DIA
Polyimide film
Pick & Place Pad

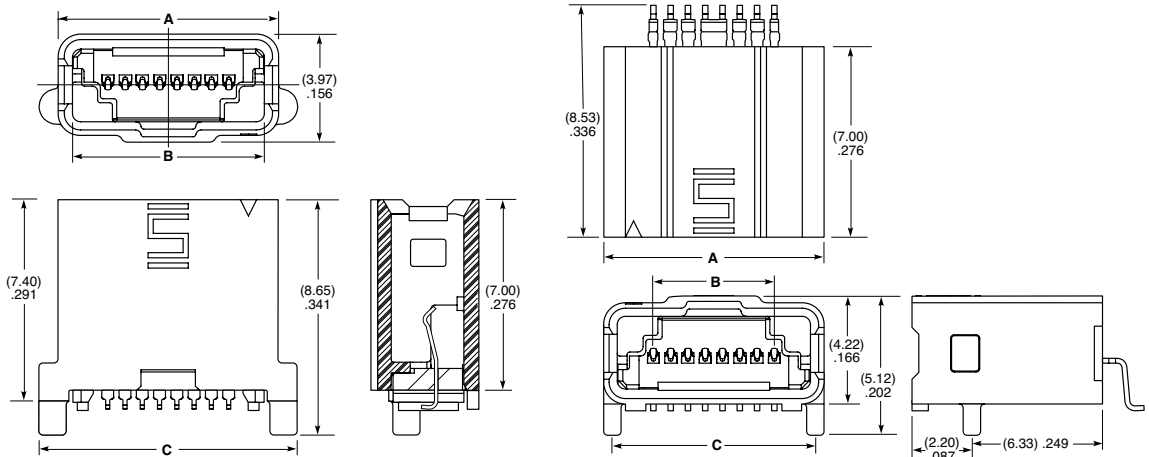
-TR
= Tape & Reel

-FR
= Full Reel Tape & Reel
(must order maximum
quantity per reel; contact
Samtec for quantity breaks)

AMF6
Cable Mates:
ARM6



NO. OF PAIRS	A	B	B (-RA)	C	C (-RA)
-01	(5.56) .219	(4.51) .176	(1.91) .075	(6.96) .274	(4.92) .194
-02	(8.10) .319	(7.05) .278	(4.75) .175	(9.50) .374	(7.46) .294



Note:
Some sizes, styles and options are non-standard, non-returnable.

View complete specifications at: samtec.com?AMF6