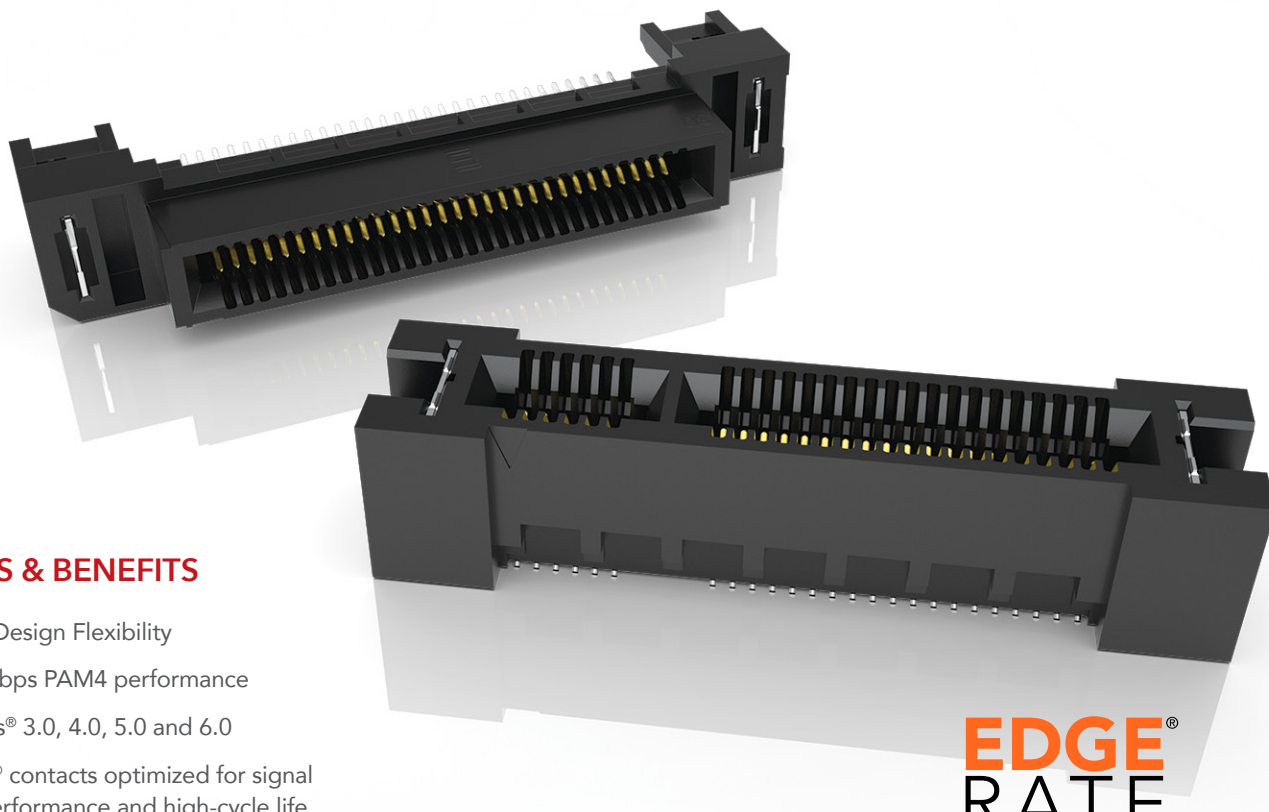


GENERATE®

HIGH-SPEED EDGE CARD SYSTEMS

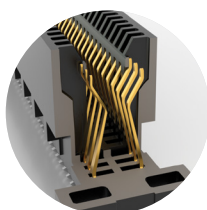
0.60 mm, 0.80 mm and 1.00 mm PITCH



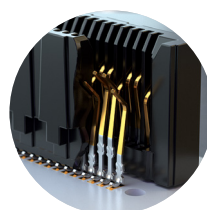
FEATURES & BENEFITS

- Maximum Design Flexibility
- Up to 64 Gbps PAM4 performance
- PCI Express® 3.0, 4.0, 5.0 and 6.0
- Edge Rate® contacts optimized for signal integrity performance and high-cycle life
- Up to 200 positions available
- Vertical, right-angle, edge mount, pass-through orientations
- Power/signal combo, press-fit tails, rugged weld tabs, locks and latches
- Mating cable assemblies available

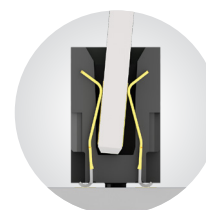
**EDGE
RATE**
CONTACT



Rugged tucked beam technology (HTEC8)



Differential pair for increased speed (HSEC8-DP)



Custom designs allow for misalignment in the X-Y axes (HSEC1)

KEY SPECIFICATIONS

SERIES	PITCH	TOTAL POSITIONS	INSULATOR MATERIAL	CONTACT MATERIAL	OPERATING TEMP RANGE	CURRENT RATING	VOLTAGE RATING	LEAD-FREE SOLDERABLE
HSEC6	0.60 mm	56-168	Black LCP	Copper Alloy	-55 °C to +125 °C	1.9 A (2 pins)	240 VAC	Yes
HTEC8	0.80 mm	20-200	Black LCP	Copper Alloy	-55 °C to +125 °C	3.0 A (2 pins)	215 VAC	Yes
HSEC8	0.80 mm	18-200	Black LCP	BeCu	-55 °C to +125 °C	2.8 A (2 pins)	240 VAC	Yes
HSEC1	1.00 mm	20-140	Black LCP	Phosphor Bronze	-55 °C to +125 °C	2.2 A (2 pins)	215 VAC	Yes

(0.80 mm) .0315" PITCH • RUGGED HIGH-SPEED EDGE CARD SOCKET

HTEC8 - **1** POSITIONS PER ROW - **01** - **PLATING OPTION** - **DV** - **OPTION** - **OTHER OPTION** - **"X"R**

**10, 20,
30, 40, 50,
60, 80, 100**

-L
= 10 μ"
(0.25 μm)
Gold on
contact area,
Matte Tin
on tail

-S
= 30 μ"
(0.76 μm)
Gold on
contact area,
Matte Tin
on tail

Leave blank for no
alignment pin

-A
= Alignment Pin

-WT
= Weld Tab
(-A option required)

-K
= (7.00 mm)
.276" DIA
Polyimide
Pick &
Place Pad

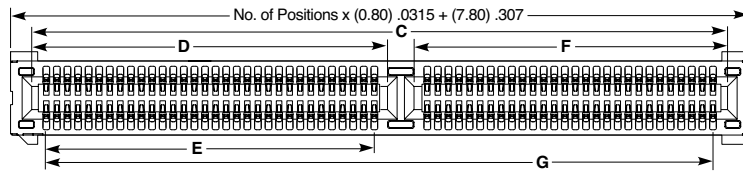
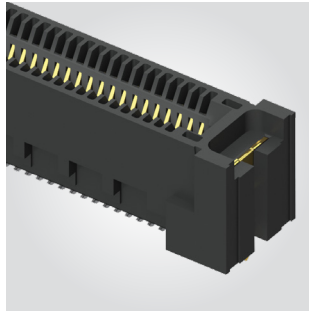
Leave blank for
Tray Packaging

-TR
= Tape & Reel
(10 thru 60
positions only)

-FR
= Full Reel
Tape & Reel
(must order max.
quantity per reel;
contact Samtec
for quantity breaks)
(10 thru 60
positions only)

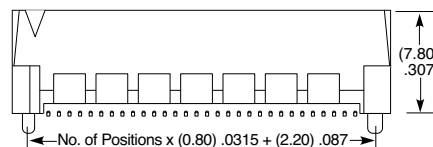
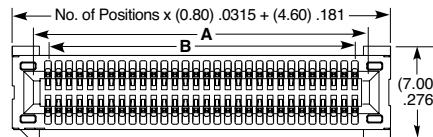
HTEC8

Card Mates:
(1.60 mm) .062"
thick card



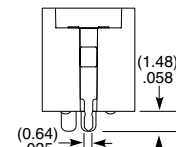
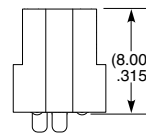
40, 50, 60, 80 & 100 POSITIONS

POSITIONS PER ROW	C	D	E	F	G
40	(36.60) 1.440	(18.90) .744	(16.80) .661	(15.70) .618	(34.40) 1.354
50	(44.60) 1.756	(22.90) .902	(20.80) .819	(19.70) .776	(42.40) 1.669
60	(52.60) 2.071	(26.90) 1.059	(24.80) .976	(23.70) .933	(50.40) 1.984
80	(68.60) 2.701	(26.90) 1.059	(24.80) .976	(39.70) 1.563	(66.40) 2.614
100	(84.60) 3.331	(26.90) 1.059	(24.80) .976	(55.70) 2.193	(82.40) 3.244



10, 20 & 30 POSITIONS

POSITIONS PER ROW	A	B
10	(9.40) .370	(7.20) .283
20	(17.40) .685	(15.20) 5.98
30	(25.40) 1.000	(23.20) .913



**-WT
OPTION**

Note:
Some sizes, styles and
options are non-standard,
non-returnable.

View complete specifications at: samtec.com?HTEC8