

ULTRA RUGGED I/O SYSTEMS

(1.00 mm) .0394" PITCH



MAX
2.9
A m p s

FEATURES & BENEFITS

- Small form factor
- Four points of contact for a reliable connection and high mating cycles
- Up to 40 positions per row
- Cable-to-cable & cable-to-board solutions
- EMI shielding limits signal degradation and optimizes performance
- Through-hole or surface mount
- 28 & 30 AWG cable



Shown actual size at 20 total positions



Hyperboloid-type contact for extreme high mating cycles



Extreme density with up to 1,450 total I/Os in a 1RU panel (29 cables at 50 total I/Os each)

KEY SPECIFICATIONS (P1PD(X), B1SD(X) & P1M)

PITCH	INSULATOR MATERIAL	CONTACT MATERIAL	SHIELD MATERIAL	PLATING	OPERATING TEMP RANGE	CURRENT RATING	VOLTAGE RATING
1.00 mm	Liquid Crystal Polymer	Beryllium Copper	Zinc Alloy	Au over 50 μm (1.27 μm) Ni	-10 °C to +80 °C (PVC) -40 °C to +125 °C (*Teflon™ Fluoropolymer)	2.9 A per pin (2 pins powered)	253 VAC

*Teflon™ is a trademark of The Chemours Company FC, LLC used under license by Samtec.

(1.00 mm) .0394" PITCH • PANEL MOUNT I/O CABLE/COMPONENTS

SERIES	NO. OF POSITIONS	WIRE GAUGE	COLOR CODE	PLATING	ASSEMBLED LENGTH	END OPTION	PINOUT
--------	------------------	------------	------------	---------	------------------	------------	--------

P1PD
= Double Row Panel Mount PVC Cable

P1PDT
= Double Row Panel Mount Blue *Teflon™ Fluoropolymer Cable

-10, -15, -25, -30
(Per Row)

-28
= 28 AWG
-30
= 30 AWG

(Leave blank for standard wire)
C
= Color Code Wire (Not available with P1PDT)

-H
= 30 μ" (0.76 μm)
Gold on contact area, Gold flash on tail

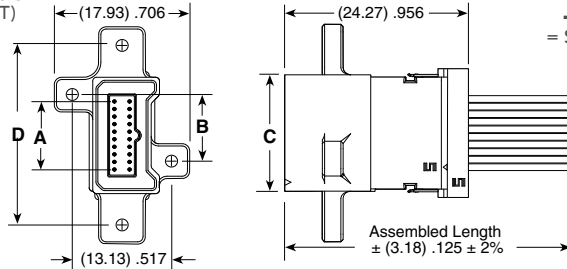
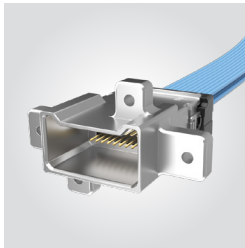
-"XX.X"
= Length in inches
06.0" (152.4 mm) minimum

(Leave blank for single ended)
-B
= B1SD
-S
= SFSD

(Leave blank for single ended)
1
= Pin 1 to Pin 1
2
= Pin 1 to Pin 2
3
= Pin 1 to Pin N
4
= Pin 1 to Pin N-1

P1PD PRELIMINARY

P1PD, P1PDT Cable Mates:
B1SD, B1SDT



P1PDX-10-XXX-H-XX.X SHOWN

NO. OF POSITIONS	A	B	C	D
-10	(9.00) .354	(8.79) .346	(15.39) .606	(23.75) .935
-15	(14.00) .551	(13.79) .543	(20.39) .803	(28.75) 1.132
-25	(24.00) .945	(23.79) .937	(30.39) 1.196	(38.75) 1.526
-30	(29.00) 1.142	(28.79) 1.133	(35.39) 1.393	(43.75) 1.722

*Teflon™ is a trademark of The Chemours Company FC, LLC used under license by Samtec.

Notes:
Teflon™ Fluoropolymer Cable is intended for crimp only. Contact Samtec for solderable cable applications.

Some lengths, styles and options are non-standard, non-returnable.

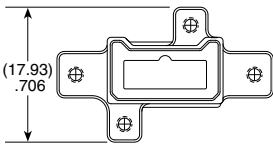
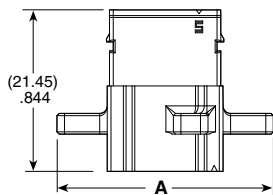
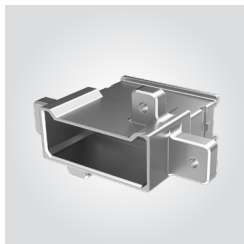
P1PD CABLE HOLDER (Required for use with IPP1)

SERIES	NUMBER OF POSITIONS
P1PDR	-10, -15, -25, -30

View complete specifications at: samtec.com?P1PD & samtec.com?P1PDT

P1PDS	NO. OF POSITIONS	N
-------	------------------	---

-10, -15, -25, -30



NO. OF POSITIONS	A
-10	(28.75) 1.132
-15	(33.75) 1.329
-25	(43.75) 1.722
-30	(48.75) 1.920

Note:
Some lengths, styles and options are non-standard, non-returnable.

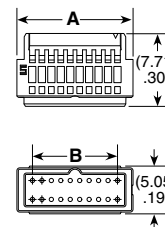
TOOLING

Hand Tool: TBD

Mini Applicator: TBD

IPP1	NO. OF POSITIONS	1
------	------------------	---

-10, -15, -25, -30

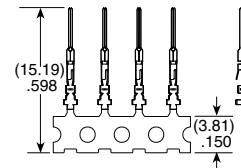


NO. OF POSITIONS	A	B
-10	(12.290) .484	(9.00) .354
-15	(17.290) .681	(14.00) .551
-25	(27.290) 1.074	(24.00) .945
-30	(32.290) 1.271	(29.00) 1.142

TC145	01	PLATING	PACKAGING
-------	----	---------	-----------



-H
= 30 μ" (0.76 μm)
Gold on contact area, Gold flash on tail



-R
= Full Reel (25,000 Terminals Per Reel)

-M
= Mini Reel (1,000 to 5,000 Terminals Per Reel)

-B
= Bubble Bag (35 Terminals)

View complete specifications at: samtec.com?P1PDS, samtec.com?IPP1 & samtec.com?TC145