

(0,80 mm) .0315"

RCH SERIES

RUGGED SEALED HIGH SPEED SYSTEM

SPECIFICATIONS

For complete specifications see www.samtec.com?RCH

Cable:
32 AWG Low Skew Pair/
28 AWG Power

Bend Radius:
(25,40 mm) 1.00"

Signal Routing:
100Ω Differential

Pinout Map:
1:1 Map Standard
(See web address above
for additional information)

RoHS Compliant:
Yes

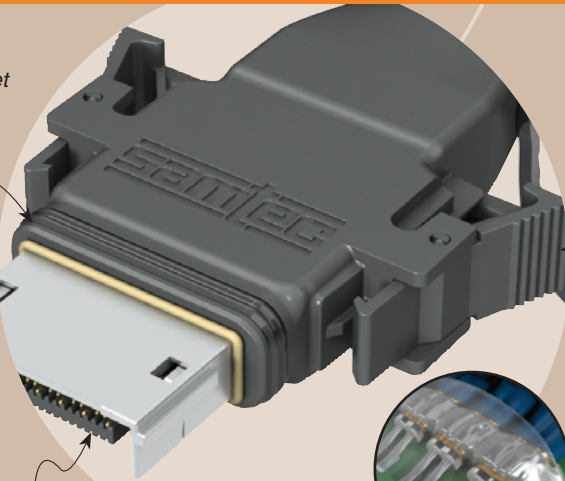
Mates with:
ERI8, RPBH



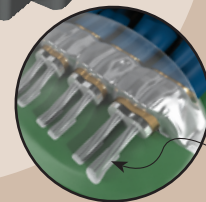
- Edge Rate™ contacts
- Flexible cable
- Positive latching

Rubber gasket for dust and water sealing

Positive latching



High cycles



32 AWG Low Skew Pair

Protocols Supported

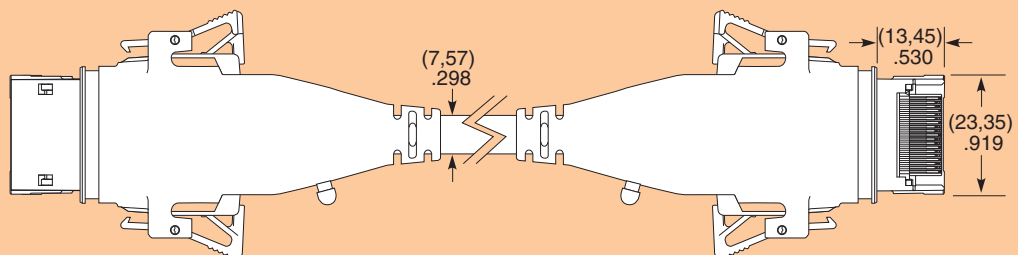
- SAS
- SATA
- Fibre Channel
- Ethernet
- PCIe®
- InfiniBand™

Contact SIG@samtec.com for questions on protocols

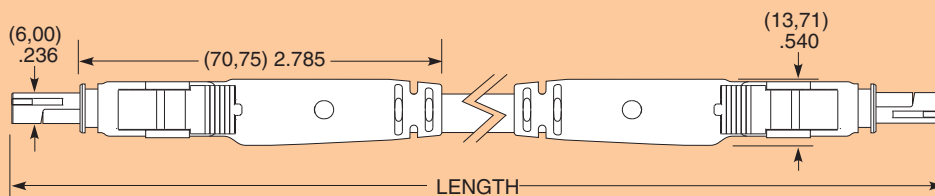
TYPE	NO. OF POSITIONS	LENGTH
RCH = Rugged Sealed Eye Speed® I/O Cable Assembly	-019 = 8 Pairs, 5 Power, 2 Clock, 19 positions	-“XXXX” = Length in millimeters -1000, -2000, -3000 (Standard lengths)

DUST CAP

DCA-RCH-019 Series



Reversed to show bottom view



Note:
This Series is non-standard, non-returnable.

Due to technical progress, all designs, specifications and components are subject to change without notice.

WWW.SAMTEC.COM