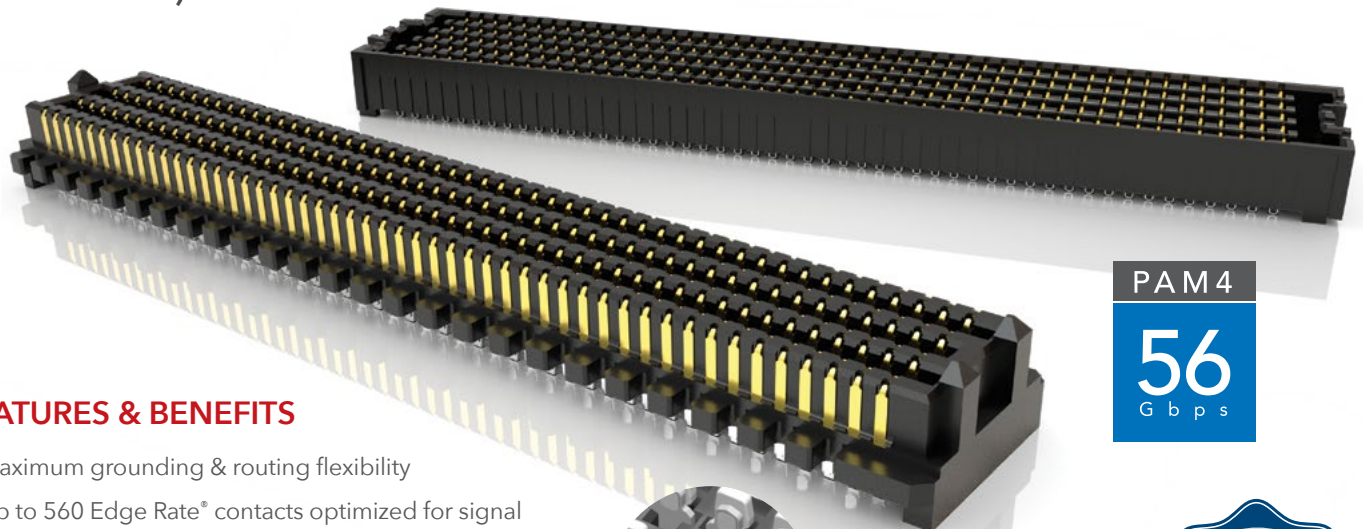




HIGH-DENSITY OPEN-PIN-FIELD ARRAYS

(1.27 mm) .050" PITCH

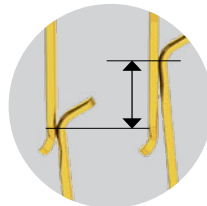


FEATURES & BENEFITS

- Maximum grounding & routing flexibility
- Up to 560 Edge Rate® contacts optimized for signal integrity performance.
- 7 mm to 40 mm stack heights
- Variety of designs and options: Right-Angle, Guide Posts, 85 Ω Elevated Risers, 85 Ω Tuned, Press-Fit and Press-Fit Right-Angle, Guide Post Field Termination Kits
- Cable mates (SEAC Series) and Jack Screw Standoffs (JSO Series) also available
- Standards: VITA 47, VITA 57.1 FMC, VITA 57.4 FMC+, VITA 74 VNX, PISMO™ 2
- Supports high-speed protocols such as Ethernet, PCI Express®, Fibre Channel & InfiniBand™
- Severe Environment Testing qualified (SEAM/SEAF); aligns with MIL-DTL-55302. Visit samtec.com/set



Solder Charges



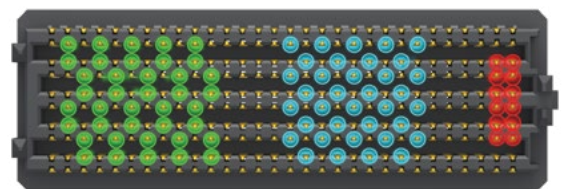
(1.12 mm) .044" Nominal Wipe

EDGE RATE
CONTACT

PAM 4
56
G b p s



MAXIMUM GROUNDING & ROUTING FLEXIBILITY



Differential Pair Single-Ended Power

| SERIES | INSULATOR MATERIAL | CONTACT MATERIAL | PLATING | OPERATING TEMP RANGE | CURRENT RATING | VOLTAGE RATING | LEAD-FREE SOLDERABLE |
|-----------------|-------------------------|--|----------------------------------|----------------------|-------------------------|----------------|----------------------|
| SEAM/SEAF | Black LCP | Copper Alloy | Au or Sn over 50 μ" (1.27 μm) Ni | -55 °C to +125 °C | 2.7 A (10 pins powered) | 240 VAC | Yes |
| SEAM-RA/SEAF-RA | Black LCP | Copper Alloy | Au or Sn over 50 μ" (1.27 μm) Ni | -55 °C to +125 °C | 1.9 A (10 pins powered) | 260 VAC | Yes |
| SEAM-GP | Black LCP | Copper Alloy | Au or Sn over 50 μ" (1.27 μm) Ni | -55 °C to +125 °C | 2.7 A (10 pins powered) | 240 VAC | Yes |
| SEAMP/SEAFP | Natural High Temp Nylon | Copper Alloy (SEAMP) BeCu Alloy (SEAFP) | Au or Sn over 50 μ" (1.27 μm) Ni | -55 °C to +125 °C | 1.9 A (6 pins powered) | 225 VAC | Not Available |
| SEAR | Black LCP | Hard Gold Plated | Au over 50 μ" (1.27 μm) Ni | -55 °C to +125 °C | Contact Samtec | 240 VAC | Not Available |
| SEAMI | Black LCP | Copper Alloy | Au or Sn over 50 μ" (1.27 μm) Ni | -55 °C to +125 °C | Not Available | Not Available | Yes |

Note: Some lengths, styles and options are non-standard, non-returnable

(1.27 mm) .050" PITCH • PRESS-FIT & 85 Ω OPEN-PIN-FIELD ARRAYS

| SERIES | POSITIONS PER ROW | LEAD STYLE | PLATING OPTION | NO. OF ROWS | OPTION | PACKAGING |
|-------------------|----------------------------|-----------------------|---|-------------------------------|-----------------------------------|---|
| SEAMP Terminal | -10, -20, -30, -40, -50 | -02.0 (SEAMP only) | -L = 10 μ" (0.25 μm) Gold on contact area, Matte Tin on tail | -04, -06, -08, -10 | -GP Guide Post (SEAMP only) | -TR = Tape & Reel |
| SEAFP Socket | | -05.0 (SEAFP only) | -S = 30 μ" (0.76 μm) Gold on contact area, Matte Tin on tail | SEAFP: -04 & -06 Rows only | | -FR = Full Reel Tape & Reel (must order max. quantity per reel; contact Samtec for quantity breaks) |

SEAMP
Board Mates:
SEAF,
SEAF-RA-GP,
SEAFP

| NO. OF ROWS | A |
|-------------|--------------|
| -04 | (7.06) .278 |
| -06 | (9.60) .378 |
| -08 | (12.14) .478 |
| -10 | (14.68) .578 |

SEAFP
Board Mates:
SEAM,
SEAM-RA,
SEAMP

| NO. OF ROWS | A |
|-------------|-------------|
| -04 | (5.61) .221 |
| -06 | (8.15) .321 |

View complete specifications at: samtec.com?SEAMP & samtec.com?SEAFP. Visit samtec.com?SEAFP-RA for right-angle socket.

| SERIES | POSITIONS PER ROW | LEAD STYLE | NO. OF ROWS | 085 |
|-----------------------------|-------------------|--|---------------|-----|
| SEAR 85 Ω Tuned Riser | -40, -50 | -10.0 = 20 mm Mated Height -20.0 = 30 mm Mated Height -30.0 = 40 mm Mated Height | -06, -08, -10 | |

SEAR
Board Mates:
SEAFC

| POSITIONS PER ROW | A |
|-------------------|---------------|
| -40 | (71.42) 2.812 |
| -50 | (84.12) 3.312 |

| NO. OF ROWS | B |
|-------------|--------------|
| -06 | (11.43) .450 |
| -08 | (13.97) .550 |
| -10 | (16.51) .650 |

| SERIES | POSITIONS PER ROW | 11.0 | PLATING OPTION | NO. OF ROWS | SOLDER TYPE | A | K | "X"R |
|---------------------------------|-------------------|------|---|-------------|--|---|---|---|
| SEAMI 85 Ω Tuned Terminal | -40 -50 | | -L = 10 μ" (0.25 μm) Gold on contact area, Matte Tin on solder tail | -08 -10 | -1 = Tin/Lead Alloy SolderCharge | | | -TR = Tape & Reel |
| SEAMI | | | -S = 30 μ" (0.76 μm) Gold on contact area, Matte Tin on solder tail | | -2 = Lead-Free Solder Charge | | | -FR = Full Reel Tape & Reel (must order max. quantity per reel; contact Samtec for quantity breaks) |

SEAMI
Board Mates:
SEAF

Note: Some lengths, styles and options are non-standard, non-returnable

| NO. OF ROWS | A |
|-------------|--------------|
| -08 | (13.41) .528 |
| -10 | (15.95) .628 |

View complete specifications at: samtec.com?SEAR & samtec.com?SEAMI.