

SMP TO 40 GHz

SMP Board Connectors

SMP-TH, SMP-EM,
SMP-MT, SMP-SM

Cable Mates:

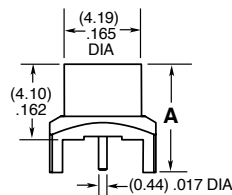
RF047-A, RF086,
RF23C, RF405, RF25S



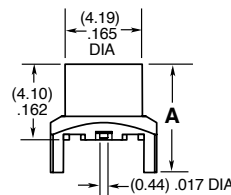
SMP	GENDER	TYPE	PLATING	ORIENTATION	TERMINATION
-----	--------	------	---------	-------------	-------------

- PF**
= Plug, Full Detent
- PL**
= Plug, Limited Detent
- PS**
= Plug, Smooth Bore
- PC**
= Plug, Catcher's Mitt
- P**
= PCB Mount
- HG**
= 30 μ" (0.76 μm) Gold center contact,
10 μ" (0.25 μm) Gold outer body
- ST**
= Straight
- SM**
= Surface Mount (Not available with PS)
- TH"X"**
= Through-hole (Specify "X" from chart)
- MT"X"**
= Mixed Technology (Specify "X" from chart)
- EM**
= Edge Mount (-PL & -PS only)

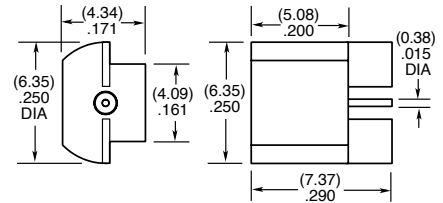
OPTION (X)	A (HEIGHT DIM.)	BOARD THICKNESS
1	(5.88) .2315	(1.60 mm) .062" PCB
2	(6.54) .2575	(2.36 mm) .093" PCB



-PF/-PL/-PS-TH2



-MT(X)



-EM

ALSO AVAILABLE

Low Frequency options.
Contact RFGroup@samtec.com

SMP Bullet Adaptor

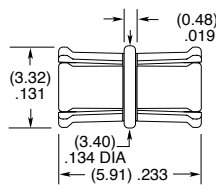
SMP-B



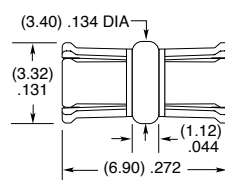
SMP	J	TYPE	PLATING	ORIENTATION	BULLET LENGTH
-----	---	------	---------	-------------	---------------

- B**
= Bullet Adaptor
- HG**
= 30 μ" (0.76 μm) Gold center contact,
10 μ" (0.25 μm) Gold outer body
- ST**
= Straight
- 0591***
= (5.91 mm) .233"
- 0645**
= (6.45 mm) .254"
- 0690***
= (6.90 mm) .272"
- 0795***
= (7.95 mm) .313"
- 0896***
= (8.96 mm) .353"
- 1305***
= (13.05 mm) .514"
- 1450**
= (14.50 mm) .571"

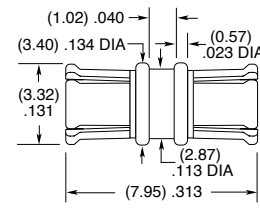
**PRELIMINARY*



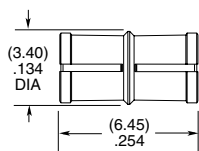
-0591



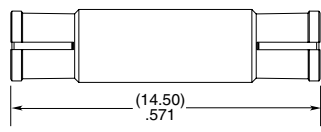
-0690



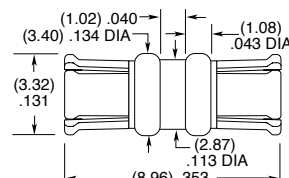
-0795



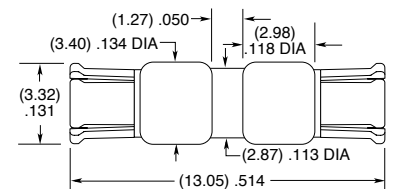
-0645



-1450



-0896



-1305