

## SMMP TO 65 GHz

### SMMP Cable Assemblies

RF047-A, RF086, RF23C



#### VSWR

**RF047-A:** 1.40 max.  
**RF086:** 1.40 max.  
**RF23C:** 1.20 max. (DC to 26.5 GHz)  
 1.40 max. (26.5 GHz to 50 GHz)

SERIES	END 1 CONNECTOR	END 2 CONNECTOR	OVERALL LENGTH
<b>RF047-A</b> = (1.2 mm) .047" overshield DIA 29 AWG millimeter cable  <b>RF086</b> = (2.18 mm) .086" overshield DIA 23 AWG millimeter cable  <b>RF23C</b> = MWC-2350CU-01 millimeter wave cable with copper foil shield	<b>-MOSP</b> = SMMP Straight Plug, Full Detent  <b>-MOSJ</b> = SMMP Straight Jack  <b>-MORJ</b> = SMMP Right-angle Jack (RF047-A only)  <b>-MOBJ</b> = SMMP Straight Bulkhead Jack (RF047-A only)	<b>-"XXXX"</b> = Overall Length in millimeters  -0100 (100 mm) 3.94" minimum (RF047-A, RF086)  -0152 (152 mm) 5.984" minimum (RF23C)	

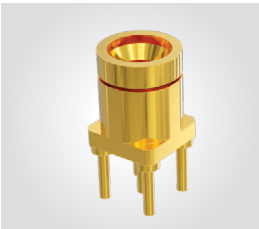
#### ALSO AVAILABLE

1.00 mm, 1.35 mm, 1.85 mm, 2.40 mm,  
 2.92 mm, SMP, SMA = RF047-A  
 1.85 mm, 2.40 mm, 2.92 mm, SMP, SMA = RF086  
 2.40 mm, 2.92 mm, SMP, SMA = RF23C

### SMMP Board Connectors

SMMP-SM, SMMP-TH, SMMP-RA, SMMP-MT, SMMP-EM

**Cable Mates:**  
 RF047-A, RF086, RF23C



SMMP	GENDER	TYPE	PLATING	ORIENTATION	TERMINATION	OPTION
	<b>-PF</b> = Full Detent  <b>-PS</b> = Smooth Bore  <b>-PC</b> = Catcher's Mitt (-ST-TH, -ST-MT & -ST-SM only)	<b>-P</b> = PCB Mount	<b>-HG</b> = 30 μ" (0.76 μm) Gold center contact, 10 μ" (0.25 μm) Gold outer contact (-ST only)  <b>-HF</b> = 30 μ" (0.76 μm) Gold center contact, 3 μ" (0.08 μm) Gold outer contact (-RA only)  <b>-EG</b> = 50 μ" (1.27 μm) Gold center contact and outer body (-MT & -SM only)  <b>-EE</b> = 50 μ" (1.27 μm) extra heavy Gold center contact and outer body (SM-2 only)	<b>-ST</b> = Straight  <b>-RA</b> = Right-angle (-TH required)	<b>-EM</b> = Drop-in Edge Mount (-ST only)  <b>-TH</b> = Through-hole  <b>-SM</b> = Surface Mount (-ST only)  <b>-MT</b> = Mixed Technology (-ST only)	<b>-1</b> = Standard  <b>-2</b> = Reverse Mount (-EE and -SM only; see website for print)
 -ST-TH-1	 -RA-TH-1	 -ST-SM-1	 -ST-EM-1			

### SMMP Cable Connectors

PRFM0

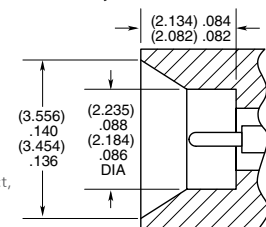


#### CONNECTORS FOR INDUSTRY STANDARD CABLES

PRFM0-J-C-EE-085-BD	Harbour SS405
PRFM0-J-C-EE-047A-BD	Temp-Flex 1000671047
PRFM0-J-C-HG-047A-SD	Temp-Flex 1000671047
PRFM0-J-C-EE-047A-RD	Temp-Flex 1000671047
PRFM0-P-C-HG-047A-SD	Temp-Flex 1000671047
PRFM0-J-C-EE-047B-SD	Temp-Flex 1001935047
PRFM0-J-C-EE-086-SD	Temp-Flex 1001935086
PRFM0-P-C-EE-086-SD	Temp-Flex 1001935086

For a complete list of SMMP cable connectors, visit [www.samtec.com?PRFM0](http://www.samtec.com?PRFM0)

#### INTERFACE STANDARD (CATCHER'S MITT)



P-C = Cable Plug  
 J-C = Cable Jack  
 EE = Plating  
 (50 μ" Gold center contact,  
 & outer contact)  
 HG = Plating  
 (30 μ" Gold center contact,  
 10 μ" Gold outer contact)  
 SD = Straight, Direct Solder  
 BD = Bulkhead, Direct Solder  
 RD = Right-angle, Direct Solder