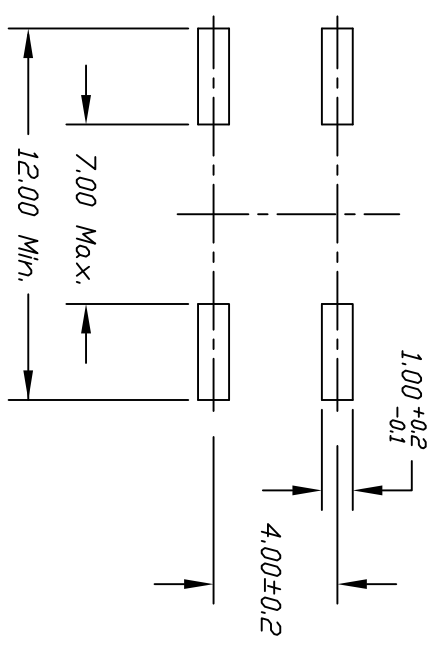
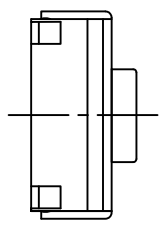
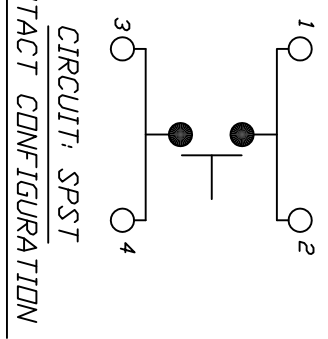


NOTES:

1. ALL DIMENSIONS IN MM
2. TERM. NOS. FOR REF ONLY
3. RATING: 50mA @12VDC
4. TRAVEL: 0.25mm +0.2/-1mm
5. CONTACT RESISTANCE: 100 mOhms Max.
6. MECHANICAL/ELECTRICAL LIFE: 100,000 CYCLES.
7. CONTACT MATERIAL: SILVER
8. PACKAGE: TAPE AND REEL, 1,500 PIECES.
9. 2002/95/EC (ROHS) COMPLIANT.
10. OPERATING FORCE: 260 ± 50gf.
11. OPERATING TEMPERATURE -20°C TO 70°C



RECOMMEND P.C.B. LAND DIMENSIONS



D	7.0 MAX WAS 5.8 MAX, PCR 21086	3/27/13	EBP
C	UPDATED NOTES	11/15/06	TN
B	CHANGED FORCE TO 260	6/13/05	JB
A	RELEASED FOR PRODUCTION		
REV.	DESCRIPTION	DATE	CHKD

TOLERANCES	
0.0	±0.4
0.00	±0.25

TITLE		SCALE	DATE	DR	DWG	REV
E-SWITCH®		4:1	11/15/2006	TN	P010539	D
TL3304AF2600G						

THE INFORMATION CONTAINED IN THIS DOCUMENT IS PROPRIETARY TO E-SWITCH AND IS NOT TO BE COPIED OR TRANSFERRED