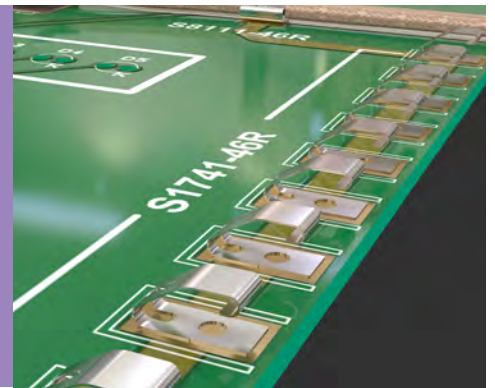


Spring Contacts

Grounding/RFI Contacts

- ❖ SMT devices for use in shielding and grounding applications.
- ❖ For use on surface mount PCBs, in contact with metal shields or frames.
- ❖ Suitable for both wiping and sliding actions.
- ❖ Ideal for automated requirements, using standard placement equipment.



EMC SHIELDING

| 1.7mm HIGH | 2.5mm HIGH | | | | | | | | | | |
|--|------------|--------|-----------|------------|---|------------|--------|-----------|------------|-----------|-----|
| <p>Recommended PC Board Pattern</p> <table border="1"> <thead> <tr> <th>ORDER CODE</th> <th>FINISH</th> </tr> </thead> <tbody> <tr> <td>S7121-42R</td> <td>Gold</td> </tr> </tbody> </table> | ORDER CODE | FINISH | S7121-42R | Gold | <p>Recommended PC Board Pattern</p> <table border="1"> <thead> <tr> <th>ORDER CODE</th> <th>FINISH</th> </tr> </thead> <tbody> <tr> <td>S1741-46R</td> <td>Tin</td> </tr> </tbody> </table> | ORDER CODE | FINISH | S1741-46R | Tin | | |
| ORDER CODE | FINISH | | | | | | | | | | |
| S7121-42R | Gold | | | | | | | | | | |
| ORDER CODE | FINISH | | | | | | | | | | |
| S1741-46R | Tin | | | | | | | | | | |
| 2.7mm HIGH | 3.5mm HIGH | | | | | | | | | | |
| <p>Recommended PC Board Pattern</p> <table border="1"> <thead> <tr> <th>ORDER CODE</th> <th>FINISH</th> </tr> </thead> <tbody> <tr> <td>S7091-42R</td> <td>Gold + Tin</td> </tr> </tbody> </table> | ORDER CODE | FINISH | S7091-42R | Gold + Tin | <p>Recommended PC Board Pattern</p> <table border="1"> <thead> <tr> <th>ORDER CODE</th> <th>FINISH</th> </tr> </thead> <tbody> <tr> <td>S1761-42R</td> <td>Gold + Tin</td> </tr> <tr> <td>S1761-46R</td> <td>Tin</td> </tr> </tbody> </table> | ORDER CODE | FINISH | S1761-42R | Gold + Tin | S1761-46R | Tin |
| ORDER CODE | FINISH | | | | | | | | | | |
| S7091-42R | Gold + Tin | | | | | | | | | | |
| ORDER CODE | FINISH | | | | | | | | | | |
| S1761-42R | Gold + Tin | | | | | | | | | | |
| S1761-46R | Tin | | | | | | | | | | |
| 4.0mm HIGH | 5.5mm HIGH | | | | | | | | | | |
| <p>Recommended PC Board Pattern</p> <table border="1"> <thead> <tr> <th>ORDER CODE</th> <th>FINISH</th> </tr> </thead> <tbody> <tr> <td>S1791-42R</td> <td>Gold</td> </tr> </tbody> </table> | ORDER CODE | FINISH | S1791-42R | Gold | <p>Recommended PC Board Pattern</p> <table border="1"> <thead> <tr> <th>ORDER CODE</th> <th>FINISH</th> </tr> </thead> <tbody> <tr> <td>S7061-42R</td> <td>Gold + Tin</td> </tr> <tr> <td>S7061-46R</td> <td>Tin</td> </tr> </tbody> </table> | ORDER CODE | FINISH | S7061-42R | Gold + Tin | S7061-46R | Tin |
| ORDER CODE | FINISH | | | | | | | | | | |
| S1791-42R | Gold | | | | | | | | | | |
| ORDER CODE | FINISH | | | | | | | | | | |
| S7061-42R | Gold + Tin | | | | | | | | | | |
| S7061-46R | Tin | | | | | | | | | | |

All dimensions in mm.