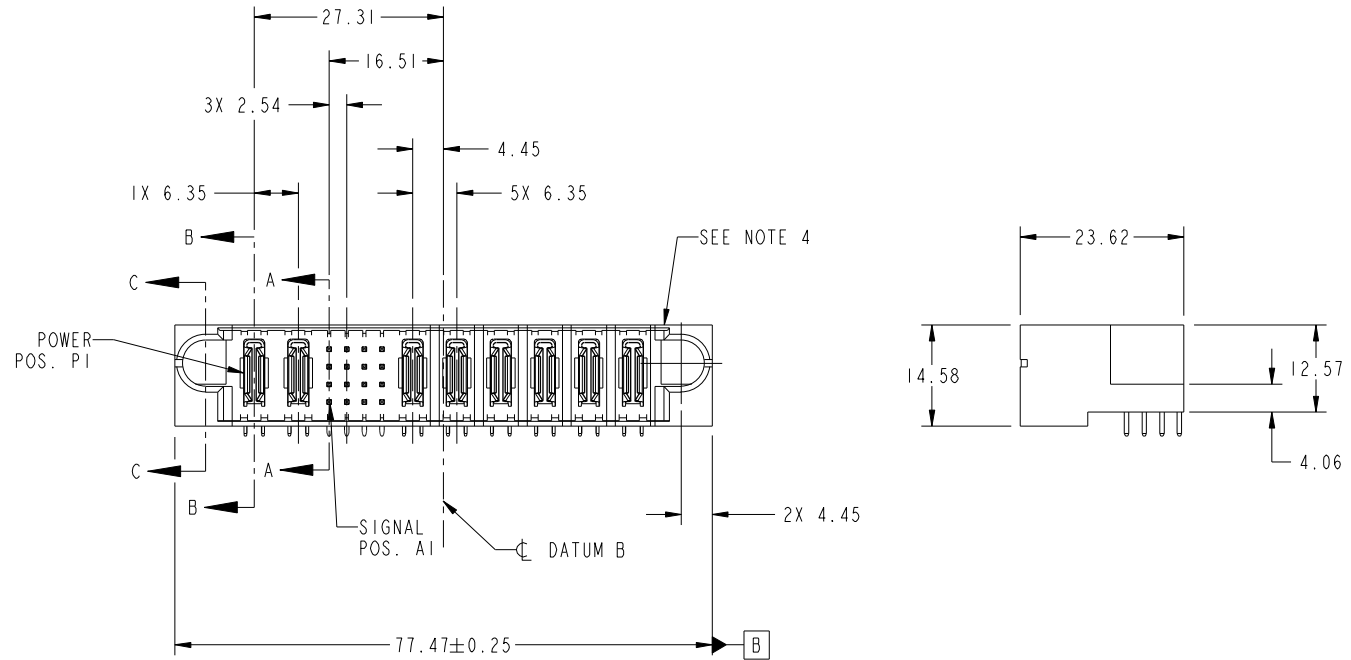


Tous droits strictement reserves. Reproduction ou communication a des tiers interdite sous quelque forme que ce soit sans autorisation écrite du propriétaire. Propriete de c FCI. Droits de reproduction FCI.



All rights strictly reserved. Reproduction or issue to third parties in any form whatever is not permitted without written authority from the proprietor. Property of FCI. Copyright FCI.

PRODUCT NO.	ROWS	POWER				SIGNAL				POWER				E2
		E1	P1	P2	1	2	3	4	P3	P4	P5	P6	P7	
51730-138-- NOTE 3	D C B A													



CODE	DIM "M" MATING LENGTH	CONTACT TYPE
SL	[7.82]	SIGNAL
U	[6.86]	SIGNAL
T	[6.86]	SIGNAL
S	[6.86]	SIGNAL
R	[6.86]	SIGNAL
PA	[N/A]	POWER

mat'l code				SEE NOTE 2		tolerances unless otherwise specified		CUSTOMER		FCI	
ltr	ecn no.	dr	date	linear	0.X ±0.3	projection		COPY		www.fciconnect.com	
A	DG07-0443	SH	11/05/07	angles	0.XX ±0.13	MIM		title		2P + 16S + 6P	
					0.XXX ±0.051	scale		product family		PwrBlade	
				dr	0° ±2°	1:1		size		code	
				enr	Sincere He 11/02/07			dwg no		213	
				chr	Sincere He 11/02/07			51730-138		sheet	
				appd	Gary Hsieh 11/02/07			A		1 of 4	
					Joseph Hsia 11/02/07						
sheet index	revision sheet	A	A	A	A						
		1	2	3	4						

cage code 22526

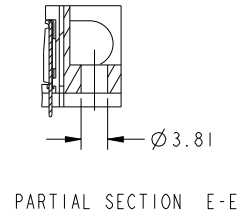
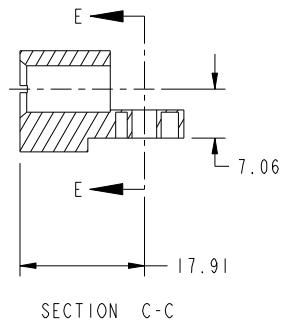
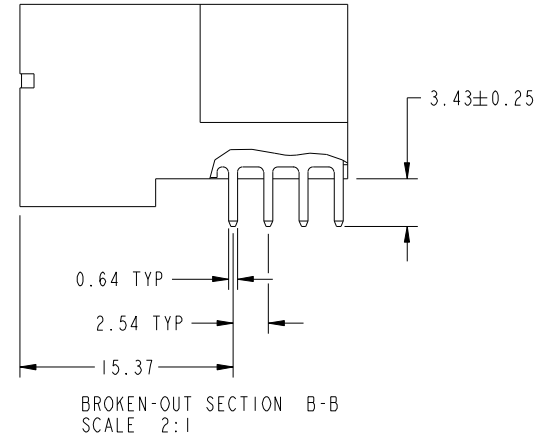
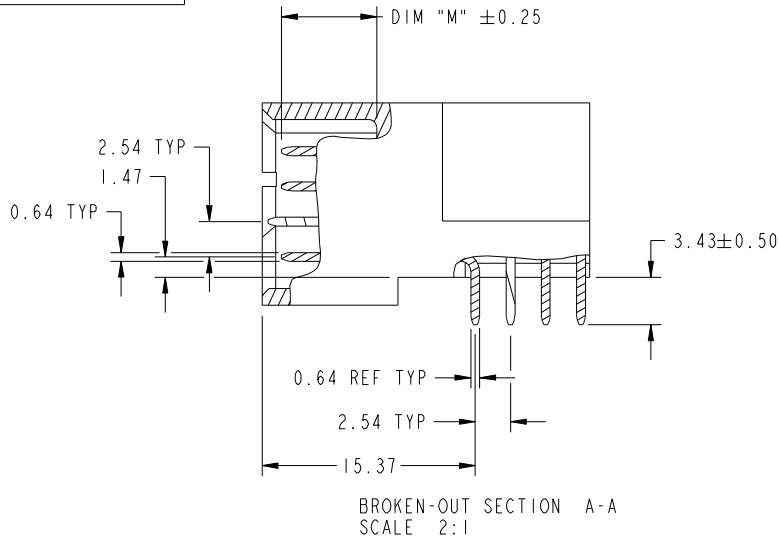
Pro/E

Tous droits strictement reserves. Reproduction ou communication a des tiers interdite sous quelque forme que ce soit sans autorisation écrite du propriétaire. Propriete de c FCI. Droits de reproduction FCI.

All rights strictly reserved. Reproduction or issue to third parties in any form whatever is not permitted without written authority from the proprietor. Property of FCI. Copyright FCI.



PRODUCT NUMBER
51730-138..
NOTE: 3



mat'l code				SEE NOTE 2		tolerances unless otherwise specified		CUSTOMER		FCI	
ltr	ecm no.	dr	date	linear	0.X ±0.3		COPY		www.fciconnect.com		
A					0.XX ±0.13		projection		title		
					0.XXX ±0.051				2P + 16S + 6P RIGHT ANGLE SOLDER HEADER		
				angles	0° ±2°				product family		code
				dr	Sincere He	11/02/07	scale		PwrBlade		213
				enr	Sincere He	11/02/07	1:1		size		sheet
				chr	Gary Hsieh	11/02/07	A		dwg no		2 of 4
				appd	Joseph Hsia	11/02/07			51730-138		
sheet index		revision sheet									

cage code 22526

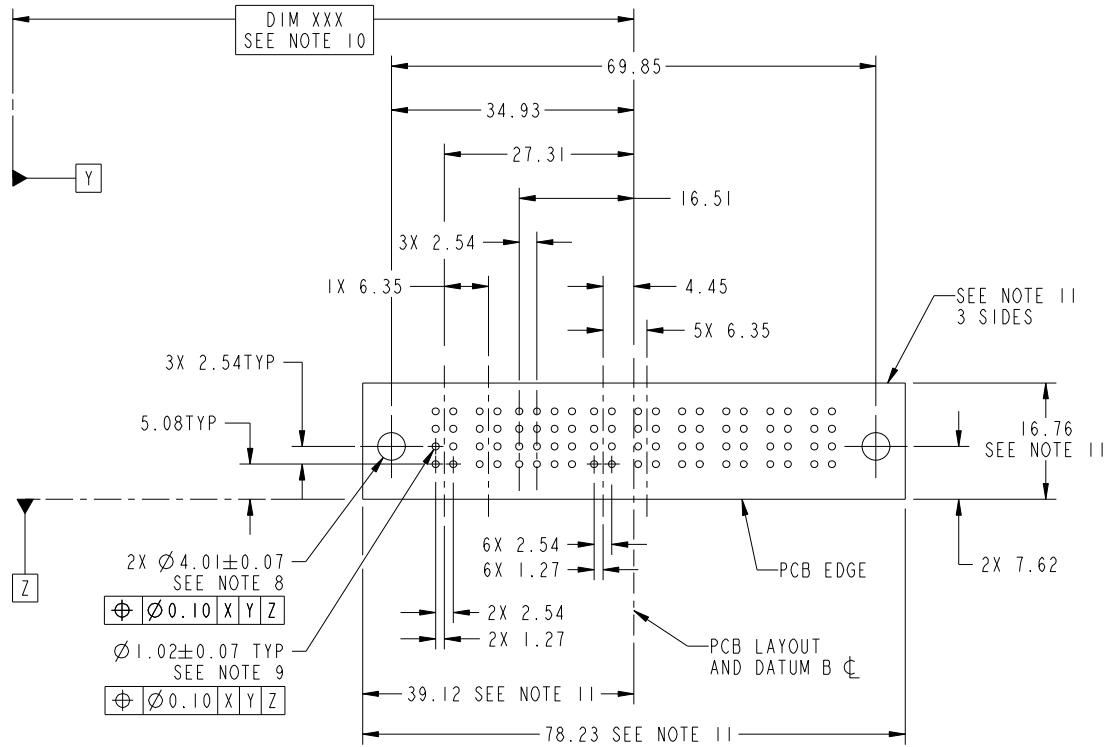
Pro/E

Tous droits strictement reserves. Reproduction ou communication a des tiers interdite sous quelque forme que ce soit sans autorisation écrite du propriétaire. Propriete de c FCI. Droits de reproduction FCI.



All rights strictly reserved. Reproduction or issue to third parties in any form whatever is not permitted without written authority from the proprietor. Property of FCI. Copyright FCI.

PRODUCT NUMBER
51730-138__
NOTE: 3



RECOMMENDED PCB LAYOUT

mat'l code				SEE NOTE 2		tolerances unless otherwise specified		CUSTOMER		FCI	
ltr	ecn no.	dr	date	linear	0.X ± 0.3	COPY		www.fciconnect.com		title	
A					0.XX ± 0.13	projection		2P + 16S + 6P		RIGHT ANGLE SOLDER HEADER	
				angles	0.XXX ± 0.051	MIM		product family		PwrBlade	
				dr	Sincere He 11/02/07	scale		size		code	
				enr	Sincere He 11/02/07	1:1		dwg no		213	
				chr	Gary Hsieh 11/02/07			51730-138		sheet	
				appd	Joseph Hsia 11/02/07			A		3 of 4	
sheet index		revision sheet									

cage code 22526

Pro/E

Tous droits strictement reserves. Reproduction ou communication a des tiers interdite sous quelque forme que ce soit sans autorisation écrite du propriétaire. Propriete de c FCI. Droits de reproduction FCI.



All rights strictly reserved. Reproduction or issue to third parties in any form whatever is not permitted without written authority from the proprietor. Property of FCI. Copyright FCI.

PRODUCT NUMBER
51730-138_-
NOTE: 3

NOTES:

1. DIMENSIONS AND TOLERANCES ARE IN ACCORDANCE WITH ASME Y14.5M, 1994 UNLESS OTHERWISE SPECIFIED.

CONNECTOR NOTES:

- 2. HOUSING MATERIAL: UL 94 V-0 GLASS FILLED
HIGH-TEMP THERMOPLASTIC
POWER CONTACT MATERIAL: COPPER ALLOY
SIGNAL PIN MATERIAL: COPPER ALLOY
- 3. 51730-138; 51730-138LF PLATING SPEC. SEE PRINT:10064183
- 4. MANUFACTURER'S NAME, P/N, AND DATE CODE TO APPEAR ON THIS SURFACE.
- 5. PRODUCT SPECIFICATION GS-12-149.
APPLICATION SPECIFICATION BUS-20-067.
- 6. PACKAGED IN TRAYS.

PCB NOTES:

- 7. ALL HOLE DIAMETERS ARE FINISHED HOLE SIZE.
- 8. MOUNTING HOLES, WHERE APPLICABLE, ARE UNPLATED.
- 9. $\varnothing 1.151 \pm 0.025$ DRILLED HOLES PLATED WITH
0.008 MIN SnPb OR Sn OVER 0.03
TO 0.08 Cu PLATING TO ACHIEVE
 $\varnothing 1.02 \pm .07$ HOLE.
- 10. "DIM XXX" TO BE DETERMINED BY THE CUSTOMER.
- 11. CONNECTOR KEEP-OUT ZONE.

mat'l code		SEE NOTE 2		tolerances unless otherwise specified		CUSTOMER		FCI		www.fciconnect.com	
ltr	ecn no.	dr	date	linear	0.X ± 0.3	COPY		projection	title		
A					0.XX ± 0.13	MIM			2P + 16S + 6P		
				angles	0.XXX ± 0.051	←			RIGHT ANGLE SOLDER HEADER		
				dr	Sincere He 11/02/07	scale		product family	PwrBlade	code	213
				enr	Sincere He 11/02/07	1:1		size	dwg no	sheet	4 of 4
				chr	Gary Hsieh 11/02/07	A		51730-138			
				appd	Joseph Hsia 11/02/07						
sheet index	revision sheet										

cage code 22526

Pro/E