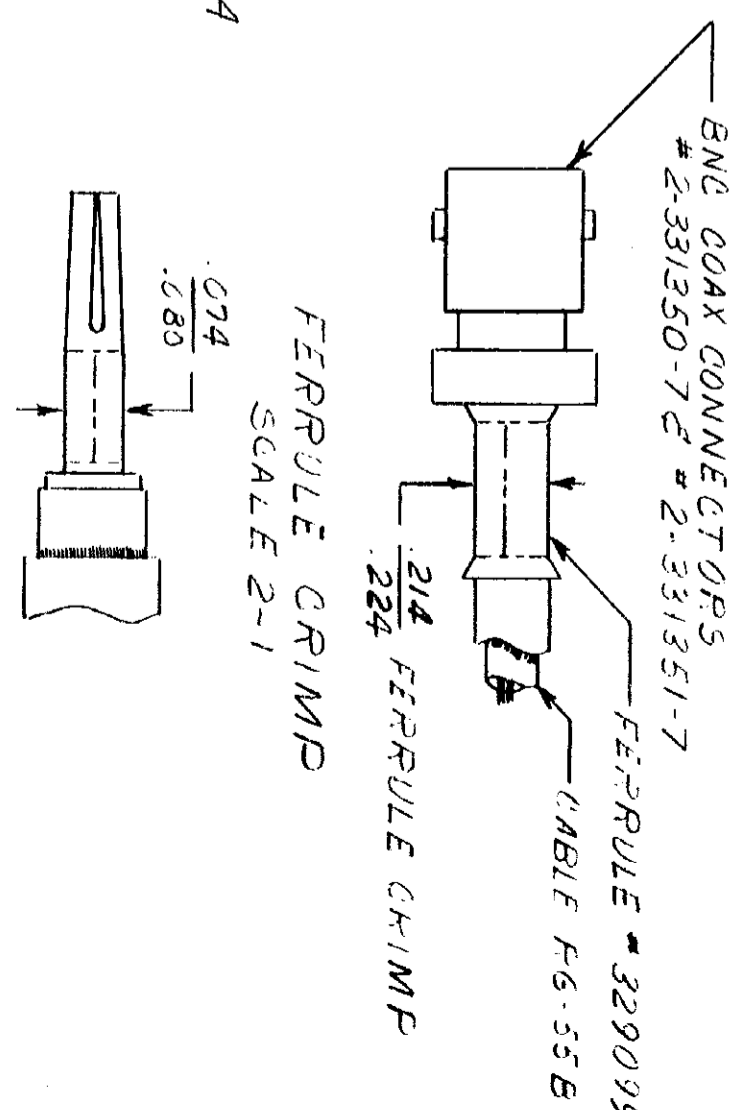
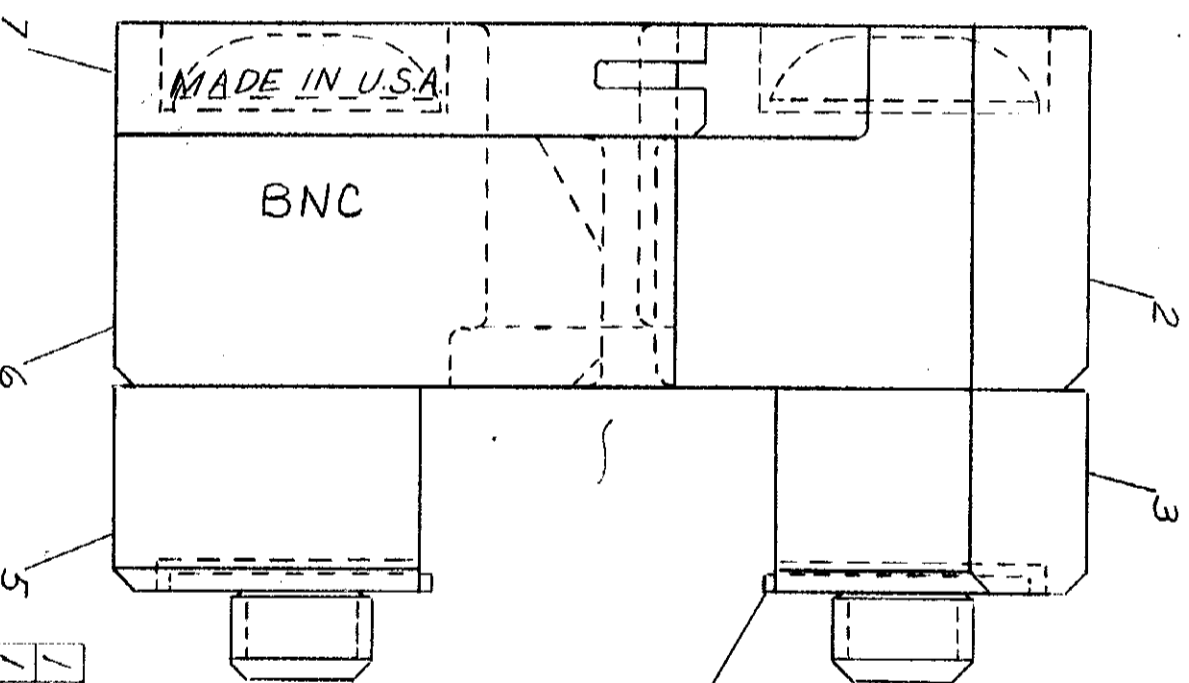
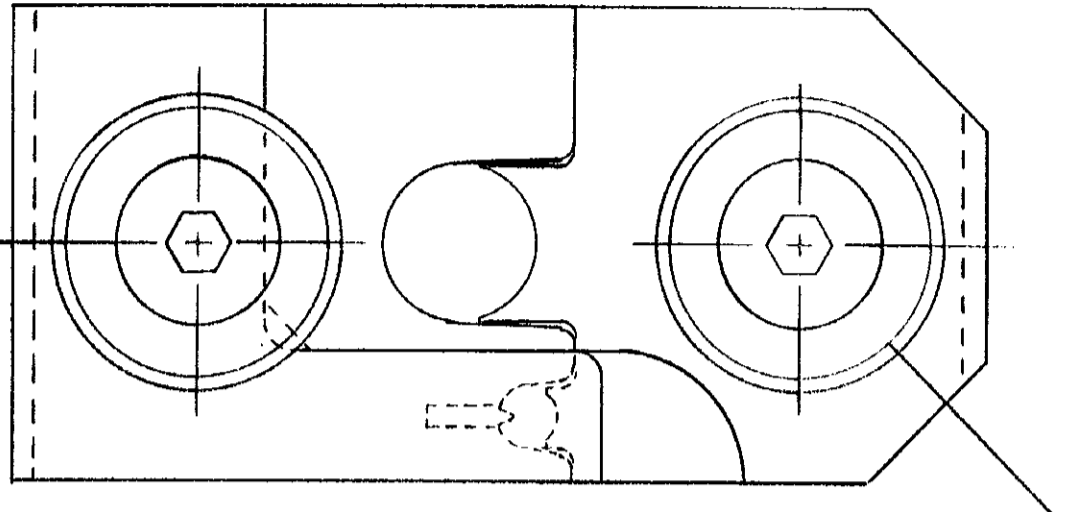


PRINT LIST  
 3  
 5

DIMENSIONS IN INCHES. DO NOT SCALE PRINT



THE CRIMP DIMENSIONS APPLY ONLY TO THE ABOVE COMBINATIONS ON A CRIMPED PRODUCT METHOD OF GAGING CRIMP DIMENSIONS  
**SUPERSEDED BY 152396**  
 2-16-75

|   |             |                |   |
|---|-------------|----------------|---|
| 1 | 6-304052-0  | LOCATOR        | 1 |
| 2 | 306508-1    | INDENTER       | 2 |
| 3 | 8-305832-8  | SPACER-LOWER   | 3 |
| 4 | 2-1-21046-3 | RING-RETAINING | 4 |
| 5 | 8-305832-7  | SPACER-UPPER   | 5 |
| 6 | 306507-1    | ANVIL          | 6 |
| 7 | 306592-1    | SCREW-SPECIAL  | 7 |

|                           |            |    |     |                          |  |      |  |
|---------------------------|------------|----|-----|--------------------------|--|------|--|
| REVISION RECORD           |            | DR |     | CHK                      |  | DATE |  |
| LTR                       | REVISION   | DR | CHK | DATE                     |  |      |  |
| A                         | SUPERSEDED | B  |     | 2/16/75                  |  |      |  |
| NUMBER                    |            |    |     | 69727                    |  |      |  |
| DESCRIPTION               |            |    |     | 69727                    |  |      |  |
| REQUIRED PER ASSEMBLY     |            |    |     |                          |  |      |  |
| DR                        |            |    |     | A. J. Reynolds 4-21-66   |  |      |  |
| CHK                       |            |    |     | S. J. ... 5-25-66        |  |      |  |
| MATERIAL AND FINISH       |            |    |     | H                        |  |      |  |
| WIRE - RANGE - INSULATION |            |    |     | RG-55                    |  |      |  |
| TOLERANCE EXCEPT AS NOTED |            |    |     | ± .015                   |  |      |  |
| SCALE                     |            |    |     | 4-1                      |  |      |  |
| CLASS                     |            |    |     | ECONOMY BNC COAX         |  |      |  |
| LOC                       |            |    |     | M B                      |  |      |  |
| NO                        |            |    |     | 69727                    |  |      |  |
| NAME                      |            |    |     | DIE ASSEMBLY             |  |      |  |
| AMERICAN AMP CORPORATION  |            |    |     | AMERICAN AMP CORPORATION |  |      |  |
| HARRISBURG, PENNSA.       |            |    |     | HARRISBURG, PENNSA.      |  |      |  |
| CUSTOMER COPY             |            |    |     | REFERENCE ONLY           |  |      |  |