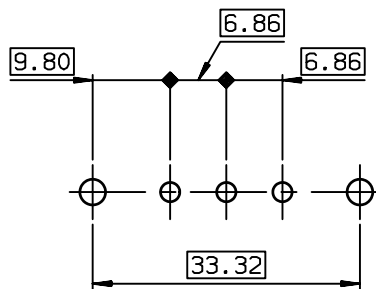


LAYOUT DIMENSIONS (after plating)
CONNECTOR SIDE VIEW



TIN LEAD PART NUMBER

DAI3W3S300H30	M3
DAV3W3S300H30	UNC 4.40
PART NUMBER	Threaded A

LEAD FREE PART NUMBER

DAI3W3S300H30LF	M3
DAV3W3S300H30LF	UNC 4.40
PART NUMBER	Threaded A

GENERAL CHARACTERISTICS AND ROHS INFORMATIONS:
SEE DRAWING C01-8639-0001

European Views

www.fciconnect.com		surface ISO 1302	tolerance std ISO 406 ISO 1101	projection mm	size A3	Scale 1.5
		TOLERANCES UNLESS OTHERWISE SPECIFIED				
Dr	JARRY	2000/12/29	ANGULAR	0.X	±0.1	
Eng	PESSON	2000/12/29	LINEAR	0.XX	±0.1	
Chr	LEGARE	2000/12/29	0.XX' ±2'	0.XXX	±0.1	ECN LS06-0095
Appr	LEGARE	2000/12/29	Product family	D-SUB	Spec ref	-
FCI		SOCKET CONNECTORS SUB D			dwg no	C01-8639-1796
		SCREWS + HARPOONS			Rev.	D
catalog no					CUSTOMER	sheet 1 of 1

rev	ecn no	dr	date
B	-	DEB	2003/09/29
C	LS05-001	MPE	2005/03/09
D	LS06-0095	LGO	2006/06/27
-	-	-	-
-	-	-	-
-	-	-	-