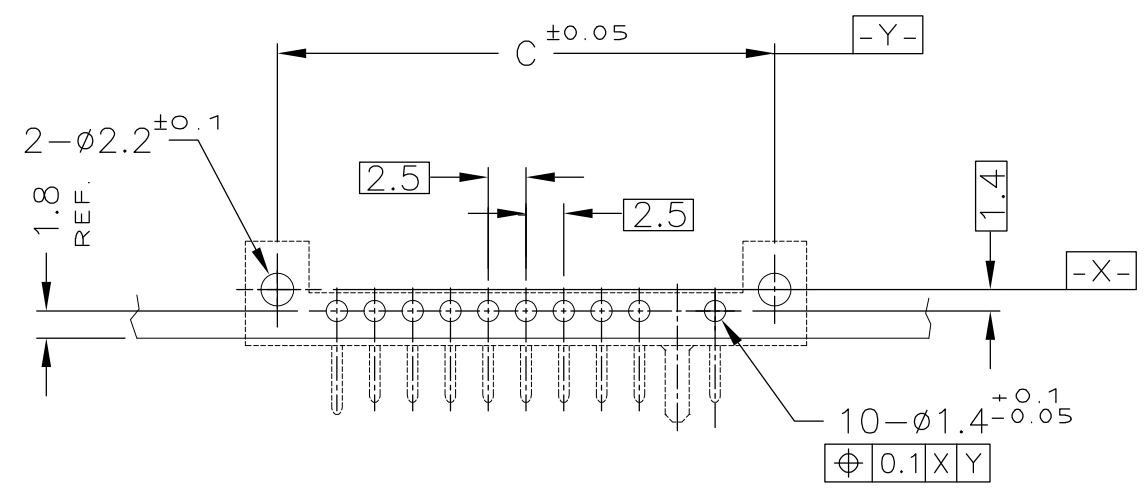
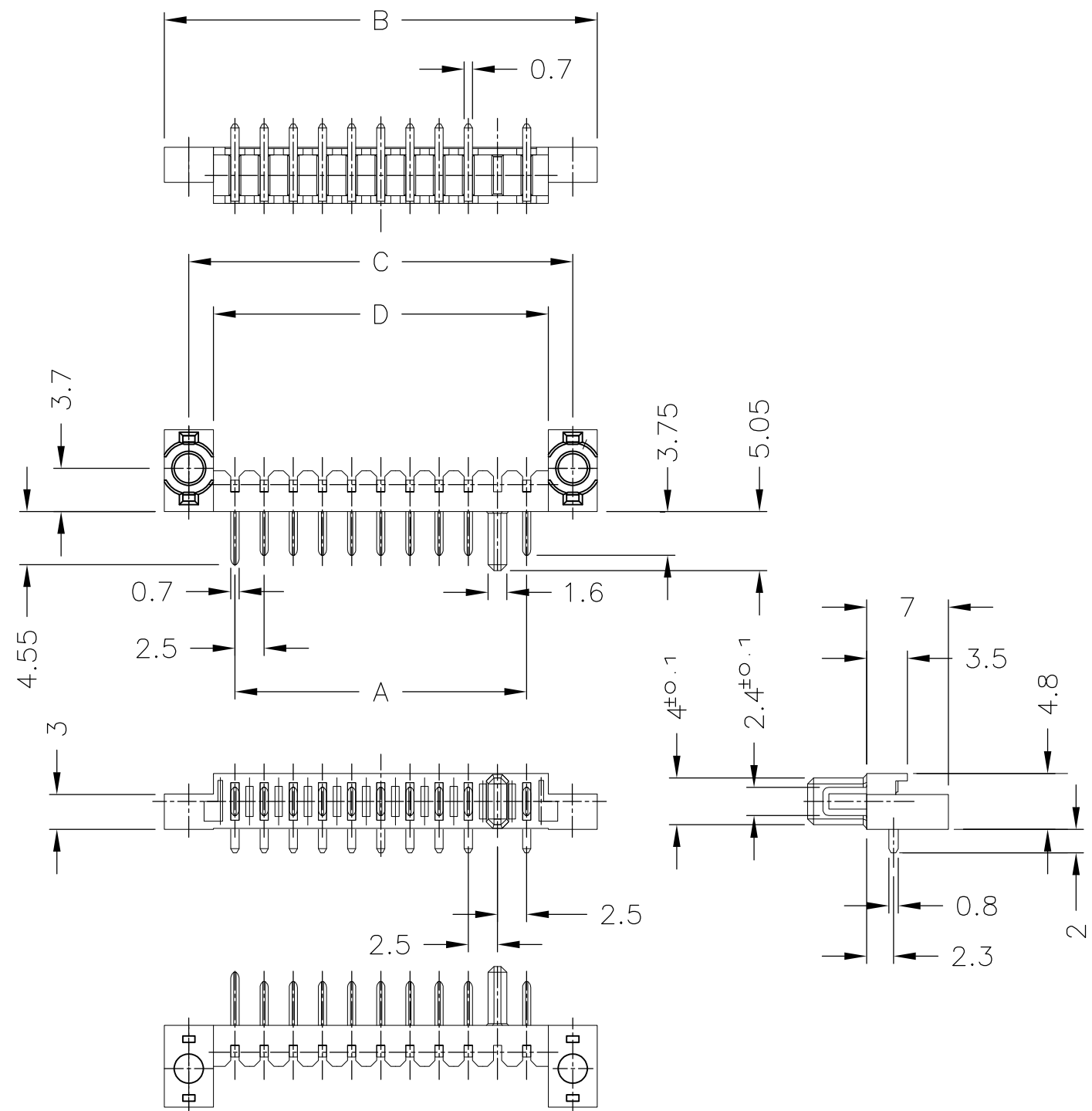


THIS DRAWING IS UNPUBLISHED. RELEASED FOR PUBLICATION  
 © COPYRIGHT BY TYCO ELECTRONICS CORPORATION. ALL RIGHTS RESERVED.

LOC	DIST	REVISIONS					
ES	-	P	LTR	DESCRIPTION	DATE	DWN	APVD
		C1		REVISED PER ECR-10-010032	11MAY2010	K.C	S.Y



RECOMMENDED P.C. BOARD LAYOUT  
 P.C. BOARD THK 0.8~1.2  
 (VIEW FROM CONNECTOR MOUNTING SIDE)

NOTE

- ① MATERIAL HOUSING : THERMOPLASTIC RESIN, UL94V-0 COLOR ; BLACK  
CONTACT : COPPER ALLOY
- ② FINISH CONTACT : Ni ALL OVER UNDER PL  
GOLD PL. AT CONTACT AREA  
GOLD FLUSH PL. AT LEAD AREA
- ③ OBSOLETE PARTS: OBSOLETE CIS STREAMLINING PER D.RENAUD/D.SINISI

OBSOLETE ③	28.7	32.9	37.1	25	10	1123822-7
	26.2	30.4	34.6	22.5	9	1123822-6
	23.7	27.9	32.1	20	8	1123822-5
	21.2	25.4	29.6	17.5	7	1123822-4
	18.7	22.9	27.1	15	6	1123822-3
	16.2	20.4	24.6	12.5	5	1123822-2
	13.7	17.9	22.1	10	4	1123822-1
	D	C	B	A	N (POS)	P/N

THIS DRAWING IS A CONTROLLED DOCUMENT.

DIMENSIONS: MM	TOLERANCES UNLESS OTHERWISE SPECIFIED: ∅-PLC ± 0.15 1-PLC ± 2-PLC ± 3-PLC ± 4-PLC ± ANGLES ± 3' FINISH
①	②

DWN	T.KUSUHARA	31MAR98
CHK	I.ENOMOTO	31MAR98
APVD	I.ENOMOTO	31MAR98
PRODUCT SPEC	108-5775	
APPLICATION SPEC		
WEIGHT		
CUSTOMER DRAWING		

WIRE RANGE		INSULATION DIA	
		Tyco Electronics Corporation Shanghai, P.R.China, 200233	
		NAME PLUG ASSY 2.5mm PITCH BATTERY CONNECTOR (10POS.) WITHOUT NUT PLATE	
SIZE	CAGE CODE	DRAWING NO	RESTRICTED TO
A3	00779	C-1123822	-
SCALE		SHEET	REV
2:1		1 OF 1	C1