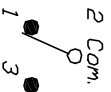


RECOMMENDED PCB LAYOUT



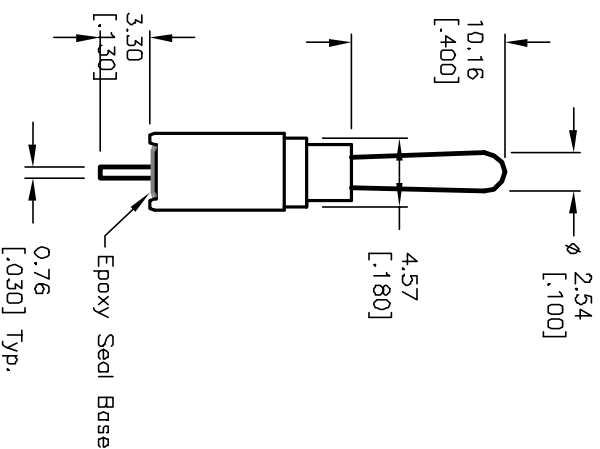
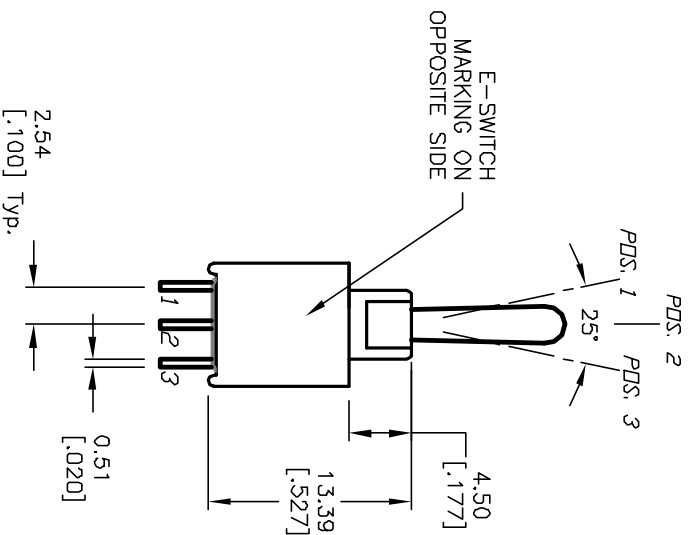
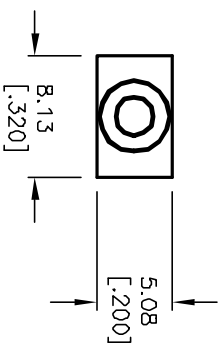
CIRCUIT: SPDT CONTACT CONFIGURATION

| SWITCH FUNCTION | | |
|-----------------|--------|--------|
| PDS. 1 | PDS. 2 | PDS. 3 |
| | | |
| <DN> | DFFF | <DN> |
| 2-3 | DPEN | 2-1 |

NOTES:

1. ALL DIMENSIONS IN MM [INCH]
2. GENERAL TOLERANCE: X.X=±0.4 X.XX=±0.25
3. TERMINAL NUMBERS FOR REF ONLY
4. RATING: 3A @120V AC or 28VDC; 1A @250VAC;
5. FIXED TERM. & MOVING CONTACT: Copper ALLOY W/Silver plate.
6. ELECTRIC LIFE: 50,000 make-and-break cycles at full load.
7. INSULATION RESISTANCE: 1,000 Mega-ohm min.
8. DIELECTRIC STRENGTH: 1,000 V RMS @sea level.
9. OPERATING TEMP.: -30°C to +85°C

()=Momentary



| REV. | ECN NO. | DESCRIPTION | DATE | CHK'D |
|------|---------|------------------------|---------|-------|
| B | 12200 | REVISED FUNCTION CHART | 5/31/02 | CB |
| A | 10762 | REVISED AND REDRAWN | 7/14/00 | MM |

| TITLE | SCALE | DATE | DR | DWG | REV |
|--------------------------|-------|---------|----|---------|-----|
| 2004 WMSP-4 T1 A1 M2 Q E | 2:1 | 7/14/00 | MM | T201380 | B |



THE INFORMATION CONTAINED IN THIS DOCUMENT IS PREPARED FOR E-SWITCH AND IS NOT TO BE COPIED OR TRANSMITTED