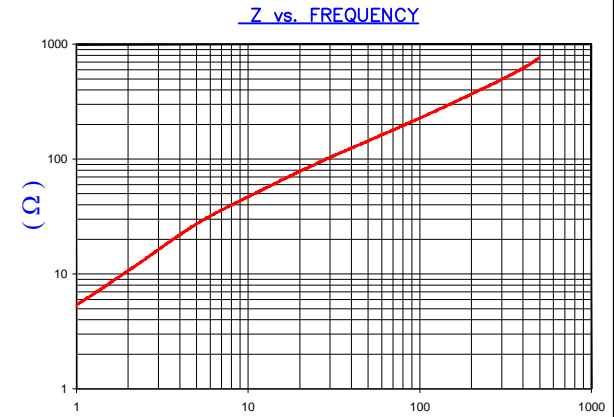
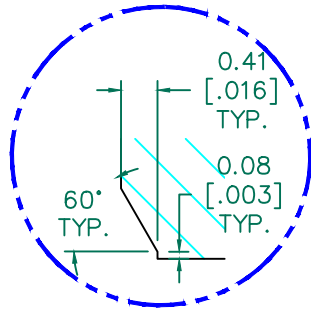


IMPEDANCE (Z)			
Frequency	25 MHz	100 MHz	300 MHz
Nominal (REF)	95 Ω	230 Ω	480 Ω
Minimum	- Ω	184 Ω	- Ω



FREQUENCY (MHz)
 AGILENT E4991A Impedance/Material Analyzer
 HP 16092A-Test Fixture, REF # 3107



DETAIL "A"
 CHAMFER
 SCALE=12:1

UNCONTROLLED DOCUMENT



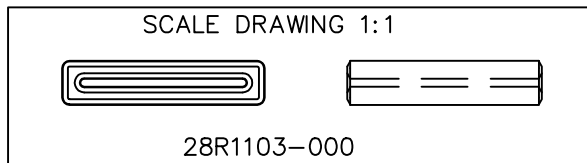
NOTES: UNLESS OTHERWISE SPECIFIED

1. COSMETIC SPECIFICATION REFER TO WI-QA-038.

FERRITE CORE DIMENSIONS (SPEC): mm [in.]

A	28.00 [1.102]	±	0.51 [.020]
B	23.00 [.906]	±	0.35 [.014]
C	27.00 [1.063]	±	0.45 [.018]
D	6.10 [.240]	+	0.36 [.014]
		-	0.20 [.008]
E	1.10 [.043]	+	0.25 [.010]
		-	0.10 [.004]

WEIGHT/1000 19.12 kgs [42.15 Lbs]



DIMENSIONS ARE IN mm[INCHES].				This print is the property of Laird Tech. and is loaned in confidence subject to return upon request and with the understanding that no copies shall be made without the written consent of Laird Tech. All rights to design or invention are reserved.		Laird	
PROJECT/PART NUMBER:				REV	DRAWN BY:		
C	UPDATE COMPANY LOGO	05/29/15	QIU	28R1103-000	C	JRK	
B	UPDATE Z SPEC AND COMPANY LOGO	07/27/07	JRK	DATE: 03/01/04	SCALE: 2.5 : 1	MATERIAL:	
A	ORIGINAL DRAFT	03/01/04	JRK	CAD # 28R1103-000-C	TOOL # R1103	FERRITE	
REV	DESCRIPTION	DATE	INT				