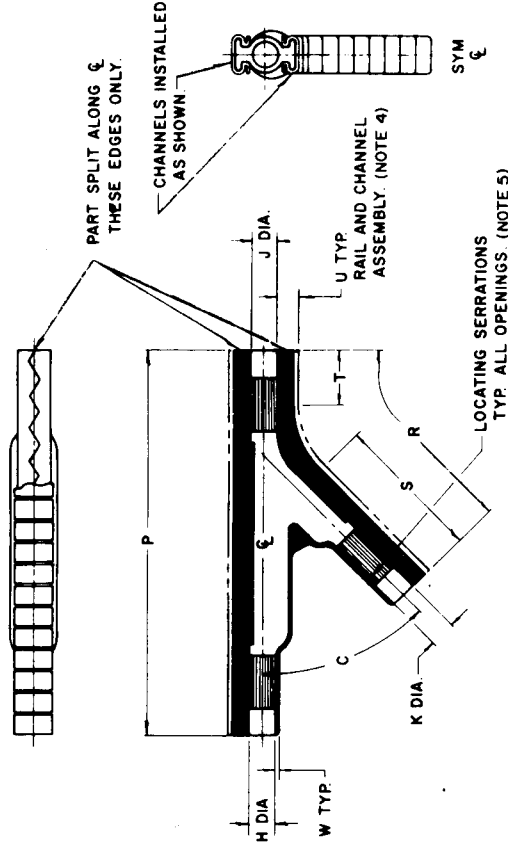


THERMOFIT • SPECIFICATION CONTROL DRAWING • MOLDED PARTS

1. All dimensions are in inches; all angles are in degrees.
2. Dimensions appearing in table below are as follows:
 a - As supplied b - After unrestricted recovery
3. Weight shown in table of dimensions is based on polyolefin part.
4. See Drawing 003A001 for channel dimensions.
 Two channels supplied with each part.
5. See Drawing 202C221-301 for convolex tubing adaptor.

NOTES



AS SUPPLIED

AFTER UNRESTRICTED RECOVERY

Matl No.	Description	Rayclad Matl. Spec.	Specific Grav. Max.
3	Polyolefin	RT-301	1.40

Add material number as suffix to part number;
 Example - Order 341A113-3 when polyolefin is required.

ORDERING INFORMATION

TABLE OF DIMENSIONS

PART NO.	H & J		K		P		R		S		T		U		W		C		Weight		
	Min	Max	Min	Max	±10%	±10%	±10%	±10%	±10%	±10%	±10%	±10%	±20%	±20%	±10°	±10°	lbs	Max			
	a	b	a	b	a	b	a	b	a	b	a	b	a	b	a	b	a	b			
341A113-	.76	.25	.76	.25	3.57	3.57	2.57	2.57	-	1.36	-	.50	-	.17	-	.04	-	45		.034	
341A123-	1.00	.51	.87	.42	5.17	5.17	4.33	4.33	-	2.83	-	.75	-	.19	-	.06	-	45		.055	
341A134-	1.46	.77	1.10	.39	5.77	5.77	5.17	5.17	-	3.29	-	1.00	-	.21	-	.07	-	45		.060	
PART NO.	This Part Fits		Rayclad Convolex Size		Length		No. Sections		Quantity												
	H & J		K		P	R	P	R													
341A113-	9/30 - 3/8		9/32 - 3/8		3.57 2.57		18 13		2												
341A123-	3/8 - 5/8		9/32 - 1/2		5.17 4.33		26 22		2												
341A134-	5/8 - 1		9/32 - 5/8		5.77 5.17		29 26		2												

Raychem

DD	PART DESCRIPTION	REV LTR
DRN	TRANSITION, 45°, WRAPAROUND	341A113 thru 134
CHK D		
AUTH		
HP		

PART NO. **341A113 thru 134**
 DATE February 26, 1979