

Customer Information Sheet

DRAWING No.: D39XX-42

SHEET 2 OF 2

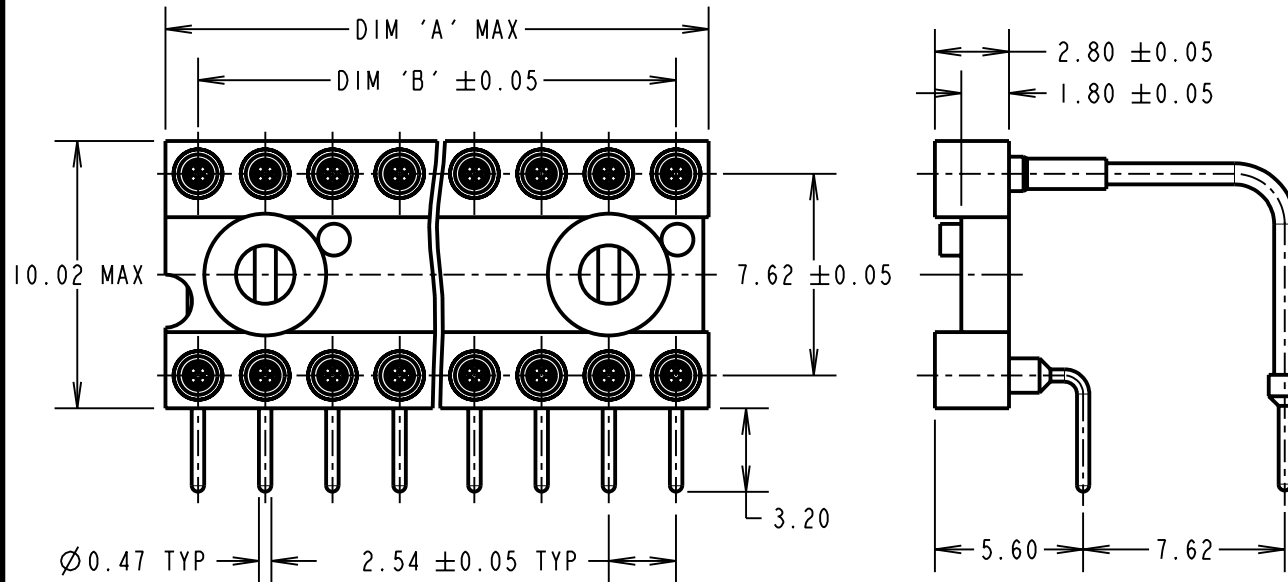
IF IN DOUBT - ASK

©

NOT TO SCALE

THIRD ANGLE PROJECTION

ALL DIMENSIONS IN mm



SPECIFICATIONS:

MATERIALS:

MOULDING = GLASS FILLED PCT, BLACK, UL94V-0
 CONTACT SHELL = BRASS
 CONTACT CLIP = BERYLLIUM COPPER

FINISH:

CONTACT SHELL = 5µ 100% TIN
 CONTACT CLIP = 0.25µ GOLD

ELECTRICAL:

CURRENT RATING = 1A
 VOLTAGE RATING = 100V AC, 150V DC
 CONTACT RESISTANCE = 10 MILLIOHMS MAX
 INSULATION RESISTANCE = 10,000 MEGOHMS MIN
 DIELECTRIC WITHSTANDING = 1,000V AC MIN

MECHANICAL:

INSERTION FORCE (Ø0.43mm GAUGE) = 3.0N MAX
 WITHDRAWAL FORCE (Ø0.43mm GAUGE) = 0.5N MIN
 DURABILITY = 100 CYCLES MIN

ENVIRONMENTAL:

TEMPERATURE RANGE = -55°C TO +125°C

ORDER CODE:

D39XX-42

No. OF CONTACTS ————
 6, 8, 14, 16, 18, 20, 24

FINISH ————
 100% TIN SHELL, GOLD CLIP

PART No.	No. OF CONTACTS	DIM 'A'	DIM 'B'
D3906-42	6	7.60	5.08
D3908-42	8	10.10	7.62
D3914-42	14	17.70	15.24
D3916-42	16	20.30	17.78
D3918-42	18	22.80	20.32
D3920-42	20	25.30	22.86
D3924-42	24	30.40	27.94

NOTES:

1. RECOMMENDED HOLE SIZE = Ø0.80mm.
2. RECOMMENDED PC BOARD THICKNESS = 1.4 TO 2.0mm.
3. RECOMMENDED MATING PIN DIAMETER = Ø0.56-0.40mm.
4. MAXIMUM CONTACT DEPTH = 2.40mm.
 MAXIMUM MATING PIN LENGTH = 3.65mm.

CP	2	15.01.10	10640
NAME	ISS.	DATE	C/NOTE
APPROVED: C.PENROSE			
CHECKED: R.ADDE			
DRAWN: W.J.BOURNE			
CUSTOMER REF.:			
ASSEMBLY DRG:			

HARWIN

HARWIN USA TEL: 603 893 5376 FAX: 603 893 5396 mis@harwin.com	HARWIN Europe (UK) TEL: 023 9231 4545 FAX: 023 9231 4590 mis@harwin.co.uk	HARWIN Asia TEL: +65 6 779 4909 FAX: +65 6 779 3868 mis@harwin.com.sg
--	--	--

THIS DRAWING AND ANY INFORMATION OR DESCRIPTIVE MATTER SET OUT HEREON ARE CONFIDENTIAL AND COPYRIGHT PROPERTY OF THE HARWIN GROUP AND MUST NOT BE DISCLOSED, LOANED, COPIED OR USED FOR MANUFACTURING, TENDERING OR FOR ANY OTHER PURPOSE WITHOUT THEIR WRITTEN PERMISSION.

TOLERANCES
 X. = ±1mm
 X.X = ±0.25mm
 X.XX = ±0.10mm
 X.XXX = ±0.01mm
 ANGLES = ±5°
 UNLESS STATED

MATERIAL:
 SEE ABOVE
FINISH: SEE ABOVE
S/AREA: mm²

TITLE: 2.54mm PITCH DIL IC DISPLAY SOCKET (CLOSED FRAME)
DRAWING NUMBER: **D39XX-42**
 SHT 2 OF 2