

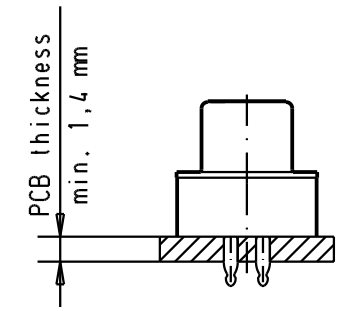
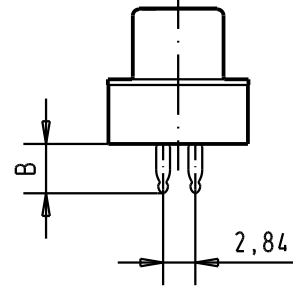
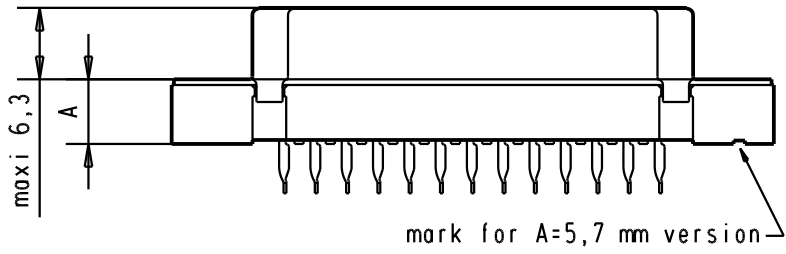
5

4

3

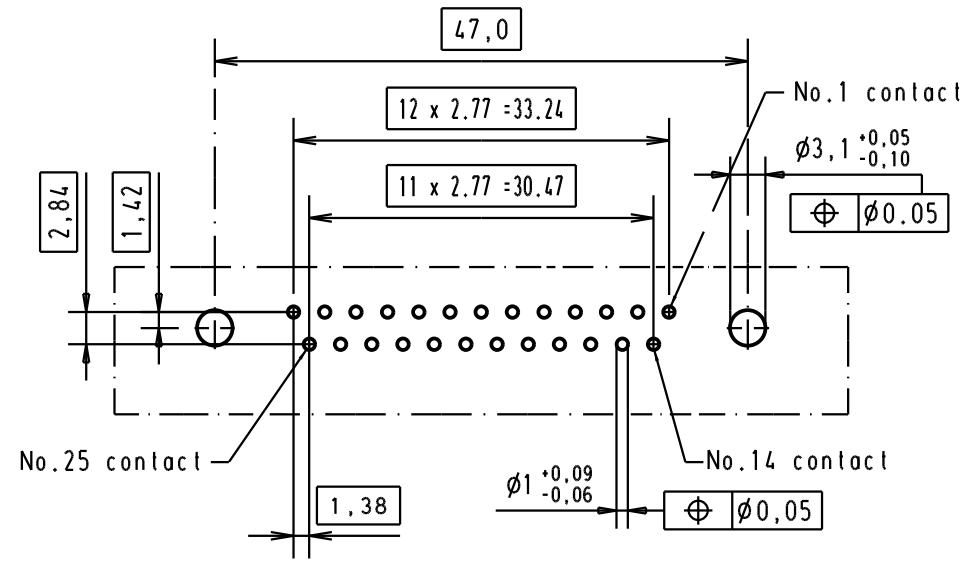
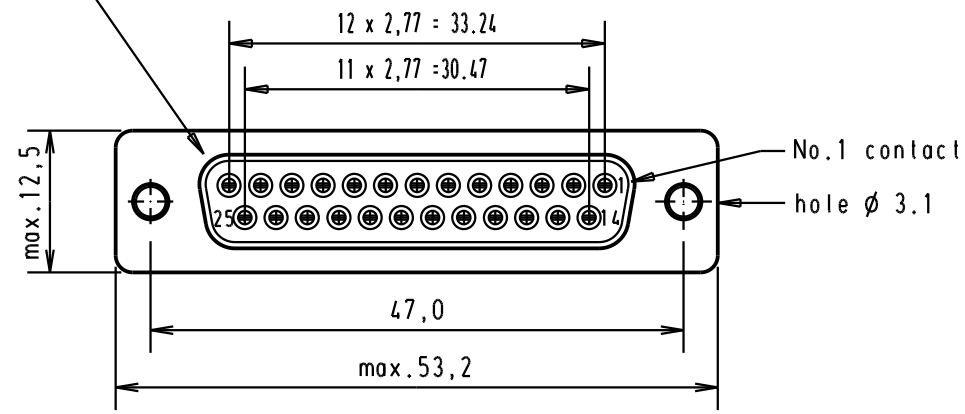
2

1





PCB layout hole component side
(PCB holes plating : Tin)

Mating face according to : MIL-C-24308 / DIN 41652 / CECC 75301-802



A

09663147500	3	6	4.20						Dat.	Name	 All Dim. in mm Orig. Size DIN A 3	D-Sub 25 poles straight female connector with press-in termination, version ø 3.1 hole.	Maßstab/ Scale 2,5:1
09663146500	2	6	4.20				Detail.	30/06/95	jfb				
09663145500	0.76 µm Au	6	4.20	32128	08/07/04	T.R.	Insp.						
09663147504	3	5.7	4.35	29731	05/11/01	S.H.	Stand.						
09663146504	2	5.7	4.35	27980	05/03/01	jfb							
09663145504	0.76 µm Au	5.7	4.35	16236	30/06/95	jfb							
Part number	Performance level	A±0.2	B±0.2	Mod.	Dat.	Name	HARTING EURL F-95972 Paris				TB 0966314x50x	Blatt/ Page 1 /	
											Sub.		