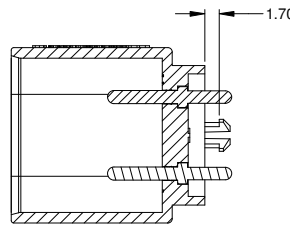
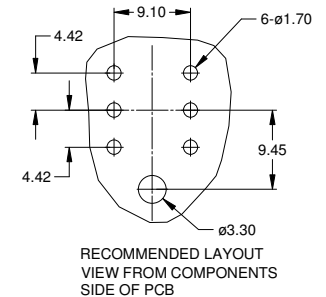
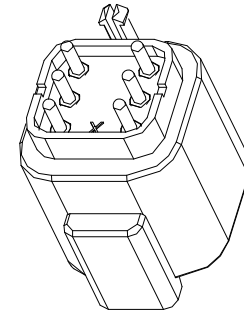
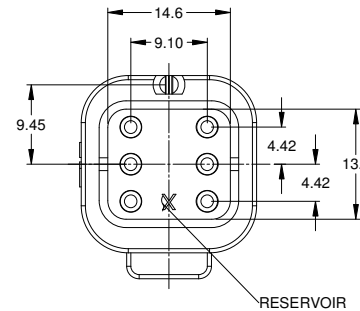
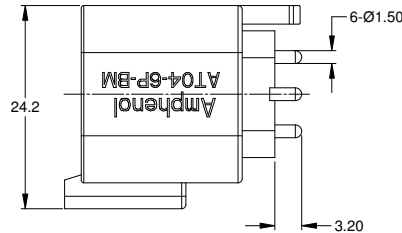
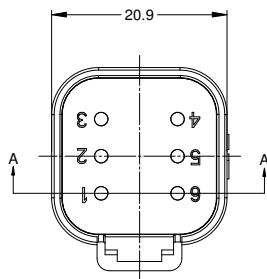
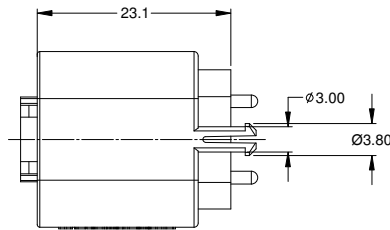


REVISIONS					
REV	ECO	DESCRIPTION	DATE	BY	APPR
A1	-	RELEASE NEW DWG FORMAT	SEP/24/14	ORION	
A2	-	UPDATE DRAWING	OCT/06/14	JARRY	
A3	-	UPDATE DRAWING	OCT/21/14	JARRY	
A4	-	ADD NICKEL PLATING VERSION	APR/24/15	ORION	
A5	-	CHANGE PC TAIL LENGTH	AUG/04/15	ORION	TOMMY
A6	-	REMOVE A DIMENSION AND ADD COLOR	AUG/10/15	ORION	TOMMY



SECTION A-A

NOTES: UNLESS OTHERWISE SPECIFIED

- MATERIAL:  
HOUSING: THERMOPLASTIC; COLOR: BLACK  
CONTACT: COPPER ALLOY
- MODIFICATIONS: PCB MOUNT
- SPECIFICATIONS:
  - CURRENT RATING: 13 AMPS
  - OPERATING TEMPERATURE: -55°C TO +125°C
  - DIELECTRIC WITHSTANDING VOLTAGE: LESS THAN 2 MILLIAMPS CURRENT LEAKAGE @ 1500 VOLTS AC.
  - INSULATION RESISTANCE: 1000 MEGOHMS MIN @ 25°C.
  - MOISTURE RESISTANCE: IP67 ( MATED CONDITION )
  - MATING CYCLE DURABILITY: 100 CYCLES
  - RoHS COMPLIANT
- MATING PART: AT06-6S\* PLUG  
(\* = MODIFICATIONS AND COLORS)
- ALL DIMENSIONS ARE FOR REFERENCE USE ONLY.

AT04-2P-BMXX VARIANTS		
CONTACT PLATING	POTTING OR NOT IN RESERVOIR	PART NUMBER
GOLD	NO POTTING	AT04-6P-BM01
GOLD	POTTING	AT04-6P-BM02
NICKEL	NO POTTING	AT04-6P-BM03
NICKEL	POTTING	AT04-6P-BM04

SEE PART NUMBER		CHART		DESCRIPTION		ITEM
PART NUMBER		PART NUMBER		DESCRIPTION		ITEM
QUANTITY		MATERIALS LIST				
UNLESS OTHERWISE SPECIFIED		SIGNATURES		DATE		<p style="text-align: center;"><b>Amphenol</b></p> <p style="text-align: center;">Sine Systems - www.amphenol-sine.com 44724 Morley Drive Clinton Township, MI 48036</p> <p style="text-align: center;">RECEPTACLE, 6 PIN, PCB, BOARD MOUNT</p>
1) All dimensions are in metric (mm).		DRAWN: ORION.LI		SEP/24/14		
2) Tolerances are as follows:		CHECKED:				
1 PL DEC ±0.30   Fractions ±1/64		ENGINEER:				
2 PL DEC ±0.15   Angles ±1°		APPROVAL: TOMMY.XIE		SEP/24/14		
3 PL DEC ±0.08		CUSTOMER:				
3) Note reference =		PROCESS SPECIFICATIONS:		THIS DRAWING IS SUPPLIED FOR INFORMATION ONLY. DESIGN FEATURES, SPECIFICATIONS AND PERFORMANCE DATA SHOWN HEREON ARE THE PROPERTY OF THE AMPHENOL CORPORATION. NO RIGHTS OF REPRODUCTION ARE IMPLIED. ALL DIMENSIONS ARE SUBJECT TO NORMAL MANUFACTURING VARIATIONS.		
MATERIAL SPECIFICATIONS:		NEXT ASSY:		SCALE: NONE		SIZE: B C- DWG NO: AT04-6P-BMXX REVISION: A6 SHEET 1 OF 1

TITLE: RECEPTACLE, 6 PIN, PCB BOARD MOUNT  
 DWG NO.: AT04-6P-BMXX  
 REV: A6  
 SH: 1  
 OF: 1