

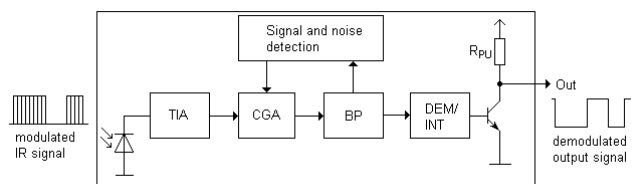
### Infrared Receiver Module EAIRMEA3



#### Pin Configuration

1. OUT
2. GND
3. V<sub>CC</sub>

#### Block Diagram



#### Features

- High protection ability against EMI
- Ellipsoid lens for improved reception characteristics
- Available for various carrier frequencies
- Min burst length: 10 cycles
- Min gap length: 14 cycles
- Low operating voltage and low power consumption
- High immunity against ambient light
- High immunity against TFT backlight
- Long reception range
- High sensitivity
- Pb free and RoHS compliant
- Compliance with EU REACH
- Compliance Halogen Free .(Br <900 ppm ,Cl <900 ppm , Br+Cl < 1500 ppm)

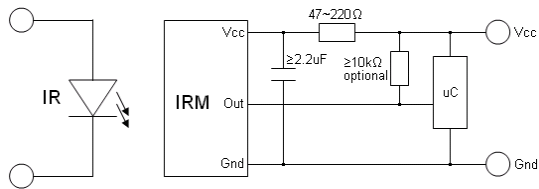
#### Description

- The EAIRMEA3 devices are DIP type infrared receivers which have been developed and designed by using the latest IC technology.
- The PIN diode and preamplifier are assembled onto a lead frame and molded into a black epoxy package which operates as an IR filter. The demodulated output signal can directly be decoded by a microprocessor.

#### Applications

- AV equipment such as TV, VCR, DVD, CD, MD, etc.
- CATV set top boxes
- Multi-media Equipment
- Other devices using IR remote control

**Application Circuit**



The RC Filter must be connected as close as possible to Vcc and GND pins.

**Parts Table**

| Model No. | Carrier Frequency |
|-----------|-------------------|
| EAIRMEA3  | 38 kHz            |

**Absolute Maximum Ratings (T<sub>a</sub>=25°C)**

| Parameter                           | Symbol | Rating    | Unit |
|-------------------------------------|--------|-----------|------|
| Supply Voltage                      | Vcc    | 6         | V    |
| Operating Temperature               | Topr   | -20 ~ +80 | °C   |
| Storage Temperature                 | Tstg   | -40 ~ +85 | °C   |
| Soldering Temperature <sup>*1</sup> | Tsol   | 260       | °C   |

<sup>\*1</sup> 4mm from mold body for less than 10 seconds

**Electro-Optical Characteristics (Ta=25°C, Vcc=3V)**

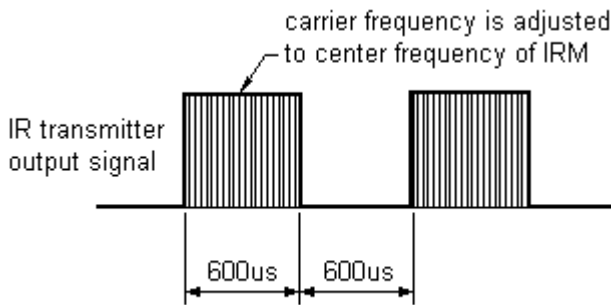
| Parameter                 | Symbol          | MIN.                 | TYP. | MAX. | Unit | Condition                               |
|---------------------------|-----------------|----------------------|------|------|------|---|
| Current consumption       | I <sub>CC</sub> | ---                  | 0.4  | 0.6  | mA   | No input signal                         |
| Supply voltage            | V <sub>CC</sub> | 2.7                  | -    | 5.5  | V    |   |
| Peak wavelength           | λ <sub>p</sub>  | ---                  | 940  | ---  | nm   |   |
| Reception range           | L <sub>0</sub>  | 14                   | ---  | ---  | m    | See chapter<br>,Test method'            |
|                           | L <sub>45</sub> | 6                    | ---  | ---  |      |   |
| Half angle(horizontal)    | φ <sub>h</sub>  | ---                  | ±35  | ---  | deg  |   |
| Half angle(vertical)      | φ <sub>v</sub>  | ---                  | ±25  | ---  | deg  |   |
| High level pulse width    | T <sub>H</sub>  | 450                  | ---  | 700  | μs   | Test signal<br>according to<br>figure 1 |
| Low level pulse width     | T <sub>L</sub>  | 500                  | ---  | 750  | μs   |   |
| High level output voltage | V <sub>OH</sub> | V <sub>CC</sub> -0.4 | ---  | ---  | V    |   |
| Low level output voltage  | V <sub>OL</sub> | ---                  | 0.2  | 0.5  | V    | I <sub>SINK</sub> ≤ 2mA                 |
| Internal pull up resistor | R <sub>PU</sub> | 85                   | 100  | 115  | kΩ   |   |

**Test method**

The specified electro-optical characteristics are valid under the following conditions.

1. Measurement environment  
 A place without extreme light reflections.
2. External light  
 The environment contains an ordinary, white fluorescent lamp without high frequency modulation. The color temperature is 2856K and the illumination at the IR receiver is less than 10 Lux ( $E_v \leq 10\text{Lux}$ ).
3. Standard transmitter  
 The test transmitter is calibrated by using the circuit shown in figure 2. The radiation intensity of the transmitter is adjusted until  $V_o=400\text{mVp-p}$ . Both, the test transmitter and the photo diode, have a peak wavelength of 940nm. The photo diode for calibration is PD438B ( $\lambda_p=940\text{nm}$ ,  $V_r=5\text{V}$ ).
4. The measurement system is shown in Fig.-3

Fig.-1 Transmitter Wave Form



D.U.T output Pulse

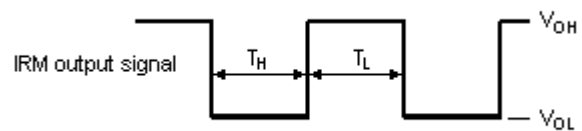


Fig.-2 standard transmitter calibration

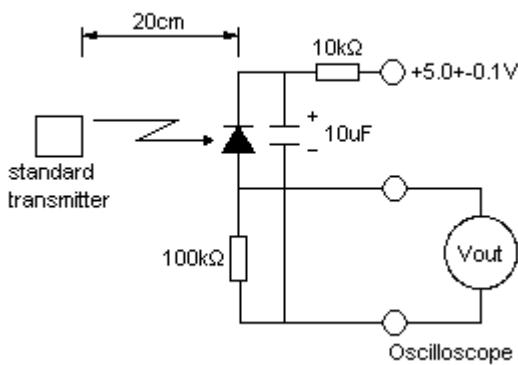
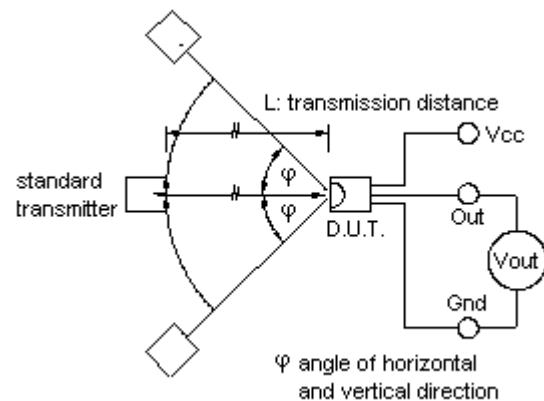
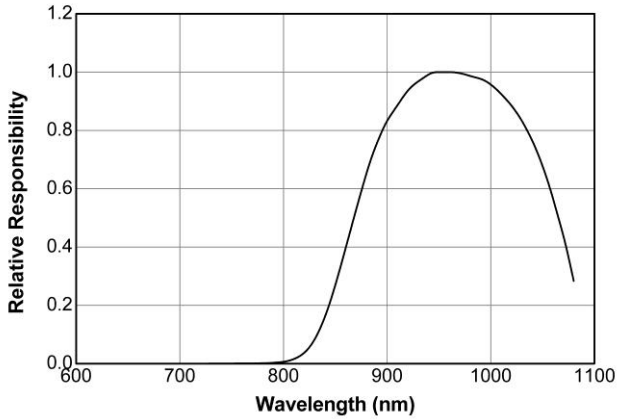


Fig.-3 Measuring System

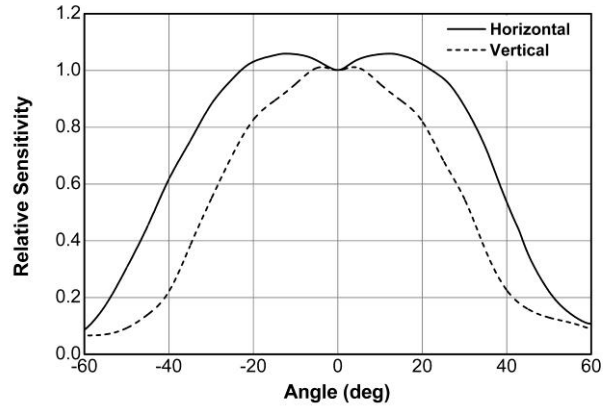


**Typical Electro-Optical Characteristic Curves**

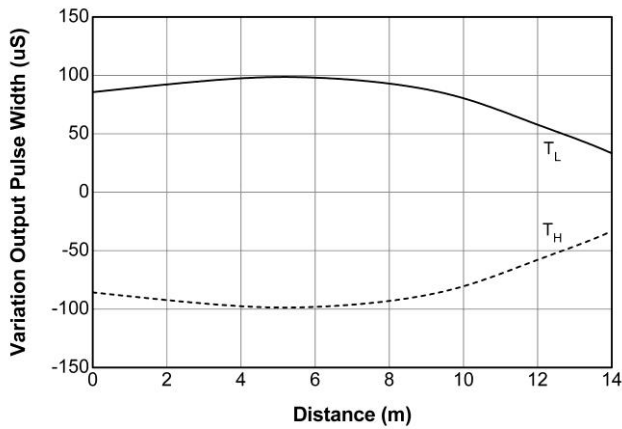
**Fig.4 Relative Responsibility vs. Wavelength**



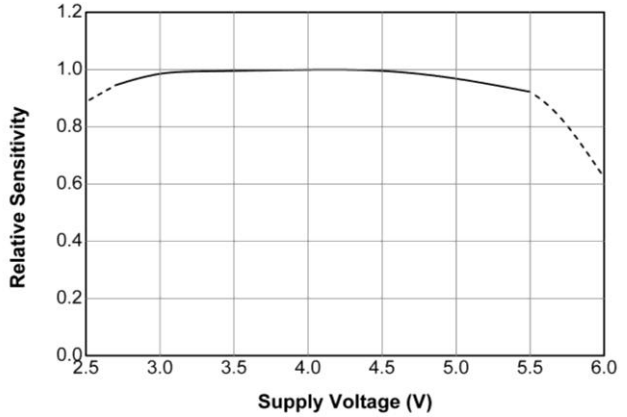
**Fig.5 Relative Sensitivity vs. Angle**



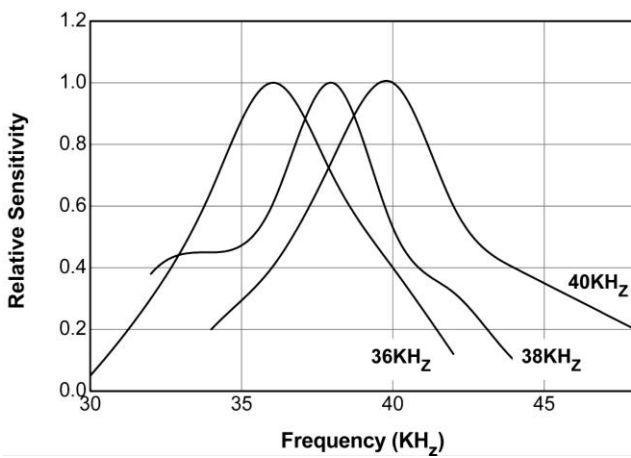
**Fig.6 Variation Output Pulse Width vs. Distance**



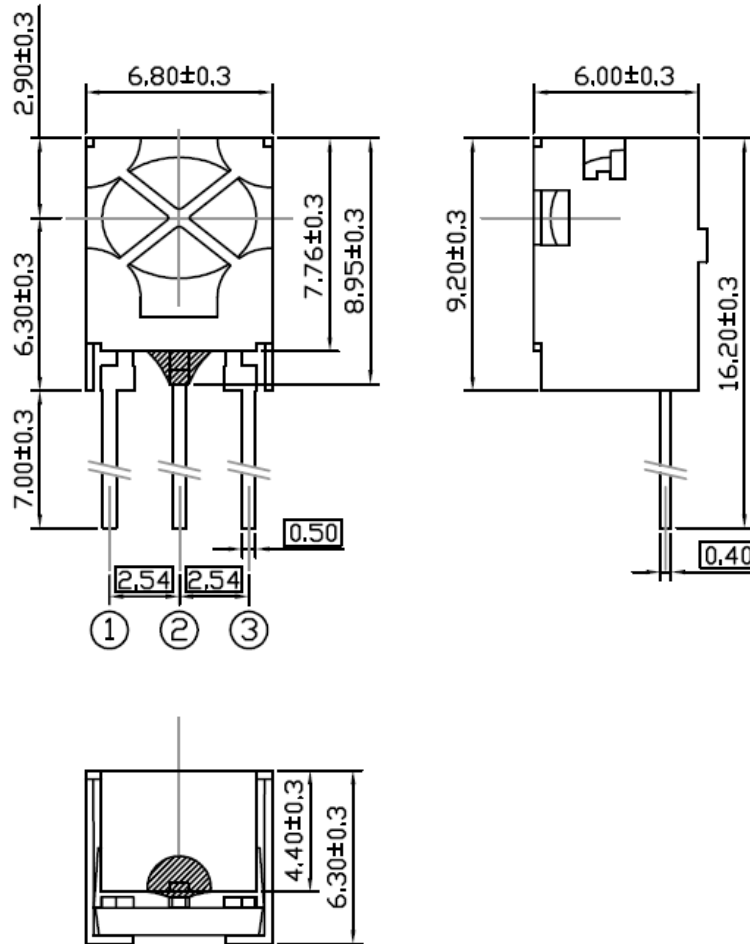
**Fig.7 Supply Voltage vs. Distance**



**Fig.8 Relative Sensitivity vs. Frequency**



**Package Dimensions**  
 (Dimensions in mm)



**Notes:**  
 Tolerances unless mentioned  $\pm 0.3$ mm. Unit: mm



### Code information

| Protocol   | Suitable | Protocol        | Suitable |
|------------|----------|-----------------|----------|
| JVC        | Yes      | RCA             | No       |
| Matsushita | Yes      | Sharp           | Yes      |
| Mitsubishi | Yes      | Sony 12 Bit     | Yes      |
| NEC        | Yes      | Sony 15 Bit     | Yes      |
| RC5        | Yes      | Sony 20Bit      | Yes      |
| RC6        | Yes      | Toshiba         | Yes      |
| RCMM       | No       | Zenith          | Yes      |
| RCS-80     | No       | Continuous Code | Yes      |

### Packing Quantity

1000 pcs / Box  
10 Boxes / Carton

### DISCLAIMER

1. Above specification may be changed without notice. Everlight Americas will reserve authority on material change for above specification.
2. When using this product, please observe the absolute maximum ratings and the instructions for use outlined in these specification sheets. Everlight Americas assumes no responsibility for any damage resulting from use of the product which does not comply with the absolute maximum ratings and the instructions included in these specification sheets.
3. These specification sheets include materials protected under copyright of Everlight Americas. Reproduction in any form is prohibited without the specific consent of Everlight Americas.