

SAFETY ORGANIZATION(S).

THIS FILTER HAS BEEN FORMALLY RECOGNIZED, CERTIFIED OR APPROVED BY THE LISTED AGENCY. THEREFORE, ALL TEST/REQUIREMENTS SPECIFIED IN THE LATEST REVISION OF THE FOLLOWING AGENCY STANDARDS HAVE BEEN MET.

- UL 1283, 544
- CSA 22-2, NO. 0, 0.4, B
- VDE 565-3, 625

OPERATING SPECIFICATIONS.

- LINE VOLTAGE/CURRENT, 6 AMP., 120/250 VAC
- 50-60Hz
- LINE FREQUENCY, 2µA @ 120V 60Hz
- MAX. LEAKAGE CURRENT, EACH LINE TO GROUND 5µA @ 250V 50Hz
- OPERATING AMBIENT TEMP. RANGE, -10°C TO +40°C @ RATED CURRENT, I_r

IN AN AMBIENT, I₀, HIGHER THAN 40°C, THE MAXIMUM OPERATING CURRENT, I₀, IS AS FOLLOWS:

$$I_0 = I_r \sqrt{\frac{85 - I_0}{45}}$$

RELIABILITY SPECIFICATIONS.

- STORAGE TEMPERATURE, -25°C TO +85°C
- HUMIDITY, 21 DAYS @ 40°C 95% RH
- CURRENT OVERLOAD TEST, 6 TIMES RATED CURRENT FOR 8 SECONDS

TEST SPECIFICATIONS.

- INDUCTANCE, .52mH NOMINAL
- CAPACITANCE, (MEASURED @ 1 KHz, 0.25 VAC MAX., 25°C ±1°C) LINE TO LINE, .047µF ±20%

- DISCHARGE RESISTOR, 1.5 MΩ
- LINE/GROUND AND LINE/LINE INSULATION RESISTANCE (W/O DISCHARGE RESISTOR) 6000 MΩ (MIN) AT 100 VDC 20°C AND 50% RH

RECOMMENDED RECEIVING INSPECTION HIPOIL.

- LINES TO GROUND, 2250 VDC FOR 1 MINUTE
- LINE TO LINE, 1450 VDC FOR 1 MINUTE

FILTER APPROVAL.
 THE BEST WAY TO SELECT AND QUALIFY A FILTER IS FOR YOUR ENGINEERING TO TEST THE UNIT IN YOUR EQUIPMENT.

TOLERANCE EXCEPT AS NOTED

DECIMAL, .XXX	.XX	.X	ANGLES
ENGLISH, ±.025	±1.		
METRIC, ±			

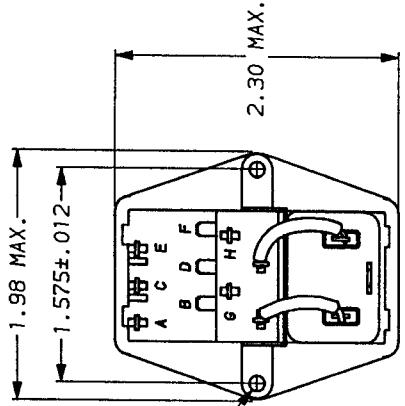
MATERIAL: AS SUPPLIED

FINISH:

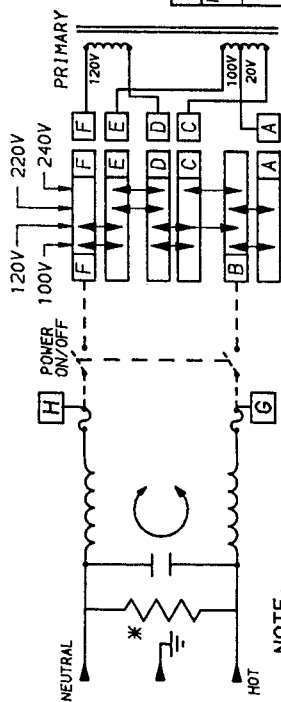
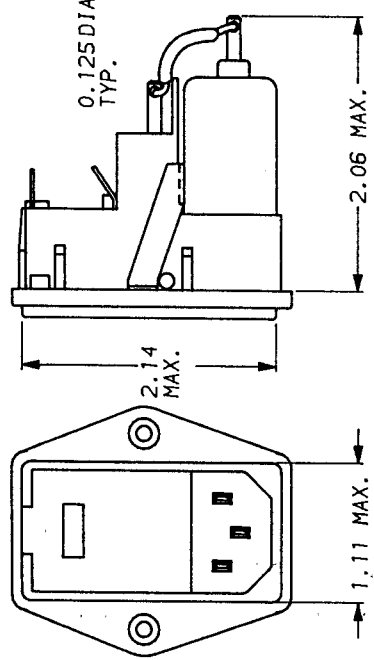
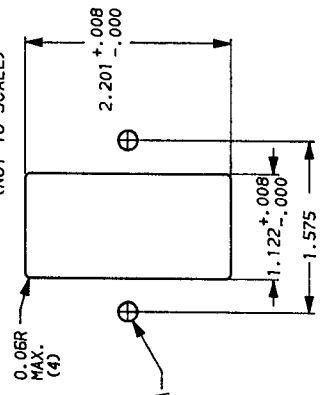
SCALE	DATE	DRG. NO.	REV.
NTS	8-31-90		6EHL4M.02
DRW. BY	CFW	CFW	

FREQUENCY MHz	3	8	13	15	16	18	18	30
COMMON	0.05	0.15	0.50	1.0	2.0	5.0	10	30
DIFF. dB	3	8	13	15	16	18	18	18
DIFF. dB	1	4	14	20	25	32	38	42

50Ω - 50n (MINIMUM) INSERTION LOSS
 This document is proprietary to CORCOM INC. and is not to be reproduced nor used for manufacturing purposes except on CORCOM's order or prior written consent.



RECOMMENDED PANEL CUTOUT
 (NOT TO SCALE)



NOTE:
 1.) 6EHL4M CONNECT JUMPER OR SWITCH FROM POINT H TO F AND FROM G TO B.
 *RESISTOR ADDED TO PRODUCT BUILT AFTER 3-30-92 (9212).



POWER LINE FILTER