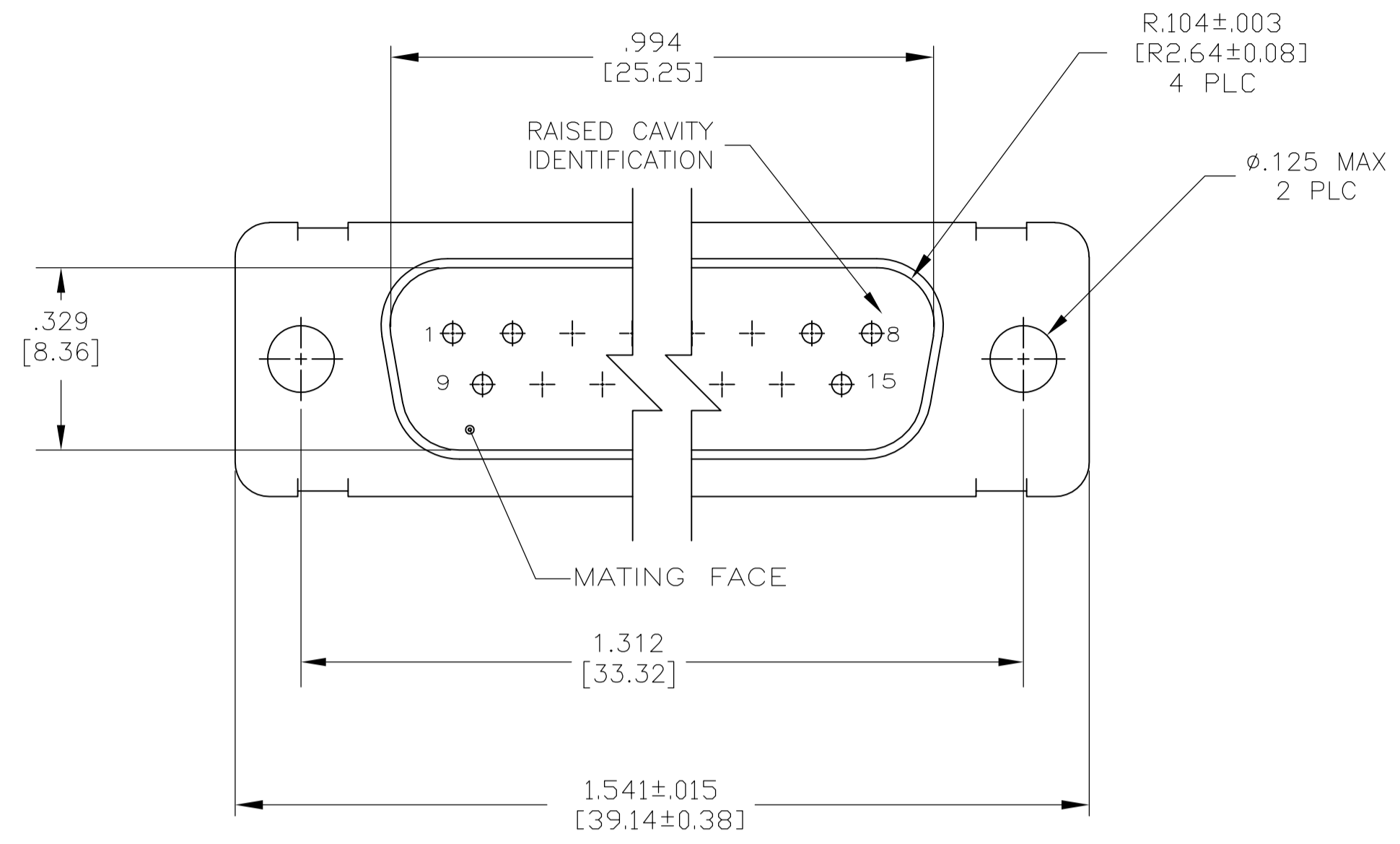
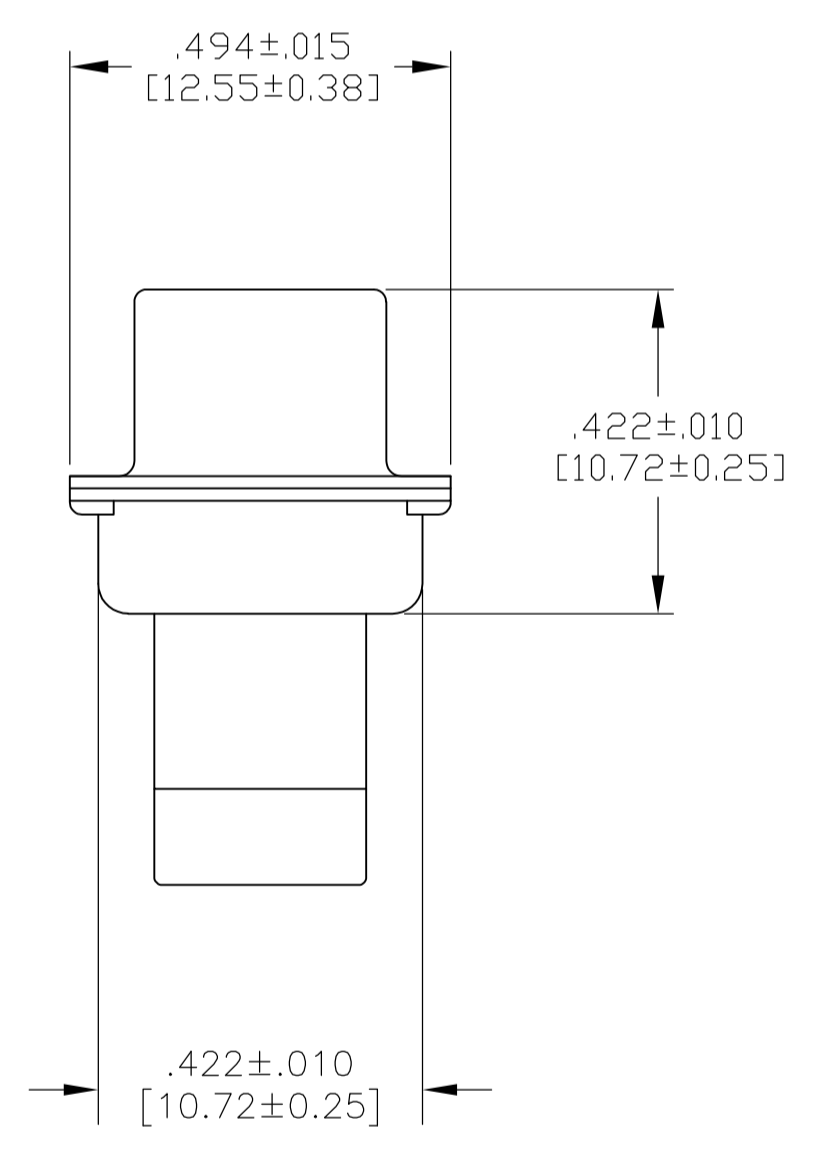
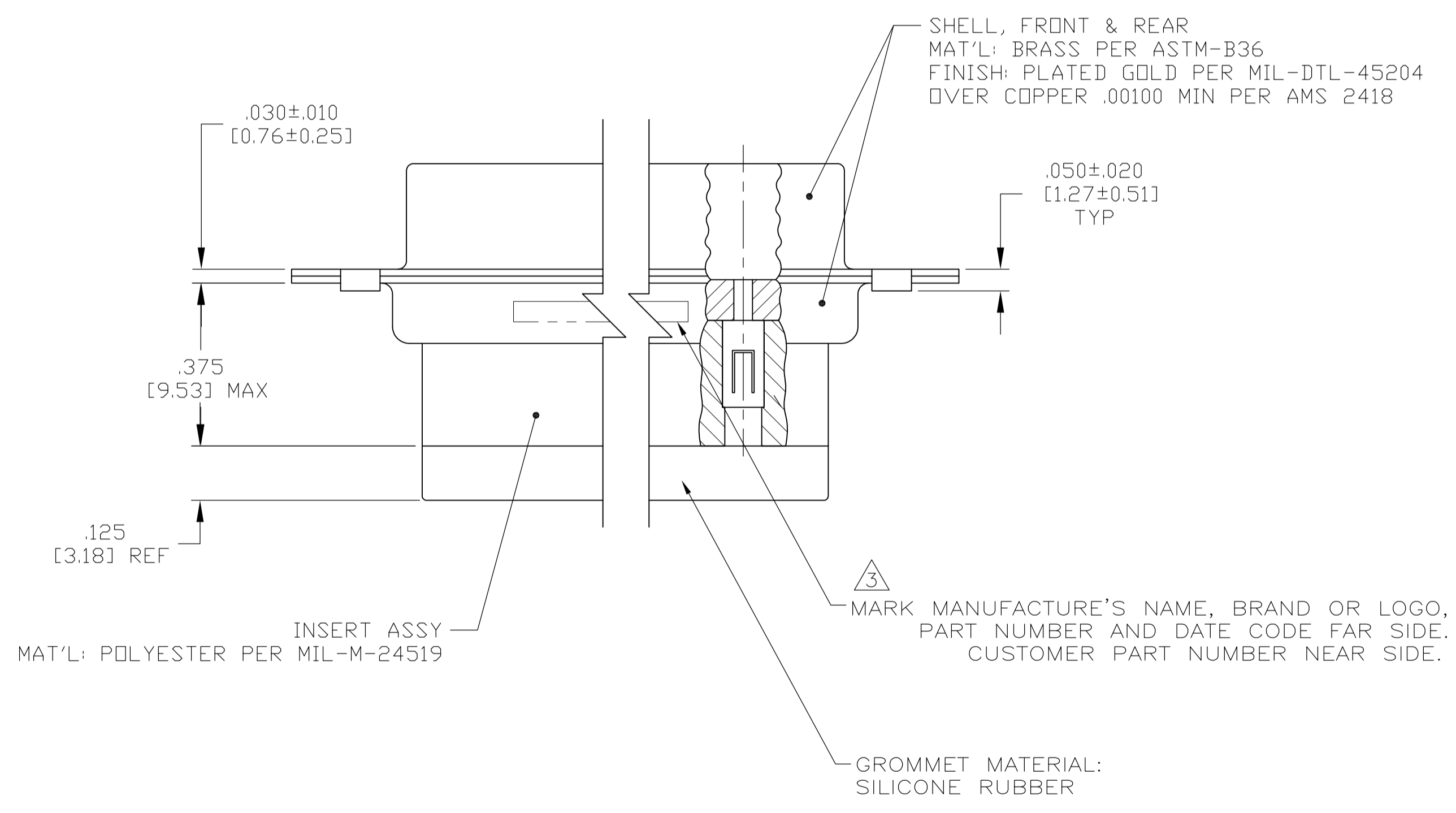


LOC		DIST		REVISIONS			
P	LTR	DESCRIPTION	DATE	DNW	APVD		
G		REV PER ECO 12-016000	18SEP12	RM	RL		



1. THIS CONNECTOR ASSEMBLY IS SUPPLIED WITH Be Cu CONTACT RETENTION CLIPS INSTALLED IN THE INSERT ASSEMBLY.
 2. THIS CONNECTOR ASSEMBLY MATES WITH ANY PLUG CONNECTOR WITH THE SAME INSERT ARRANGEMENT AND DIMENSIONAL REQUIREMENTS PER MIL-C-24308.
 3. MARKED WITH .047 [1.19]-.062 [1.57] HIGH CHARACTERS. FAR SIDE REFERS TO THE WIDE SIDE OF THE KEYSTONE. NEAR SIDE REFERS TO THE NARROW SIDE OF THE KEYSTONE.
 4. MAXIMUM WIRE INSULATION TO BE USED WITH THIS CONNECTOR ASSEMBLY IS .068 [1.73] DIAMETER.
5. SPECIAL REQUIREMENTS PER BOEING 1A01 DOCUMENT.
6. BUILT TO ORDER, NO INVENTORY OF THIS PART NUMBER IS TO BE KEPT. SINGLE LOT DATE CODE REQUIRED.



REMARKS	CUSTOMER MARKING	PART NUMBER
6 7	1A01-027PHW	1-211639-1
--	---	211639-4
6 7	1A01-027PHA	211639-1

DIMENSIONS:		TOLERANCES UNLESS OTHERWISE SPECIFIED:		APPROVED:		DATE:	
INCHES [mm]		0 PLC	± .005	DRN	P. YEAGER	13FEB09	
		1 PLC	± .005	CHK	R. LEASE	13FEB09	
		2 PLC	± .005	APP'D	R. LEASE	13FEB09	
		3 PLC	± .005 [0.13]	NAME			
		4 PLC	± .005	PRODUCT SPEC			
		ANGLES	± .005	APPLICATION SPEC			
MATERIAL				SIZE	CAGE CODE	DRAWING NO	RESTRICTED TO
				WEIGHT			
				A1 00779 C=211639			
				CUSTOMER DRAWING	SCALE	SHEET	REV
					4:1	1 OF 1	G