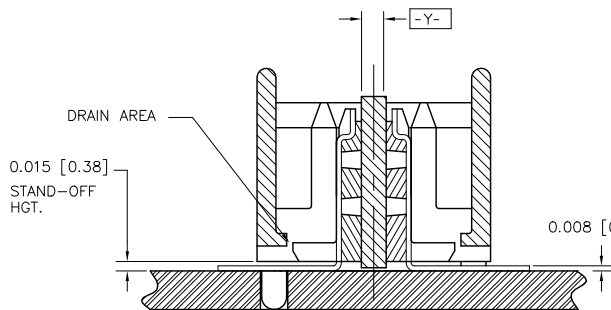
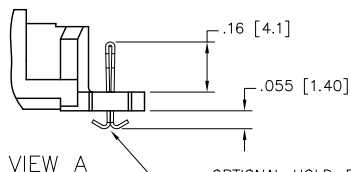
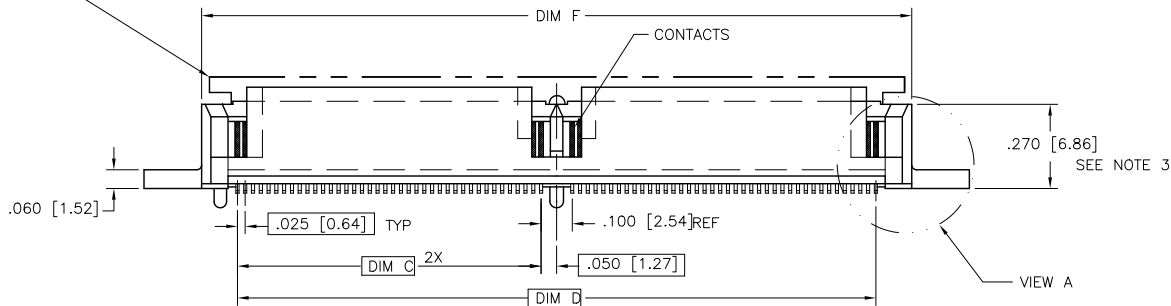
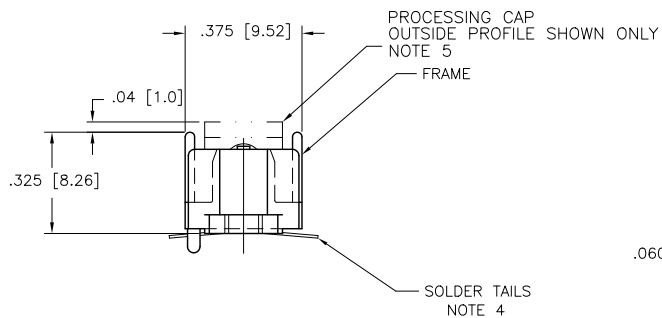
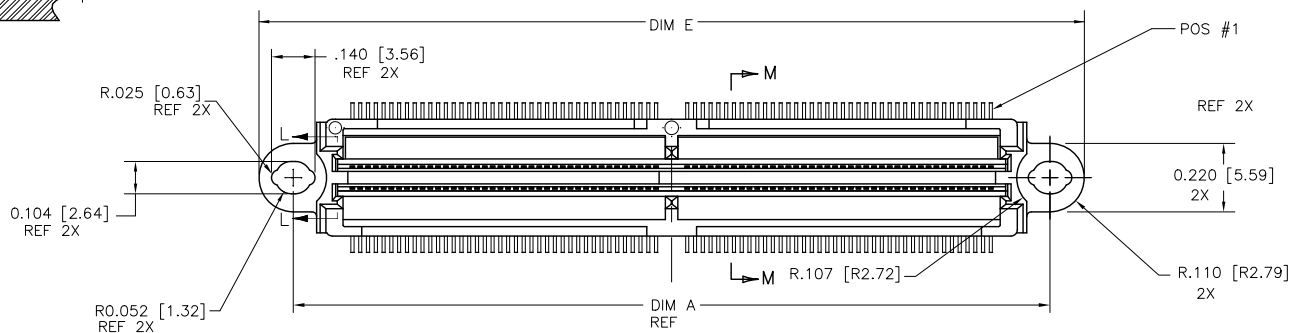
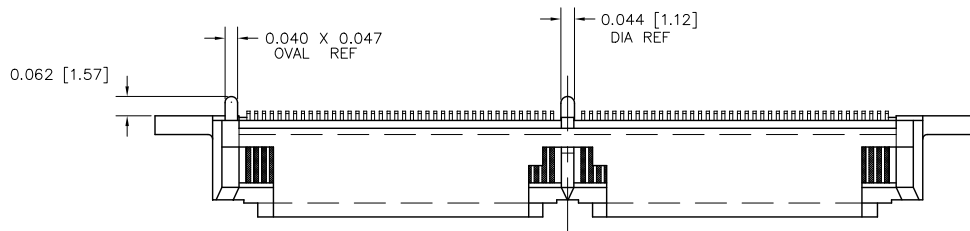


PRODUCT NUMBER

SEE TABLE



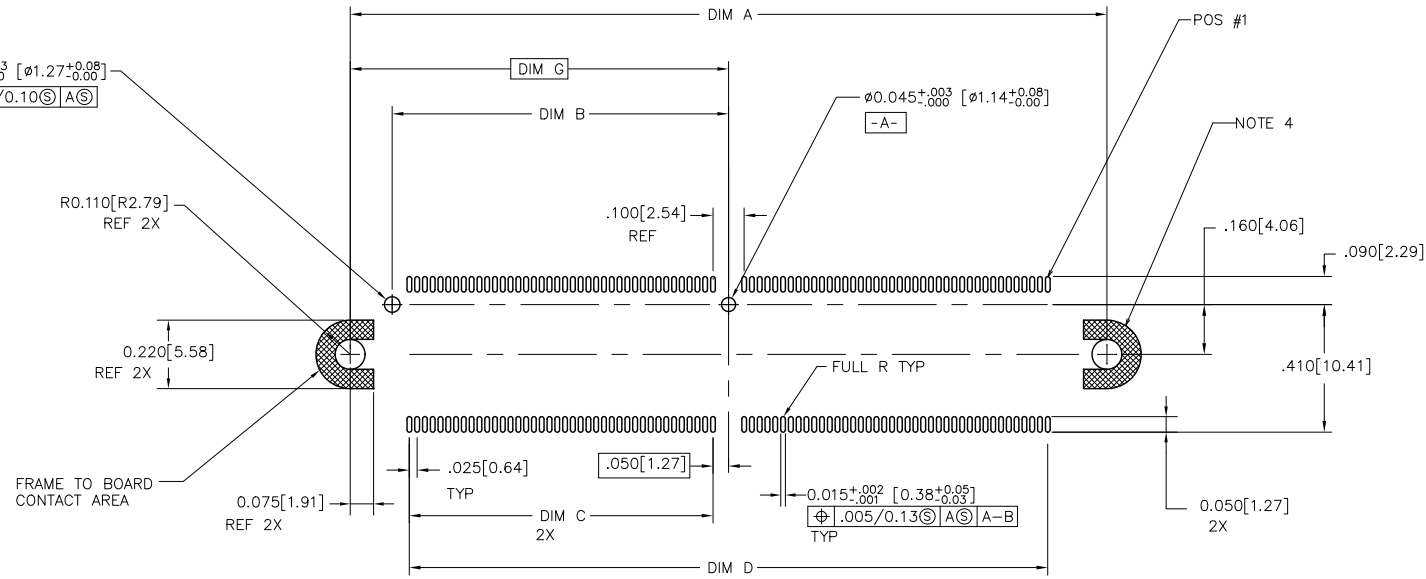
SECTION M-M
ROTATED COUNTERCLOCKWISE 90°
SCALE 10/1



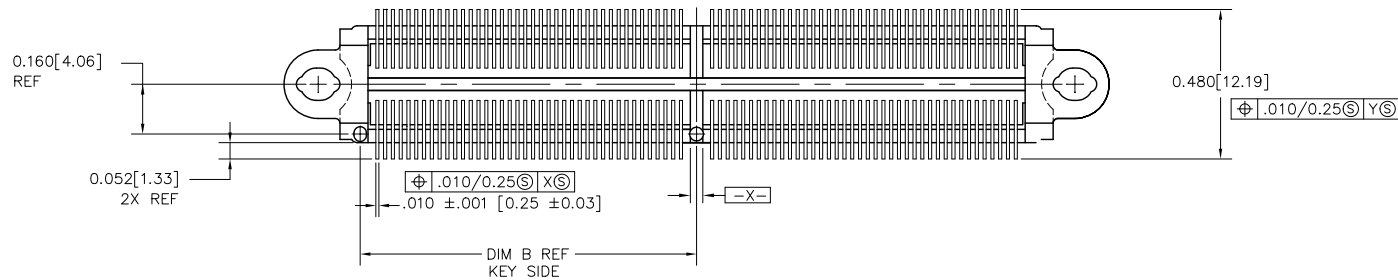
VIEW A
OPTIONAL HOLD-DOWN (BOTH ENDS) FOR
Ø .096±.003 [2.45±.08] PCB HOLE 2X
SEE NOTE 6

mat'l. code		surface		tolerance		projection		product family	
-		ISO 1302 ✓		ISO 406 ISO 1101				MICROPAX	
tolerances unless otherwise specified		angles		linear		INCH/MM		title	
ltr	ecn no	dr	date					MICROPAX .025M SMT PLUG DOUBLE MODULE	
H	v51287	MRC	10/20/95					dwg no	
J	E70095	SAR	7/22/97					sheet 1 of 3	
K	v01503	CGD	6/12/00	0°±2'				size	
L	v12115	CRG	8/17/01	dr	T. HOUTZ	3/04/93		A3	
M	M05-0082	MHT	5/06/05	engr	M. HAHN	3/04/93		91294	
N	M06-0279	AEA	7/22/06	chr	M. HAHN	3/04/93		type	
P	ELX-N-011340	YO	4/18/12	appd	M. HAHN	3/04/93		Product Customer Drawing	
sheet	revision	P	P	P					
index	sheet	1	2	3					

PRODUCT NUMBER
SEE TABLE



PROPOSED TERMINATION REQUIREMENTS



BOTTOM VIEW

mat'l. code -		surface ISO 1302 ✓		tolerance ISO 406 ISO 1101		projection INCH/MM		product family MICROPAX	
ltr		ecn no dr date		tolerances unless otherwise specified		scale 1:1		title	
P				angles linear .XX±.01/0.3 .xxx±.005/0.13 .xxxx±.0020/0.051				MICROPAX .025M SMT PLUG DOUBLE MODULE	
				dr T. HOUTZ 3/04/93		FCI		dwg no 91294 sheet 2 of 3 size A3	
				enr M. HAHN 3/04/93				type Product Customer Drawing	
				chr M. HAHN 3/04/93					
				appd M. HAHN 3/04/93					

sheet index	revision sheet																			
-------------	----------------	--	--	--	--	--	--	--	--	--	--	--	--	--	--	--	--	--	--	--

PRODUCT	NO. OF CONTACTS	DIM A	DIM B	DIM C	DIM D	DIM E	DIM F	DIM G	CONTACT PLATING NOTE 2	HOLD-DOWN	PROCESSING CAP
91294-001	120	1.930/50.95	.830/21.08	.725/18.42	1.550/39.37	2.150/54.61	1.790/45.47	.965/24.51	30 GXT	OPTIONAL SEE NOTE 6	CAPS INSTALLED ON CONNECTOR
-002	160	2.430/61.72	1.080/27.43	.975/24.76	2.050/52.07	2.650/67.31	2.290/58.16	1.215/30.86	30 GXT		
-003	200	2.930/74.42	1.330/33.78	1.225/31.12	2.550/64.77	3.150/80.01	2.790/70.87	1.465/37.21	30 GXT		
-033	200	2.930/74.42	1.330/33.78	1.225/31.12	2.550/64.77	3.150/80.01	2.790/70.87	1.465/37.21	30 GXT		
91294-413	200	2.930/74.42	1.330/33.78	1.225/31.12	2.550/64.77	3.150/80.01	2.790/70.87	1.465/37.21	60 GXT		NOT SHIPPED ON CONNECTOR CAPS SUPPLIED LOOSE PIECE

LEAD FREE OPTION:

PRODUCT	NO. OF CONTACTS	DIM A	DIM B	DIM C	DIM D	DIM E	DIM F	DIM G	CONTACT PLATING NOTE 2	HOLD-DOWN	PROCESSING CAP
91294-001LF	120	1.930/50.95	.830/21.08	.725/18.42	1.550/39.37	2.150/54.61	1.790/45.47	.965/24.51	30 GXT	OPTIONAL SEE NOTE 6	CAPS INSTALLED ON CONNECTOR
-002LF	160	2.430/61.72	1.080/27.43	.975/24.76	2.050/52.07	2.650/67.31	2.290/58.16	1.215/30.86	30 GXT		
-003LF	200	2.930/74.42	1.330/33.78	1.225/31.12	2.550/64.77	3.150/80.01	2.790/70.87	1.465/37.21	30 GXT		
-033LF	200	2.930/74.42	1.330/33.78	1.225/31.12	2.550/64.77	3.150/80.01	2.790/70.87	1.465/37.21	30 GXT		
91294-413LF	200	2.930/74.42	1.330/33.78	1.225/31.12	2.550/64.77	3.150/80.01	2.790/70.87	1.465/37.21	60 GXT		NOT SHIPPED ON CONNECTOR CAPS SUPPLIED LOOSE PIECE

NOTES:

- MATERIALS:
DIELECTRIC: LCP
CONTACTS: PHOS BRONZE
FRAME: ZINC ALLOY #3
- PLATING:
SOLDER TAILS: 150 u"/3.81um Sn-Pb
FRAME: 100u "/2.54um NICKEL
CONTACTS: 30u"/0.76um GXT OVER 50u"/1.27um Ni
OR 60u"/1.52um GXT OVER 75u"/1.90um Ni.
LEAD FREE OPTION:
SOLDER TAILS: 150 u"/3.81um Sn
FRAME: 100u "/2.54um NICKEL
CONTACTS: 30u"/0.76um GXT OVER 50u"/1.27um Ni
OR 60u"/1.52um GXT OVER 75u"/1.90um Ni.
- WHEN CONNECTOR IS MATED WITH OPPOSITE HALF, THE PARALLEL BD. TO BD. HGT. IS 0.47 ±0.01. (APPLYS TO VERT. THRU & SURFACE MT. STYLES)
- THE SOLDER TAILS ON THIS PRODUCT ARE DESIGNED TO BE COMPLIANT IN ORDER TO ACCOMMODATE PRINTED CIRCUIT BOARD DIMENSIONAL VARIATIONS. THEREFORE, HOLDDOWN HARDWARE IS REQUIRED TO SECURE THE CONNECTOR TO THE PRINTED CIRCUIT BOARD FOR MOST TYPES OF SOLDER REFLOW OPERATIONS. FOR FURTHER APPLICATION DATA, INCLUDING HOLE SIZES FOR VARIOUS TYPES OF HARDWARE, SEE TA-932.
- DO NOT REMOVE PROCESSING CAP UNTIL SOLDERING IS COMPLETED.
- BY ADDING LETTER "H" TO TABULATED P/N, THE OPTIONAL HOLD-DOWNS WILL BE SUPPLIED INTEGRAL W/CONNECTOR. EXAMPLE: XXXXX-XXXH (HOLD-DOWN)
- PART NUMBERS WITH LF SUFFIX AT THE END ARE LEAD FREE.
- THE HOUSING WILL WITHSTAND EXPOSURE TO 260°C PEAK TEMPERATURE FOR 20 SECONDS IN A CONVECTION, INFRA-RED OR VAPOR PHASE REFLOW OVEN.
- IF "LF" P/N THE PRODUCT MEETS EUROPEAN UNION DIRECTIVES AND OTHER COUNTRY REGULATION AS DESCRIBED IN GS-22-008.
- PRODUCT SPECIFICATION PER BUS-12-105.

mat'l. code		surface		tolerance		projection		product family	
-		ISO 1302 ✓		ISO 406 ISO 1101				MICROPAX	
ltr	ecn	no	dr	date		tolerances unless otherwise specified		title	
P						angles linear .XX±.01/0.3 .xxx±.005/0.13 0'±2' .xxx±.0020/0.051		MICROPAX .025M SMT PLUG DOUBLE MODULE	
						scale 1:1		sheet 3 of 3 size	
								91294 A3	
								type Product Customer Drawing	
sheet index	revision sheet								