

TESTERS



WOODHEAD® TESTERS PERFORM BASIC-VERIFICATION AND MULTI-FUNCTION WIRE TESTING WITH COMPACT, SIMPLE-TO-USE DEVICES THAT ARE A MUST FOR ANY TOOLBOX

Woodhead testers are small devices with testing abilities that include reverse polarity, open-ground, open-neutral, open-hot, hot-and-ground-reversed, hot-on-neutral, hot-unwired, Ground Fault Circuit Interrupter (GFCI) functional and receptacle tension.

FEATURES AND BENEFITS

Plug-in design	Enables a quick-read; go versus no-go indication
NEOTEX® rubber construction	Optimum resistance to the affects of heat, cold, abrasion and chemicals
Wide variety of tooling capabilities	Provides customer convenience

APPLICATIONS

- Electrical contractors
- Inspection tools
- Service tools

Woodhead® Receptacle Circuit Tester



Features and Benefits

- Unique, industry-leading, NEoTEX® Paracril OZO Rubber exterior yields the best performance for abrasion, chemical exposure and temperature extremes
- Compact tester with three neon indicating lights to check for correct wiring; reversed polarity, open ground, open neutral, open hot, hot and ground reversed and hot on neutral/hot unwired
- Select the 1751 Tester to check for proper GFCI operation to assure proper operation for GFCI required circuits

Reference Information

UL File No.: E38751
CSA File No.: LR22103



Physical

Receptacle Tester Housing: NEoTEX Paracril OZO rubber
Receptacle Tester Plug Blades: Brass, Nickel-plated
Receptacle Tester Insert: Nylon

Environmental

Rating: Industrial duty

Test/Control

F

GFCI Test	Woodhead No.	Order No.
Yes	1751	130127-0003

Woodhead® Receptacle Tension Tester



Features and Benefits

- Through a simple tool insertion into a standard, straight blade receptacle, one can measure the spring contact tension or holding potential on the plug blades (below 4 ounces a replacement is recommended, between 4-10 ounces indicates a receptacle to be monitored) NFPA Standard 99-1996 Ref. 3-3.3.3.3(d)
- Tester works with the following NEMA Types; 1-15, 5-15, 5-20, so one needs to carry just one tool.
- Receptacle contacts are monitored independently for complete assurance of compliance and trouble-free power system operation
- The completely insulated housing allows testing to be performed on live circuits to allow continued, uninterrupted power service
- Impact-resistant housing and carrying case provide tester protection and an exceptional service life

Physical

Tester Housing: Impact resistant plastic
Tension Tester Plug Blades: Stainless Steel

Environmental

Rating: Industrial duty

Woodhead No.	Order No.
1760	130127-0007

Technical Information

Test and Control

Assembly Instructions

Pushbutton Stations

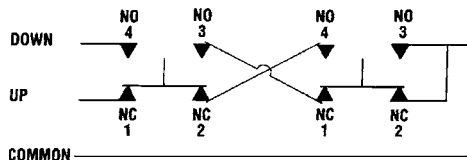
Wiring of Switches

When a set of two pushbuttons is used to control complementary functions such as Up-Down, Open-Close, Left-Right, etc., the two buttons should be wired as shown in the diagram below to provide an electrical interlock. This electrical interlock method of wiring provides two primary benefits:

- It prevents the simultaneous operation of both functions, thus protecting equipment from damage.
- If a pushbutton switch should fail, depressing the complementary button opens the control circuit, thus providing an emergency stop.

The switches supplied with this station are rated at currents substantially higher than those normally encountered in control applications. It should be noted, however, that electrical failures in associated equipment can cause currents to flow which far exceed even these high ratings.

Single-Speed Interlock Applications

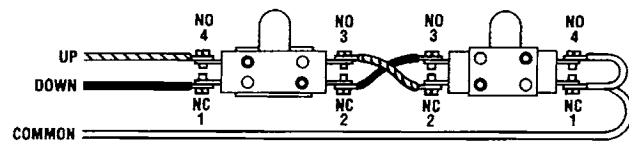


Circuit Schematic for Two Single Switches Wired for Interlock
(Note: NO = Normally Open; NC = Normally Closed)

Two-Speed Interlock Applications

Super-Safeway Pendant Station, 402X and 4032 Series, Two-Speed Contact Ratings			Volts	AC Current	Horsepower
<p>FREE POSITION</p>	<p>FIRST MAKE</p>	<p>SECOND MAKE</p>	125	10	1/3 HP, 125V AC
Circuit Schematic			250	10	1/2 HP, 250V AC

4052 Pushbutton Station Switch Characteristics



Legends for 402X and 4032 Series Pushbutton Stations

Legend			Series	Woodhead Numbers	Order No.
Bridge	Left	Right	4020	71-4220	130203-1295
Crane	Low	Raise			
Close	Magnet	South			
Down	North	Stop			
Door	No. 1	Start			
East	No. 2	Slow			
Fwd	No. 3	Trolley			
Fast	On	Up			
High	Open	West			
Hoist	Off	Blank(2)			
In	Out				
Lower	Rev				

Note: Switches are UL Listed.

Legends for 505X Series Pushbutton Stations

Legend			Series	Woodhead Numbers	Order No.
OFF	IN	SOUTH	505X	505BC-L	130126-0009
UP	RAISE	WEST			
LEFT	START	CLOSE			
FWD	ON	OUT			
NORTH	DOWN	LOWER			
EAST	RIGHT	STOP			
OPEN	REV				

Technical Information

Test and Control

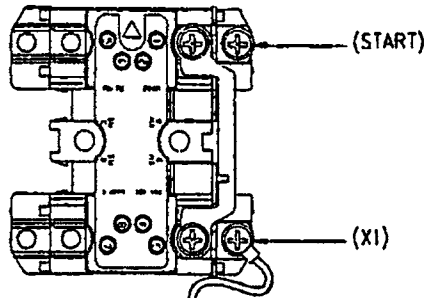
Wiring and Marking Information

Test/Control

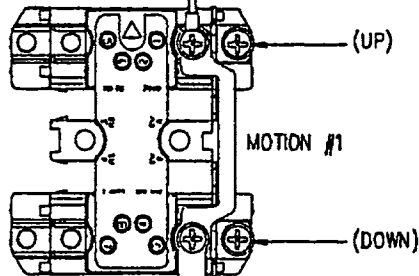
F

TYPICAL 5050 SERIES WIRING AND MARKING INFORMATION

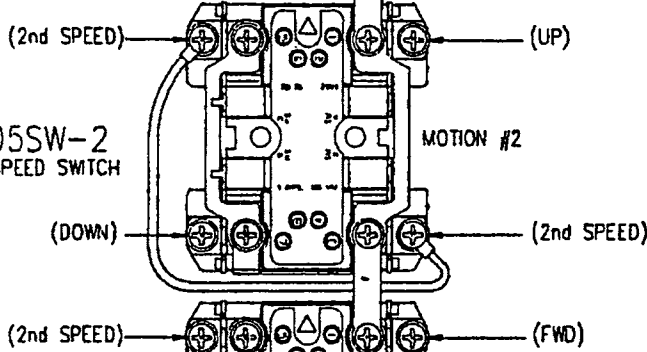
505SW-M
MOMENTARY ON/OFF SWITCH



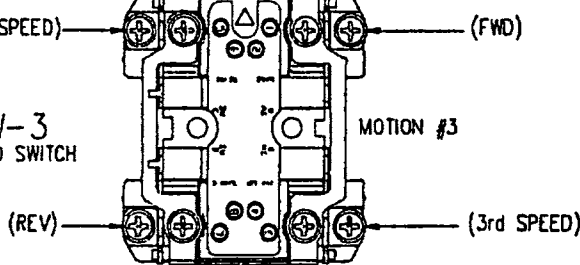
505SW-1
SINGLE SPEED SWITCH



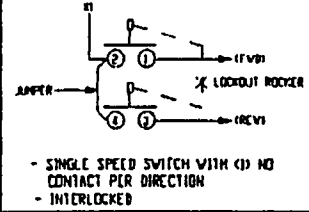
505SW-2
TWO SPEED SWITCH



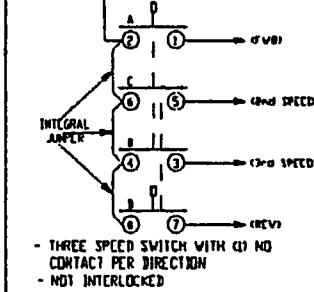
505SW-3
THREE SPEED SWITCH



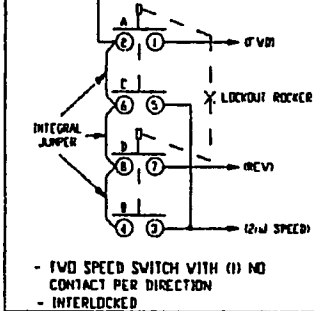
505SV-1



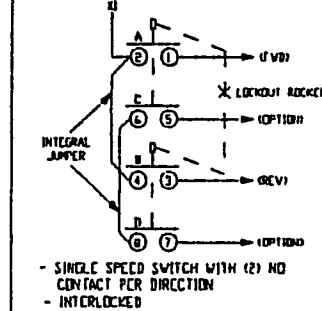
505SW-3



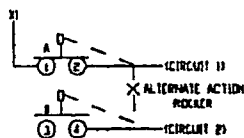
505SW-2



505SW-12ND

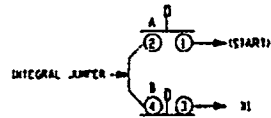


505SW-N12ND



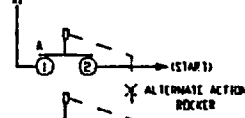
- MAINTAINED (START/STOP) SWITCH WITH (1) NO CONTACT PER POLE
- INTERLOCKED

505SW-M



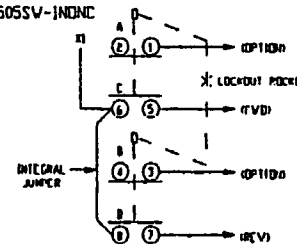
- MOMENTARY (START/STOP) SWITCH WITH (1) NO CONTACT & (1) NO CONTACT
- NOT INTERLOCKED

505SW-N



- MAINTAINED (START/STOP) SWITCH WITH (1) CONTACT
- INTERLOCKED

505SW-12ND



- SINGLE SPEED SWITCH WITH (1) NO & (1) NO CONTACT PER DIRECTION
- INTERLOCKED