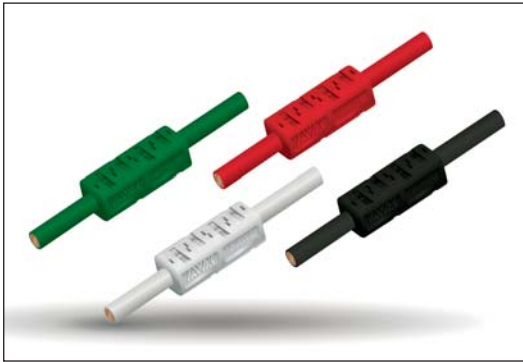


Thru Wire Connector 16AWG: WTW

9286-300



Poke-Home wire-to-wire connectors have been proven to be very simple and reliable over the past several years. Until today, they have been focused on the light industrial wire gauge ranges of 18AWG to 24AWG.

The latest product has just been developed to address the heavier 12AWG to 18AWG applications and will begin rolling out starting with the 16AWG-18AWG product in a single (one wire) version. This new 300 series of connectors employs a single, phosphor bronze contact technology with a center wire stop. Accepting both solid and stranded wires, pre-stripped wires can be easily inserted and then twist and pulled to be removed.

APPLICATIONS

- Industrial Machine Controls: motors, drives, solenoids, pumps, coils or transformers
- Commercial Building: controls, security and fire
- Smart Grid: meters, breakers and panels
- SSL: fixtures and wiring
- Application notes: refer to 201-01-218

FEATURES AND BENEFITS

- Simple strip and poke-home wire insertion with twist and pull wire extraction
- One-Piece contact with high force contact beams provide mechanical stability and wire retention
- Integral wires stop prevents over insertion
- Initial -316 product will accept both 16AWG and 18AWG solid and stranded wires

ELECTRICAL

- Current Rating: 16/18AWG 10 Amps
- Voltage Rating: 600 V

ENVIRONMENTAL

- Operating Temperature: -40°C to +105°C

MECHANICAL

- Contact Material: Phosphor Bronze
- Plating: Pure Tin Over Nickel
- Durability: 5 Cycles

HOW TO ORDER

00

Prefix

00 = Standard Product

9286

Series

001

No. of Ways

001 = 1

3XX

Wire Size*

316 = 16AWG/1.3 – 1.6mm²
18AWG/0.8 – 1.0mm²

X

Housing Color

CODE	HOUSING COLOR	UL APPROVAL
9	White/Natural	Pending
8	Black	Pending
2	Brown	Pending
3	Blue	Pending
4	Yellow	Pending
5	Red	Pending
6	Green	Pending
7	Orange	Pending

06

Plating Option

06 = Lead-Free Tin
All Over

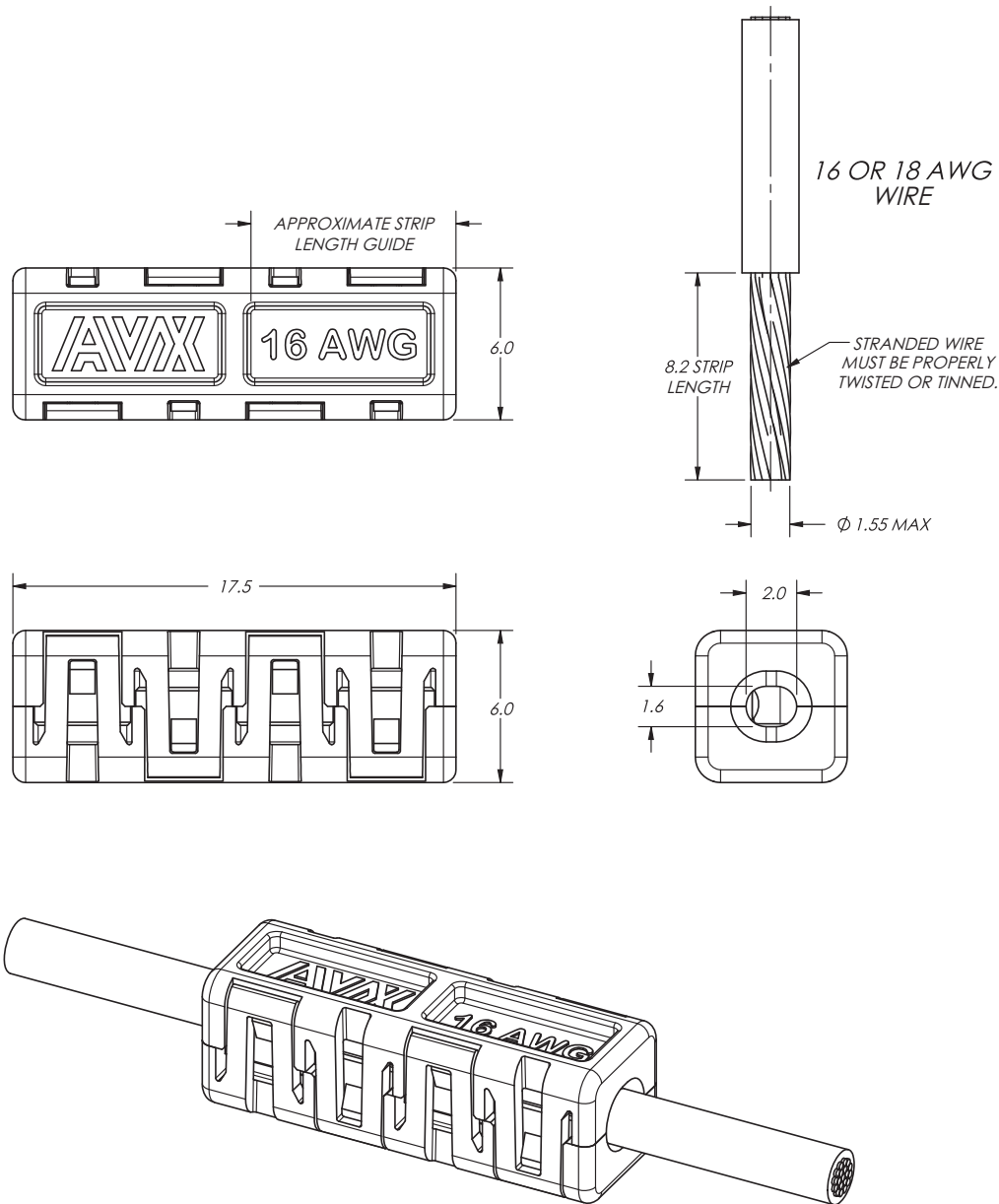
*Solid or Standed wire accepted:
more than 19 strands per wire not recommended.

Certification: UL File #E90723

Thru Wire Connector 16AWG: WTW

9286-300

00-9286-001-316-X06



PACKAGING TO BE IN BULK: 500 PER BAG.