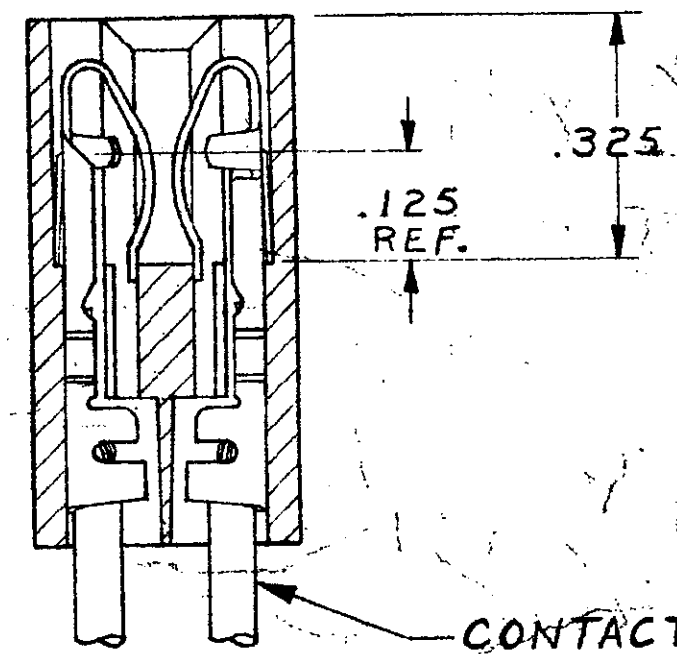
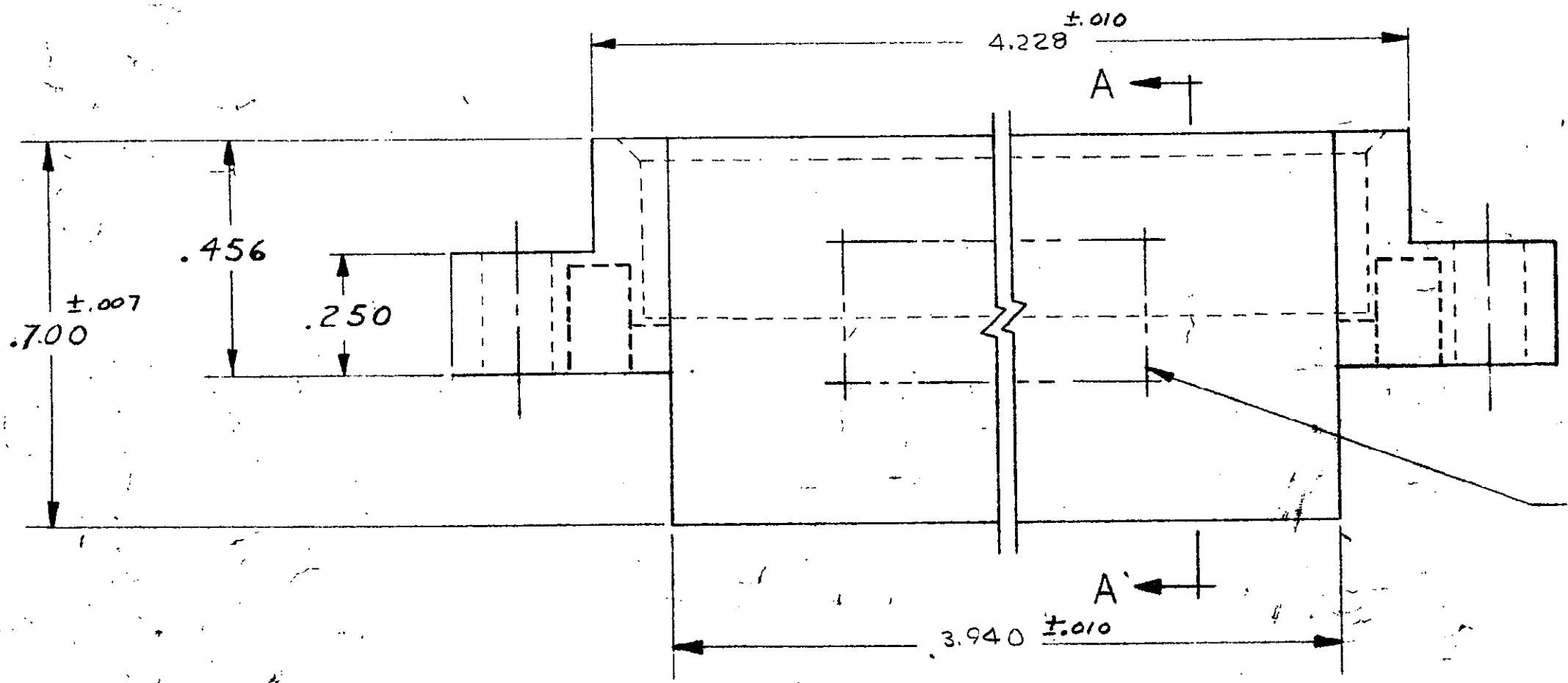
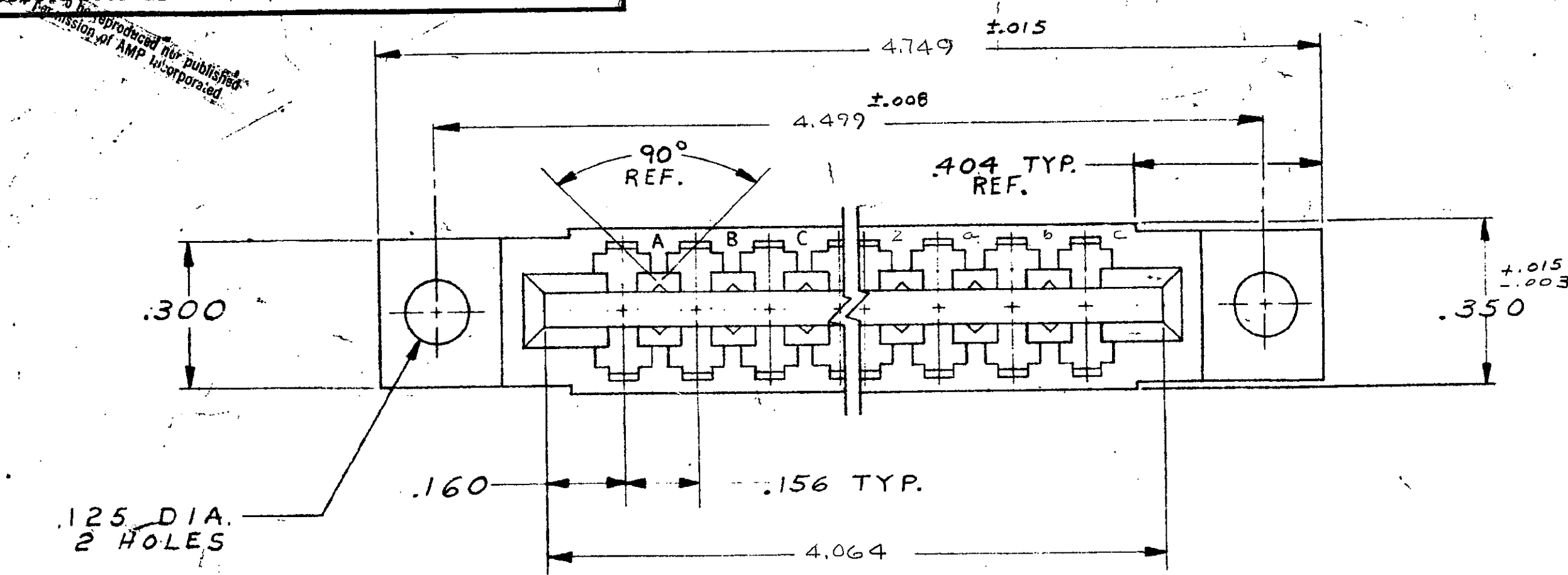


DRAWING MADE IN AMERICAN PROJECTION

ALL RIGHTS RESERVED. AMP  
 FROM THE PATENTS AND OR PATENTS PENDING.

REVISIONS				
ZONE	LTR	DESCRIPTION	DATE	APPROVED
A		REVISED MAT'L 4657	DR 1-9-76	DR
B		REV PER ADO70Z	5/14/85	CP/...
C		REV PER AD 3180	1189	W/HWR
D		REV PER 0010-0337-95	10-17-95	P.B./
E		REV PER EC 0320-349-97	25 NOV 97	NS

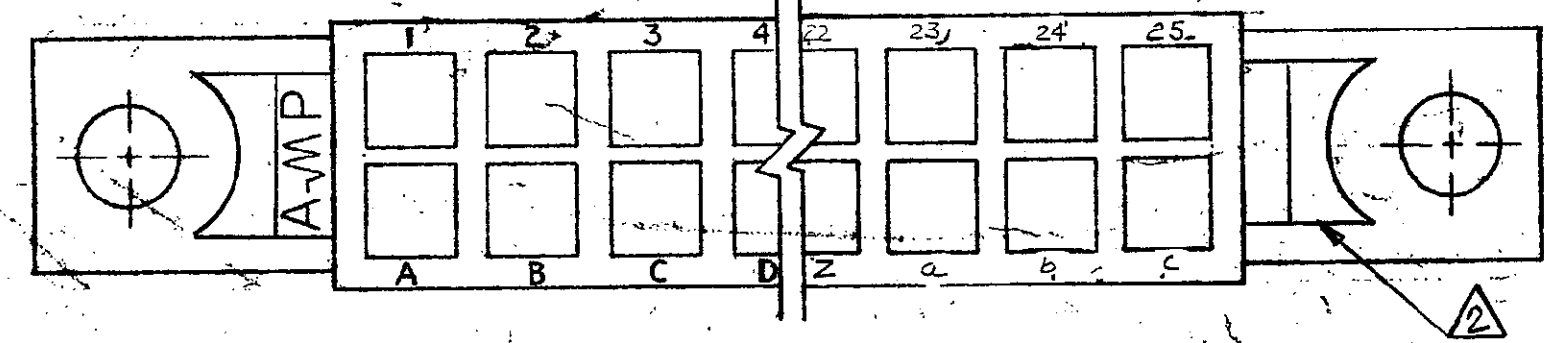
583726-1 I. AS SHOWN



AMP, PART NO. &  
 DATE CODE HOT STAMPED  
 IN THIS APPROX. AREA.  
 PER 115-9009

CONTACTS SHOWN  
 FOR REF. ONLY.

SECT. A-A



1. .055-.070 P.C. BOARD THICKNESS.  
 2. VOID CORING PERMISSIBLE AT AMP'S OPTION REF. ONLY

UNLESS OTHERWISE SPECIFIED, DIMENSIONS ARE IN INCHES TOLERANCES ON: DECIMALS ± .005 ANGLES ±	CONTRACT NO.	AMP INCORPORATED HARRISBURG, PENNSYLVANIA	
	MATERIAL GLASS FILLED NYLON OR POLYESTER COLOR: BLACK	DR Gunkle 5-3-71	NAME HOUSING, AMP LEAF 2.5 POSITION, DUAL
	CHK S.S. Heide 5/4/71	APPD Kaufman 5/4/71	SIZE C
	REL R. Shouran 5-5-71	DSGN APPD	CODE IDENT NO. 00779
	OTHER APPD	NUMBER 583726	SCALE 4-1
		SHEET 1 OF 1	