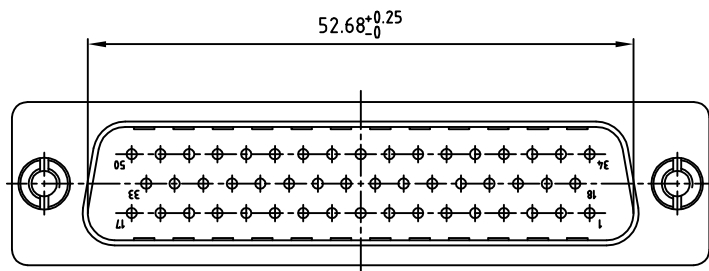
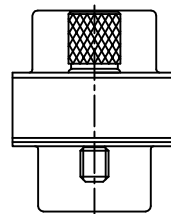
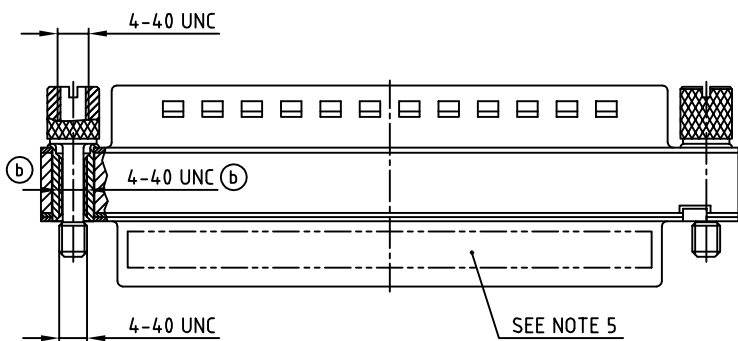
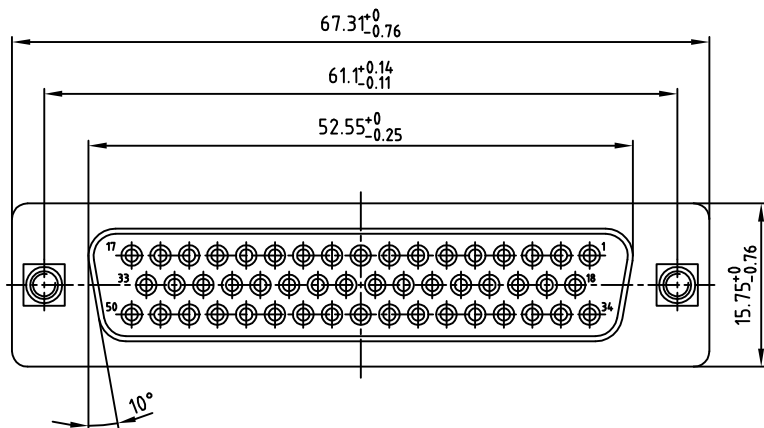
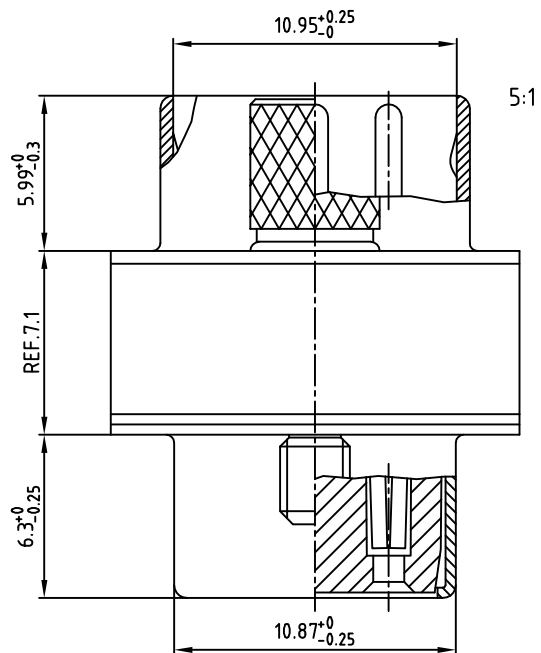


used for: D-SUB



NOTES:

1. METALSHELLS: STEEL; min. 320µ" TIN
2. INSULATORS: PBT GF UL 94 V-0, BLACK
3. CONTACTS: COPPER ALLOY
PLATING: 8µ" HARD GOLD OVER min. 50µ" NICKEL
4. MAXIMUM TORQUE VALUE FOR THREAD: 6" LBS
5. CONNECTOR IS PART MARKED: 163A50049X CONEC ABC

APPROVAL * FREIGABE * DEBLOCAGE * AUTORIZACION * APPROVAL	
CUSTOMER APPROVAL DATE:	
NAME:	TITLE:
COMPANY NAME:	
APPROVAL * FREIGABE * DEBLOCAGE * AUTORIZACION * APPROVAL	

THIS DRAWING MAY NOT BE COPIED OR REPRODUCED IN ANY WAY, AND MAY NOT BE PASSED ON TO A THIRD PARTY, WITHOUT WRITTEN PERMISSION.
OWNERSHIP AND COPYRIGHT OF CONEC Gmbh
DO NOT ALTER CAD DRAWING BY HAND

2 x b	Ä 2141	30.12.2004	Lehmen
rev.	description	date	name

tolerance		dim. in mm
2004	date	
drawn	28.12.	name Lehmenkühler
appd.	28.12.	Kühle
norm	DIN 41652	
d-old		

scale:	2:1 (5:1)	
material:	SEE NOTES	
title:	ADAPTER PLUG / SOCKET 50pos. 4-40 UNC	
dwg no:	AutoCAD 2004	DIN-A
	16K2A560	3
part no:	163A50049X	sh: 1/1