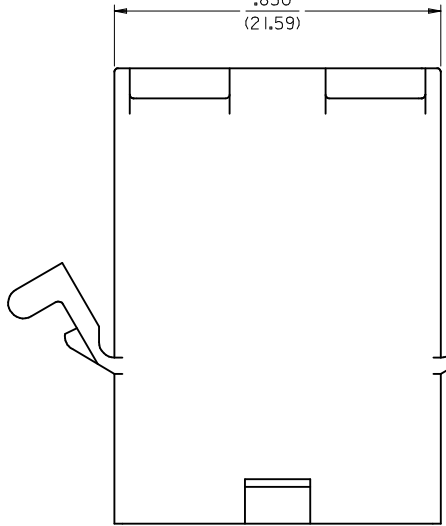


.215
(5.46) SQ, TYP

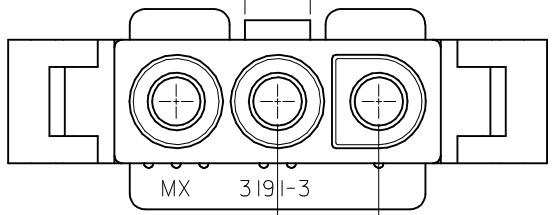
.850
(21.59)



OPTIONAL MOUNTING
EARS, 2 PL, SEE
DETAIL "A", SHT 3

.390
(9.91)

.170
(4.32)



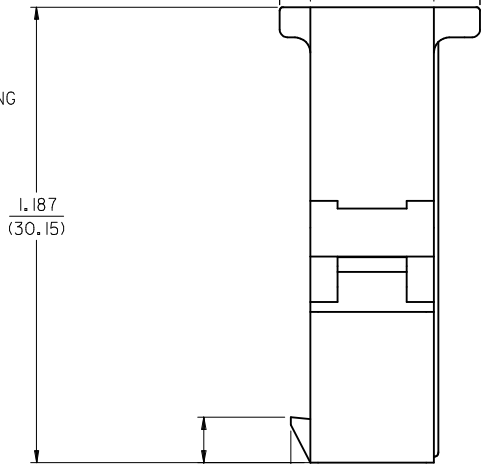
.264
(6.71)
TYP

.322
(8.18)

.080
(2.03)

.522
(13.26) REF

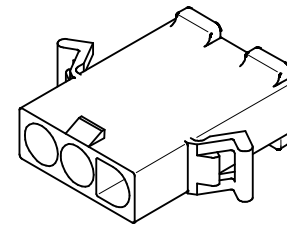
.120
(3.05)



1.187
(30.15)

.118±.005
(3.00±0.13)

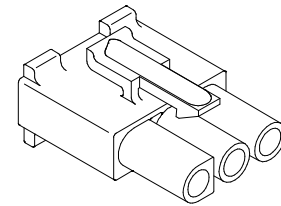
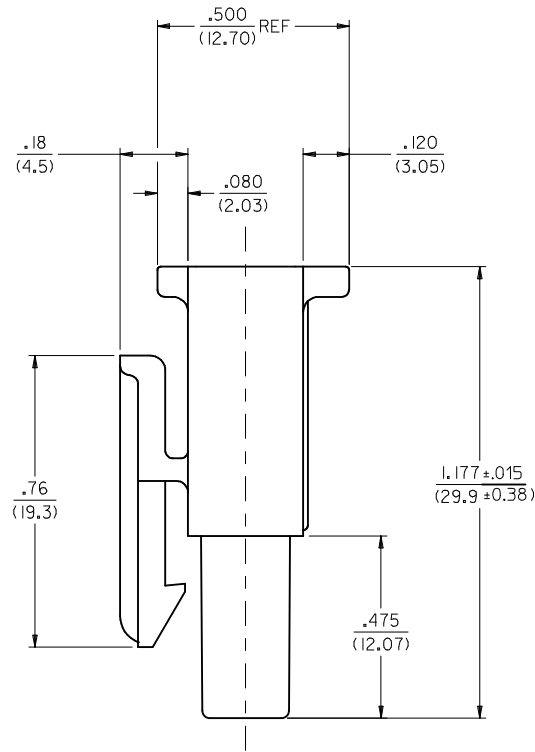
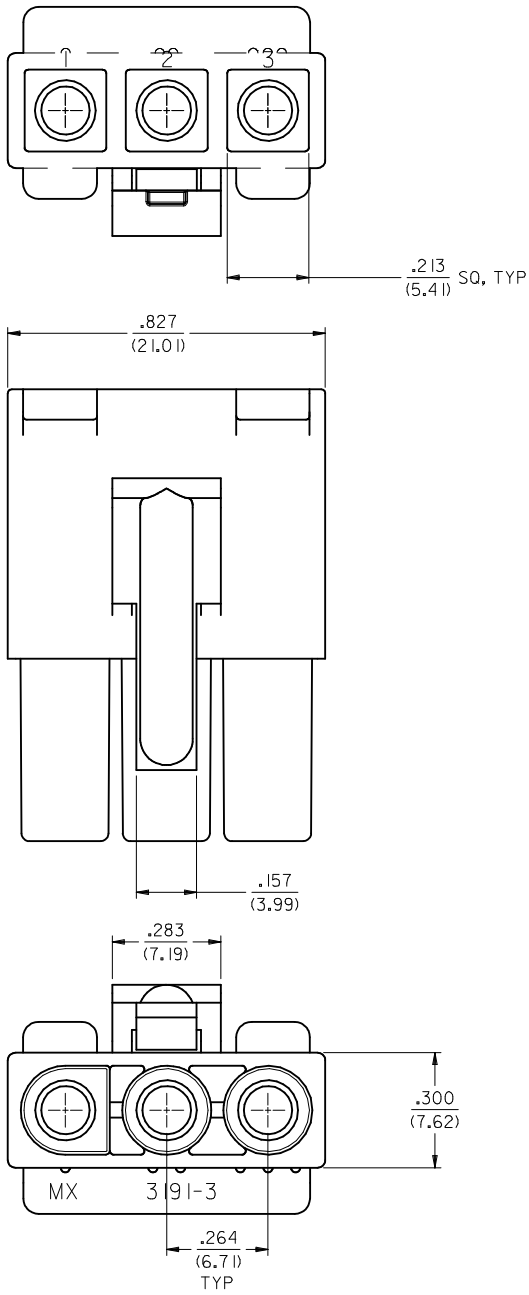
.051
(1.30)



PLUG

3	L2
2	L2
1	L2
SHT. REV.	

UPDATE REV. LEVELS EC NO: UCP2014-2106 DRW: AELHAG 2013/11/12 CHKD: JELL 2013/11/12 APPR: FSMITH 2013/11/13	QUALITY SYMBOLS ▽=0 ▽=0	GENERAL TOLERANCES (UNLESS SPECIFIED)		DIMENSION STYLE IN/MM	SCALE 4:1	DESIGN UNITS INCH	THIRD ANGLE PROJECTION
		4 PLACES ± --- ± --- 3 PLACES ± --- ± .010 2 PLACES ± 0.25 ± .015 1 PLACE ± 0.38 ± ---	DRAWN BY GWC	DATE 1996/01/08	TITLE .093/(2.36) HOUSING PLUG AND RECEPTACLE, 3 CKT .264/(6.71) CTRS.		
		ANGULAR ± 1/2°	CHECKED BY RW	DATE 1996/01/08	MOLEX INCORPORATED		
		DRAFT WHERE APPLICABLE MUST REMAIN WITHIN DIMENSIONS	APPROVED BY RAS	DATE 1996/01/08	MATERIAL NO. SEE CHART	DOCUMENT NO. SD-3191-3*	
L2	REV	SIZE C		THIS DRAWING CONTAINS INFORMATION THAT IS PROPRIETARY TO MOLEX INCORPORATED AND SHOULD NOT BE USED WITHOUT WRITTEN PERMISSION			



RECEPTACLE

REMOVE DIM. 28.75 EC NO: UCP2014-2106 DRW: AELHAG 2013/11/12 CHKD: JELL 2013/11/12 APPR: FSMITH 2013/11/13 L2	QUALITY SYMBOLS ▽=0 ▽=0	GENERAL TOLERANCES (UNLESS SPECIFIED)		DIMENSION STYLE IN/MM	SCALE 4:1	DESIGN UNITS INCH	THIRD ANGLE PROJECTION		
		4 PLACES ± --- ± --- 3 PLACES ± --- ± .010 2 PLACES ± 0.25 ± .015 1 PLACE ± 0.38 ± ---	mm INCH INCH mm	DRAWN BY GWC	DATE 1996/01/08	TITLE .093/(2.36) HOUSINGS, PLUG AND RECEPTACLE, 3 CKT .264/(6.71) CTRS.			
		ANGULAR ± 1/2°		CHECKED BY RW	DATE 1996/01/08	MOLEX INCORPORATED			
		DRAFT WHERE APPLICABLE MUST REMAIN WITHIN DIMENSIONS		APPROVED BY RAS	DATE 1996/01/08	MATERIAL NO. SEE CHART	DOCUMENT NO. SD-3191-3*	SHEET NO. 2 OF 3	

THIS DRAWING CONTAINS INFORMATION THAT IS PROPRIETARY TO MOLEX INCORPORATED AND SHOULD NOT BE USED WITHOUT WRITTEN PERMISSION

PLUG	
PART NO.	ENG. NO.
I9-09-2038	3191-3P
I9-09-2039	3191-3PI
I9-09-2037	3191-3P-201
I9-09-2036	3191-3PI-201
I9-09-1038	3191-3PIRD OBSOLETE
I9-09-3032	3191-3PRD OBSOLETE
I9-09-3033	3191-3PBU

RECEPTACLE	
PART NO.	ENG. NO.
I9-09-1039	3191-3RI
I9-09-1036	3191-3RI-201
I9-09-3030	3191-3RIRD OBSOLETE
I9-09-5039	3191-3RI-2

LEGEND

3191-3****-*

CIRCUIT SIZE

P = PLUG
R = RECEPTACLE

EARS: BLANK = WITH PREBENT EARS (PLUG ONLY)
I = WITHOUT EARS

NOTES:

1. MATERIAL: SEE LEGEND
2. FINISH: NONE
3. PRODUCT SPECIFICATION: PS-02-08
4. PACKAGING SPECIFICATION: PK-3191-001
5. PARTS CONFORM TO CLASS B REQUIREMENTS OF COSMETIC SPECIFICATION PS-45499-002.

COLOR:

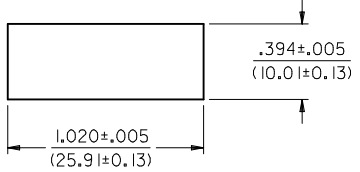
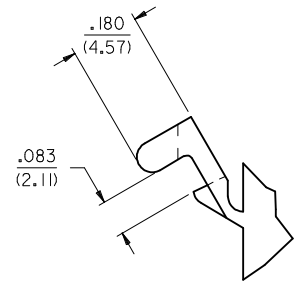
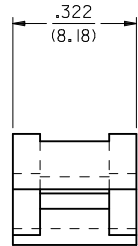
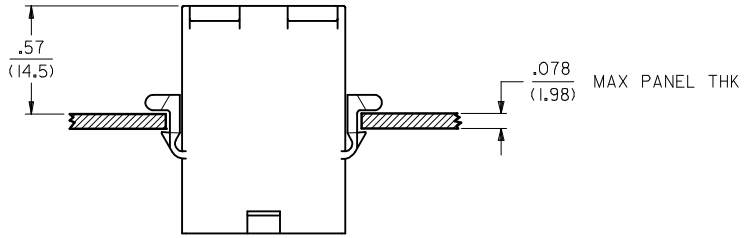
BLANK = NATURAL COLOR

AM=AMBER BK=BLACK BU=BLUE
BN=BROWN GY=GRAY GN=GREEN
OR=ORANGE RD=RED YW=YELLOW

COLORS AVAILABLE ONLY IN 94V-2 MATERIAL

MATERIAL:

BLANK=NYLON TYPE 6/6,94V-2
2 = NYLON TYPE PA66, 94V-0
201=NYLON TYPE 6/6, 94V-0



RECOMMENDED HOLE CUTOUT

DETAIL "A"

PREBENT MOUNTING EAR (SCALE 4:1)

UPDATE REV. LEVEL EC NO: UCP2014-2106 DRW:NAELHAG 2013/11/12 CHKD: APPR:FSMLTH 2013/11/13 REV:	QUALITY SYMBOLS	GENERAL TOLERANCES (UNLESS SPECIFIED) <table border="1"> <tr><th></th><th>mm</th><th>INCH</th></tr> <tr><td>4 PLACES ±</td><td>---</td><td>---</td></tr> <tr><td>3 PLACES ±</td><td>---</td><td>±.010</td></tr> <tr><td>2 PLACES ±</td><td>0.25</td><td>±.015</td></tr> <tr><td>1 PLACE ±</td><td>0.38</td><td>---</td></tr> </table>		mm	INCH	4 PLACES ±	---	---	3 PLACES ±	---	±.010	2 PLACES ±	0.25	±.015	1 PLACE ±	0.38	---	DIMENSION STYLE	SCALE	DESIGN UNITS	THIRD ANGLE PROJECTION
			mm	INCH																	
	4 PLACES ±	---	---																		
	3 PLACES ±	---	±.010																		
2 PLACES ±	0.25	±.015																			
1 PLACE ±	0.38	---																			
	IN/MM	2:1	INCH																		
		ANGULAR ±1/2°	DRAWN BY	DATE	TITLE																
			GWC	1996/01/08	.093/(2.36) HOUSINGS, PLUG AND RECEPTACLE, 3 CKT .264/(6.71) CTRS.																
			CHECKED BY	DATE	MATERIAL NO.																
			RW	1996/01/08	SEE CHART																
			APPROVED BY	DATE	DOCUMENT NO.																
			RAS	1996/01/08	SD-3191-3*																
			MATERIAL NO.		SHEET NO.																
			SEE CHART		3 OF 3																
			DRAFT WHERE APPLICABLE MUST REMAIN WITHIN DIMENSIONS				THIS DRAWING CONTAINS INFORMATION THAT IS PROPRIETARY TO MOLEX INCORPORATED AND SHOULD NOT BE USED WITHOUT WRITTEN PERMISSION														