

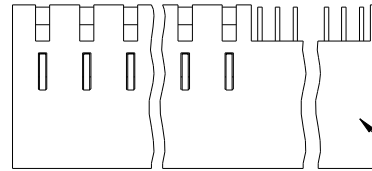
Tous droits strictement réservés. Reproduction ou communication à des tiers interdite, sous quelque forme que ce soit sans autorisation écrite du propriétaire. Propriété de c FCI. Droits de reproduction FCI.



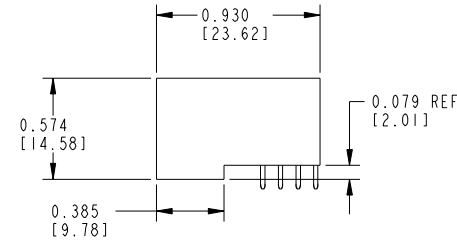
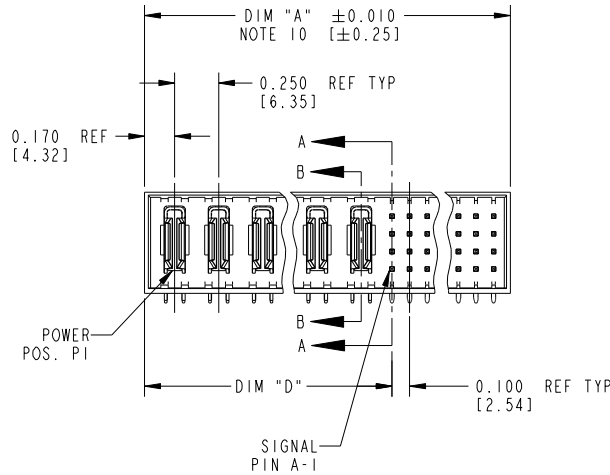
All rights strictly reserved. Reproduction or issue to third parties in any form whatever is not permitted without written authority from the proprietor. Property of FCI. Copyright FCI.

PRODUCT NUMBER
51726- ABBCCC00E0.. Note: ①
SEE NOTE 1

1 | 2 | | | | | | | | | | 3 | 4



SEE NOTE 9



mat'l code				NOTE 2		tolerances unless otherwise specified		CUSTOMER COPY		 www.fciconnect.com	
ltr	ecn no.	dr	date	linear	.XX±.01/.X±.3		projection			title	
K	DG05-0132	SJ	06/01/05		.XXX±.005/.XX±.13					RIGHT ANGLE HEADER w/o GUIDE PIN POWER / SIGNAL	
L	DG06-0011	CS	01/11/06	angles	.XXX±.0020/.XXX±.051				product family		
M	DG08-0239	JC	09/11/08		0°±2°				PWRLADE		
				dr	D.BOGLE 05-18-99		INCH / MM		code	213	
				enr	J. BROWN 05-18-99		scale		size	dwg no	
				chr	J. BROWN 05-18-99		1:1		51726		
				appd	J. BROWN 05-18-99		A		SHEET 1 OF 3		
sheet index	revision sheet	M	M	M							
		1	2	3							

form no. 7530-001-103

1 | 2

3 |

cage code 22526

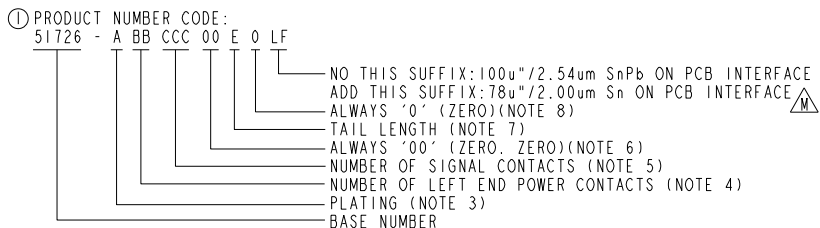
4

Tous droits strictement reserves. Reproduction ou communication a des tiers interdite, sous quelque forme que ce soit sans autorisation ecrite du propriétaire. Propriete de c FCI. Droits de reproduction FCI.

PRODUCT NUMBER
51726-ABBCC00E0- Note: ①
SEE NOTE 1

DIM	LENGTH FORMULAS (SEE NOTE 10)
DIM "A"	.250 [6.35] x BB + .100 [2.54] x (CCC/4) + .090 [2.29] (NOTE 10)
DIM "D"	.250 [6.35] x BB + .095 [2.41]
DIM "F"	.250 [6.35] x BB + .100 [2.54] x (CCC/4) + .120 [3.05]
DIM "G"	.250 [6.35] x BB - .025 [0.64]

CONNECTOR NOTES



- ⑧ BOARD RETENTION NOT AVAILABLE WITH GUIDELESS ENDS.
 - ⑨ MANUFACTURE'S NAME, P/N, AND DATE CODE TO APPEAR ON THIS SURFACE.
 - ⑩ THE MAXIMUM OVERALL LENGTH (DIM A) OF A PART IS 8.00 [203.2]
 - 11. PRODUCT SPECIFICATION GS-12-149
 - 12. REFERENCE 51697 FOR SPECIAL WORKSHEET
- PCB NOTES:
- 13. ALL DIMENSIONS ARE BASIC UNLESS OTHERWISE SPECIFIED.
 - 14. ALL THROUGH HOLES ARE LOCATED WITH A TRUE POSITION OF .004[0.10]
 - 15. ALL HOLE DIAMETERS ARE FINISHED HOLE SIZE.
 - 16. $\varnothing 0.0453 \pm .001$ [1.151 ± 0.02] DRILLED HOLES PLATED WITH 0.0003 [0.007] MIN SnPb OVER 0.001 [1.03] TO .003 [0.08] PLATING TO ACHIEVE A .040 \pm .003 [1.02 \pm 08] HOLE.
 - 17. A Δ SYMBOL WILL BE NEXT TO ANY DIMENSION, VIEW, OR NOTE WHICH HAS BEEN MODIFIED WITH THE CURRENT DRAWING REVISION.

- ② HOUSING MATERIAL: GLASS FILLED V-O HIGH TEMP THERMO PLASTIC.
SIGNAL CONTACT MATERIAL: PHOS BRONZE
POWER CONTACT MATERIAL: COPPER ALLOY
- ③ PLATING OPTION:
 Δ M = SEE PRINT 10064183 FOR PLATING SPEC OF 51726-IBBCC00E0; 51726-IBBCC00E0LF
- ④ THIS PART IS NOT AVAILABLE WITH RIGHT SIDE POWER CONTACTS.
- ⑤ SIGNAL CONTACTS, 004 TO 148 AVAILABLE.
- ⑥ LEFT END POWER CONTACTS, 01 TO 20 AVAILABLE.
MAXIMUM OF 20 POWER CONTACTS PER CONNECTER
- ⑦ TAIL LENGTH:
A = .135 [3.43] SOLDER TO BOARD



All rights strictly reserved. Reproduction or issue to third parties in any form whatever is not permitted without written authority from the proprietor. Property of FCI. Copyright FCI.

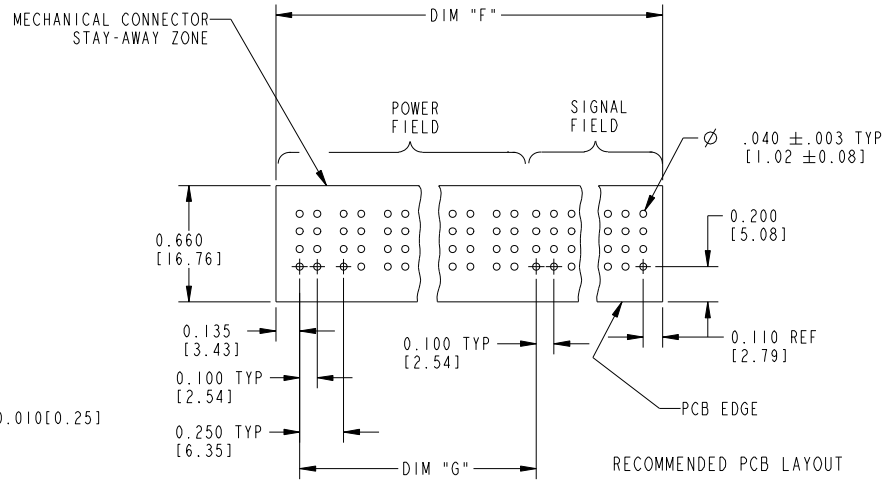
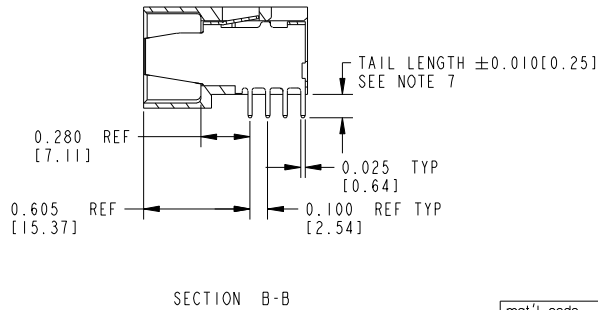
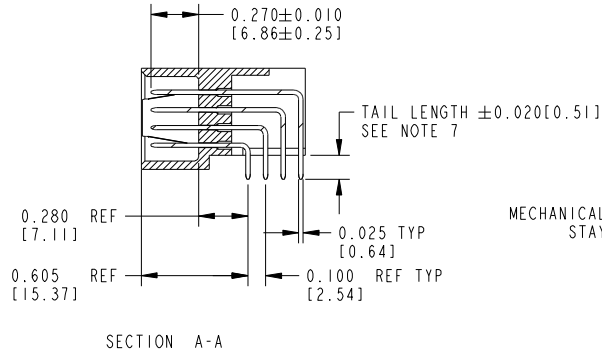
mat'l code				tolerances unless otherwise specified		CUSTOMER COPY		FCI www.fciconnect.com	
ltr	ecr no.	dr	date	linear	.XX \pm .01/.X \pm .3	projection	title	RIGHT ANGLE HEADER w/o GUIDE PIN POWER / SIGNAL	
M					.XXX \pm .005/.XX \pm .13			INCH / MM	product family
				angles	.XXX \pm .0020/.XX \pm .051	scale	size		
				dr	0 $^{\circ}$ \pm 2 $^{\circ}$			1:1	A
				enrg	D.BOGLE 05-18-99				
				chr	J. BROWN 05-18-99				
				appd	J. BROWN 05-18-99				
sheet index	revision sheet								

form no. 7530-001-103

cage code 22526

Tous droits strictement réservés. Reproduction ou communication à des tiers interdite, sous quelque forme que ce soit sans autorisation écrite du propriétaire. Propriété de c.FCI. Droits de reproduction FCI.

PRODUCT NUMBER
 51726 - ABBCCC00E0__
 Note: ①
 SEE NOTE 1



All rights strictly reserved. Reproduction or issue to third parties in any form whatever is not permitted without written authority from the proprietor. Property of FCI. Copyright FCI.

mat'l code				tolerances unless otherwise specified		CUSTOMER COPY		www.fciconnect.com			
ltr	ecn no.	dr	date	linear	.XX±.01/.X±.3	projection		title			
M					.XXX±.005/.XX±.13			RIGHT ANGLE HEADER w/o GUIDE PIN		POWER / SIGNAL	
					.XXX±.0020/.XX±.051						
				angles	0° ± 2°	INCH / MM		product family			
				dr	D.BOGLE 05-18-99	A		PWRLADE			
				enr	J. BROWN 05-18-99	scale		code			
				chr	J. BROWN 05-18-99	1:1		213			
				appd	J. BROWN 05-18-99			SHEET			
sheet index		revision sheet						3			

form no. 7530-001-103

cage code 22526