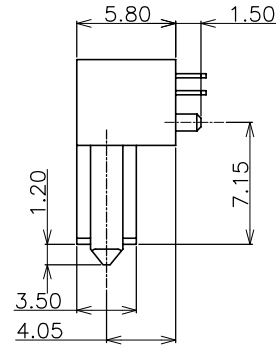
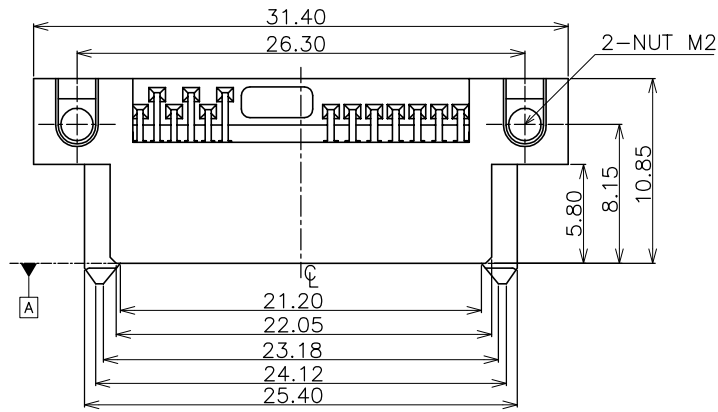
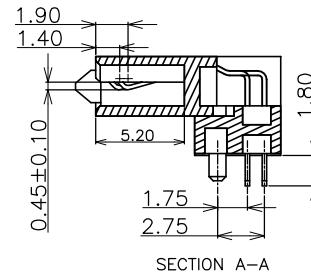
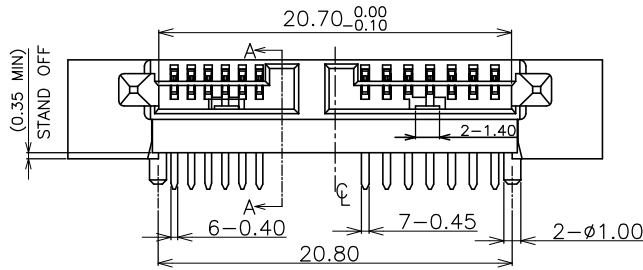
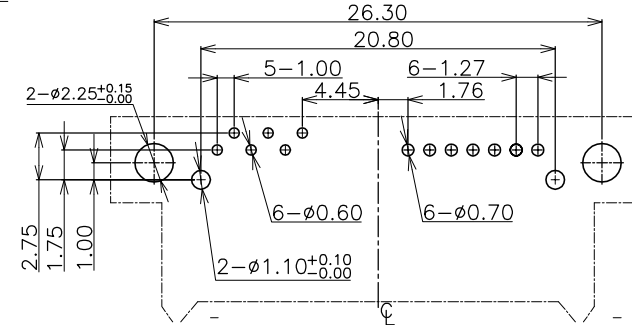


REVISION RECORD		
REV	DESCRIPTION	DRFT

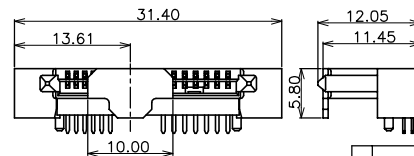
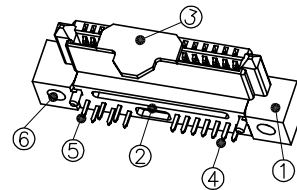


RECOMMENDED PCB LAYOUT



NOTES:

- 1.MATERIAL
  - 1.1 HOUSING: LCP UL94 V-0, BLACK
  - 1.2 TERMINALS: BRASS, T=0.25±0.01
  - 1.3 CAP/BACK COVER:LCP,UL94V-0 ; BLACK
  - 1.4 FINISH:
    - 10u" MIN GOLD PLATING ON MATING AREA.
    - 100~200u" MIN MATTE TIN PLATING ON SOLDER AREA.
    - AND 50u" MIN NICKEL UNDERPLATING ALL OVER.
    - NUT: 80u" MIN ZINC PLATING ON THE NUT
- 2.MECHANICAL CHARACTERISTICS
  - 2.1.MATING FORCE:45N MAX
  - 2.2.UNMATING FORCE:10N MIN
  - 2.3.DURABILITY:500 CYCLES
- 3.ELECTRICAL CHARACTERISTICS
  - 3.1 CURRENT RATING:1.5A
  - 3.2 CONTACT RESISTANCE:30mΩMAX
  - 3.3 INSULATION RESISTANCE:1000MΩMIN
  - 3.4 DIELECTRICAL WITHSTANDING 500V AC
- 4.ENVIRONMENT TEST
  - 4.1 TEMPERATURE RANGE:-55 C°TO +85 C°
- 5.PACKING:TAPE&REEL



CONNECTOR+CAP DRAWING  
SCALE: 1:2

NO	COMPONENT NAME	QTY	MATERIAL	PALTING
6	NUT	2	STEEL	SEE NOTE
5	6P TERMINAL	6	PHOSPHOR BROZNE	SEE NOTE
4	7P TERMINAL	7	PHOSPHOR BROZNE	SEE NOTE
3	CAP	1	LCP	
2	BACK COVER	1	LCP	
1	HOUSING	1	LCP	

TOLERANCES EXCEPT AS NOTED		DFTD Roy	DATE 11/20/2012		<b>RoHS Compliant</b>
MM	(INCH)	CHKD	DATE		
.0	± 0.30	APPVL	DATE		
.00	± 0.25	MATERIAL :		DRAWING NO. E9113-001-01 /PART NO. E9113-001-01	
.000	± 0.15	ANGLES: X.* ±1° X.X* ±0.5°	QTY :		
THIRD ANGLE PROJECTION		FINISH :	SCALE : 1:1	DO NOT SCALE DRAWING	
				SHEET 1 OF 1	