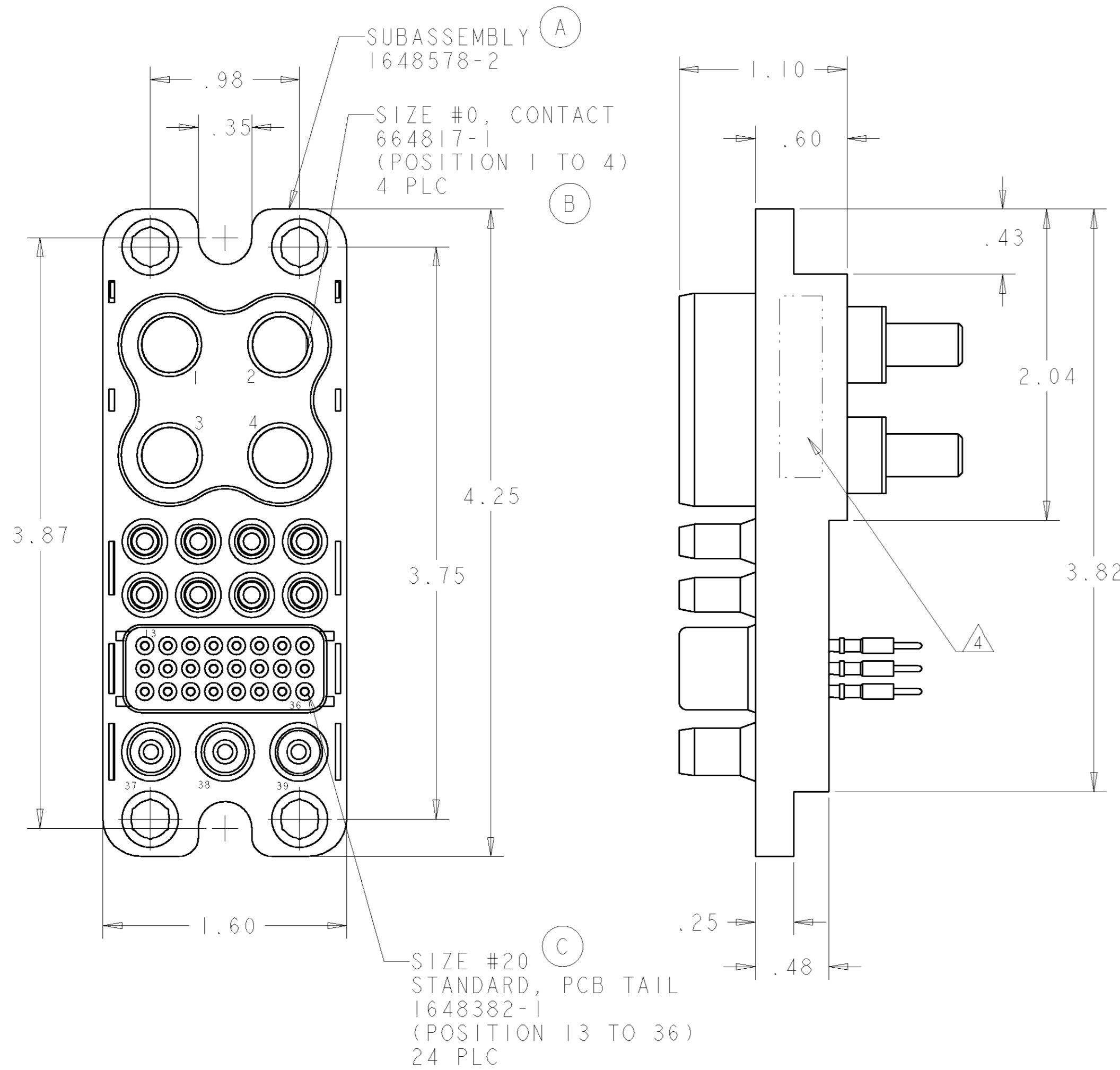


THIS DRAWING IS UNPUBLISHED. RELEASED FOR PUBLICATION 20  
 © COPYRIGHT 20 BY TYCO ELECTRONICS CORPORATION. ALL RIGHTS RESERVED.

LOC	DIST	REVISIONS					
GP	00	P	LTR	DESCRIPTION	DATE	DWN	APVD
		D		REV PER ECO-06-027267	05DEC2006	RG	DO



- PART NUMBER CHANGES AND OR DESIGN CHANGES AFFECTING THE INTERCHANGEABILITY REQUIRE PRIOR TYCO APPROVAL AND AUTHORIZATION BY REVISION TO THIS DRAWING.
  - MATERIAL:  
 INSULATOR: THERMOPLASTIC, GLASS REINFORCED, UL 94V-0  
 FLAMMABILITY RATED, COLOR: BLACK  
 PIN CONTACT: TELLURIUM COPPER ALLOY CI4500  
 RETENTION CLIP: BERYLLIUM COPPER
  - FINISH:  
 CONTACTS: SILVER PLATED .000200 MIN THK. OVER NICKEL .000040 MIN. THK. GOLD PLATE .000030 MIN. THK. OVER NICKEL .000040 MIN. THK.
- △ ITEMS PROVIDED TO THIS SPECIFICATION TO BE PERMANENTLY IDENTIFIED PER THE FOLLOWING IDENTIFIER:  
 TYCO PART NUMBER: XXXXXX-X  
 DATE CODE (e.g. 0216): YEAR WEEK  
 XXXX
- △ CRIMP CONTACTS (ITEM D) SHALL BE PACKAGED SEPARATELY AND PLACED IN THE BOX WITH THE CONN. ASSEMBLY.

△	D	3	6648318-1	CONTACT, SOCKET, #12, CRIMP, STD
	C	24	1648382-1	CONTACT, SOCKET, #20, PCB TAIL, STD
	B	4	6648417-1	CONTACT, SOCKET, #0, 1/4-20 EXT. THD.
	A	1	1648578-1	CONNECTOR, SOCKET, NO GUIDE PINS
	ITEM	-1	PART NUMBER	DESCRIPTION

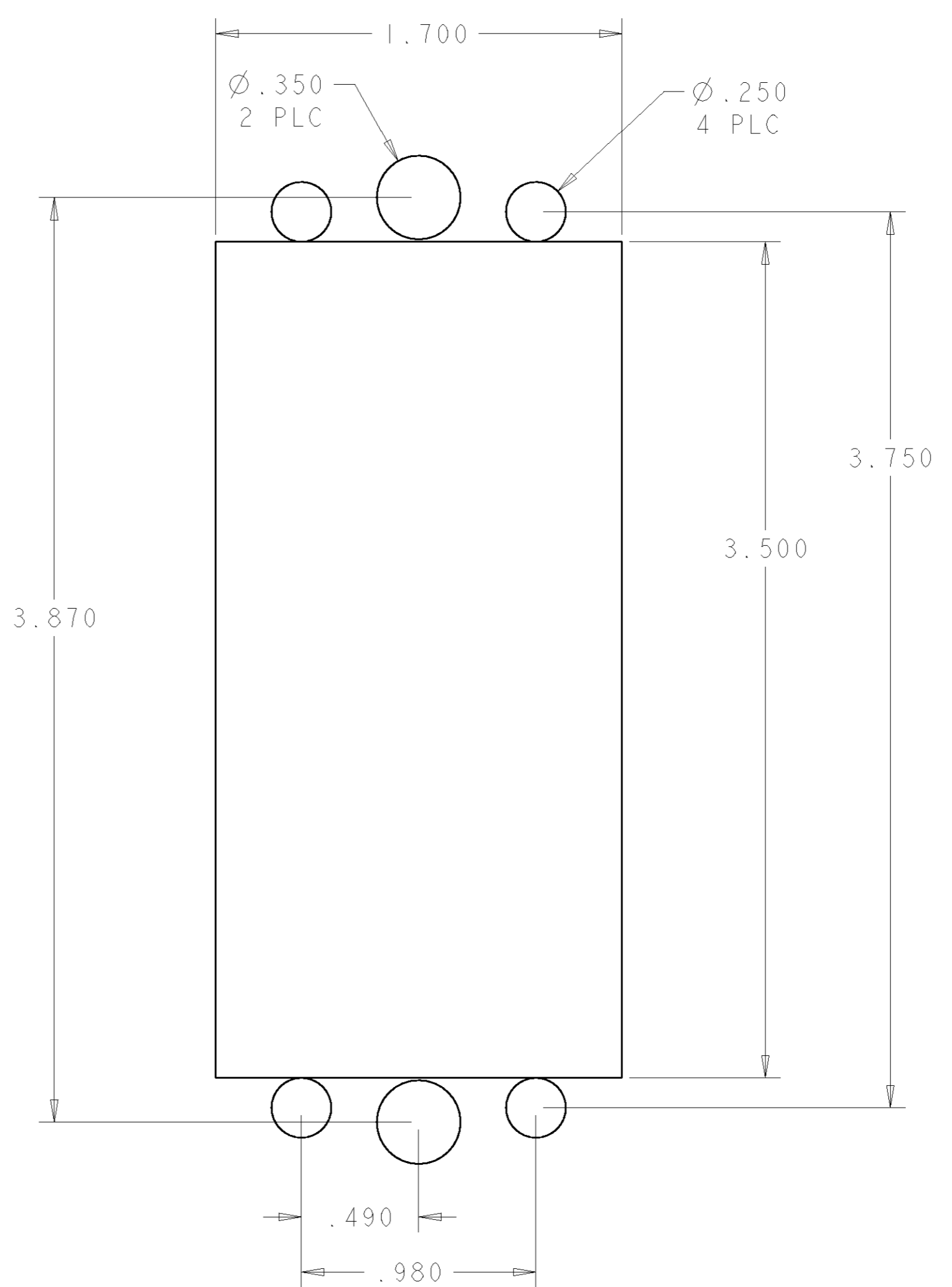
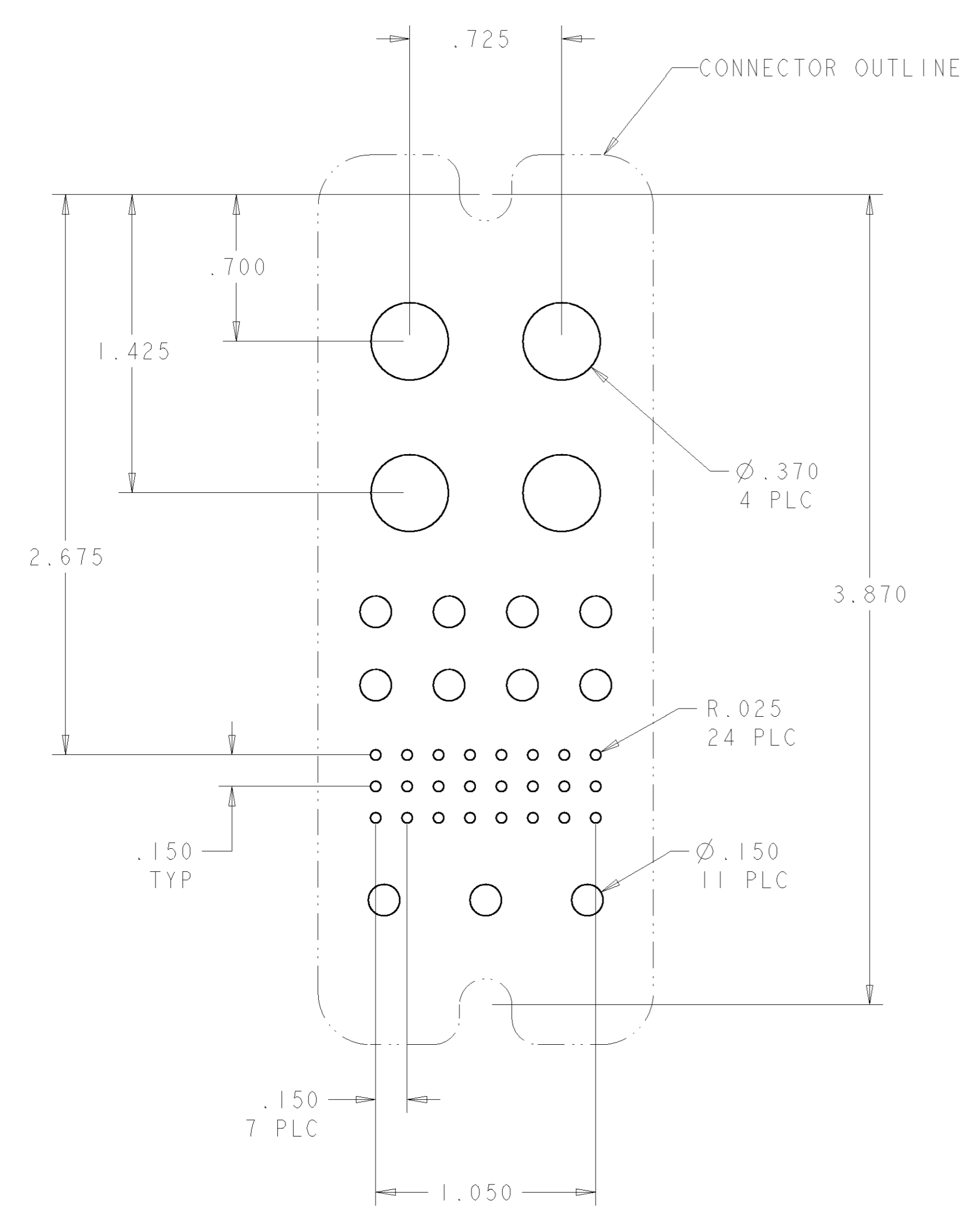
**ELCON DRAWER**

THIS DRAWING IS A CONTROLLED DOCUMENT FOR TYCO ELECTRONICS CORPORATION IT IS SUBJECT TO CHANGE AND THE CONTROLLING ENGINEERING ORGANIZATION SHOULD BE CONTACTED FOR THE LATEST REVISION.

DWN	R. GRZYBOWSKI	01FEB2006	Tyco Electronics Harrisburg, PA 17105-3608								
CHK	P. DAMATO	01FEB2006									
APVD	S. FLICKINGER	01FEB2006									
NAME	DOUBLE DRAWER CONNECTOR SOCKET										
DIMENSIONS:	INCHES 		SIZE	A200779	CAGE CODE	C-6766346	DRAWING NO	RESTRICTED TO			
TOLERANCES UNLESS OTHERWISE SPECIFIED:	0 PLC ± 1 PLC ± 2 PLC ±.02 3 PLC ±.010 4 PLC ± ANGLES ±.5 FINISH		PRODUCT SPEC			SCALE	2:1	SHEET	1 OF 2	REV	D
MATERIAL			APPLICATION SPEC			CUSTOMER DRAWING					

THIS DRAWING IS UNPUBLISHED. RELEASED FOR PUBLICATION 20  
 © COPYRIGHT 20 BY TYCO ELECTRONICS CORPORATION. ALL RIGHTS RESERVED.

LOC	DIST	REVISIONS					
GP	00	P	LTR	DESCRIPTION	DATE	DWN	APVD
		-		SEE SHEET 1	-	-	-



SUGGESTED PCB LAYOUT

SUGGESTED PANEL CUTOUT  
VIEWED FROM CONNECTOR MOUNTING SIDE

THIS DRAWING IS A CONTROLLED DOCUMENT FOR TYCO ELECTRONICS CORPORATION IT IS SUBJECT TO CHANGE AND THE CONTROLLING ENGINEERING ORGANIZATION SHOULD BE CONTACTED FOR THE LATEST REVISION.		DWN R. GRZYBOWSKI 01FEB2006	Tyco Electronics Harrisburg, PA 17105-3608	
DIMENSIONS: INCHES		CHK P. DAMATO 01FEB2006	NAME DOUBLE DRAWER CONNECTOR SOCKET	
TOLERANCES UNLESS OTHERWISE SPECIFIED: 0 PLC ± 1 PLC ± 2 PLC ±.02 3 PLC ±.010 4 PLC ± ANGLES ±.5 FINISH		APVD S. FLICKINGER 01FEB2006	RESTRICTED TO	
MATERIAL		PRODUCT SPEC -	SIZE A200779	CAGE CODE C-6766346
		APPLICATION SPEC -	DRAWING NO -	REV D
		WEIGHT -	SCALE 2:1	SHEET 2 OF 2
		CUSTOMER DRAWING		