

4

3

2

1

THIS DRAWING IS UNPUBLISHED.

RELEASED FOR PUBLICATION

© COPYRIGHT

ALL RIGHTS RESERVED.

LOC DIST

REVISIONS

P	LTR	DESCRIPTION	DATE	DWN	APVD

REPLACED BY OCEAN STYLE APPLICATOR PART NUMBER

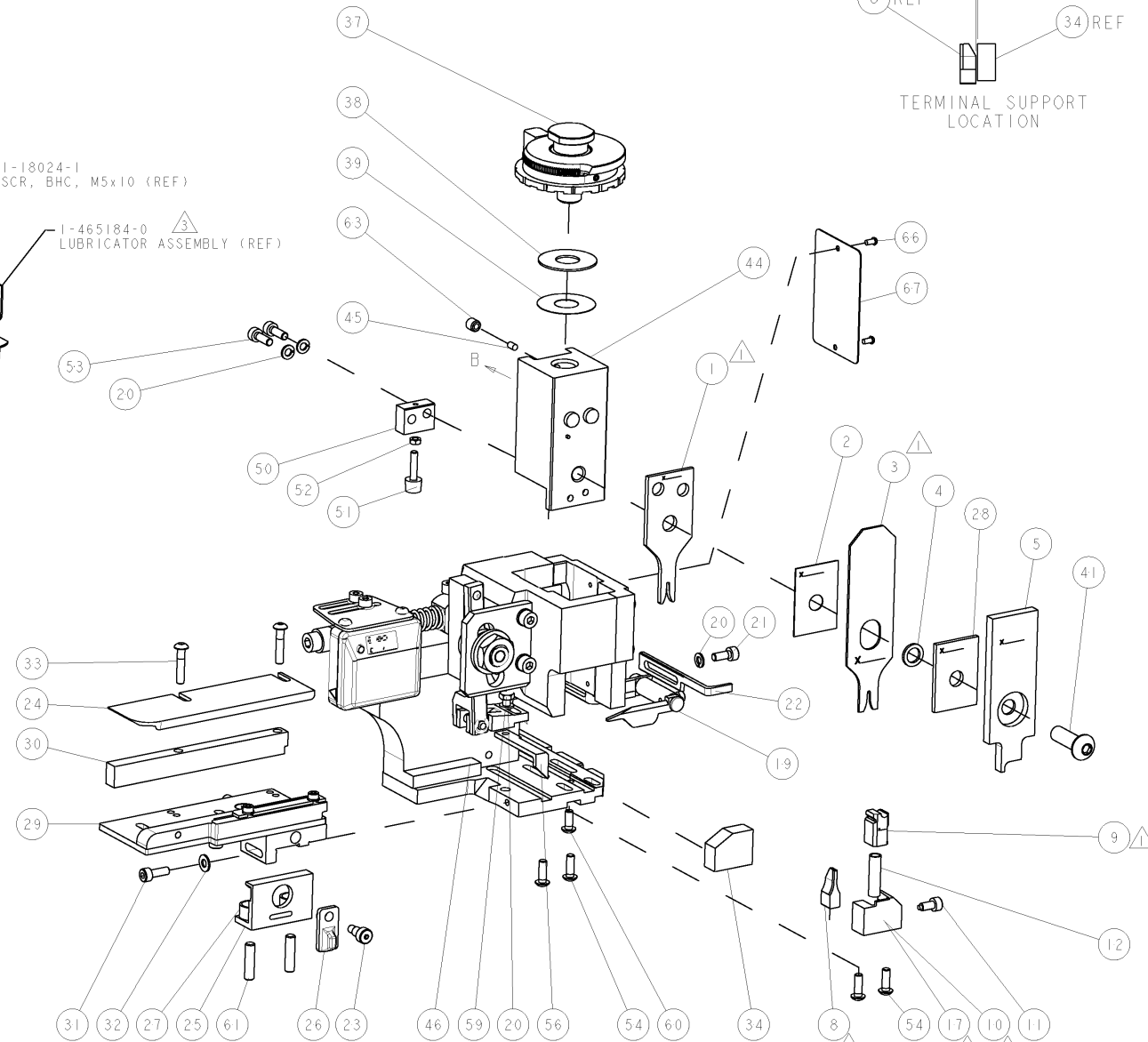
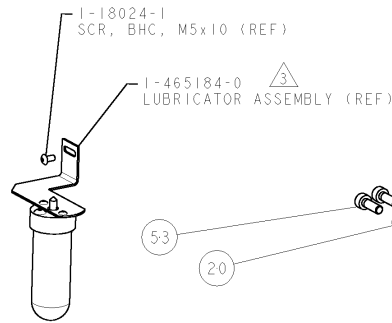
FOR REPLACEMENT PARTS FOR APPLICATOR REFER TO ADDITIONAL PAGE(S). SPARE PARTS KIT (IF LISTED) WILL REMAIN AVAILABLE.

THE REPLACEMENT OCEAN STYLE APPLICATOR HAS THE SAME TERMINATOR/PRESS INTERFACE AS APPLICATOR

THIS DRAWING IS A CONTROLLED DOCUMENT.		DWN	 TE Connectivity		
DIMENSIONS:		CHK			
TOLERANCES UNLESS OTHERWISE SPECIFIED:		APVD	NAME		
		PRODUCT SPEC	RESTRICTED TO		
		APPLICATION SPEC	SIZE	CAGE CODE	DRAWING NO
MATERIAL	FINISH	WEIGHT	A3	C-	
		SCALE	SHEET	OF	REV

PART NUMBER	REV	TERMINATOR	FEED TYPE	DESCRIPTION
1528710-1	A	LEADMAKER	MECH POST FEED	CUTS CARRIER
1528710-2	A	BENCH	MECH PRE FEED	CUTS CARRIER
1528710-6	A	LEADMAKER	MECH POST FEED	CONTINUOUS CARRIER
7-1528710-1	A	LEADMAKER	MECH POST FEED	-1 AND SPARE PARTS
7-1528710-2	A	BENCH	MECH PRE FEED	-2 AND SPARE PARTS
7-1528710-6	A	LEADMAKER	MECH POST FEED	-6 AND SPARE PARTS
7-1528710-7	A	-	-	SPARE PARTS KIT

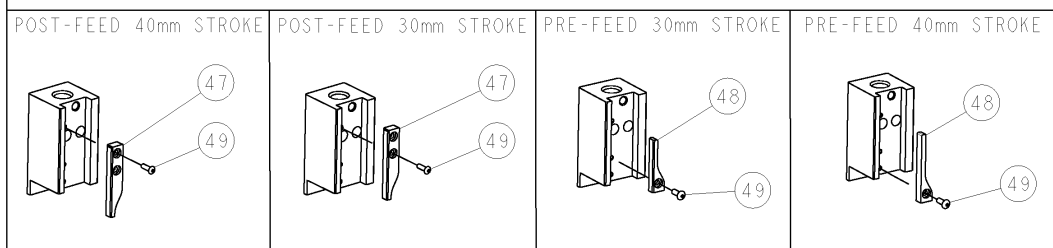
CRIMP DATA		TYCO TERMINAL		TYCO CRIMP SPECS	
TERMINAL NAME: PIN/SKT ASSY TYPE XI SIZE 20					
CRIMP	SIZE	TYPE	RANGE		
WIRE	1.40 [.055 IN]	F	24-20 AWG		
INSUL	1.78 [.070 IN]	O	1.57 MAX [.062 IN MAX]		
WIRE STRIP LENGTH		APPL INSTRUCTIONS			
2.77-3.58 [.109-.141 IN]		408-8322 & 408-8490			
TERMINAL APPL SPEC		114-10002		FEED 7.62 [.300 IN]	
TERMINALS APPLIED					
PIN	SOCKET				
203816	203802				
166046	164153				
WIRE SIZE	CRIMP HEIGHT	REF SETTING			
20 AWG	0.86 ± 0.05 [.034 ± .002 IN]	B 1			
22 AWG or 24 AWG	0.71 ± 0.05 [.028 ± .002 IN]	C 3			



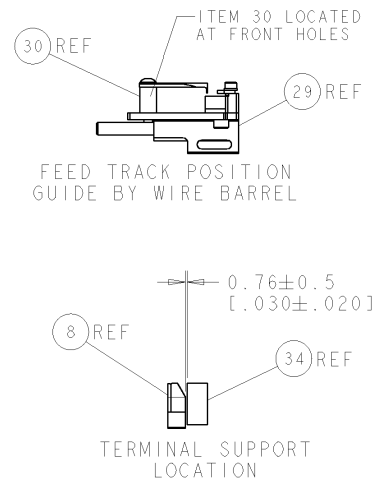
*** WARNING**
ON INSTALLATION, SET WIRE DISC TO LARGEST WIRE SIZE SETTING. USE OF SETTINGS BELOW MIN. REQUIRED CRIMP HEIGHT SETTING WILL CAUSE DAMAGE TO CRIMP TOOLING.

- ⚠️ RECOMMENDED SPARE PARTS.
- 2. GREASE RAM, CAM, CAM FOLLOWER AND FEED ROD LIGHTLY.
- ⚠️ CERTAIN TERMINALS REQUIRE LUBRICATION. REFER TO THE APPLICATOR INSTRUCTION SHEET FOR MORE INFORMATION.
- 4. LUBRICATE DAILY PER THE APPLICATOR INSTRUCTION SHEET SUPPLIED WITH THE APPLICATOR.

VIEW B ROTATED 180°



ITEM NO	PART NO	DESCRIPTION
84		
83		
82		
81		
80		
79		
78		
77		
76		
75		
74		
73		
72		
71		
70		
69		
68		
67		
66		
65		
64		
63		
62		
61		
60		
59		
58		
57		
56		
55		
54		
53		
52		
51		
50		
49		
48		
47		
46		
45		
44		
43		
42		
41		
40		
39		
38		
37		
36		
35		
34		
33		
32		
31		
30		
29		
28		
27		
26		
25		
24		
23		
22		
21		
20		
19		
18		
17		
16		
15		
14		
13		
12		
11		
10		
9		
8		
7		
6		
5		
4		
3		
2		
1		



SET UP GAGE
458637-3

REVOLUTIONS		DATE	OWN	APPV
REV	DESCRIPTION			
A	SEE ECO-06-024571	180CT2006	LJL	MC

ITEM NO	DESCRIPTION	DATE	OWN	APPV
73				
72				
71	DOCUMENTATION PACKAGE			
70				
69				
68				
67	PLATE, IDENTIFICATION			
66	SCREW, DRIVE			
65				
64				
63	SCR, SET, CUP POINT M6 X 6.0			
62				
61	SCR, SET, FLT POINT M5 X 20.0			
60	SCR, BTN SKT HD CAP (M4 X 10.0)			
59	SCR, HEX HD CAP M4 X 8.0			
58				
57				
56	PAWL, FEED			
55				
54	SCR, BTN SKT HD CAP (M4 X 12.0)			
53	SCR, SKT HD CAP M4 X 12.0			
52	NUT, HEX, REG M3			
51	BUMPER, HOLD DOWN			
50	SPACER, TONKER			
49	SCR, BTN SKT HD CAP (M3 X 10.0)			
48	CAM, UNIVERSAL PRE FEED			
47	CAM, UNIVERSAL POST-FEED			
46	APPLICATOR SUBASSEMBLY, HDI			
45	PLUG, NYLON			
44	RAM			
43				
42				
41	SCR, BTN SKT HD CAP (M8 X 25.0)			
40				
39	SHIM SUB-ASSY			
38	SHIM			
37	FINE ADJUST HEAD ASSEMBLY			
36				
35				
34	SUPPORT, TERMINAL			
33	SCR, BTN SKT HD CAP (M4 X 20.0)			
32	WASHER, FLAT, REG M4			
31	SCR, SKT HD CAP M4 X 12.0			
30	SPACER, STRIP GUIDE			
29	STRIP GUIDE ASSEMBLY			
28	SPACER, CRIMPER			
27	SPRING, COMPRESSION			
26	LEVER, DRAG RELEASE			
25	DRAG, TERMINAL			
24	PLATE, STRIP GUIDE			
23	SCR, SKT HD SHLDR 5.0 DIA X 6.0			
22	STRIPPER			
21	SCR, SKT HD CAP M4 X 10.0			
20	WASHER, SPRG LOCK, REG M4			
19	STRIPPER/ WIRE STOP ASSY			
18				
17	SHEAR HOLDER, FRONT			
16				
15				
14				
13				
12	SPRING, COMPRESSION			
11	STOP, SHEAR			
10	SHEAR HOLDER, FRONT, CUT			
9	FLOATING SHEAR, FRONT			
8	ANVIL, COMBINATION .055			
7				
6				
5	DEPRESSOR, SHEAR			
4	BLOCK, CRIMPER SPACER			
3	CRIMPER, INSULATION 0 PREMIUM			
2	SPACER, CRIMPER			
1	CRIMPER, WIRE PREMIUM			

APPROVED FOR FABRICATION AND TESTING BY THE FOLLOWING ORGANIZATION:

DIMENSIONS: mm [IN] TOLERANCES UNLESS OTHERWISE SPECIFIED:

MATERIAL: FINISH:

APPROVED: M. CLIFFORD 25AUG06

PRODUCT SPEC: APPLICATION SPEC: See Table

WEIGHT: A1 00779 C=1528710

CUSTOMER DRAWING: SCALE: 3:5 SHEET 1 OF 1 REV A

tyco Electronics Tyco Electronics Harrisburg, PA 17105-3608

NAME: FINE ADJUST SIDE FEED HDI APPLICATOR

SIZE: CARE CODE: DRAWING NO: RESTRICTED TO: