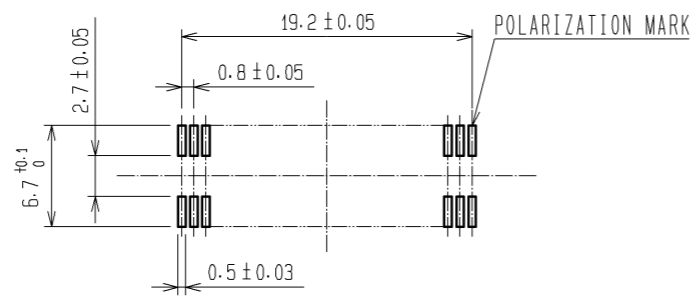
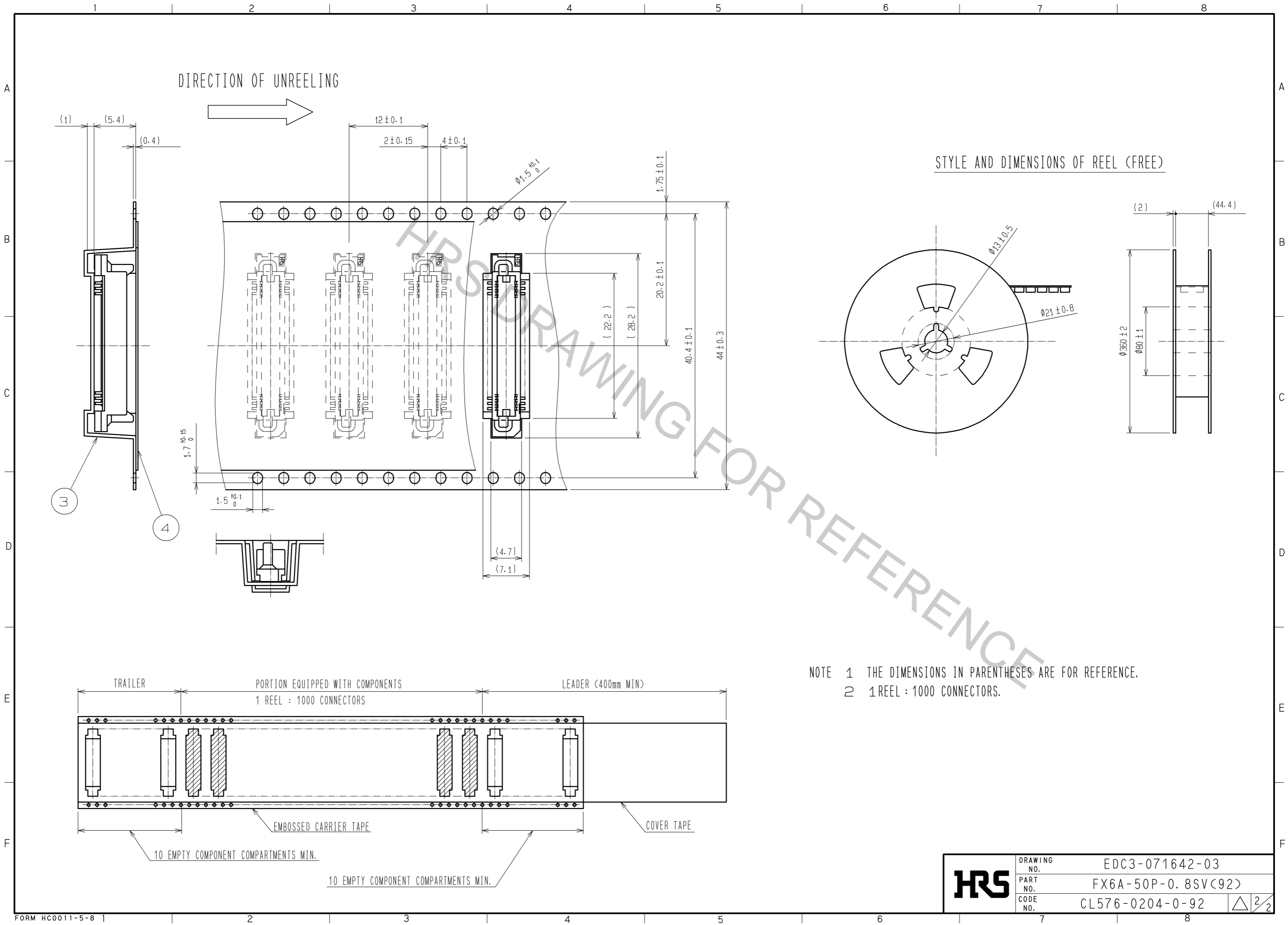


- NOTES
- ① HRS MARK SHOULD BE OPTIONAL.
  2. LEAD CO-PLANARITY SHALL BE 0.1mm MAX.
  3. THE DIMENSIONS IN PARENTHESES ARE FOR REFERENCE.
  4. EMBOSSED CARRIER TAPE PACKAGING SHALL BE APPLIED FOR THIS PRODUCT.
  5. FOR MODIFICATION, ETC., PREVENTIVE HOLE FOR SINK MARK MAY BE ADDED ACCORDING TO CIRCUMSTANCES.

RECOMMENDED P.C.B. LAND PATTERN (MOUNTING SIDE)  
(RECOMMENDED METAL MASK THICKNESS: 0.15mm)



1	PPS	LIGHT BROWN UL94V-0	4	POLYESTER	COVER TAPE
			3	POLYSTYRENE	EMBOSSED CARRIER TAPE
			2	PHOSPHOR BRONZE	CONTACT AREA : GOLD 0.1 μm min. LEAD AREA : GOLD FLASH UNDER PLATING : NICKEL 1.5 μm min.
NO.	MATERIAL	FINISH . REMARKS	NO.	MATERIAL	FINISH . REMARKS
UNITS mm		SCALE 2 : 1	COUNT 	DESCRIPTION OF REVISIONS	
<b>HRS</b> HIROSE ELECTRIC CO., LTD.		APPROVED : HS. OKAWA 14.12.08	DESIGNED		
		CHECKED : HT. YAMAGUCHI 14.12.08	CHECKED		
		DESIGNED : KJ. NISHIWAKI 14.12.08	DATE		
		DRAWN : KN. YAMAZAKI 14.12.05			
		DRAWING NO. EDC3-071642-03			
		PART NO. FX6A-50P-0.8SV(92)			
		CODE NO. CL576-0204-0-92			



<b>HRS</b>	DRAWING NO.	EDC3-071642-03
	PART NO.	FX6A-50P-0.8SV(92)
	CODE NO.	CL576-0204-0-92
		△ 2/2