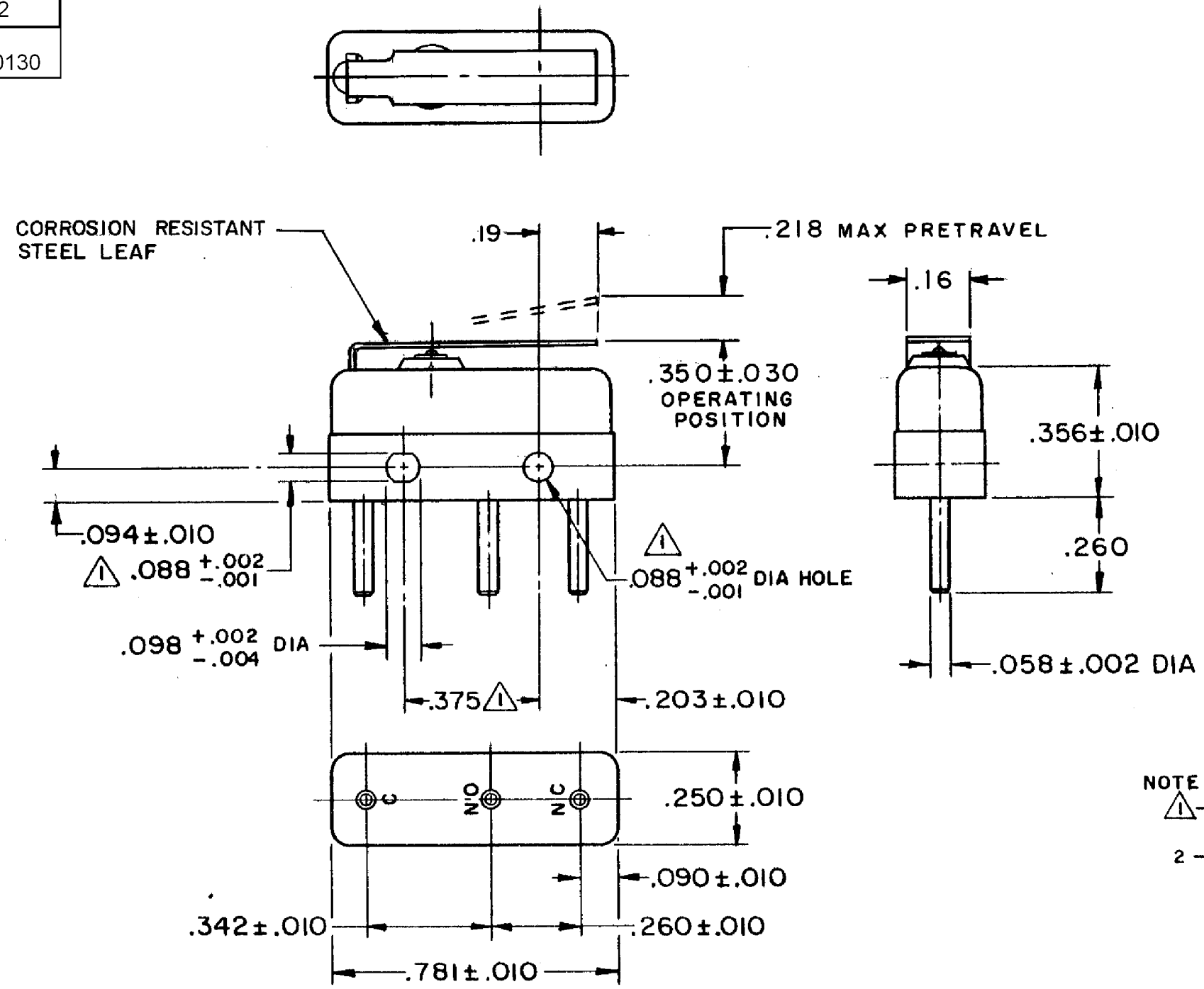


HONEYWELL
PART NUMBER
111SM1-H2
PRODUCT CODE
TYJ0130

REV	DOCUMENT	CHANGED BY	CHECK
8	0038225	PRS 04APR08	BLR



NOTE -
 ▲ - MOUNTING HOLES WILL ACCEPT PINS OR SCREWS OF .087 MAX DIA ON $.375 \pm .002$ CENTERS
 2 - PLATED TERMINALS WILL ACCEPT AIRCRAFT MARINE PRODUCTS CO NO. 42429 CONNECTOR

RELEASE NO.	SR - 9736
REPLACES	-

CHARACTERISTICS	
OPERATING FORCE	7 OZ MAX
RELEASE FORCE	2 OZ MIN
DIFFERENTIAL TRAVEL	.030 MAX
OVERTRAVEL	.030 MIN

ELECTRICAL DATA		
CONTACT ARRANGEMENT SPDT		
30 VOLTS DC RATING		
	SEA LEVEL	50,000 FT
INDUCTIVE	3 AMP	2.5 AMP
RESISTIVE	5 AMP	5 AMP
MAXIMUM INRUSH 24 AMP		
APPROVALS	KEMA, CE	5A, 250V ~ T85 1E4
	UL, CSA	5A, 250 VAC ~

DESIGN UNITS: INCH	
TOLERANCES UNLESS NOTED:	
NO PLACE	X ±
ONE PLACE	.X ±
TWO PLACE	.XX ±
THREE PLACE	.XXX ±
FOUR PLACE	.XXXX ±
ANGLES	±
THIRD ANGLE PROJECTION	

DRAWN	VK	23 OCT 07
CHECK	RJ	23 OCT 07
THIS DRAWING COVERS A PROPRIETARY ITEM AND IS THE PROPERTY OF HONEYWELL. THIS DRAWING IS NOT TO BE COPIED OR USED WITHOUT THE PERMISSION OF HONEYWELL.		
INTERPRET PER ANSI Y14.5M-1982 OTHER HONEYWELL ENGINEERING STANDARDS MAY APPLY		
RASTER		

Honeywell			
TITLE SWITCH - BASIC			
SIZE	TYPE	DRAWING NAME	REV
B	I	111SM1-H2	8
SCALE	-	WEIGHT .006 LB MAX	SHEET 1 OF 1