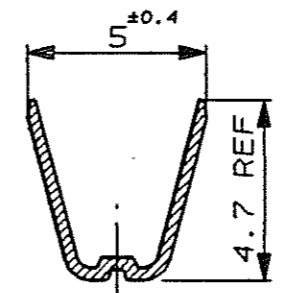
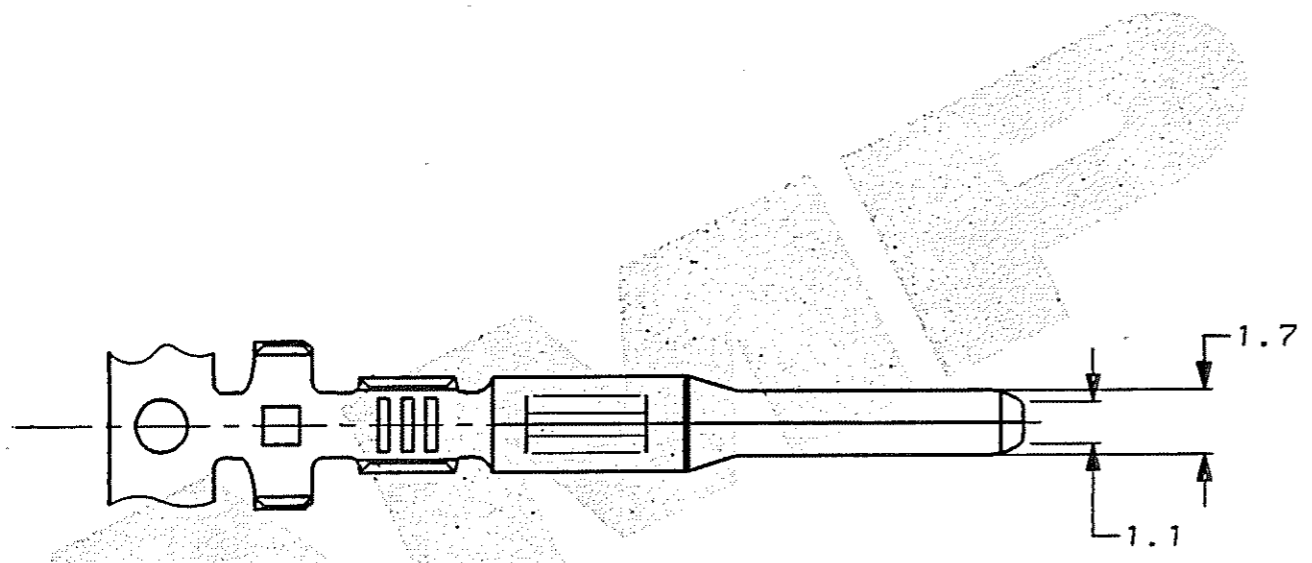
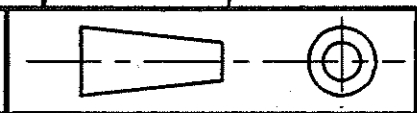


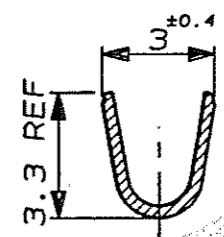
C.A.D. FILE CODE
C345263

DO NOT SCALE

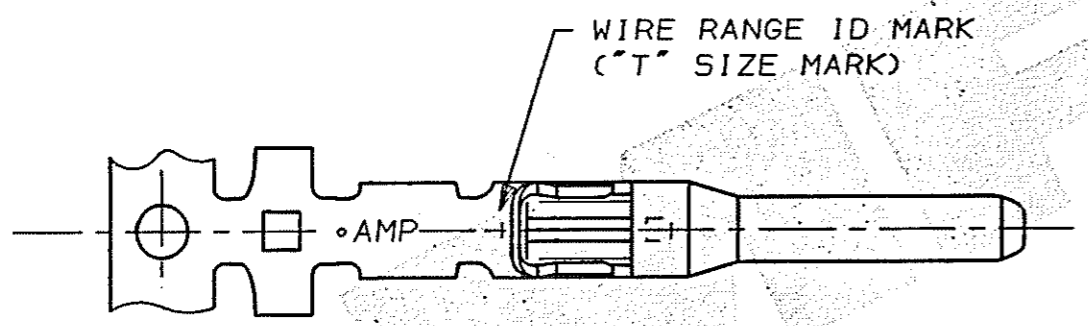
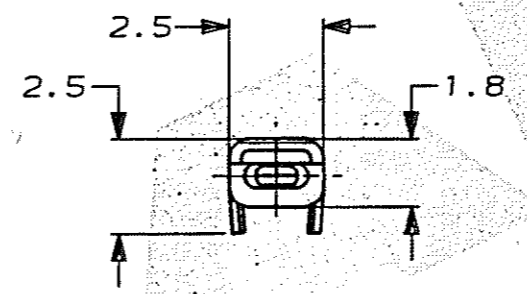
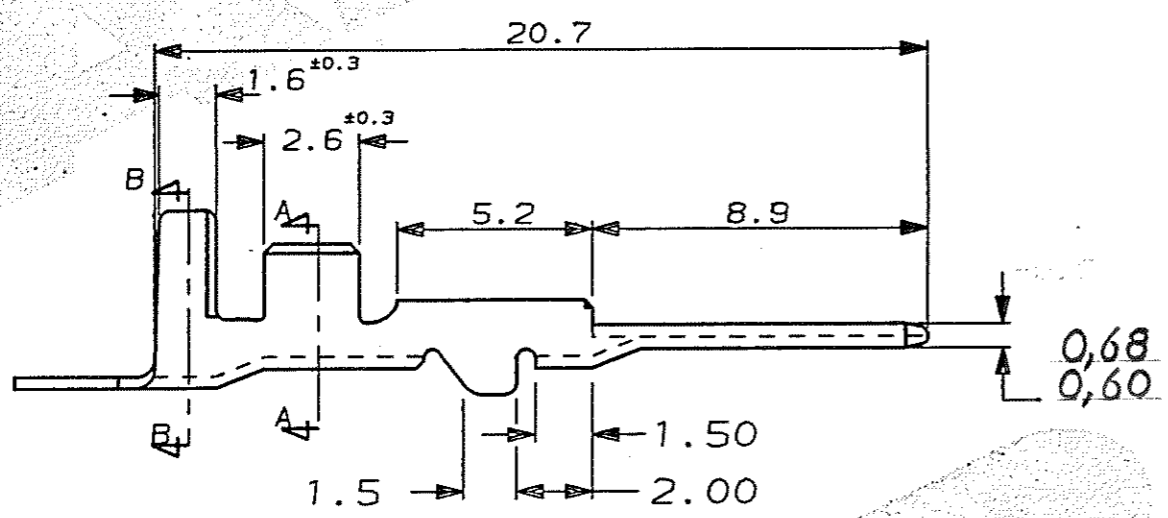
DIMENSIONS IN MM.



SECT B-B



SECT A-A



WIRE RANGE ID MARK
("T" SIZE MARK)

NOTE

1. WIRE DETAILS : 2.00mm² , 2.4-2.7 INS. DIA.
2. SIMILAR TO PART NUMBER 175191.

| | | | | | |
|------------------------------------|----------|--|-----------|---|--------------------|
| PRE-TIN | | BRASS | | 345263-1 | |
| FINISH | | MATERIAL | | PART NUMBER | |
| CUSTOMER DWG FOR REFERENCE ONLY | | ©COPYRIGHT 1991 BY AMP OF GREAT BRITAIN LTD. ALL INTERNATIONAL RIGHTS RESERVED. ALL PRODUCTS MAY BE COVERED BY BRITISH AND FOREIGN PATENTS AND/OR PATENTS PENDING. | | RELEASED FOR PUBLICATION 15 OCT 1991 | |
| - | | TOLERANCES UNLESS OTHERWISE STATED : | | DR. D.R. TERRY 16 OCT 1991 | |
| - | | DEC ± 0.5 | | CH. M MISTRY APP. M MISTRY | |
| - | | ANGLES ± 1° | | TE Connectivity | |
| - | | NAME 0.70 SERIES TAB CONTACT, MULTI-LOCK | | | |
| E | BB | ECR-14 -007031 | 27MAY2014 | SCALE 5/1 | LOC E |
| REV | APPROVED | ECN | DATE | SIZE A3 | DWG.No. C345263 |
| | | | | REV E | SHEET 1/1 |