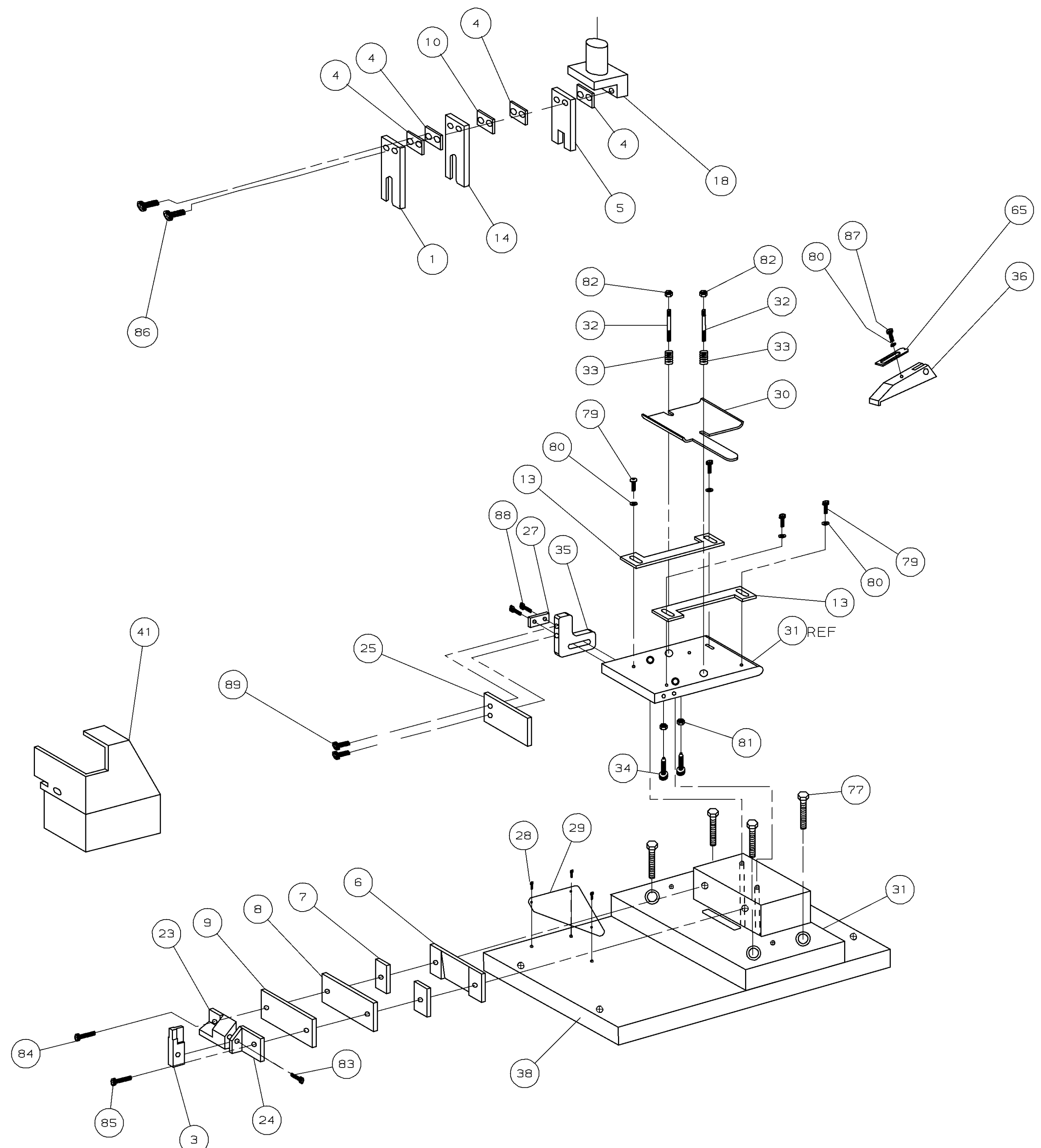


PART NUMBER	REV	FIRST USED
680599	A	565433-4

TERMINAL NAME:		CRIMPING DATA	
RECEPTACLE, SHUR PLUG		CRIMP HEIGHT	WIRE SIZE
1217074		.155±.002 [3.94±0.05mm]	(2) 8
CRIMP	SIZE	TYPE	RANGE
WIRE	.300 [7.62mm]	F	8
INSUL	-		
FEED	APPL INST	SET UP GAGE	LAYOUT
.950	-	679597-1	L2048
TERM APPL SPEC -		WIRE STRIP LENGTH -	

THIS DRAWING IS A CONTROLLED DOCUMENT.



- 1 RECOMMENDED SPARE PARTS.
- 2 ITEMS NOT SHOWN.

-	-	-	-	-	129
-	-	-	-	-	128
-	-	-	-	-	127
-	-	-	-	-	126
-	-	-	-	-	125
-	-	-	-	-	124
-	-	-	-	-	123
-	-	-	-	-	122
-	-	-	-	-	121
-	-	-	-	-	120
-	-	-	-	-	119
-	-	-	-	-	118
-	-	-	-	-	117
-	-	-	-	-	116
-	-	-	-	-	115
-	-	-	-	-	114
-	-	-	-	-	113
-	-	-	-	-	112
-	-	-	-	-	111
-	-	-	-	-	110
-	-	-	-	-	109
-	-	-	-	-	108
-	-	-	-	-	107
-	-	-	-	-	106
-	-	-	-	-	105
-	-	-	-	-	104
-	-	-	-	-	103
-	-	-	-	-	102
-	-	-	-	-	101
-	-	-	-	-	100
-	-	-	-	-	99
-	-	-	-	-	98
-	-	-	-	-	97
-	-	-	-	-	96
2	-	B	694788-1	WASHER, PLATE	95
4	-	A	21024-8	WASHER, LOCK 3/8	94
4	-	A	3-21015-4	SCR, HEX HD 3/8-16 X 13/4	93
-	-	-	-	-	92
2	-	A	21055-8	WASHER, FLAT, 1/4	91
2	-	A	21001-6	SCR, SHC, 1/4-20 X 1.00	90
2	-	A	3-21000-5	SCR, SHC, 10-32 X .500	89
2	-	A	3-21000-8	SCR, SHC, 10-32 X .875	88
1	-	A	7-21000-4	SCR, SHC, 8-32 X .312	87
2	-	A	21001-8	SCR, SHC, 1/4-20 X 1.50	86
1	-	A	3-21001-7	SCR, SHC, 3/8-16 X 1.50	85
1	-	A	3-21001-8	SCR, SHC, 3/8-16 X 1.75	84
1	-	A	21001-3	SCR, SHC, 1/4-20 X .62	83
2	-	A	21022-4	NUT, HEX, S/L, 1/4-20	82
2	-	A	21018-7	NUT, HEX, 10-32	81
5	-	A	21055-6	WASHER, FLAT, #8	80
4	-	A	2-21000-7	SCR, SHC, 8-32 X .50	79
-	-	-	-	-	78
4	-	A	5-21001-2	SCR, SOC HD, 1/2-13 X 1.25	77
-	-	-	-	-	76
-	-	-	-	-	75
-	-	-	-	-	74

-	-	-	-	-	73
-	-	-	-	-	72
-	-	-	-	-	71
-	-	-	-	-	70
-	-	-	-	-	69
-	-	-	-	-	68
-	-	-	-	-	67
-	-	-	-	-	66
1	-	A	374999	TENSION ADJ. PLATE	65
-	-	-	-	-	64
1	-	D	690021-3	2" AIR FEED ASSY	63
-	-	-	-	-	62
-	-	-	-	-	61
-	-	-	-	-	60
-	-	-	-	-	59
-	-	-	-	-	58
-	-	-	-	-	57
-	-	-	-	-	56
-	-	-	-	-	55
-	-	-	-	-	54
-	-	-	-	-	53
-	-	-	-	-	52
-	-	-	-	-	51
-	-	-	-	-	50
-	-	-	-	-	49
-	-	-	-	-	48
-	-	-	-	-	47
-	-	-	-	-	46
-	-	-	-	-	45
-	-	-	-	-	44
-	-	-	-	-	43
-	-	-	-	-	42
1	-	D	460677-1	GUARD	41
-	-	-	-	-	40
1	-	C	565154-3	BASE CASTING	38
-	-	-	-	-	37
1	-	A	375093	FEED FINGER	36
1	-	A	386231	MOUNT, STRIPPER	35
2	-	A	372997	ADJ. SCREW, STOCK DRAG	34
2	-	A	1-23847-0	SPRING, STOCK DRAG	33
2	-	B	354045-1	STUD, STOCK DRAG	32
1	-	C	570703-1	APPLICATOR MOUNT ASSY	31
1	-	A	376666	STOCK DRAG	30
1	-	B	452373-1	PLATE, IDENTIFICATION	29
3	-	A	21017-6	SCR, DRIVE	28
1	-	A	372251	PLATE, RETAINER	27
-	-	-	-	-	26
1	-	B	371007	STRIPPER	25
1	-	A	377515	HOLDER, AUX. ANVIL	24
1	-	A	370526	HOLDER, ANVIL	23
-	-	-	-	-	22
-	-	-	-	-	21
-	-	-	-	-	20
-	-	-	-	-	19
1	-	B	465308-1	TOOL HOLDER	18
1	-	B	1213553-1	BRACKET	17
-	-	-	-	-	16
-	-	-	-	-	15
1	-	B	1320110-1	STABILIZER	14
2	-	B	371584	STRIP GUIDE	13
-	-	-	-	-	12
-	-	-	-	-	11
1	-	C	854652-8	SPACER	10
1	-	C	1320111-1	PLATE, SPACER	9
1	-	C	387158-5	PLATE, FRONT SHEAR	8
2	-	B	385047	SPACER, SHEAR BLADE	7
1	-	B	370484	PLATE, REAR SHEAR	6
1	-	C	1-470938-9	SHEAR BLADE	5
4	-	B	854652-7	SPACER	4
1	-	B	371678-3	ANVIL	3
-	-	-	-	-	2
1	-	C	453930-5	CRIMPER, WIRE	1

U/M	DWG SIZE	PART NO	DESCRIPTION	ITEM NO
-1			REVISION OF EACH ASSY NO (WHEN BLANK, USE DWG REVISION)	

U/M	DWG SIZE	PART NO	DESCRIPTION	ITEM NO
-1			REVISION OF EACH ASSY NO (WHEN BLANK, USE DWG REVISION)	

LOC A  
DIST 4

REV	DATE	BY	APP	DESCRIPTION
A	8-98	CE	APP	REVISED

DIMENSIONS IN INCHES. DO NOT SCALE PRINT. TOLERANCES UNLESS OTHERWISE SPECIFIED:  
 2 PLC DEC ±  
 3 PLC DEC ±  
 4 PLC DEC ±  
 ANGLES ±  
 SURF TEXTURE: ✓  
 REMOVE BURRS, BREAK SHARP EDGES R.015 MAX

MATL - HT TR - FIN -  
 DR W.HOOVER 3-30-98 APP T. ELBIN 3-30-98  
 CHK C ERISMAN 3-30-98 REL -  
 NAME END FEED STD APPLICATOR MACHINE REF STD APPL  
 SCALE 1:4 DWG NO 680599 SHEET 1 OF 1 REV A

AMP Incorporated Harrisburg, PA 17105-3608

CAGE CODE 00779 CUSTOMER AND ASSEMBLY DRAWING RESTRICTED TO