

DETAILS

| | |
|------------------------|-----------------------|
| Product Number | C13023_STRADA-C2-CLIP |
| Family | Strada |
| Type | Lens |
| Color | clear |
| Diameter | 19,6 x 15,5 mm |
| Height | 5,7 mm |
| Style | rectang |
| Optic Material | PC |
| Holder Material | |
| Fastening | clips |
| Status | production ready |
| ROHS Compliant | Yes |
| Date Updated | 17/10/2013 |

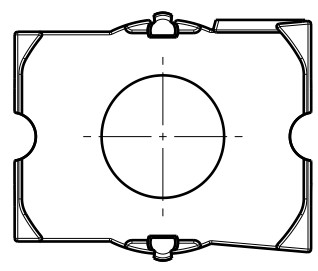
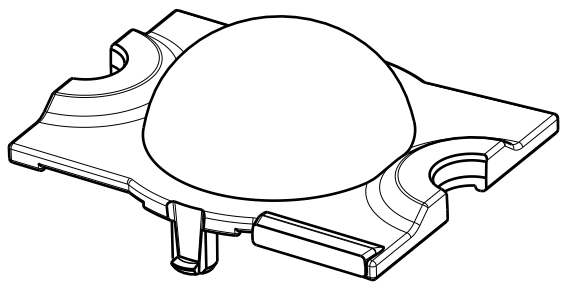


OPTICAL PROPERTIES

| LED | Viewing Angle | Light Beam | Efficiency | cd/lm | Connector |
|---------|---------------|---------------|------------|-------|-----------|
| PSL440 | 133 deg | Streetligh... | 94 % | 0.290 | - |
| XM-L | 132 deg | Streetligh... | 93 % | 0.200 | - |
| XM-L2 | 139 deg | Streetligh... | 91 % | 0.200 | - |
| NS9x383 | 140 deg | Streetligh... | 91 % | 0.250 | - |

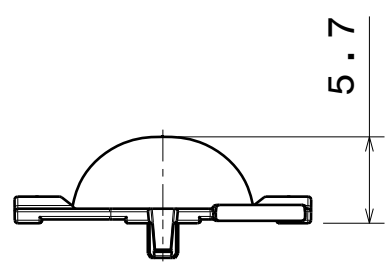
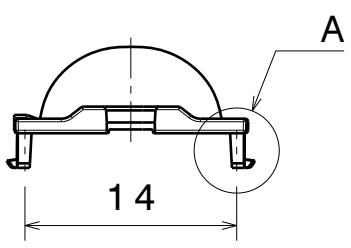
D C B A

4



4

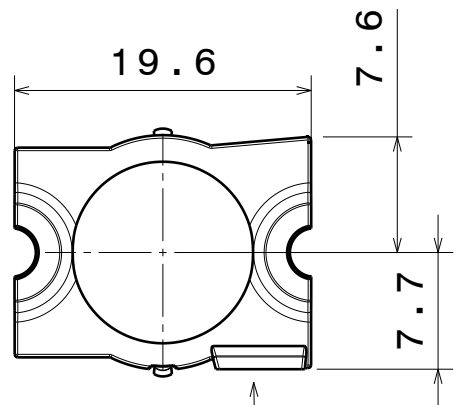
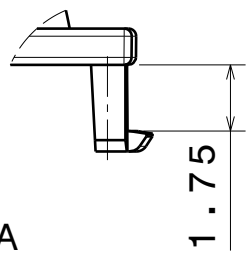
3



3

2

Detail A
Scale: 5:1



2

RAW MATERIAL:
PC
Tolerances:
Dimensions +/- 0,1 if not otherwise shown.

Injection gate

This drawing is our property.
It can't be reproduced
or communicated without
our written agreement.



Ledil Oy
Salorankatu 10
FIN-24240 SALO
Finland

DRAWING TITLE
Datasheet Strada-C2_CLIP_XML lens

DRAWN BY
pl
DATE
20.03.2012

CHECKED BY
DATE

SIZE A4
DRAWING NUMBER C13023
REV 1

DESIGNED BY
pl
DATE
20.06.2012

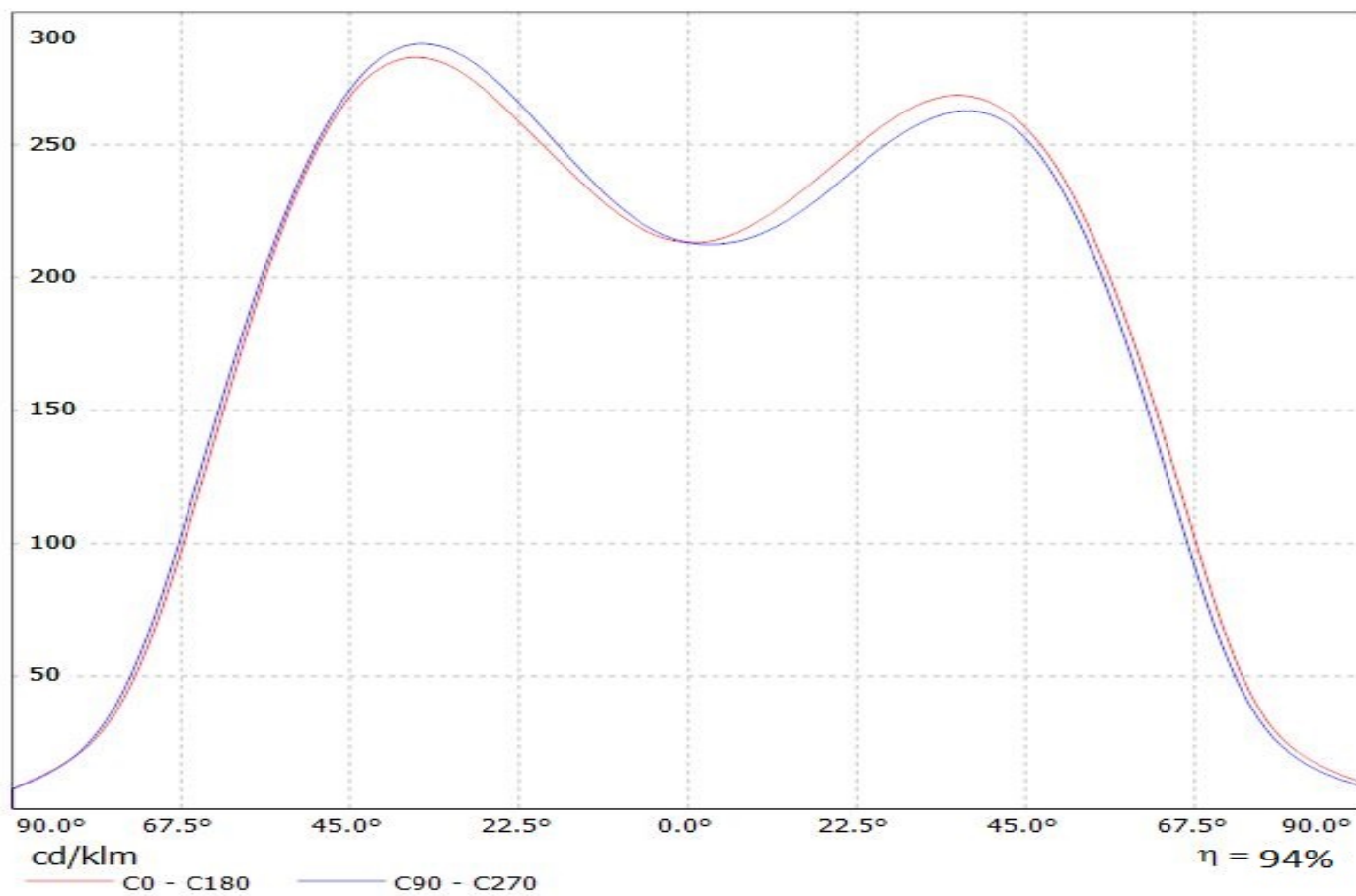
SCALE 2:1
WEIGHT (g)
SHEET 1/1

1

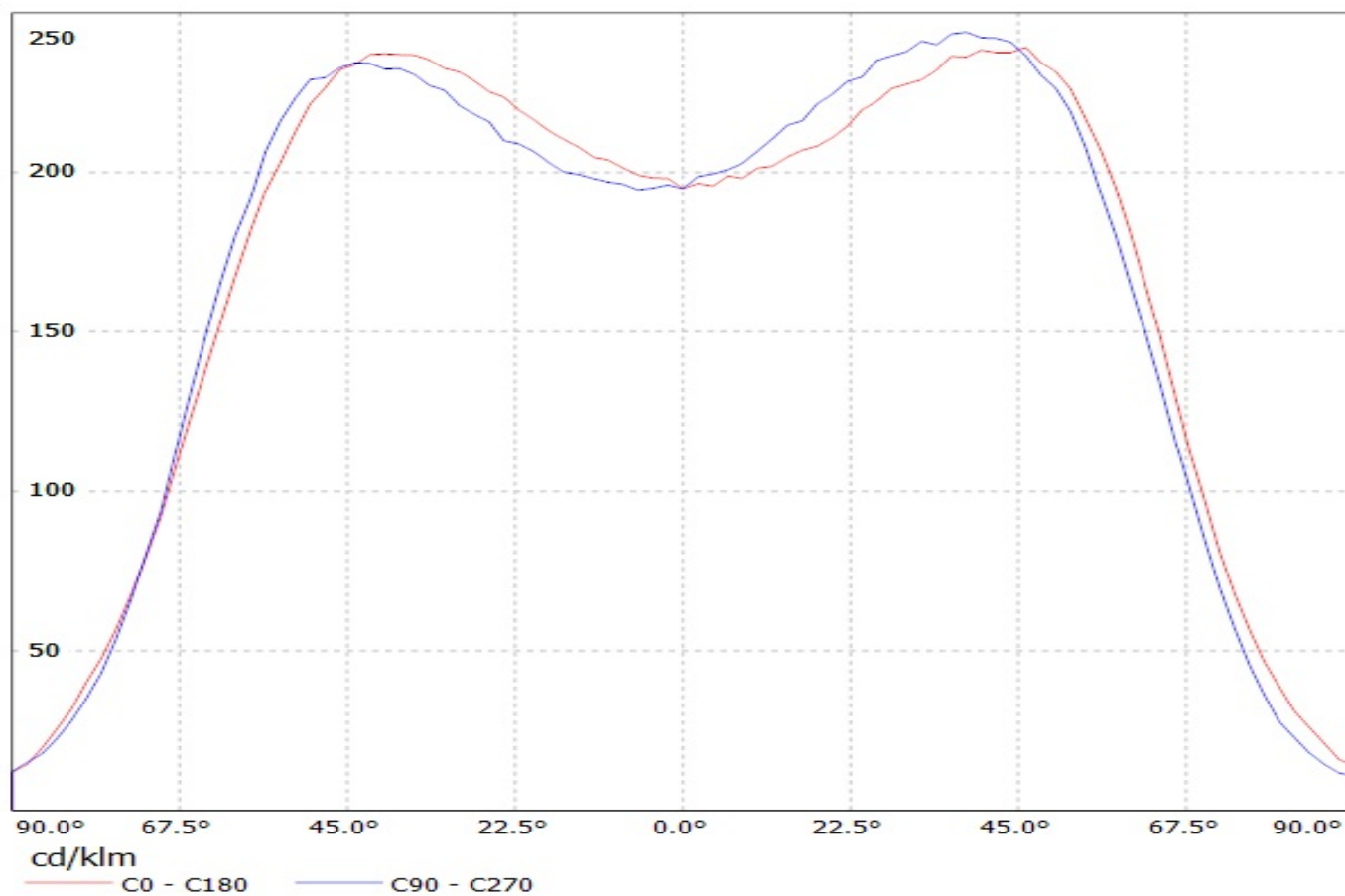
1

D A

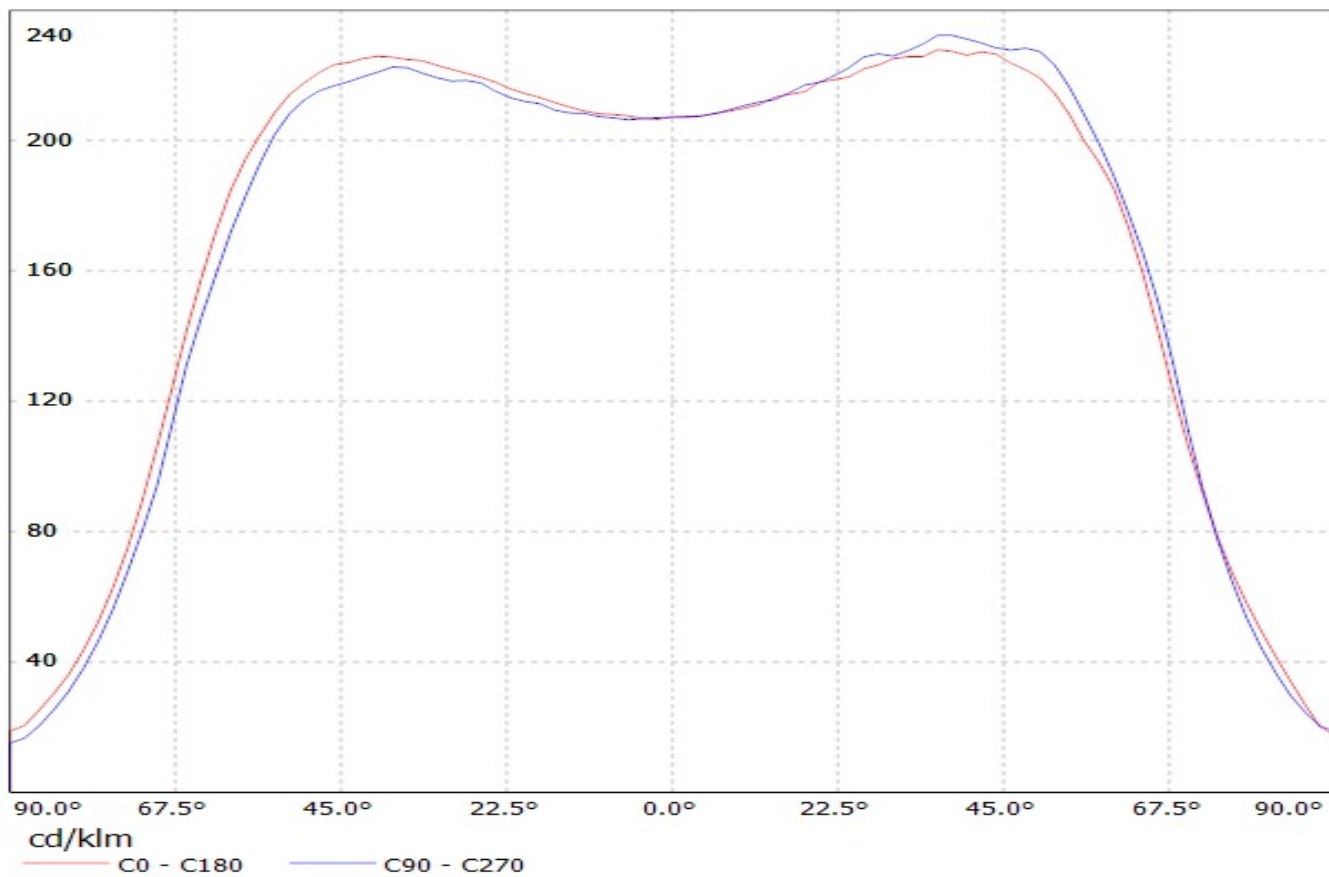
Luminaire: LEDiL Oy C13023_STRADA-C2-CLIP_(PSL440)
Lamps: 1 x Citizen_PSL440_256.584lm@250mA_P=2.86745W_I=0.250A



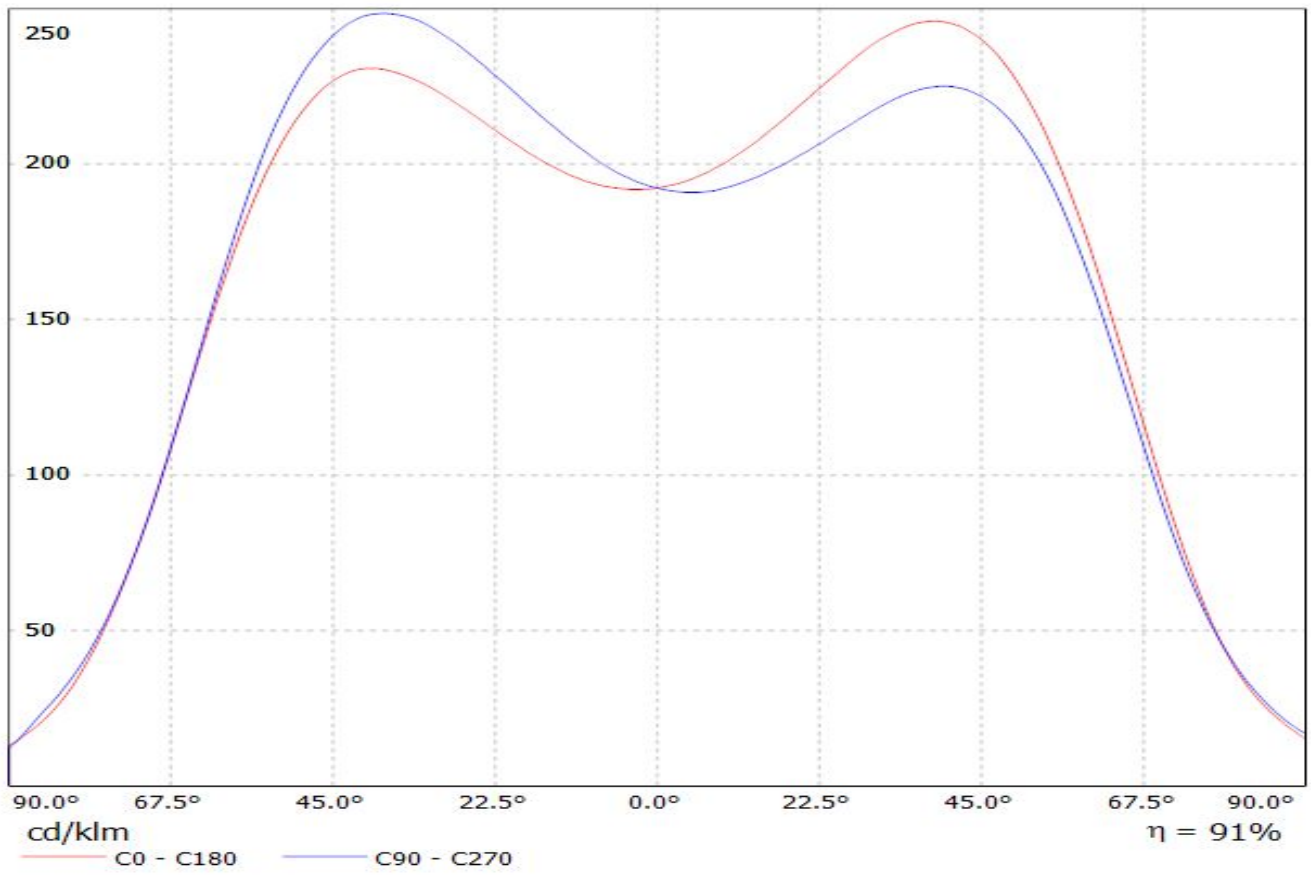
Luminaire: Ledil Oy C13023_STRADA_C2_CLIP (Cree XM-L 92lm @ 250mA) Efficiency=93%
Lamps: 1 x Cree XM-L 92lm @ 250mA



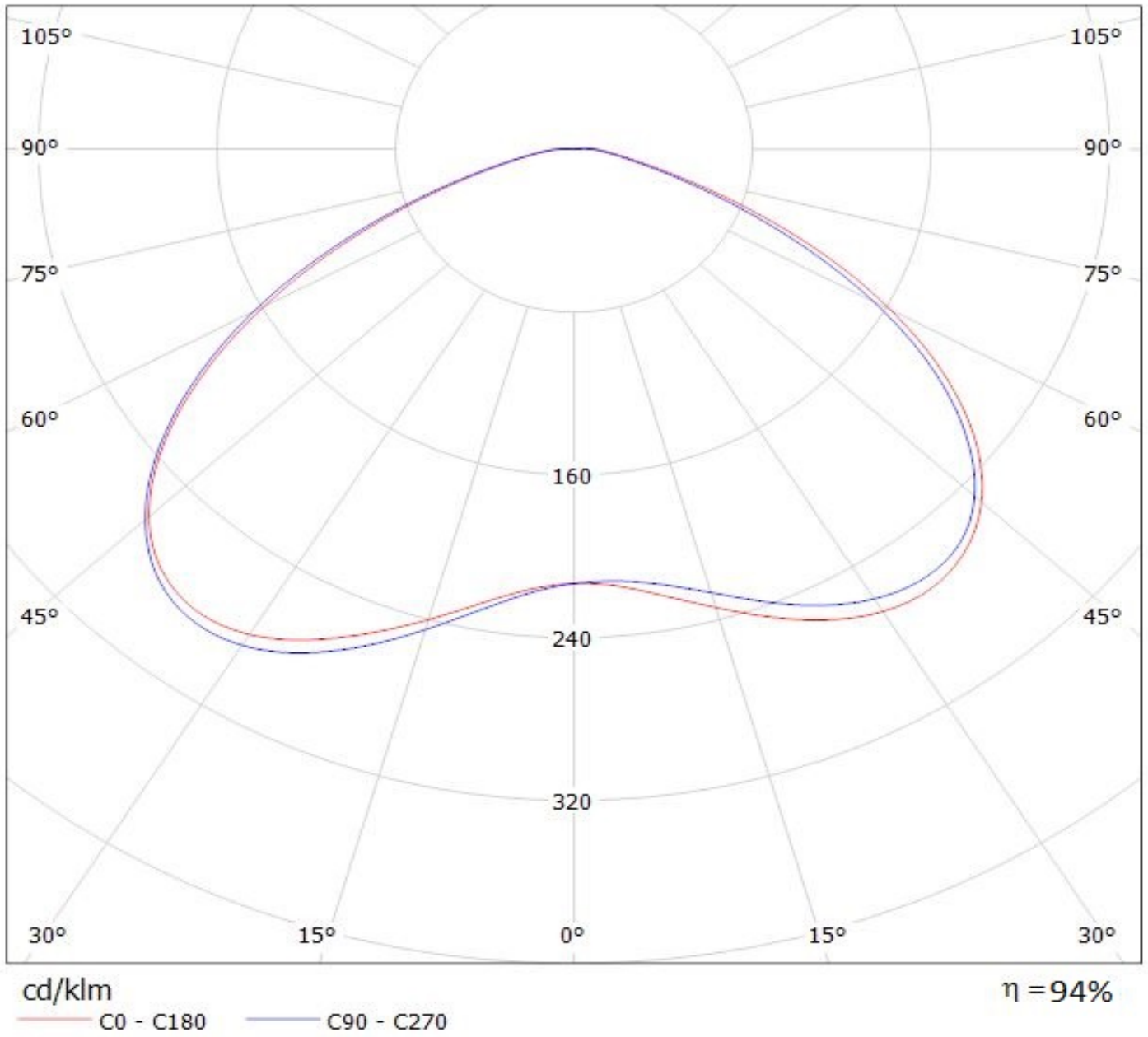
Luminaire: LEDil Oy C13023_STRADA-C2-CLIP_(XM_L2) Efficiency=91%
Lamps: 1 x Cree XM-L2 (XMLBWT--0-7B4-T30-0L-0001) 91lm @ 250mA CCT=3200K P=0.7W I=250mA



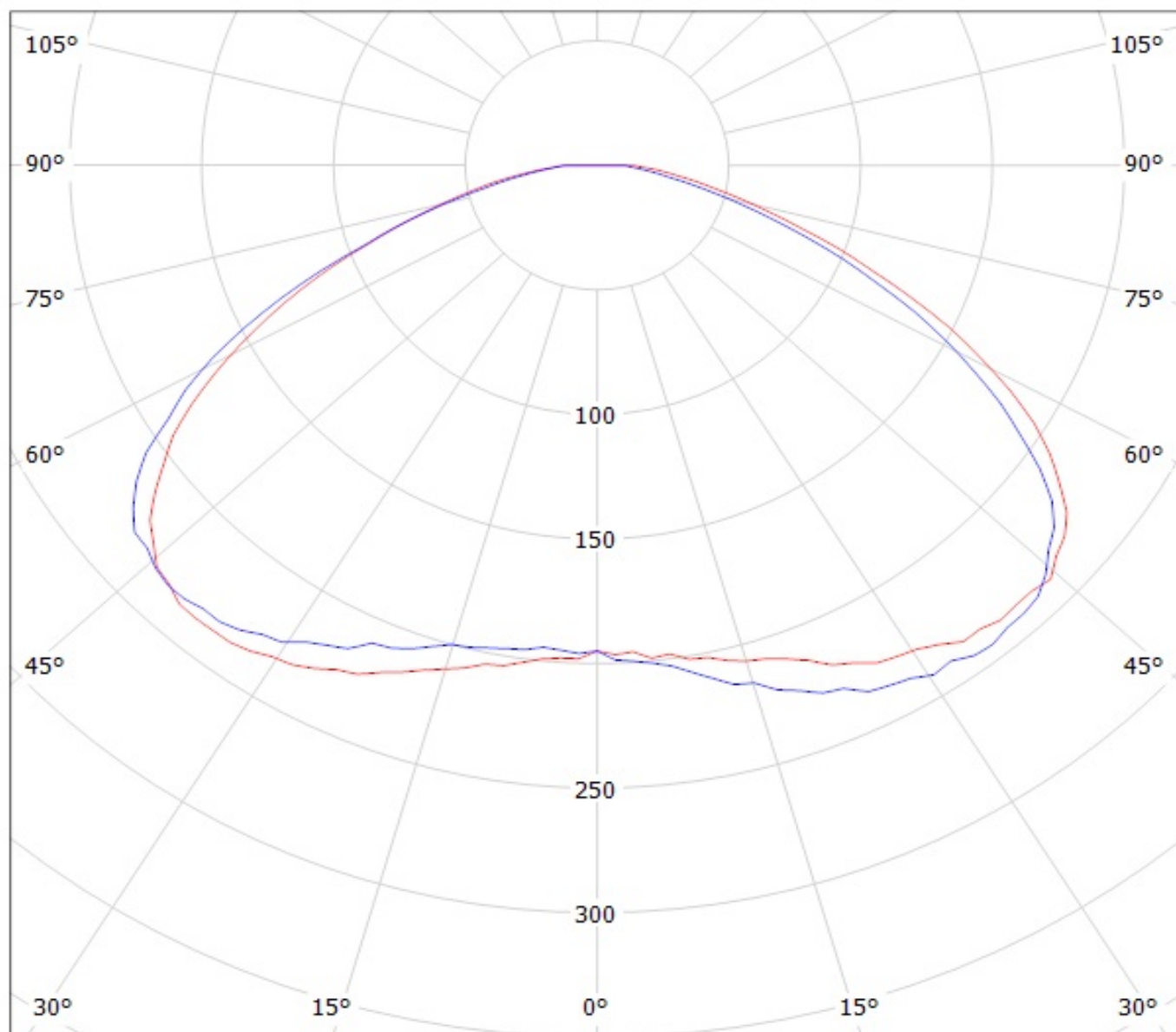
Luminaire: LEDiL Oy C13023_STRADA-C2-CLIP Eff.90.9%
Lamps: 1 x Nichia NS9x383 (107.656lm@250mA)



Luminaire: LEDiL Oy C13023_STRADA-C2-CLIP_(PSL440)
Lamps: 1 x Citizen_PSL440_256.584lm@250mA_P=2.86745W_I=0.250A



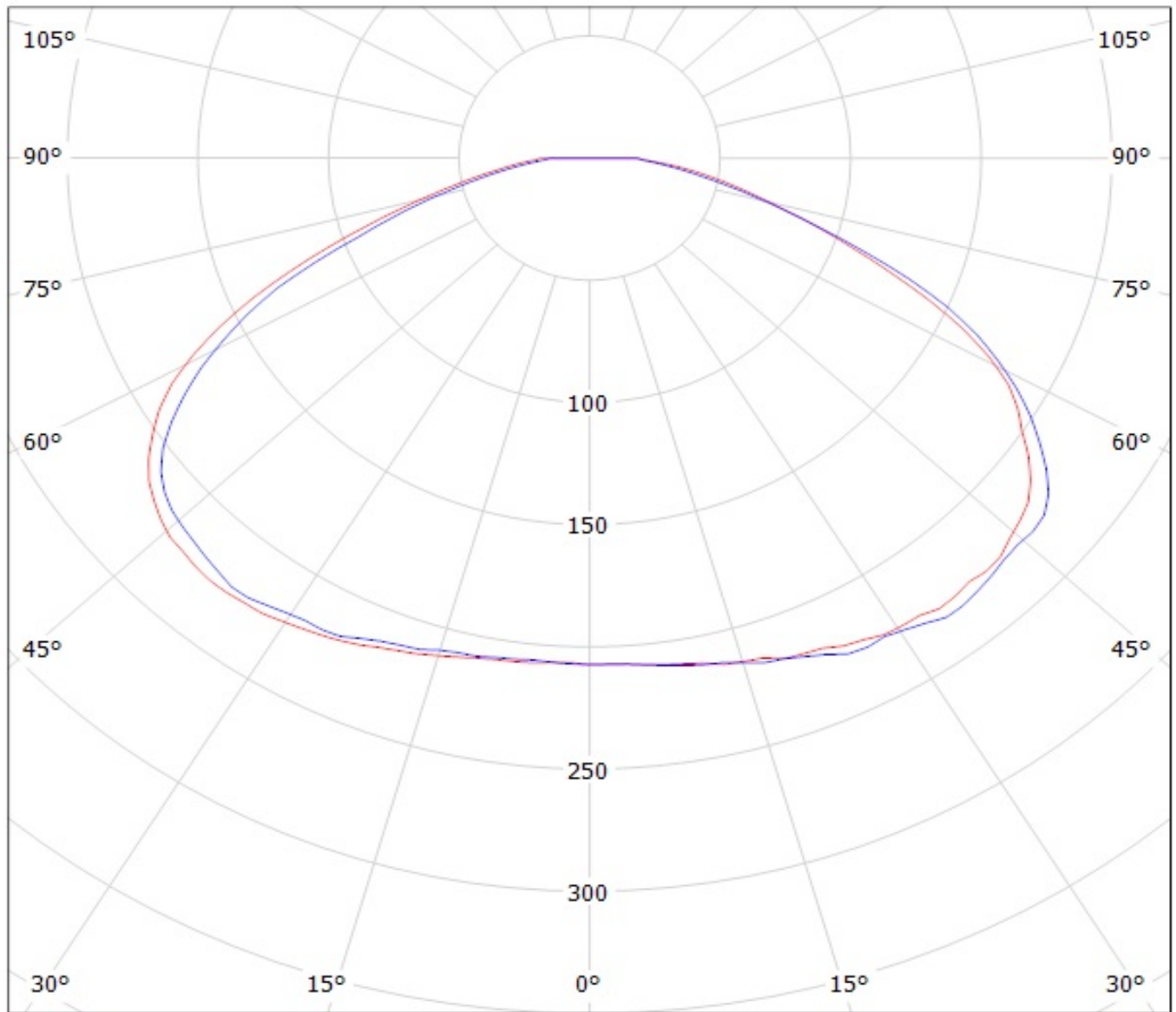
Luminaire: Ledil Oy C13023_STRADA_C2_CLIP (Cree XM-L 92lm @ 250mA) Efficiency=93%
Lamps: 1 x Cree XM-L 92lm @ 250mA



cd/klm

— C0 - C180 — C90 - C270

Luminaire: LEDil Oy C13023_STRADA-C2-CLIP_(XM_L2) Efficiency=91%
Lamps: 1 x Cree XM-L2 (XMLBWT-0-7B4-T30-0L-0001) 91lm @ 250mA CCT=3200K P=0.7W I=250mA

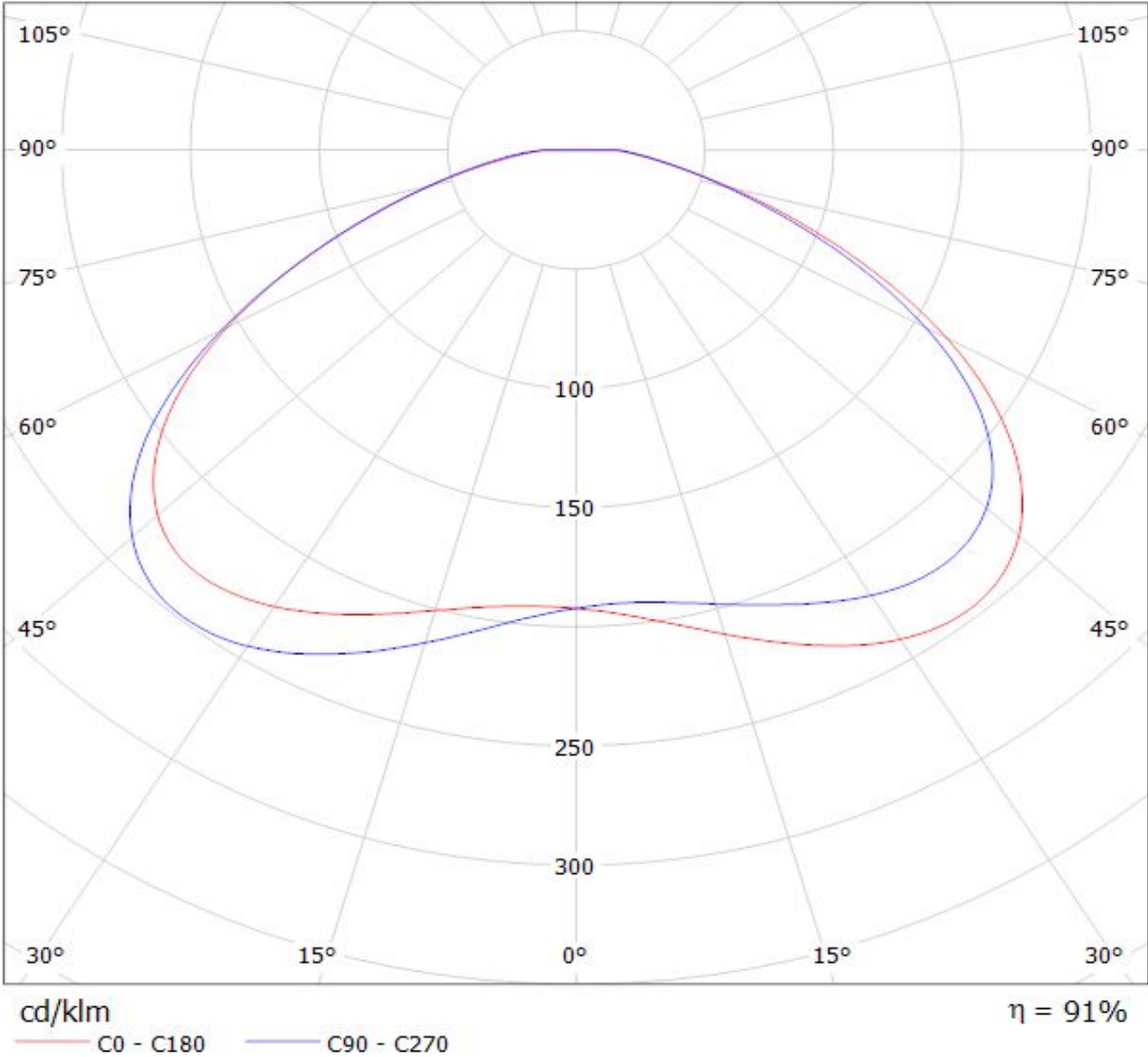


cd/klm

— C0 - C180 — C90 - C270

Luminaire: LEDiL Oy C13023_STRADA-C2-CLIP Eff.90.9%

Lamps: 1 x Nichia NS9x383 (107.656lm@250mA)



NOTE: The typical divergence will be changed by different color, chip size and chip position tolerance. The typical total divergence is the full angle measured where the luminous intensity is half of the peak value.