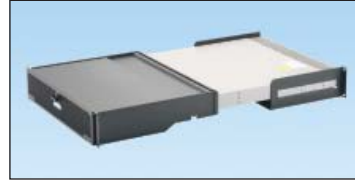


CDE2 Modular ToR Switch Inlet Duct for Net-Access™ S-Type Cabinets

specifications

The inlet duct shall be designed using CFD modeling and actual thermal lab verification, and shall be compatible with Cisco^ Nexus N2K and Catalyst 4948E. The inlet duct shall optimize thermal performance by channeling air directly from the cold aisle to the switch inlet decreasing operating temperature. The passive inlet duct shall enable higher temperature set points in the data center resulting in reduced energy costs. The modular duct shall be capable of being installed in retro-fit applications and allow access to fan and power supply modules without disrupting existing in-cabinet equipment and cabling.



technical information

Overall dimensions: CDE2: 29.0"L x 19.0"W x 3.5"H (737mm x 449mm x 88mm)

key features and benefits

Provides a cool air path to the switch	Increases energy efficiency in ToR applications and allows high density server applications
Inlet duct for uniform and low impedance flow distribution within switch: N2K-C2148T-1GE, N2K-C2224TP-1GE, N2K-C2232PP-10GE, N2K-C2248TP-1GE, WS-C4948E-F, WS-C4948E-F-S, and WS-C4948E-F-E	Verified interoperability for increased network reliability
Passive inlet duct for cool air to the switch	No additional moving parts or power required for a more reliable, efficient, economical and environmentally friendly system
Day one or two installation	Eliminates the requirement to replace or disturb existing cabinets, equipment and infrastructure for lower capital expenditures and minimized risk
Enables installation in 19 inch 4 post racks and cabinets	Can be used with existing infrastructure for lower capital expenditures
Allows for installation in cabinets with mounting depths from 24 – 30" (610 – 762mm)	Allows greater network flexibility and reliability
Allows access to power supplies and fan blades	Allows ease of maintenance
Support bracket supports switch during installation	Allows single person ease of switch installation

applications

Top of Rack (ToR) switches, such as the Cisco^ Nexus 2000 series, are designed to meet the server-access networking requirements of the virtualized data center. When deployed within server cabinets or racks, the modular duct provides a cool air

path to the air intakes of the switch. By providing a path for cool air to the switch, data center temperature set points can be raised – resulting in higher energy efficiencies and lower operating costs.

^Cisco is a registered trademark of Cisco Technology, Inc.

Inlet Duct for ToR Switching Applications

Cisco^ Inlet Duct
N2K-C2148T-1GE,
N2K-C2224TP-1GE,
N2K-C2232PP-10GE,
N2K-C2248TP-1GE,
WS-C4948E-F,
WS-C4948E-F-S, and
WS-C4948E-F-E: CDE2

Net-Access™ S-Type Cabinets for use in Hot Aisle/Cold Aisle Applications

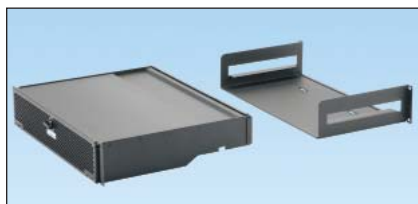
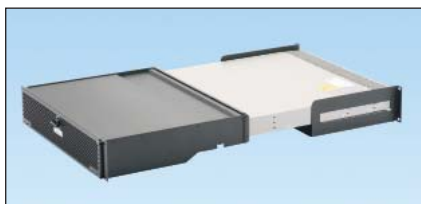
Single front perforated door, split perforated rear doors

600mm W x 42 RU x 1067mm D:	S621*^†
600mm W x 45 RU x 1067mm D:	S651*^†
600mm W x 48 RU x 1067mm D:	S681*^†
600mm W x 42 RU x 1219mm D:	S622*^†
600mm W x 45 RU x 1219mm D:	S652*^†
600mm W x 48 RU x 1219mm D:	S682*^†
700mm W x 42 RU x 1067mm D:	S721*^
700mm W x 45 RU x 1067mm D:	S751*^
700mm W x 48 RU x 1067mm D:	S781*^
700mm W x 42 RU x 1219mm D:	S722*^
700mm W x 45 RU x 1219mm D:	S752*^
700mm W x 48 RU x 1219mm D:	S782*^
800mm W x 42 RU x 1067mm D:	S821*^
800mm W x 45 RU x 1067mm D:	S851*^††
800mm W x 48 RU x 1067mm D:	S881*^
800mm W x 42 RU x 1219mm D:	S822*^
800mm W x 45 RU x 1219mm D:	S852*^
800mm W x 48 RU x 1219mm D:	S882*^

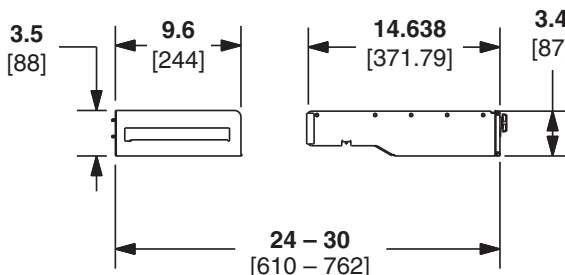
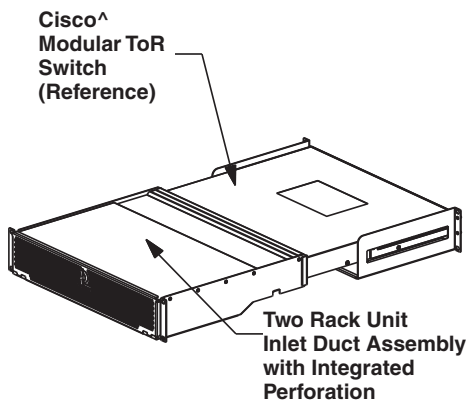
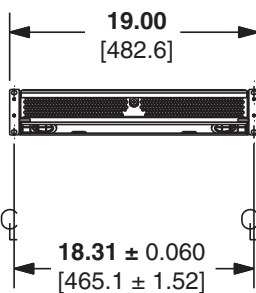
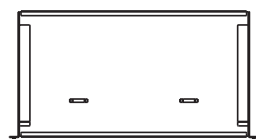
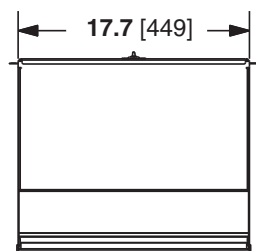
Accessories

D-ring kit for full length POU bracket 25mm (1 inch) deep:	S1DR
D-ring kit for full length POU bracket 60mm (2.4 inch) deep:	S2DR
L-ring kit for full length POU bracket 40mm (1.6 inch) deep:	S1LR
L-ring kit for full length POU bracket 70mm (2.8 inch) deep:	S2LR

CDE2 Modular ToR Switch Inlet Duct for Net-Access™ S-Type Cabinets



CDE2



Accessories

45 RU 1070mm split/hinged side panel – black:	S51SPH
45 RU 1070mm split/hinged side panel – white:	S51SPHW
45 RU 1200mm split/hinged side panel – black:	S52SPH
45 RU 1200mm split/hinged side panel – white:	S52SPHW
Casters:	SCSTR4
45 RU finger kit – 100mm (4") long:	SN15F
45 RU finger kit – 150mm (6") long:	SN25F
Cool Boot® Cabinet Top Air Sealing Fitting for 6.5 x 6.5 cabinet top opening:	CTGN6X6
Cool Boot® Cabinet Top Air Sealing Fitting for 3.5 x 5 cabinet top opening:	CTGN3X5
Cool Boot® Cabinet Top Air Sealing Fitting for 1 x 5 cabinet top opening:	CTGN1X5
Cabinet top cable protection bezel for 6.5 x 6.5 cabinet top opening:	CTCN6X6
Cabinet top cover and cable protection bezel for 3.5 x 5 cabinet top opening:	CTCN3X5
Cabinet top cover and cable protection bezel for 1 x 5 cabinet top opening:	CTCN1X5

*Indicates Net-Access™ S-Type Cabinet. Replace * with: 1 = 1 side panel, 2 = 2 side panels, or 9 = no side panels.

^Indicates optional colors. Replace ^ with: B = Black or W = White.

†Add suffix P to the end of the part number for Zero RU QuickNet™ Vertical Patching Rails.

††Add suffix F to the end of the part number for cable management.

^Cisco is a registered trademark of Cisco Technology, Inc.

Dimensions are in inches. [Dimensions in brackets are metric].

WORLDWIDE SUBSIDIARIES AND SALES OFFICES

PANDUIT CANADA
Markham, Ontario
cs-cdn@panduit.com
Phone: 800.777.3300

PANDUIT EUROPE LTD.
London, UK
cs-emea@panduit.com
Phone: 44.20.8601.7200

PANDUIT SINGAPORE PTE. LTD.
Republic of Singapore
cs-ap@panduit.com
Phone: 65.6305.7575

PANDUIT JAPAN
Tokyo, Japan
cs-japan@panduit.com
Phone: 81.3.6863.6000

PANDUIT LATIN AMERICA
Guadalajara, Mexico
cs-la@panduit.com
Phone: 52.33.3777.6000

PANDUIT AUSTRALIA PTY. LTD.
Victoria, Australia
cs-aus@panduit.com
Phone: 61.3.9794.9020

For a copy of Panduit product warranties, log on to www.panduit.com/warranty

For more information

Visit us at www.panduit.com

Contact Customer Service by email: cs@panduit.com
or by phone: 800.777.3300 and reference RKSP105



©2012 Panduit Corp.
ALL RIGHTS RESERVED.
RKSP105--WW-ENG
10/2012