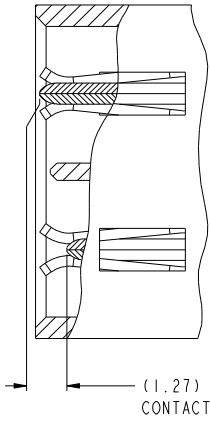
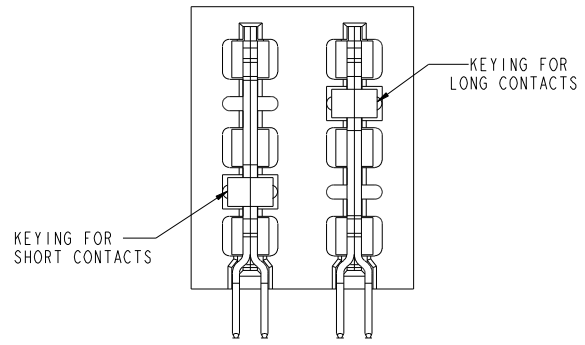
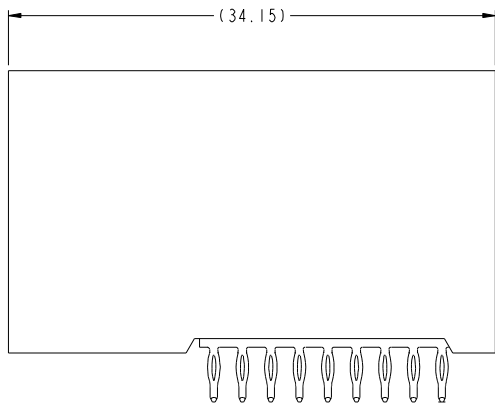
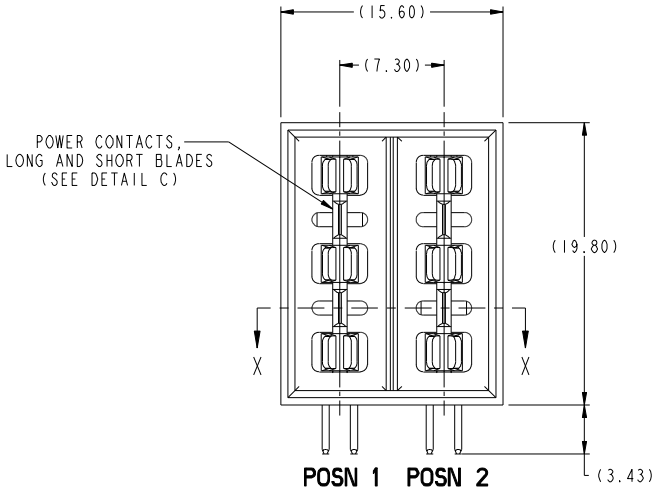
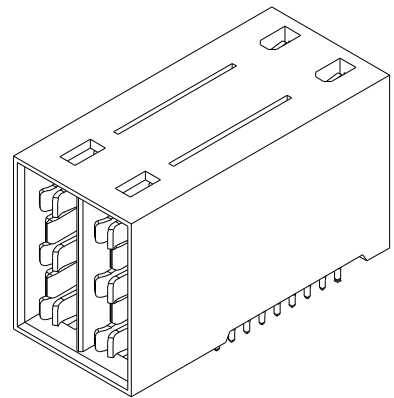
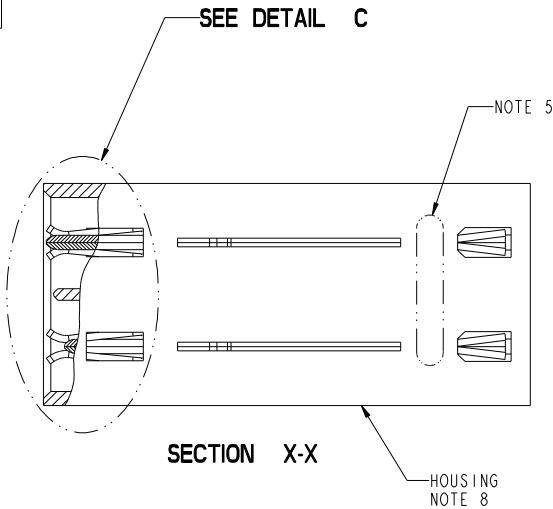


PART NUMBER	FIRST MATE (LONG) CONTACT POSN	SECOND MATE (SHORT) CONTACT POSN	TAIL TYPE
10078770-001LF	NONE	POSN 1 & 2	PRESS-FIT
10078770-002LF	POSN 1	POSN 2	
10078770-003LF	POSN 1 & 2	NONE	



**DETAIL C**  
SCALE 6:1  
POWER MATING SEQUENCE  
(SEE TABLE)



**10078770-002 SHOWN**

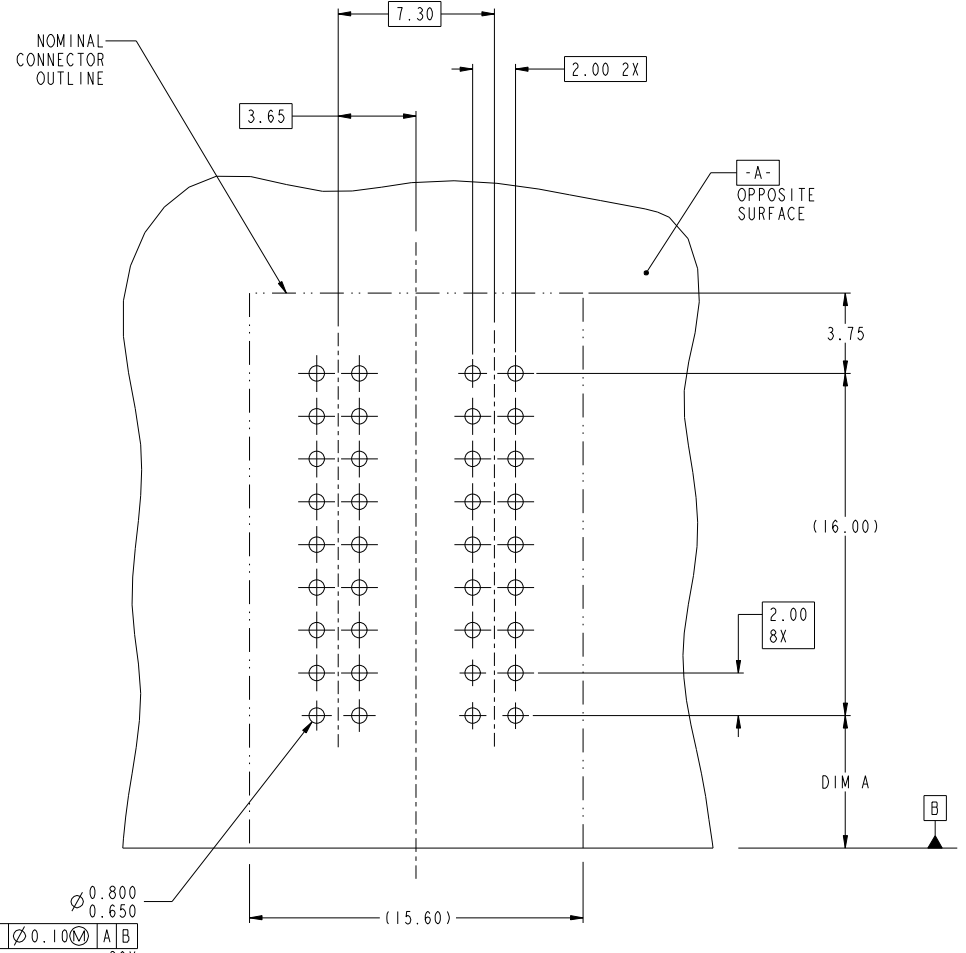
Copyright FCI.

www.fciconnect.com				surface -	tolerance std	projection	MM
				ASME Y14.5	ASME Y14.5	ASME Y14.5	
				TOLERANCES UNLESS OTHERWISE SPECIFIED			
Dr	W. J. SWAIN	2007-06-04		ANGULAR	LINEAR	size	Scale
Eng	W. J. SWAIN	2007-06-04		0. x	±.3	A2	1:1
Chr	W. J. SWAIN	2007-06-04		0° ±2"	0. xx	±.10	
Appr	-	-		0. xxx	±.050	ECN	-
rev	ecn no	dr	date	Product family		HCI	Spec ref
A	V09-0207	TH	2009-04-29				
B	V09-0213	TH	2009-05-05				
C	DG10-0076	WD	2010-02-22				
				FCI		ASSEMBLY, HEADER, R/A, 2 POSN ISOLATED POWER CONTACT	
				catalog no		10078770	
						CUSTOMER	
						sheet 1 of 2	

TOP LAYER DESCRIPTION	TABLE 1 (HCI POWER) PLATED THROUGH-HOLE REQUIREMENTS							
	DRILLED HOLE DIAMETER	COPPER THICKNESS	TIN-LEAD THICKNESS	NICKEL THICKNESS	GOLD THICKNESS	TIN THICKNESS	SILVER THICKNESS	FINISHED HOLE DIAMETER
TIN-LEAD	0.81-0.86 (0.85 DRILL)	0.025 - 0.050	0.005 - 0.015	--	--	--	--	0.65 - 0.80
IMMERSION TIN	0.81-0.86 (0.85 DRILL)	0.025 - 0.050	--	--	--	0.9 - 1.5um	--	0.70 - 0.80
IMMERSION SILVER	0.81-0.86 (0.85 DRILL)	0.025 - 0.050	--	--	--	--	0.15 - 0.65um	0.70 - 0.80
COPPER (SEE NOTE 9)	0.81-0.86 (0.85 DRILL)	0.025 - 0.050	--	--	--	--	--	0.70 - 0.80
GOLD	0.81-0.86 (0.85 DRILL)	0.025 - 0.050	--	0.003 - 0.007	FLASH UP TO 0.0002	--	--	0.69 - 0.80

NOTES:

- CONNECTOR MATERIALS:  
HOUSING: HIGH TEMPERATURE THERMOPLASTIC, BLACK  
UL 94V-0 COMPLIANT  
CONTACTS: HIGH PERFORMANCE COPPER ALLOY
- CONTACT FINISH (Ref. GS-12-380 SECTION 5.2)
- PRODUCT SPECIFICATION: GS-12-380.
- APPLICATION SPECIFICATION: GS-20-070.
- PRODUCT MARKING (PRODUCT NUMBER & DATE CODE) ON HOUSING IN AREA SHOWN.
- MINIMUM NOMINAL PCB THICKNESS: 1.6mm
- PACKAGING MEETS FCI SPECIFICATION GS-14-1194
- HOUSING COMPONENT WILL WITHSTAND EXPOSURE TO 260°C PEAK TEMPERATURE FOR 60 SECONDS IN A CONVECTION, INFRA-RED, OR VAPOR PHASE REFLOW OVEN.
- COPPER PLATING THICKNESS IN CENTER OF VIA-HOLE CAN BE NO MORE THAN 0.003 LESS THAN OTHER AREAS.
- ALL HOLE SIZES ARE FINISHED HOLE SIZES UNLESS OTHERWISE NOTED.



RECOMMENDED PCB LAYOUT  
COMPONENT SIDE  
NOTE 6

DIM A	DISTANCE FROM BOARD TO BOARD AT FULLY MATED POSITION (NOMINAL)	PRODUCT LINE APPLICATION
8.70 mm	10.0 mm	Metral High Speed
6.20 mm	12.5 mm (H.M.)	Airmax VS,Zipline
2.20 mm	16.5 mm	XCede

FCI	ASSEMBLY, HEADER, R/A,	10078770	Rev. C
	2 POSN ISOLATED POWER CONTACT	CUSTOMER	sheet 2 of 2