

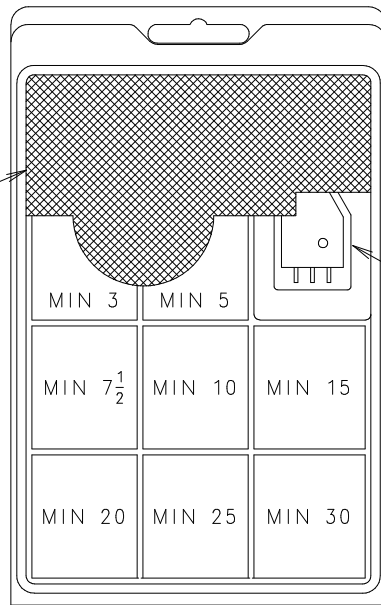
INTERNAL PART NUMBER	CATALOG NUMBER	UPC CODE	DESCRIPTION
00940462Z	094462	0 79458 02845	MINI FUSE SUPER VALUE BOX

PLACE GRAPHICS INSERT 896-364, ALONG WITH V-PACKS (SEE B/M), IN CLAM SHELL 896-358. POSITION FUSE TESTER/PULLER B0970019Z WITH DIODE FACING OUT AS SHOWN IN DETAIL "A". CLOSE LID OF CLAM SHELL AND TAPE CLOSED USING TAPE 088272. (NOTE: TAPE FULL FRONT AND WRAP APPROX. 1 1/2" ON BACK SIDE.)

PACK 5 FILLED CLAM SHELL ASSORTMENTS IN CARTON 896-362 AND CLOSE. LABEL WITH COMPUTER GENERATED LABEL 914-020, PRINTED TO GENERAL LABEL SPECIFICATION LS-000001.

PACK (12) 5 PACK CARTONS INTO 580324 CARTON. CLOSE AND SEAL WITH TAPE 088120. LABEL WITH COMPUTER GENERATED LABEL 914-183 PRINTED TO GENERAL LABEL SPECIFICATION LS-000023.

NOTE: IF PACKED AT LITTELFUSE AFFIX COMPUTER GENERATED LABEL 914-796. PRINTED TO GENERAL LABEL SPECIFICATION LS-000003 TO ONE END.



DETAIL "A"

GRAPHICS INSERT  
896-364

FUSE TESTER/PULLER  
B0970019Z

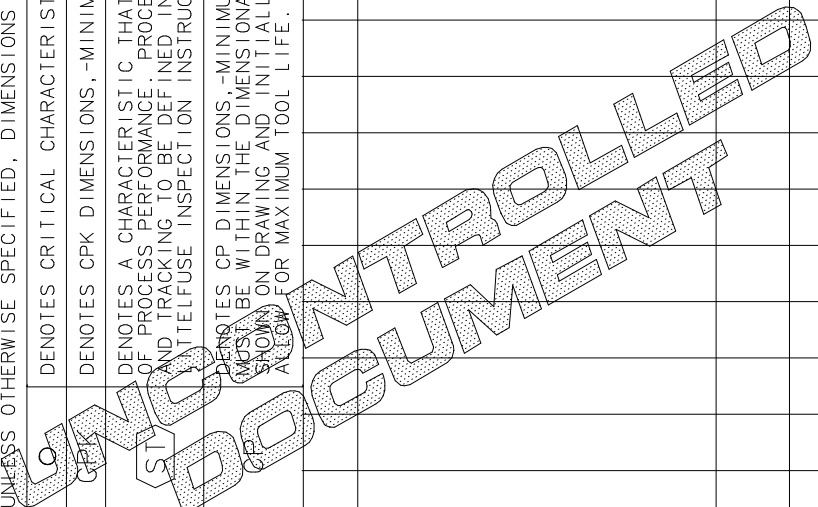
15	914-183	LABEL	16.670	EAD
14	914-020	LABEL, UPC	200	EAD
13	580324	CARTON	16.670	EAD
12	896-362	CARTON	200	EA
11	896-358	CLAM SHELL	1000	EA
10	896-364	GRAPHICS INSERT	1000	EA
9	B0970019Z	FUSE TESTER/PULLER	1000	EA
8	0MIN030.VX010	30 AMP MINI FUSE	5000	EA
7	0MIN025.VX010	25 AMP MINI FUSE	5000	EA
6	0MIN020.VX010	20 AMP MINI FUSE	5000	EA
5	0MIN015.VX010	15 AMP MINI FUSE	5000	EA
4	0MIN010.VX010	10 AMP MINI FUSE	5000	EA
3	0MIN07.5VX010	7.5 AMP MINI FUSE	5000	EA
2	0MIN005.VX010	5 AMP MINI FUSE	5000	EA
1	0MIN003.VX010	3 AMP MINI FUSE	5000	EA
NO	COMPONENT NO	DESCRIPTION	QTY/M	U/M

BILL OF MATERIAL

MATERIAL SPEC		FINISH	
DRW	MP	DATE	SCALE
CHK		DATE	SUPER DRW
APPD		DATE	RAW STK WT
1	9	18	
2	10	19	
3	12	20	
4	13	21	
5	14	23	
6	15	33	
7	16	43	
8	17	53	
TOLERANCE UNLESS OTHERWISE SPECIFIED TWO PLACE DEC ±.01 FRACTION ± THREE PLACE DEC ±.005 ANGULAR ±1°			
TITLE			
MINI FUSE SUPER VALUE BOX			

LTR	REVISION	CHK	APD
B	39204B-REDRAWN IN CAD, CHG P/N FROM .V TO .VX020 IN BOM ITEMS 1 THRU 8 6/26/98 MDP		
C	80750C-ADD CHART AND NOTE 09/12/00 PJM		
D	81868B-CHG 0MINXXX.VX020 TO 0MINXXX.VX010 1/31/02 PJM		
E	82240B-CHG 896-363 TO 896-364 ON NOTE, ADD 914-183 TO BOM 06/24/02 PJM		
F	000885EC-CHG GRAPHIC INSERT IN NOTE FROM 896-363 12/23/08 DHM		

UNLESS OTHERWISE SPECIFIED, DIMENSIONS DO NOT INCLUDE PLATING.  
 DENOTES CRITICAL CHARACTERISTICS.  
 DENOTES CPK DIMENSIONS, -MINIMUM CPK VALUE  
 DENOTES A CHARACTERISTIC THAT PROVIDES AN INDICATION OF PROCESS PERFORMANCE. PROCEDURE FOR MEASUREMENT AND TRACKING TO BE DEFINED IN LITTELFUSE INSPECTION INSTRUCTIONS.  
 DENOTES CP DIMENSIONS, -MINIMUM CP VALUE MUST BE WITHIN THE DIMENSIONAL LIMITATIONS SHOWN ON DRAWING AND INITIALLY LOCATED TO ALLOW FOR MAXIMUM TOOL LIFE.



REVISION F 00940462Z  
 DRAWG. NO. 00940462Z  
 FINAL  
 Littelfuse  
 DES PLAINES, ILLINOIS 60016