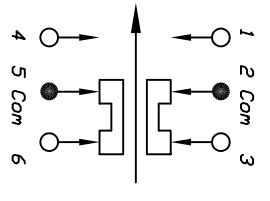
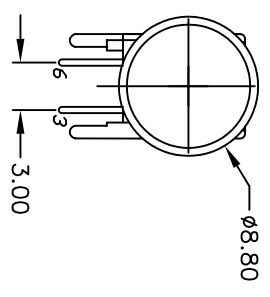
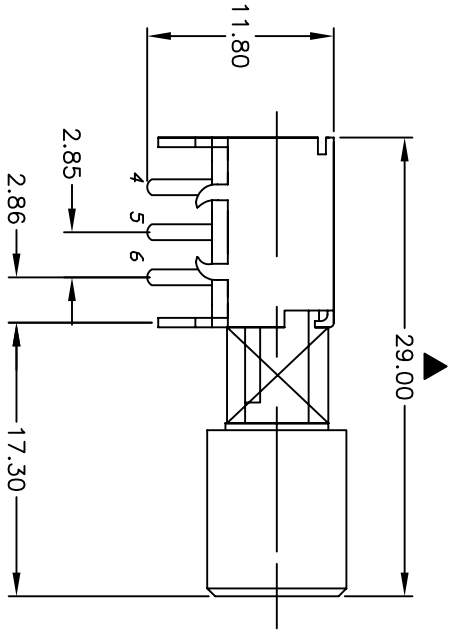


RECOMMEND P.C.B. HOLES



CIRCUIT: DPDT
CONTACT CONFIGURATION

- NOTES:
1. ALL DIMENSIONS IN MM
 2. GENERAL TOLERANCE: X.X=±0.4
X.XX=±0.25
 3. TERM. NOS. FOR REFERENCE ONLY.
 4. RATING: DC 30V, 0.3A
 5. OPERATING FORCE: 330±150gf
 6. TRAVEL: FULL 3.5mm; LOCK 2.5mm
 7. ▲ DENOTES CRITICAL PARAMETER

E-SWITCH®

B	15621	NEW TOOLING FOR CAP	12/20/05	PH
A	12925	RELEASED FOR PRODUCTION	3/19/03	AR
REV.	ECN NO.	DESCRIPTION	DATE	CHKD

TITLE		DATE		DR		DWG		REV	
LC2255EENPTAGGRY		3/19/03		AR		XP0109A		B	
SCALE		DATE		DR		DWG		REV	
2:1		3/19/03		AR		XP0109A		B	

THE INFORMATION CONTAINED IN THIS DOCUMENT IS PROPRIETARY TO E-SWITCH AND IS NOT TO BE COPIED OR TRANSFERRED