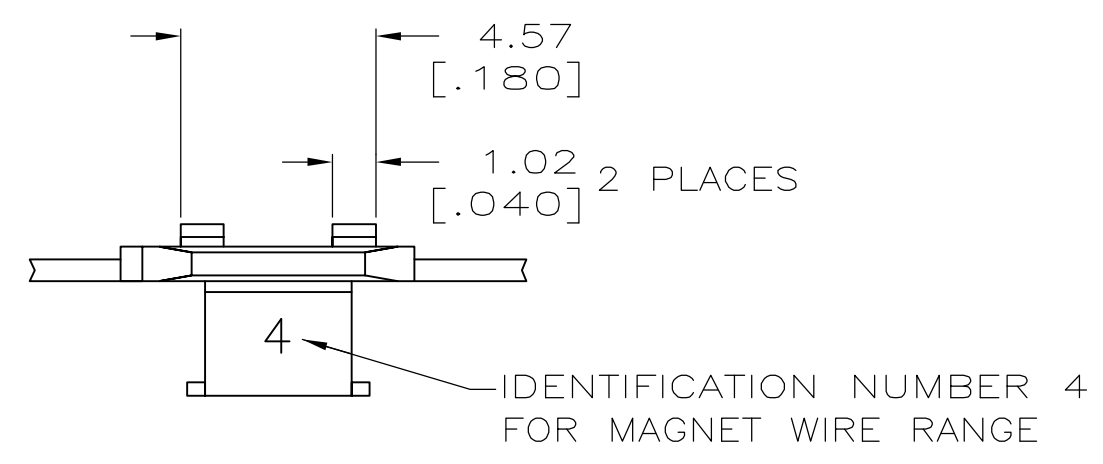
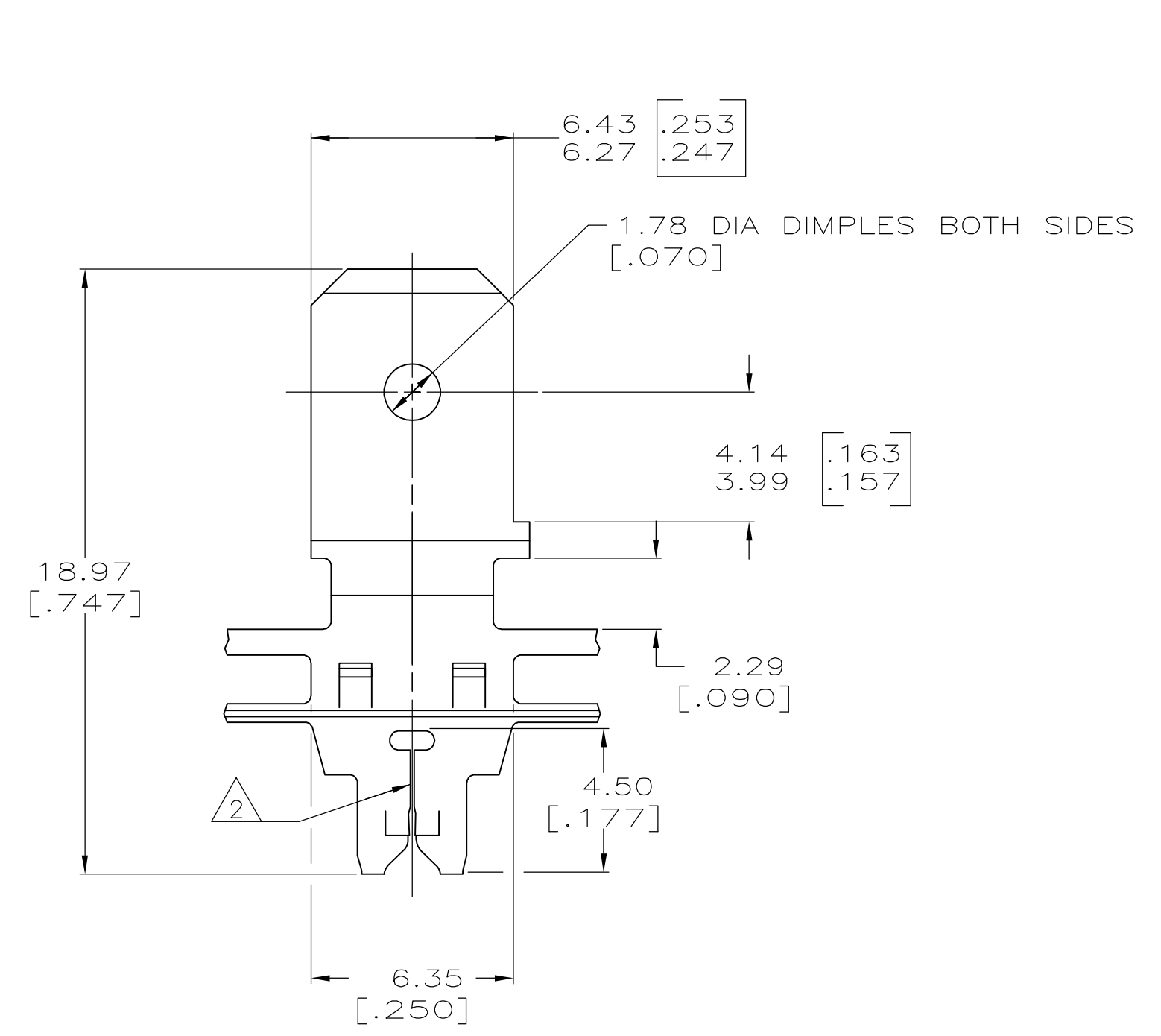
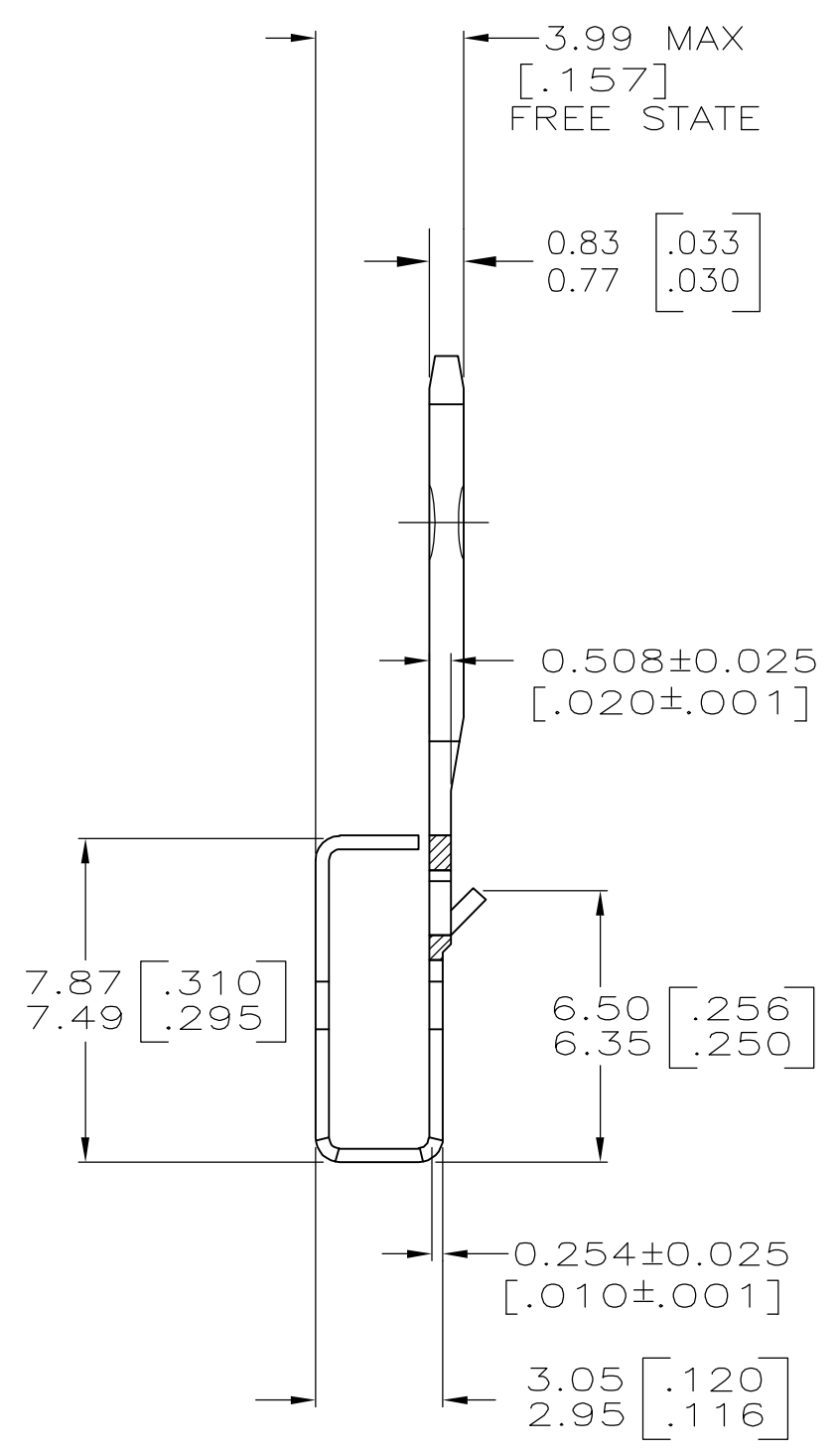
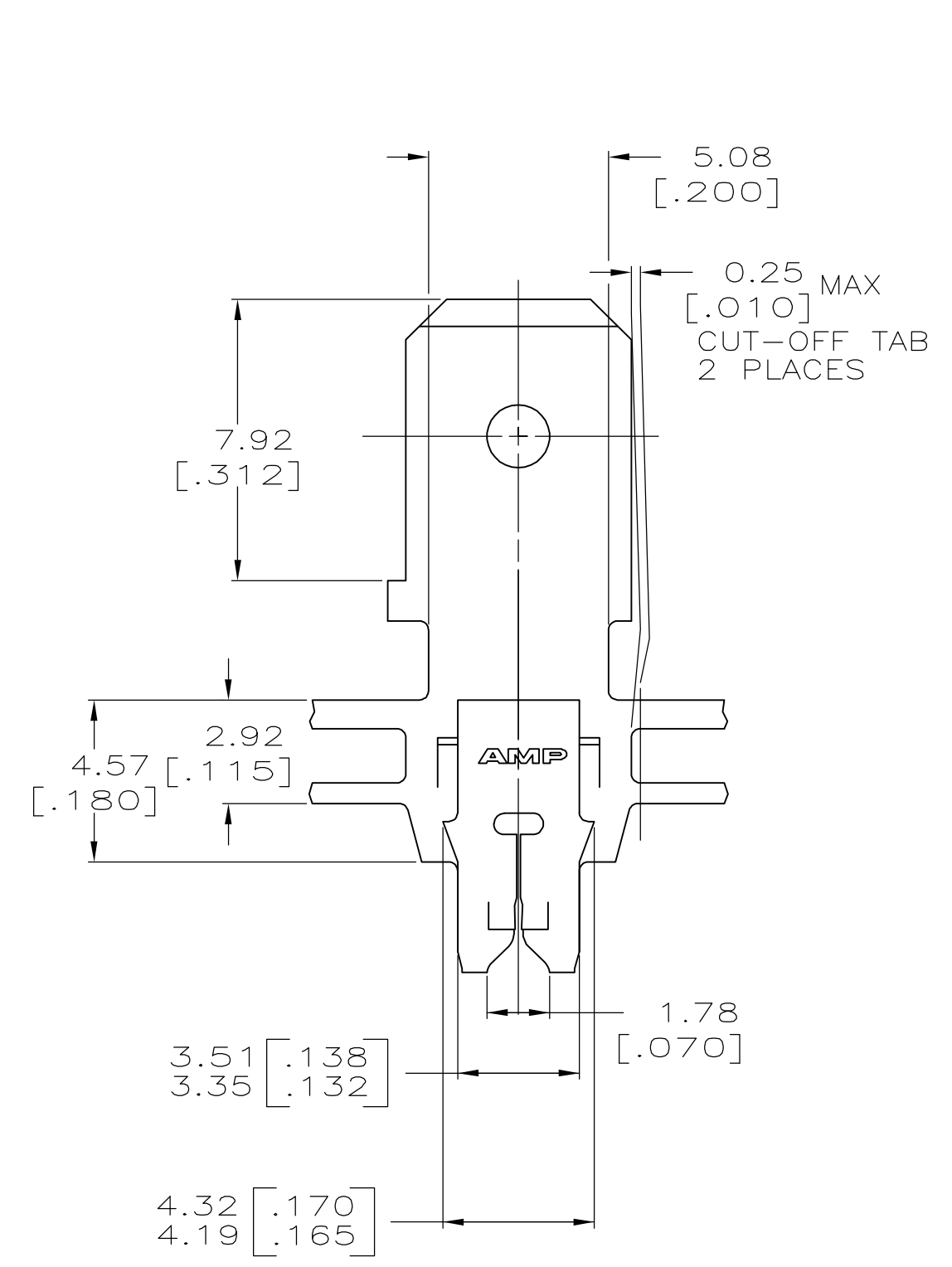


THIS DRAWING IS UNPUBLISHED. RELEASED FOR PUBLICATION
 © COPYRIGHT BY TYCO ELECTRONICS CORPORATION. ALL RIGHTS RESERVED.

LOC	DIST	REVISIONS			
P	LTR	DESCRIPTION	DATE	DWN	APVD
AF	50	J	REVISED PER ECR-06-010412	07NOV06	HMR KR



- 1 CONTINUOUS STRIP ON REELS WITH TERMINALS LOCATED ON 8.38±0.08 [.330±.003] CENTERS.
- 2 SLOT ACCEPTS 0.18-0.23mm [#33-#31] AWG COPPER MAGNET WIRE.
2 WIRES OF THE SAME SIZE MAX PER SLOT.
- 3 0.002032 [.000080] MIN TIN PLATE.



OBSOLETE	3	082 PRE-MILLED BRASS	63133-3
	7	4M PRE-MILLED BRASS	63133-2
	3	4M PRE-MILLED BRASS	63133-1
	FINISH	MATERIAL	PART NO

THIS DRAWING IS A CONTROLLED DOCUMENT.

DWN	12/AUG/94		Tyco Electronics Corporation Harrisburg, PA 17105-3608
CHK	15/AUG/94		
APVD	15/AUG/94	NAME	TAB,
		NELSON E. NEFF	6.35 [.250] FASTON™
		PRODUCT SPEC	300 SERIES MAG-MATE™
		APPLICATION SPEC	
		114-2094	
MATERIAL	FINISH	WEIGHT	SIZE CAGE CODE DRAWING NO RESTRICTED TO
SEE TABLE	SEE TABLE	-	A2 00779 C-63133 -
CUSTOMER DRAWING			SCALE 6:1 SHEET 1 OF 1 REV J