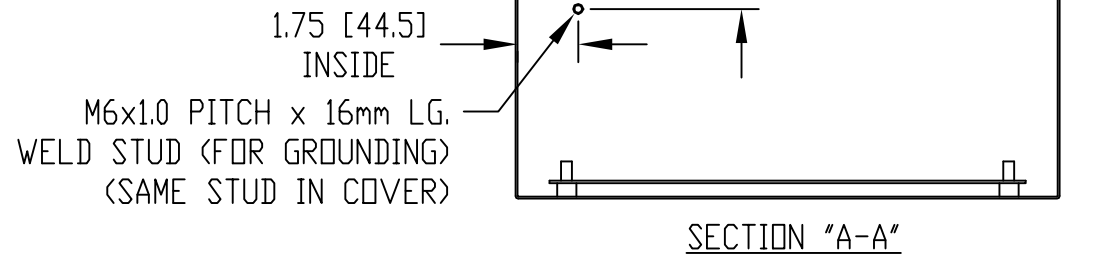


MATERIAL:
 BODY & COVER - 16 GA. [1.5mm] C.R.S.
 INTERNAL PANEL - 14 GA. [2.0mm] C.R.S.
 WALL MTG. BRKTS - 14 GA. [2.0mm] TYPE 430 STAINLESS STEEL
 STRIKER - C.R.S.
 HINGE PINS & WALL MTG. HARDWARE - TYPE 201 STAINLESS STEEL
 LATCH - ZINC DIE CAST
 GASKET - 0.38 [9.5] THK. ROGERS CORP. PORDON #4701-30-15375-04 (BLACK)
 SEALING WASHERS - BLACK NEOPRENE
 HOLE PLUGS - LIGHT GRAY NEOPRENE

FINISH:
 BODY & COVER - LIGHT GRAY SMOOTH POWDER COAT
 INTERNAL PANEL - ZINC PLATED
 WALL MOUNTING BRACKETS & HINGE PINS - NATURAL
 STRIKER - ZINC PLATED
 LATCH - CHROME PLATED



BOXES SUPPLIED WITH GROUNDING KIT THAT CONTAINS THE FOLLOWING: (1) GROUND WIRE, (4) FLAT WASHERS, (2) SPLIT LOCKWASHERS AND (2) HEX NUTS

| PART NO. | "A" | "B" | "C" | "D" | "E" | "F" | "G" | "H" | "J" | "K" | "L" | "M" |
|----------|------------|------------|------------|--------------|---------------|------------|--------------|--------------|------------|------------|------------|------------|
| SNB-3730 | 9.84 [250] | 7.87 [200] | 5.91 [150] | 5.33 [135.4] | 11.12 [282.3] | 6.42 [163] | 8.25 [209.6] | 6.28 [159.6] | 6.89 [175] | 4.92 [125] | 8.46 [215] | 5.91 [150] |
| SNB-3738 | 7.87 [200] | 5.91 [150] | 5.91 [150] | 5.33 [135.4] | 9.15 [232.3] | 4.45 [113] | 6.28 [159.6] | 4.31 [109.6] | 4.92 [125] | 2.95 [75] | 6.50 [165] | 3.94 [100] |
| SNB-3739 | 7.87 [200] | 7.87 [200] | 3.98 [101] | 3.40 [86.4] | 9.15 [232.3] | 6.42 [163] | 6.28 [159.6] | 6.28 [159.6] | 4.92 [125] | 4.92 [125] | 6.50 [165] | 5.91 [150] |
| SNB-3740 | 9.84 [250] | 9.84 [250] | 5.91 [150] | 5.33 [135.4] | 11.12 [282.3] | 8.39 [213] | 8.25 [209.6] | 8.25 [209.6] | 6.89 [175] | 6.89 [175] | 8.46 [215] | 7.87 [200] |
| SNB-3741 | 9.84 [250] | 7.87 [200] | 3.98 [101] | 3.40 [86.4] | 11.12 [282.3] | 6.42 [163] | 8.25 [209.6] | 6.28 [159.6] | 6.89 [175] | 4.92 [125] | 8.46 [215] | 5.91 [150] |