

# Customer Information Sheet

DRAWING No.: D73064-42

SHEET 2 OF 2

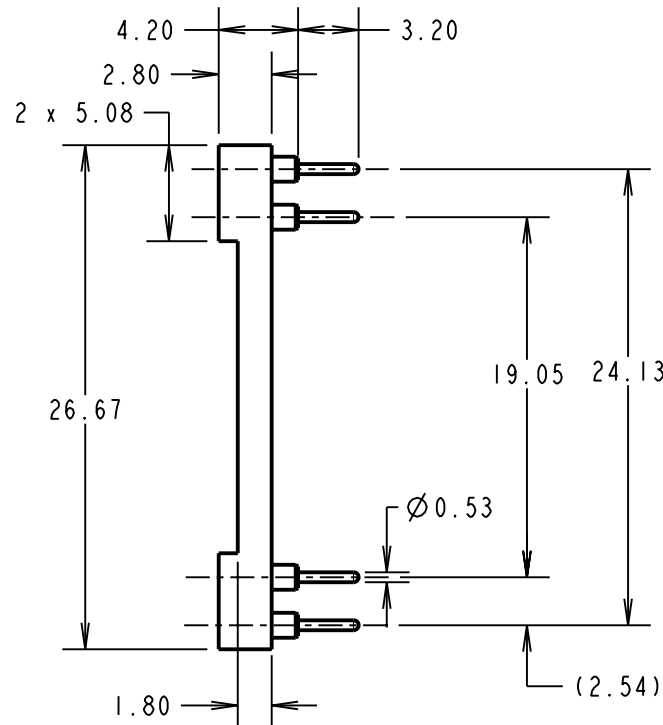
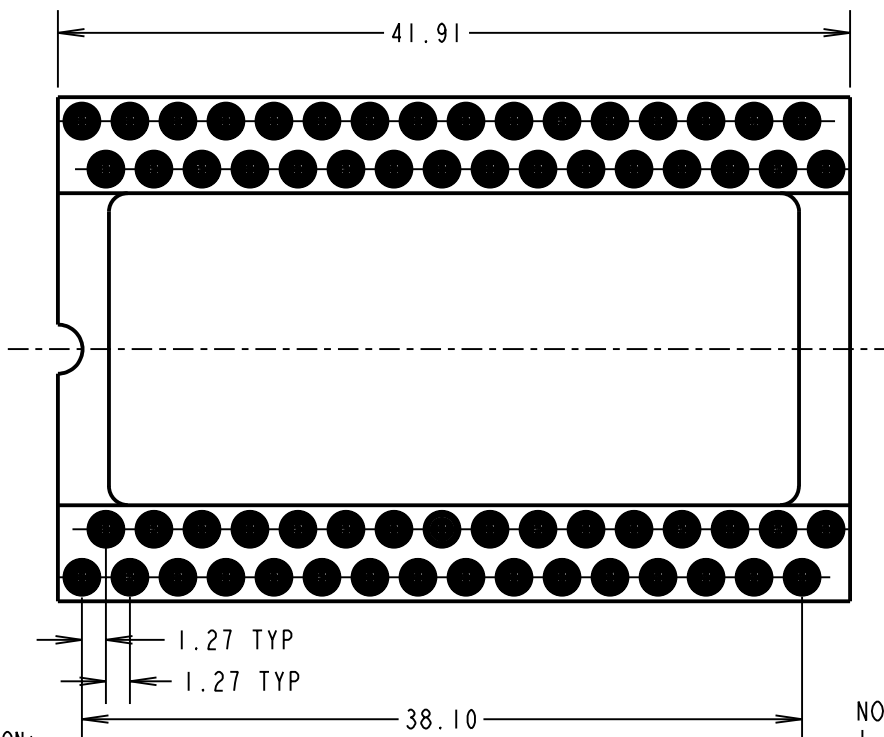
IF IN DOUBT - ASK

©

NOT TO SCALE

THIRD ANGLE PROJECTION

ALL DIMENSIONS IN mm



**SPECIFICATION:**

**MATERIAL:**  
 MOULDING = GLASS-FILLED PCT, BLACK, UL94V-0  
 CONTACT SHELL = BRASS  
 CONTACT CLIP = BERYLLIUM COPPER

**FINISH:**  
 CONTACT SHELL = 5µ 100% TIN  
 CONTACT CLIP = GOLD

**ELECTRICAL:**  
 CURRENT RATING = 1A MAX  
 VOLTAGE RATING = 100V AC, 150V DC  
 CONTACT RESISTANCE = 10 MILLIOHMS MAX  
 INSULATION RESISTANCE = 10,000 MEGOHMS MIN  
 DIELECTRIC STRENGTH = 1,000V AC MIN

**MECHANICAL:**

INSERTION FORCE = 0.6N (Ø0.46mm GAUGE)  
 WITHDRAWAL FORCE = 0.3N (Ø0.46mm GAUGE)  
 DURABILITY = 100 CYCLES MIN

**ENVIRONMENTAL:**  
 OPERATING TEMPERATURE = -55°C TO +125°C

**PACKING:**  
 TUBE

**NOTES:**

1. RECOMMENDED PCB MOUNTING HOLE SIZE = Ø0.80mm.
2. MAXIMUM PIN LENGTH = 3.70mm.
3. MAXIMUM CONTACT DEPTH = 2.40mm.
4. RECOMMENDED MATING PIN SIZE = Ø0.53-0.41mm.

ORDER CODE:

**D73064-42**

FINISH ————  
 GOLD CLIP, 100% TIN SHELL

CP	6	15.01.10	10640
NAME	ISS.	DATE	C/NOTE
APPROVED: C.PENROSE			
CHECKED: R.ADDE			
DRAWN: K. SHIER			
CUSTOMER REF.:			
ASSEMBLY DRG:			

**HARWIN**

HARWIN USA TEL: 603 893 5376 FAX: 603 893 5396 mis@harwin.com	HARWIN Europe (UK) TEL: 023 9231 4545 FAX: 023 9231 4590 mis@harwin.co.uk	HARWIN Asia TEL: +65 6 779 4909 FAX: +65 6 779 3868 mis@harwin.com.sg
--	--	--

THIS DRAWING AND ANY INFORMATION OR DESCRIPTIVE MATTER SET OUT HEREON ARE CONFIDENTIAL AND COPYRIGHT PROPERTY OF THE HARWIN GROUP AND MUST NOT BE DISCLOSED, LOANED, COPIED OR USED FOR MANUFACTURING, TENDERING OR FOR ANY OTHER PURPOSE WITHOUT THEIR WRITTEN PERMISSION.

**TOLERANCES**  
 X. = ±1mm  
 X.X = ±0.25mm  
 X.XX = ±0.10mm  
 X.XXX = ±0.01mm

ANGLES = ±5°  
 UNLESS STATED

**MATERIAL:**  
 SEE ABOVE

**FINISH:** SEE ABOVE

**S/AREA:** mm<sup>2</sup>

**TITLE:**  
 64-WAY QUAD IN LINE  
 I.C. SOCKET ASSEMBLY

**DRAWING NUMBER:**  
**D73064-42**

SHT  
 2 OF 2