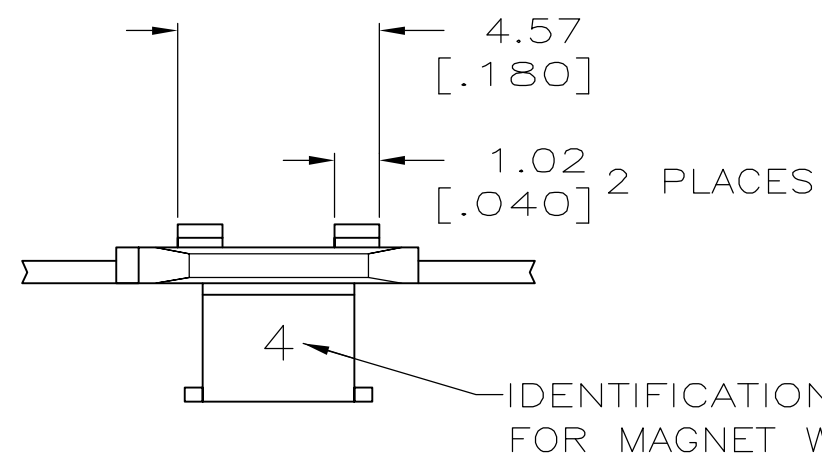
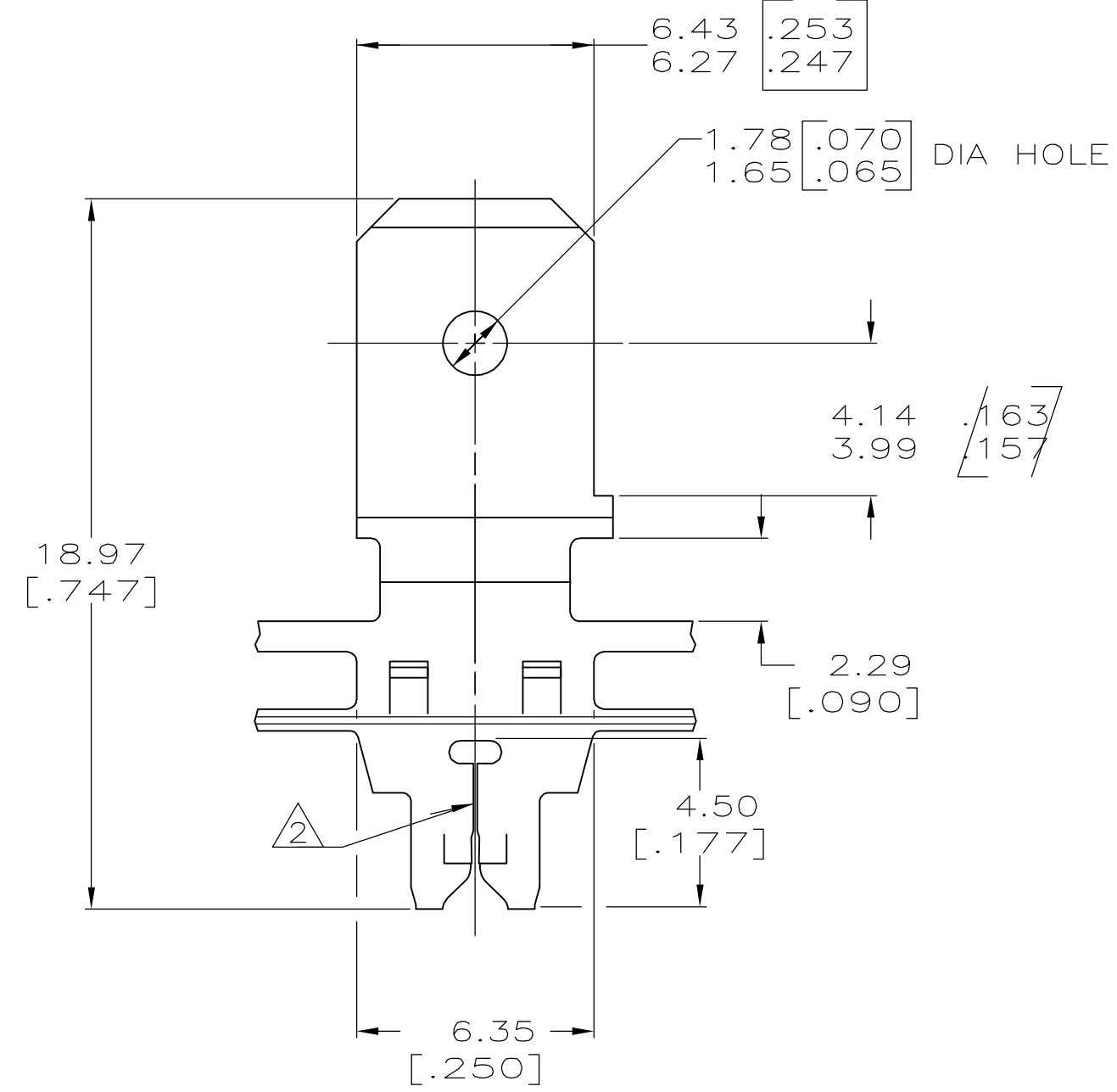
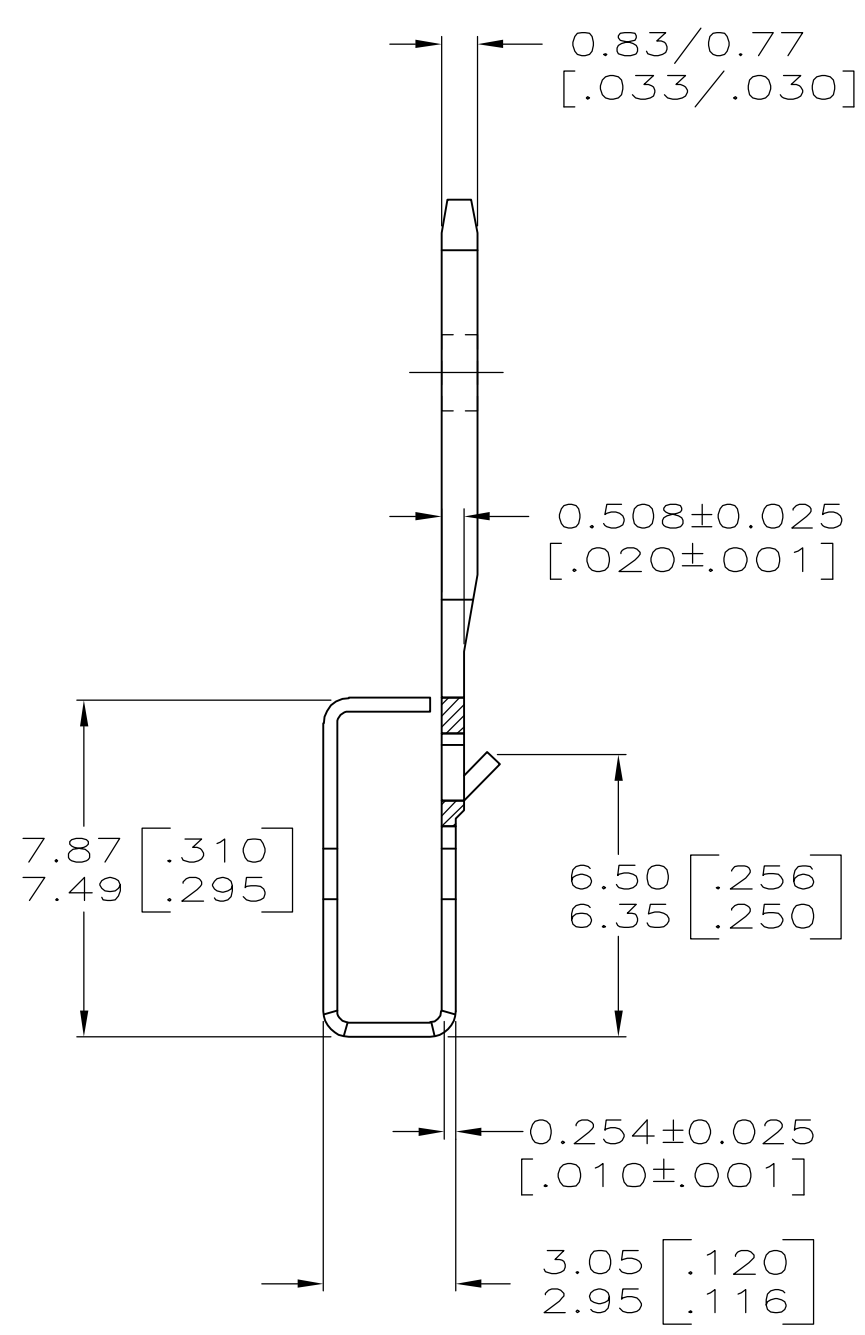
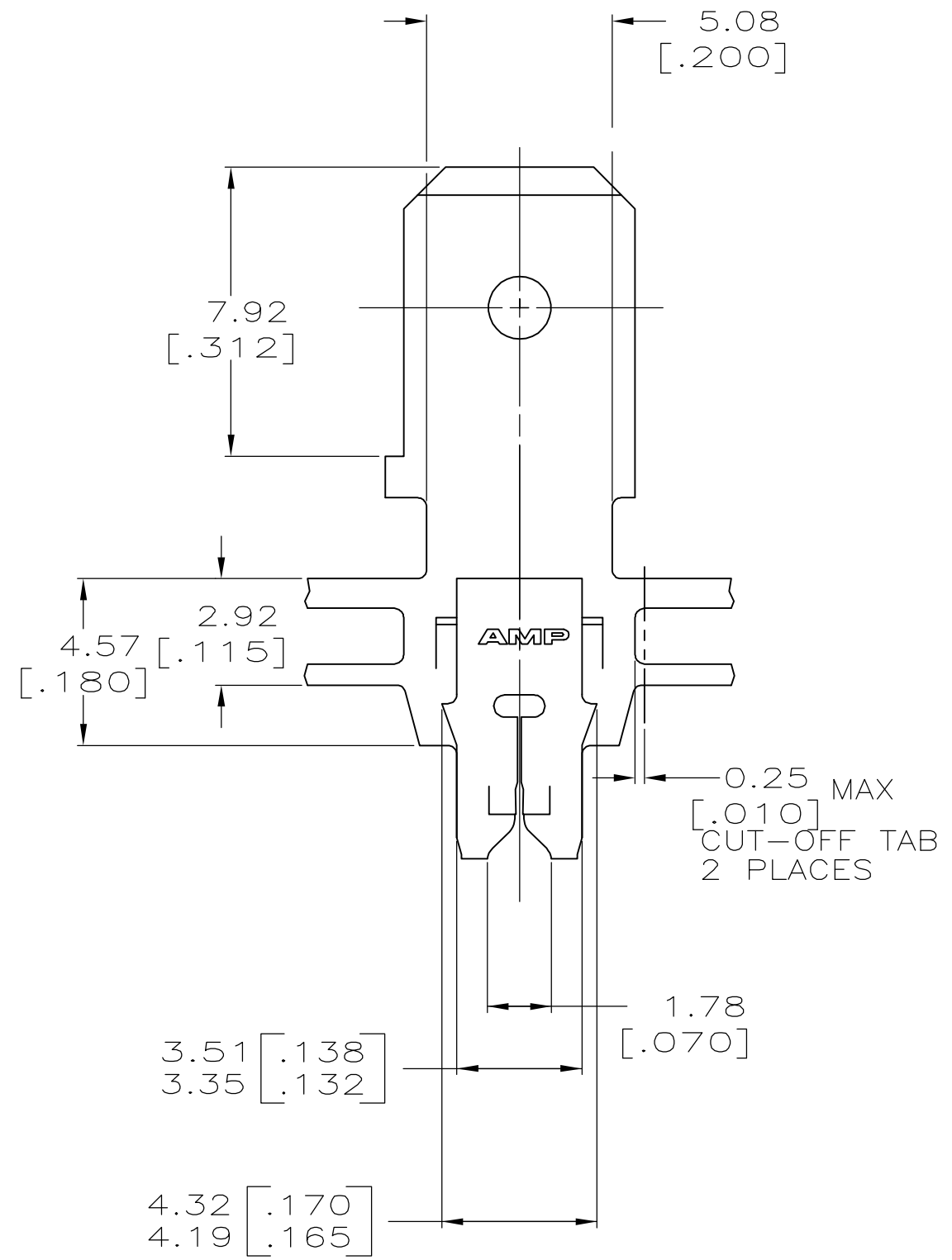


LOC		DIST		ZONE		LTR		REVISIONS		DATE	APPD
AF	50	P	F			F		REV PER ECR 06-010492	02OCT06	JR/KR	



1 CONTINUOUS STRIP ON REELS WITH TERMINALS LOCATED ON 8.38 ± 0.08 [.330 ± .003] CENTERS.
 2 SLOTTED ACCEPTS 0.18-0.23mm [#33-#31] AWG COPPER MAGNET WIRE.
 2 WIRES OF THE SAME SIZE MAX PER SLOT.



MATERIAL	PART NO
082 PRE-MILLED BRASS	63309-2
4M PRE-MILLED BRASS	63309-1

DO NOT SCALE PRINT. UNLESS SPECIFIED DIMENSIONS IN mm [INCHES] TOLERANCES ON : 2 PLC DEC ± 0.25 [.010] 3 PLC DEC ± - ANGLES ± -	DR 10/AUG/94 MICHAEL S. FEHER	AMP Incorporated Harrisburg, PA 17105-3608
	CHK 12/AUG/94 RAYMOND R. BUCHHEISTER JR	
MATERIAL SEE TABLE	APPD 15/AUG/94 NELSON E. NEFF	NAME TAB, 6.35 [.250] FASTON, MAG-MATE
	APPD 15/AUG/94 TERRY L. SHUTTER	
FINISH 0.002032 [.000080] MIN TIN PER MIL-T-10727	PRODUCT SPEC 108-2012	SIZE C 00779
	APPLICATION SPEC 114-2094	DRAWING NO C= 63309
THIS DRAWING IS A CONTROLLED DOCUMENT FOR AMP INCORPORATED. IT IS SUBJECT TO CHANGE AND THE CONTROLLING ENGINEERING ORGANIZATION SHOULD BE CONTACTED FOR THE LATEST REVISION.	WEIGHT -	SCALE 6:1
		SHEET 10F 1