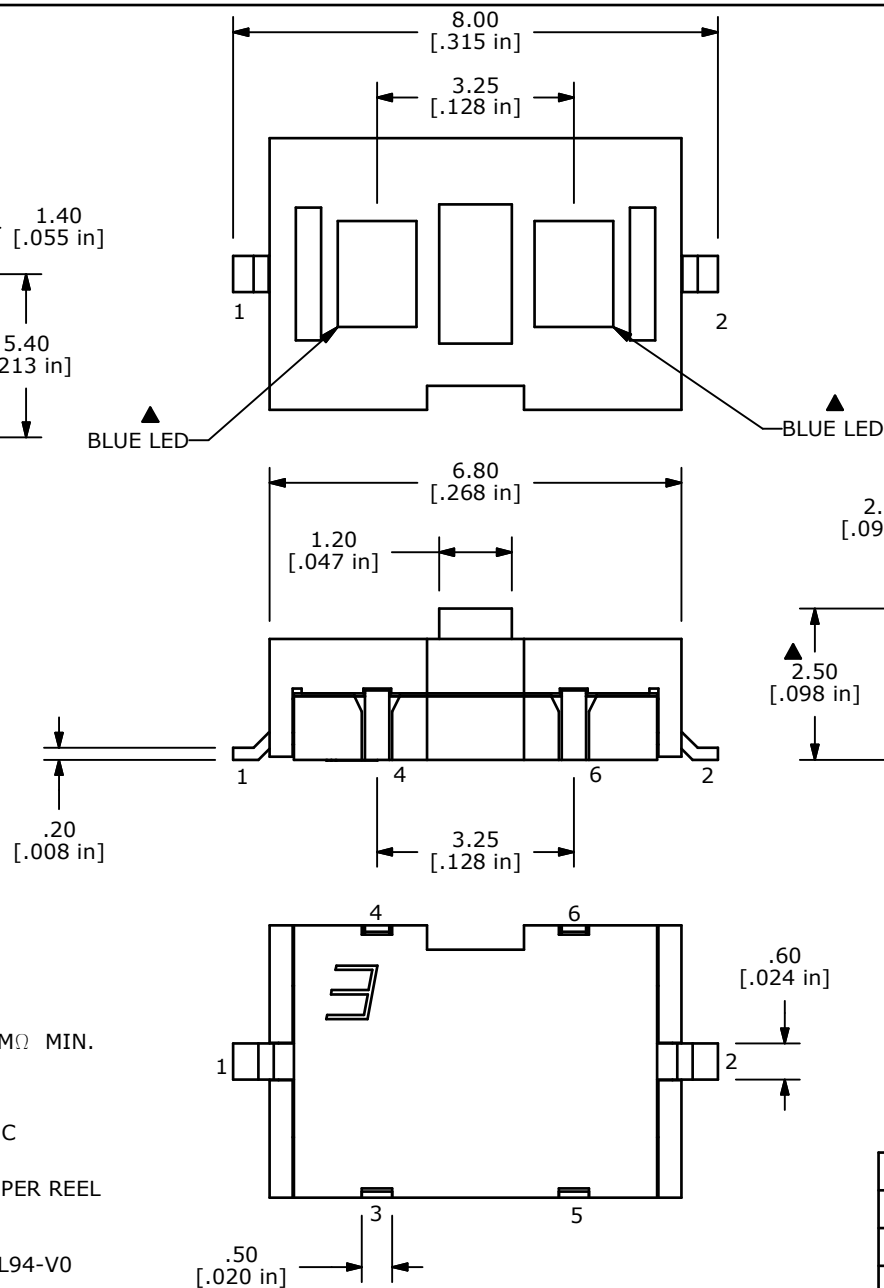
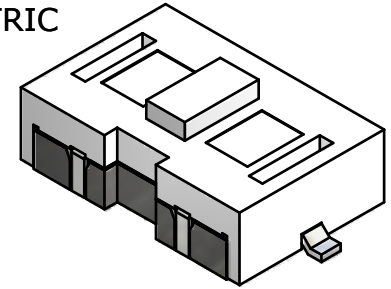


▲ CIRCUIT: OFF - (ON)

- NOTES:
1. ALL DIMENSIONS IN MM [INCH]
 2. GENERAL TOLERANCE: X.X±0.4
X.XX±0.25
 3. RATING: 12VDC, 50mA MAX.
 4. CONTACT RESISTANCE: 500mΩ MAX.
 5. INSULATION RESISTANCE: 100VDC, 100MΩ MIN.
 6. TRAVEL: 0.25 mm
 - ▲ 7. OPERATING FORCE: 160 +75/-30gf
 8. OPERATING TEMPERATURE: -20°C TO 70°C
 9. OPERATING LIFE: 30,000 CYCLES.
 10. PACKAGING: TAPE & REEL, 3000 PIECES PER REEL
 11. ▲ DENOTES CRITICAL PARAMETER
 12. 2002/95/EC (ROHS) COMPLIANT
 13. PLASTIC MATERIALS MEET OR EXCEED UL94-V0



ISOMETRIC



LED Specifications	Units	BLUE	BLUE
Forward Current	mA	30	30
Forward Voltage	V	3.5-3.8	3.5-3.8
Luminous Intensity@20mA	mcd	45	45



B	19366	ADD NOTE 13	10/19/10	BLR
A	19114	RELEASED FOR PRODUCTION	6/9/10	BLR
REV	PCR NO	DESCRIPTION	DATE	BY

TITLE TL3200AF160BBQ				
SCALE	DATE	DR	DWG	REV
8:1	10/19/2010	BLR	B200108	B

THE INFORMATION CONTAINED IN THIS DOCUMENT IS PROPRIETARY TO E-SWITCH AND IS NOT TO BE COPIED OR TRANSFERRED