

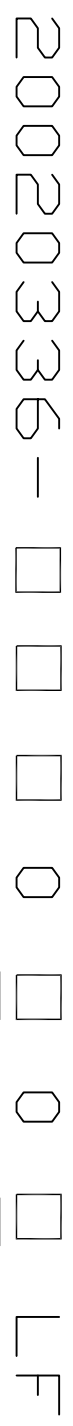
This document is the property of and embodies CONFIDENTIAL and PROPRIETARY information of FCI. No part of the information shown on this document may be used in any way or disclosed to others without the written consent of FCI. Copyright FCI.



FCIconnect.com

FCI CONFIDENTIAL

PRODUCT NUMBER
20020336-XXXXXXLF



PITCH
H : 5.08 mm

POLES
4: 4 POLES(2+2)
5: 5 POLES(2+3)
(ON CUSTOMER REQUESTED)

1 : STANDARD PRODUCT
w/ BOX PACKING
LF: DENOTED ROHS COMPATIBLE

PROPERTY TABLE		
FCI SERIES NAME	2I-508	
PITCH (mm)	5.08	
VOLTAGE RATING (VAC)	300	
CURRENT RATING (A)	16	
APPLICABLE WIRE RANGE (AWG)	SOLID	12-28
	STRANDED	18-28
OPENING CONTACT HOUSING(mm)	21x2.7	
WIRE STRIP LENGTH(mm)	6-7	
TORQUE +/-10% (Lb-in)	3.5	
SCREW	M3x0.5	
WITHSTANDING VOLTAGE (kV)	1.6	
OPERATING TEMP. (°C)	-40~+115	
SOLDERING TEMP. (°C)	250±10 (5 sec)	
POLES AVAILABLE	4/5	
SAFETY CERTIFICATE	PENDING	

SCREW CODE		
CODE	SCREW TYPE	AVAILABILITY
B	-	⊕ STANDARD

NOTES:
1. PRODUCT SPECIFICATION REFER TO FCI GS-12-625.
2. PRODUCT PACKING SPECIFICATION REFER TO FCI GS-14-1394.

3. FCI, SAFETY CERTIFICATE LOGO AND SERIES NAME TO BE SHOWN ON PRODUCT SURFACE.
4. THE PRODUCTS WHERE THE PART NUMBER END IN "LF" MEET THE EUROPEAN UNION DIRECTIVE AND OTHER COUNTRY REGULATIONS AS DESCRIBED IN GS-22-008.

mat'l. code		surface		tolerance		projection		product family	
ltr	ecn no	dr	date	ASME Y14.5	ASME Y14.5	ASME Y14.5	ASME Y14.5	TERMINAL BLOCK	TERMINAL BLOCK
A		IS	013112	tolerances unless otherwise specified	tolerances unless otherwise specified	MM	MM	TERMINAL BLOCK	TERMINAL BLOCK
				angles	X.F±0.5			FIXED HORIZONTAL WIRE INLET	sheet 1 of 3 size
				X.F±1°	X.XX±0.3			20020336	A4
				dr	X.XX±0.1			CUSTOMER Drawing	
				engr	LEIF SHEN 011112				
				chr	LEIF SHEN 011112				
				pppd	GARY HSIEH 011112				
sheet	revision	A	A	A	A				
index	sheet	1	2	3					

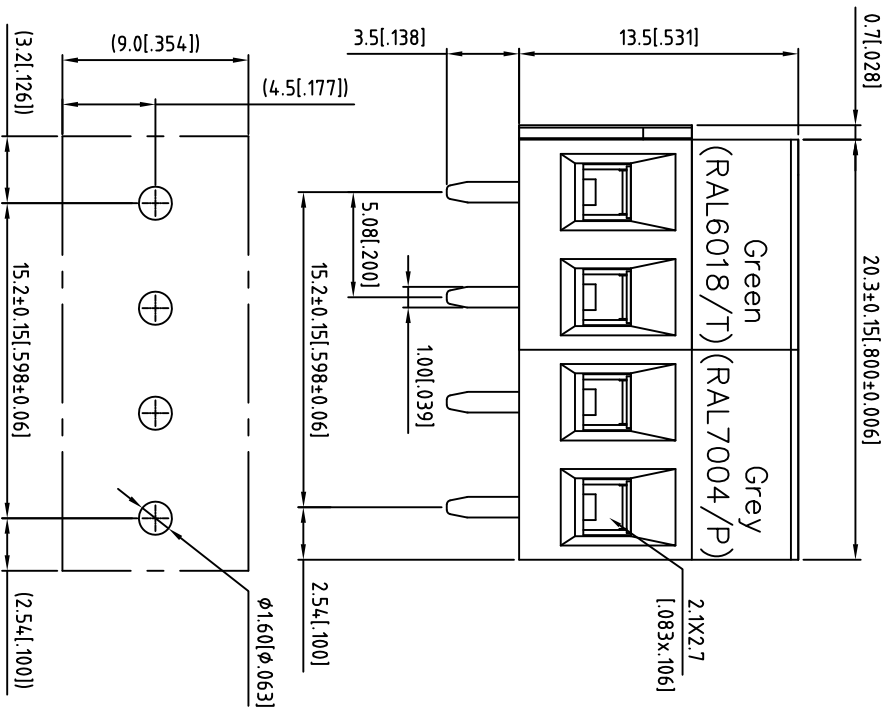
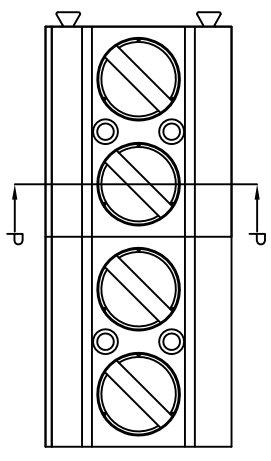
This document is the property of and embodies CONFIDENTIAL and PROPRIETARY information of FCI. No part of the information shown on this document may be used in any way or disclosed to others without the written consent of FCI.
Copyright FCI.



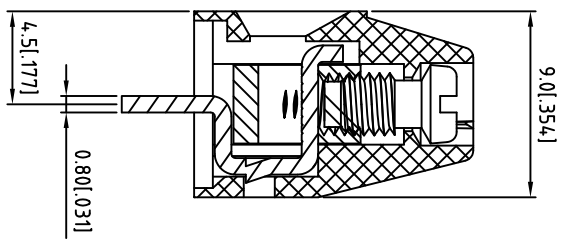
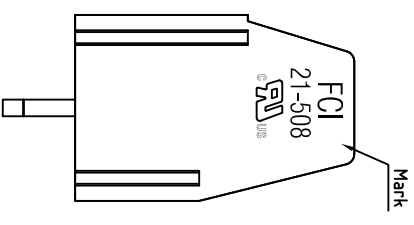
FCIconnect.com

FCI CONFIDENTIAL

PRODUCT NUMBER	SERIES NAME	PITCH	ASSEMBLY PARTS
20020336-H040B01LF	21-508	5.08 mm	2 x 2POS.



P.C.B LAYOUT



SECTION P-P

mat'l. code	surface	tolerance	projection	product family
ASME Y14.5	ASME Y14.5	ASME Y14.5	MM	TERMINAL BLOCK
tr	ecn no	dr	date	title
A				TERMINAL BLOCK
	angles	X.X±0.3		FIXED HORIZONTAL WIRE INLET
	dr	X.F±1		sheet 2 of
	engr	LEIF SHEN	011112	size
	chr	LEIF SHEN	011112	A4
	pppd	GARY HSIEH	011112	CUSTOMER Drawing
sheet	revision			
index	sheet			



B 1 2 3 4

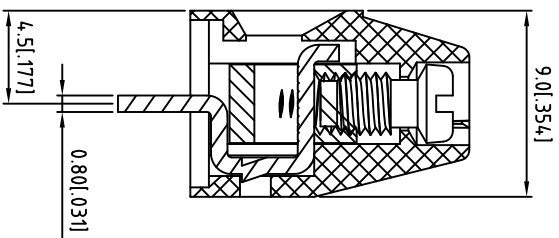
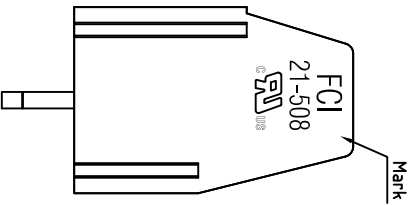
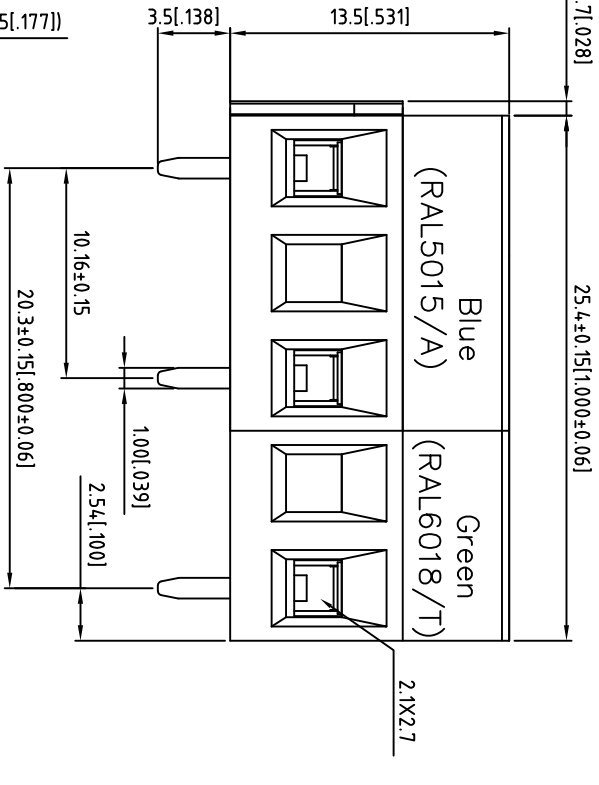
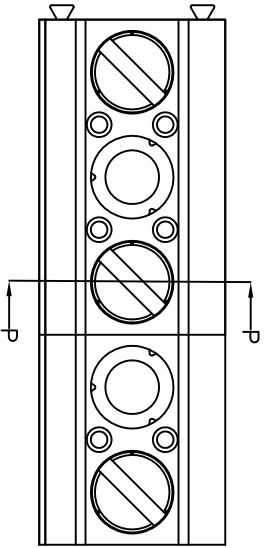
This document is the property of and embodies CONFIDENTIAL and PROPRIETARY information of FCI. No part of the information shown on this document may be used in any way or disclosed to others without the written consent of FCI.
 Copyright FCI.



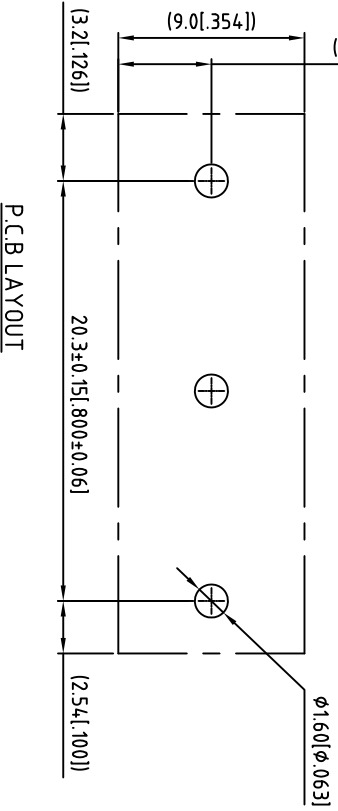
FCIconnect.com

FCI CONFIDENTIAL

PRODUCT NUMBER	SERIES NAME	PITCH	ASSEMBLY PARTS
20020336-4050B01LF	21-508	5.08 mm	1 x 2POS. + 1 x 3POS.



SECTION P-P



P.C.B LAYOUT

mat'l. code		surface	tolerance	projection	product family
ASME Y14.5		ASME Y14.5	ASME Y14.5	ASME Y14.5	TERMINAL BLOCK
itr	ecm no	dr	date	tolerances unless otherwise specified	title
A				X.X±0.5	TERMINAL BLOCK
				X.X±0.3	FIXED HORIZONTAL WIRE INLET
				X.F±.1	scale
				X.XX±0.1	dwg no
					20020336
					sheet 3 of
					A4
sheet	revision				CUSTOMER Drawing
index	sheet				