

PART NUMBER	REV	FIRST USED	TERMINATOR	FEED TYPE	DESCRIPTION
1339772-1	A		BENCH & LEADMAKER	MECH POST FEED	HD-I APPLICATOR
7-1339772-1	A		BENCH & LEADMAKER	MECH POST FEED	-1 AND SPARE PARTS
7-1339772-7	A		-	-	SPARE PARTS KIT

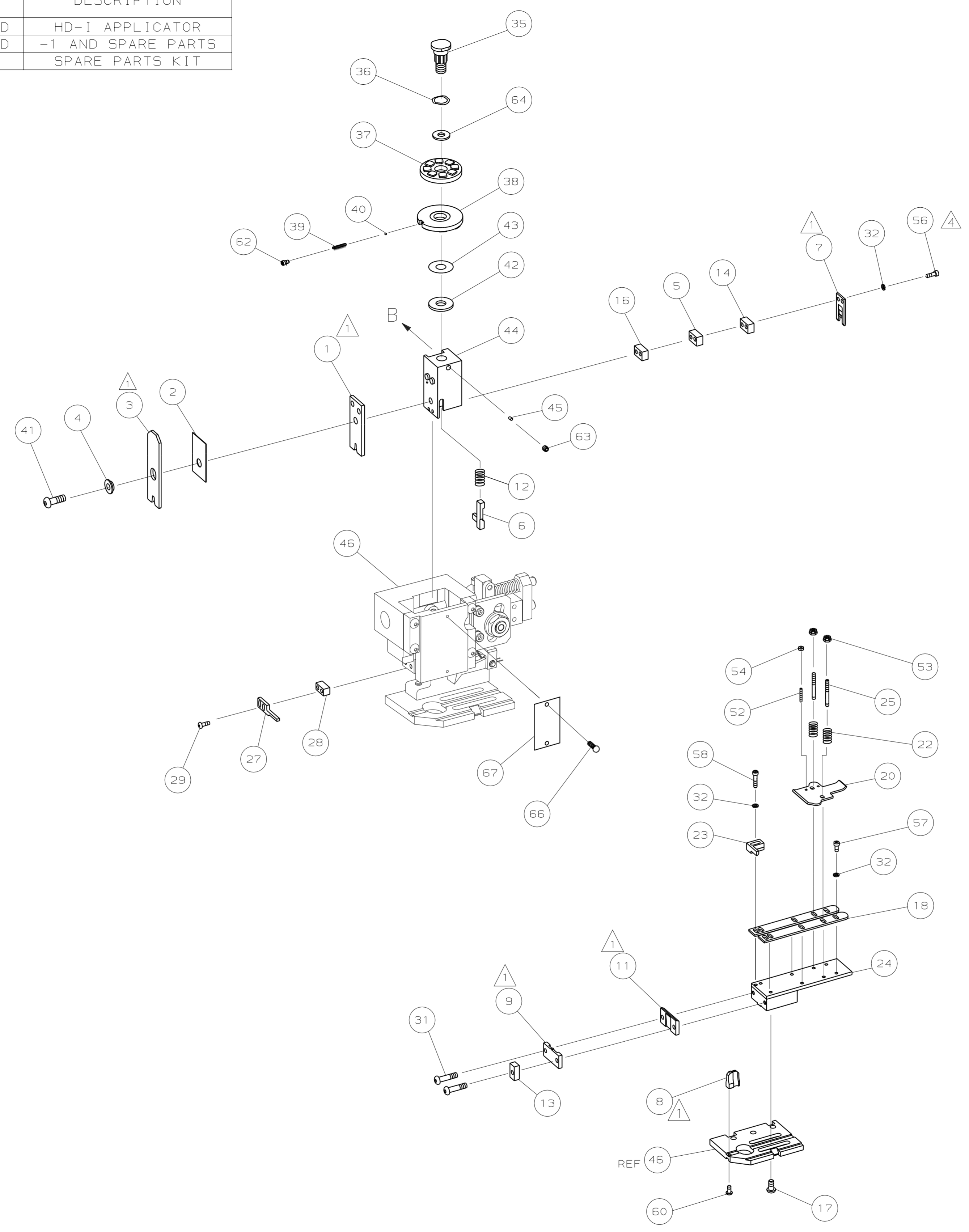
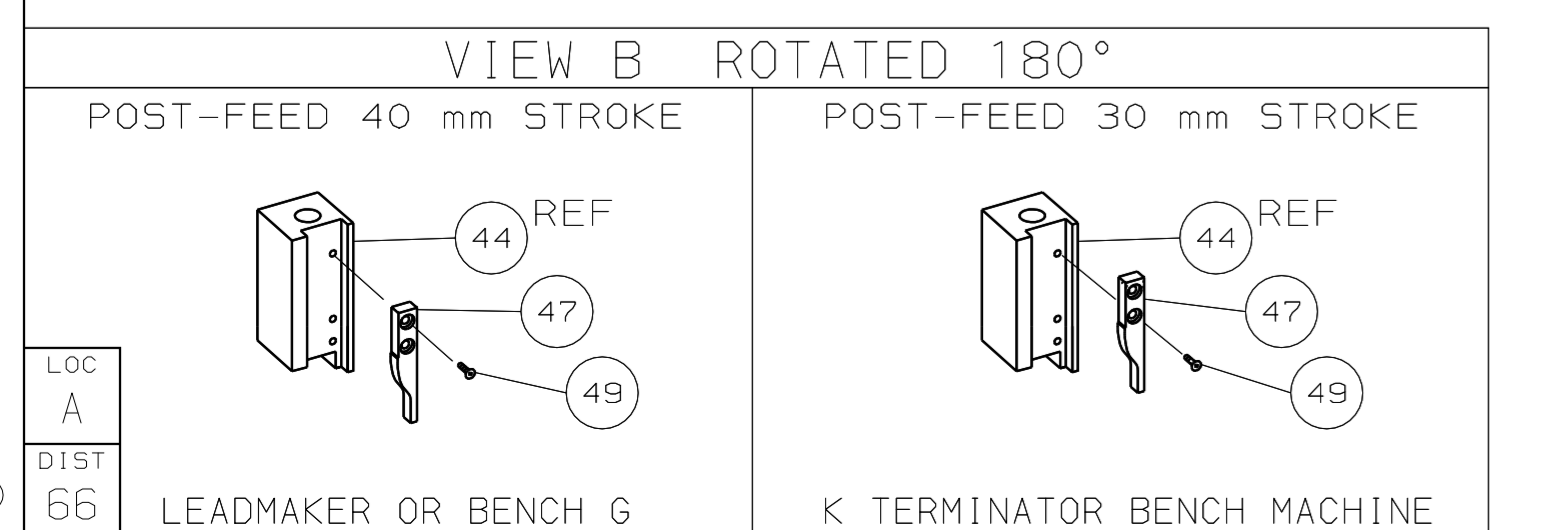
CRIMP DATA AMP TERMINAL AMP CRIMP SPECS			
TERMINAL NAME: TAB WITH LANCE MULTI-INTERLOCK CONN			
CRIMP	SIZE	TYPE	RANGE
WIRE	2.29 [0.090 IN]	F	20-14 AWG or 0.50-2.27mm <sup>2</sup>
INSUL	3.56 [1.140 IN]	F	2.16-3.43 [0.085-.135 IN]
WIRE STRIP LENGTH		APPL INSTRUCTION	
3.50-4.50 [1.138-.177 IN]		408-8323	

TERMINAL	FEED
APPL SPEC 114-5018	26.66 [1.050 IN]

TERMINALS APPLIED				
170221	-	-	-	-
-	-	-	-	-
-	-	-	-	-
-	-	-	-	-
-	-	-	-	-
-	-	-	-	-
-	-	-	-	-
-	-	-	-	-
-	-	-	-	-

WIRE SIZE mm <sup>2</sup> AWG	CRIMP HEIGHT	PIN PN AND LENGTH [IN]
2.00mm <sup>2</sup>	1.78 ± 0.05 [0.070 ± 0.002 IN]	8-354778-1 [1.2900]
1.25mm <sup>2</sup>	1.50 ± 0.05 [0.059 ± 0.002 IN]	354779-4 [1.3010]
0.85mm <sup>2</sup>	1.34 ± 0.05 [0.053 ± 0.002 IN]	1-354779-7 [1.3075]
0.50mm <sup>2</sup>	1.30 ± 0.05 [0.051 ± 0.002 IN]	2-354779-1 [1.3095]
-	-	-
-	-	-
-	-	-
-	-	-
-	-	-
-	-	-
-	-	-
-	-	-
-	-	-
-	-	-
-	-	-
-	-	-
-	-	-
-	-	-
-	-	-
-	-	-
-	-	-
-	-	-
-	-	-
-	-	-

- RECOMMENDED SPARE PARTS.
- 2. GREASE RAM, CAM, CAM FOLLOWER AND FEED ROD LIGHTLY.
- 3. LUBRICATE DAILY PER THE APPLICATOR INSTRUCTION SHEET SUPPLIED WITH THE APPLICATOR.
- CUT TO LENGTH AT ASSY.
- RANGE QUOTED IS THAT OF THE TERMINAL, NOT THE APPLICATOR.
- SEE APPLICATION SPECIFICATION FOR SPECIFIC WIRE DETAILS.



QTY REQD PER ASSY	ASSY LIST	PARTS LIST	ITEM NO
-	1	1339772	73
-	1	1338705-2	72
-	1		71
-	1		70
-	1		69
-	1		68
-	1	461264-1	67
-	2	21017-2	66
-	1		65
-	1	986950-1	64
-	1	3-18031-0	63
-	1	18023-9	62
-	1		61
-	1	18024-7	60
-	1		59
-	2	1-18023-3	58
-	5	1-18023-0	57
-	2	1-18023-5	56
-	1		55
-	2	18029-1	54
-	2	986965-1	53
-	2	2-18032-2	52
-	1		51
-	1	18024-3	50
-	1		49
-	1	1338676-1	48
-	1	1338662-1	47
-	1	690191-1	46
-	1	1320998-1	45
-	1	690125-1	44
-	1	690124-1	43
-	1	2-18024-6	42
-	1	23241-1	41
-	1	2-22278-7	40
-	1	1320922-1	39
-	1	354777-1	38
-	1	22480-5	37
-	1	690212-1	36
-	1		35
-	1		34
-	1		33
-	9	18025-2	32
-	2	4-18024-7	31
-	2	18024-8	30
-	1	3-690451-2	29
-	1	240639-1	28
-	1		27
-	1		26
-	2	1320906-1	25
-	1	1320995-1	24
-	1	240825-2	23
-	2	4-22281-1	22
-	1		21
-	1	1338665-1	20
-	2	1338663-6	19
-	4	1-18024-8	18
-	1	1338708-1	17
-	1		16
-	1		15
-	1	2-240641-0	14
-	1	1-690481-0	13
-	1	23846-1	12
-	1	240644-1	11
-	1		10
-	1	690482-5	9
1	2	4-1333217-3	8
-	1	690474-5	7
-	1	5-455892-0	6
-	1	6-240641-8	5
-	1	238009-1	4
1	2	1-456134-4	3
-	1	455888-6	2
1	2	4-456406-7	1
-	-	-	-
-77	-71	-1	-

REMOVE BURRS, BREAK SHARP EDGES RO.38 MAX

DIMENSIONS: mm [INCHES] MATL - HT TR - FIN - DO NOT SCALE PRINT. TOLERANCES UNLESS OTHERWISE SPECIFIED: 1 PLC DEC ± - 2 PLC DEC ± - 3 PLC DEC ± - ANGLES ± - SURF TEXTURE:  REMOVE BURRS, BREAK SHARP EDGES RO.38 MAX

DR M. CLIFFORD	APP F. BACKHURST	DATE 28 JUN 05	DATE 28 JUN 05
CHK -	REL 26 JUL 05	DATE 26 JUL 05	DATE 26 JUL 05

NAME: END FEED HD-I APPLICATOR MACHINE REF: HD-I APPL

SCALE: - DWG NO: 1339772 SHEET 1 OF 1 REV A

CAGE CODE: 00779 CUSTOMER AND ASSEMBLY DRAWING

THIS DRAWING IS A CONTROLLED DOCUMENT.

LAYOUT L1339772

SET UP GAGE 458638-3

THIS DRAWING IS UNRELEASABLE. RELEASE FOR PUBLICATION BY AMP INCORPORATED. ALL RIGHTS RESERVED.