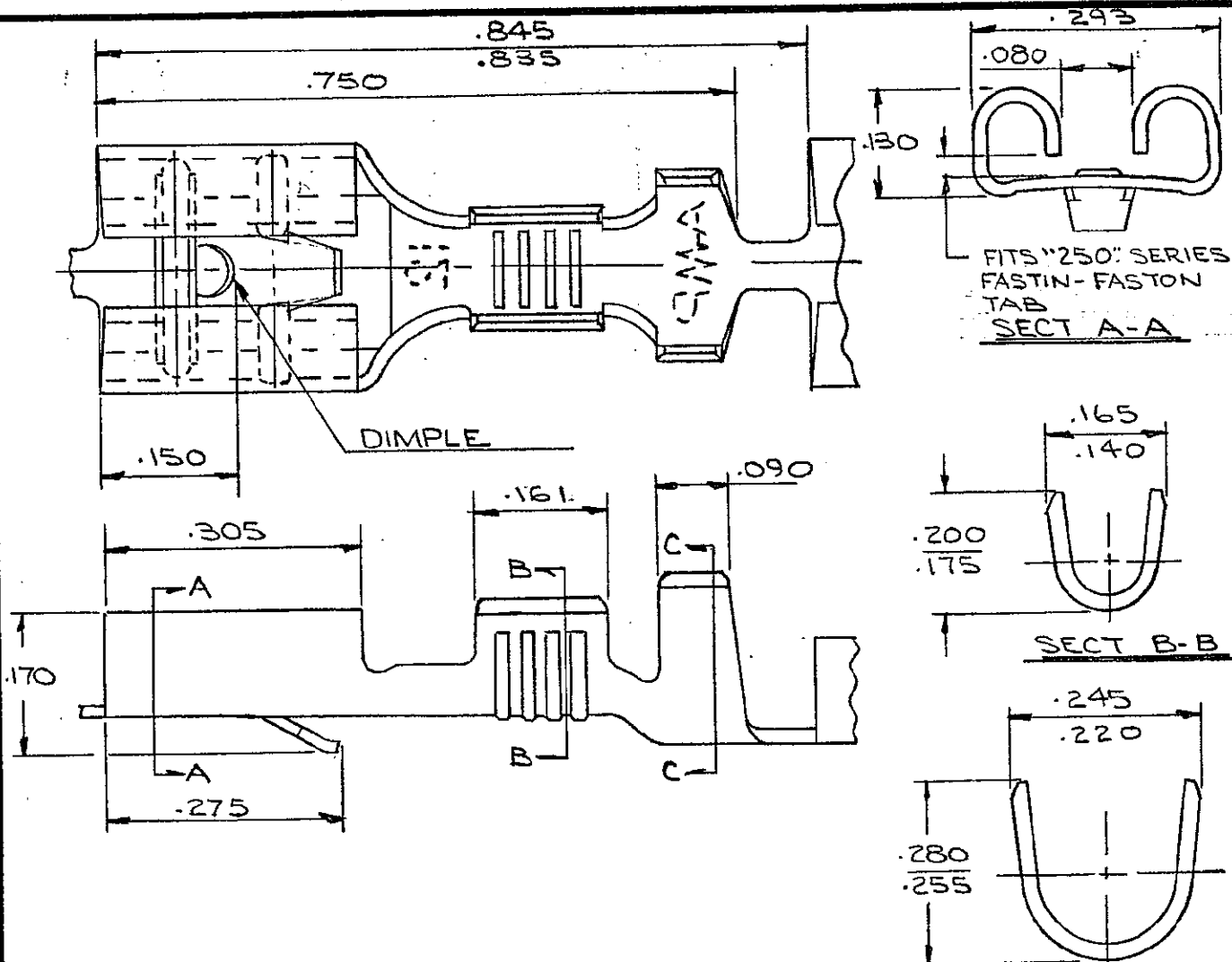


42904



FITS "250" SERIES
FASTIN-FASTON
TAB
SECT A-A

SECT B-B

SECT C-C

CONTINUOUS STRIP, ON REELS

WIRE SIZE AWG	INSULATION RANGE	TAB THK. ±.001	MATERIAL AND FINISH	TERMINAL NUMBER
16-12	.150-.190	.032	.016 BRASS - NONE	42904-1
			.016 BRASS - TIN	42904-2
			.016 BRASS - SILVER	42904-3

SUPERSEDED BY 60249-2

PRINT LAST 50 DIMENSIONS IN INCHES. DO NOT SCALE PRINT.

E1 REV PER ECO-09-026346				KK AEG 18DEC09		©1965 BY AMP INCORPORATED, ALL RIGHTS RESERVED. AMP PRODUCTS COVERED BY PATENTS AND/OR PATENTS PENDING.		CUSTOMER COPY REFERENCE ONLY	
E OBS-3 ^{PER} 0210-0208-97				AR RDD 5/19/97		MATERIAL AND FINISH		AMP INCORPORATED HARRISBURG, PENNA.	
D ADD STAMP 12				EW DSA 5-19-97 A-3017				CLASS	
C LANCE CHANGE				VEN XLD 7/9/67 A-1001				WIRE RANGE INSULATION TYPE	
B REDRAWN & REVISED				CM RA 4/1/65 A-47				TYPE	
LTR	REVISION RECORD	DR	CHK	DATE	TOLERANCE EXCEPT AS NOTED ± .015	SCALE 5-1	LOC A	NO 42904	REV E1
DR C. MEYERS 6-7-65				DE [Signature] 6/1/65		NAME "250" SERIES FASTIN-FASTON RECEPTACLE			
CHK R. SVENDEL JR 6-8-65				APP [Signature] 6/14/65					