

## DETAILS

<b>Product Number</b>	CA12238_STRADA-FW
<b>Family</b>	Strada
<b>Type</b>	Assembly
<b>Color</b>	clear
<b>Diameter</b>	19,6+15,5 mm
<b>Height</b>	11,35 mm
<b>Style</b>	rectang
<b>Optic Material</b>	
<b>Holder Material</b>	
<b>Fastening</b>	tape, screw, pin
<b>Status</b>	production ready
<b>ROHS Compliant</b>	Yes
<b>Date Updated</b>	7/03/2014



## OPTICAL PROPERTIES

LED	Viewing	Light	Efficiency	cd/lm	Connector
	Angle	Beam			
MX-3	Asymmetric deg	Asymmetric	92 %	-	-
MX-6	Asymmetric deg	Asymmetric	92 %	-	-
NS6x83	Asymmetric deg	Asymmetric	92 %	-	-
NS3x83	Asymmetric deg	Asymmetric	92 %	-	-
OLP-5065F6L-06A	Asymmetric deg	Asymmetric	90 %	0.580	-

D

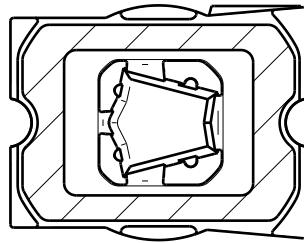
C

B

A

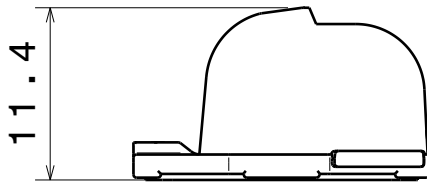
4

4



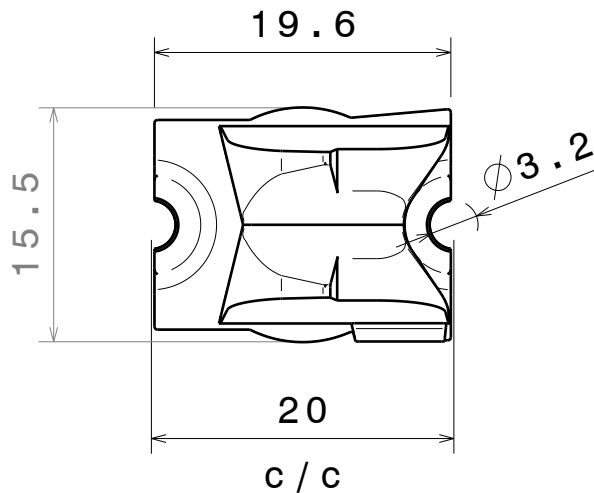
3

3



2

2



Top view  
Scale: 2:1

MATERIALS  
Lens: PMMA  
tape: Pu foam with PSA

This drawing is our property.  
It can't be reproduced  
or communicated without  
our written agreement.



Ledil Oy  
Salorankatu 10  
24240 SALO  
Finland

DRAWING TITLE

Datasheet Strada-FW-N83 assy

DRAWN BY

pv

DATE

23.8.2011

CHECKED BY

ah

DATE

22.8.2011

SIZE

A4

DRAWING NUMBER

CA12238

REV

1

DESIGNED BY

hh

DATE

22.8.2011

SCALE

2:1

WEIGHT (g)

SHEET

1/1

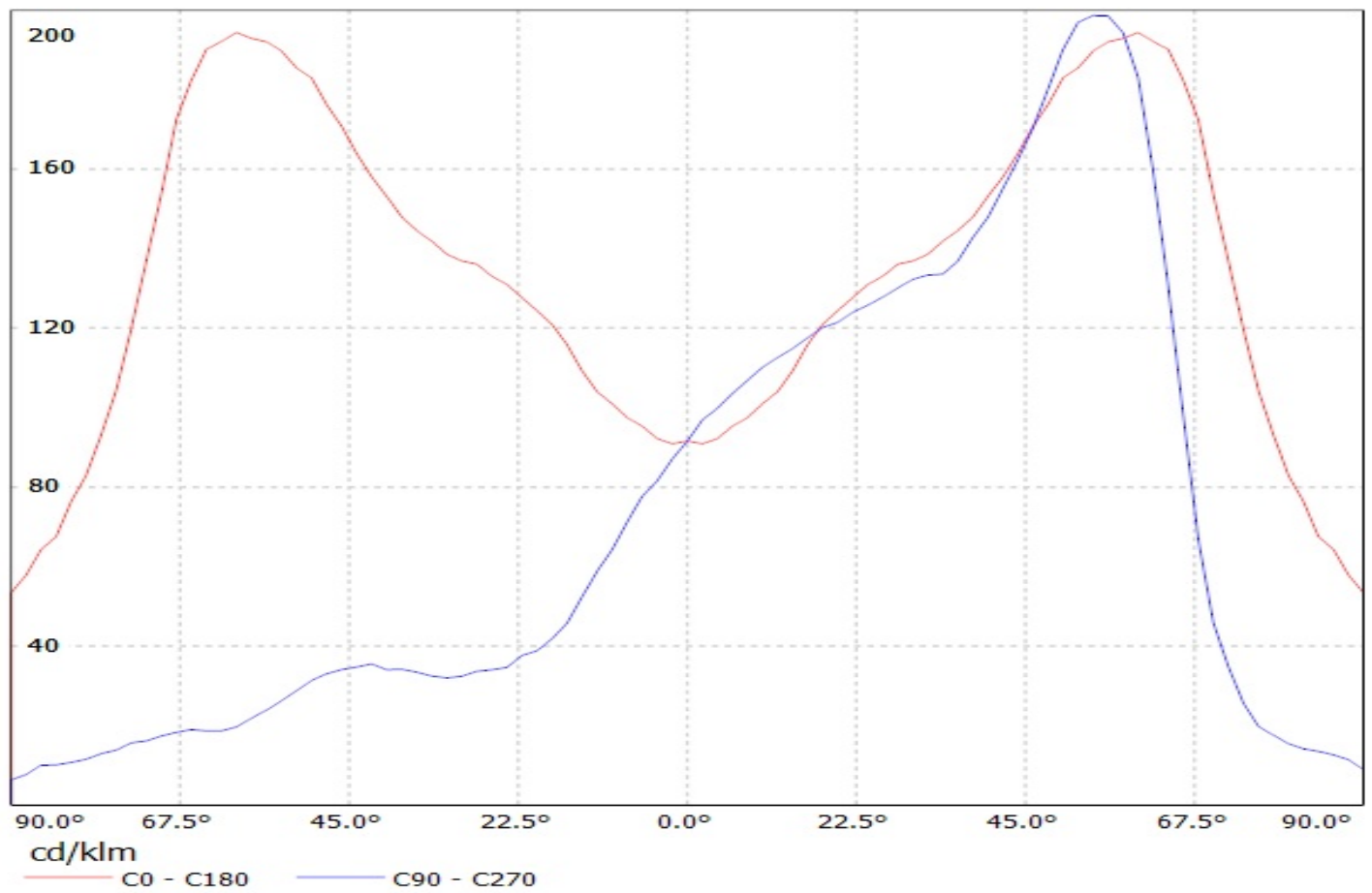
D

A

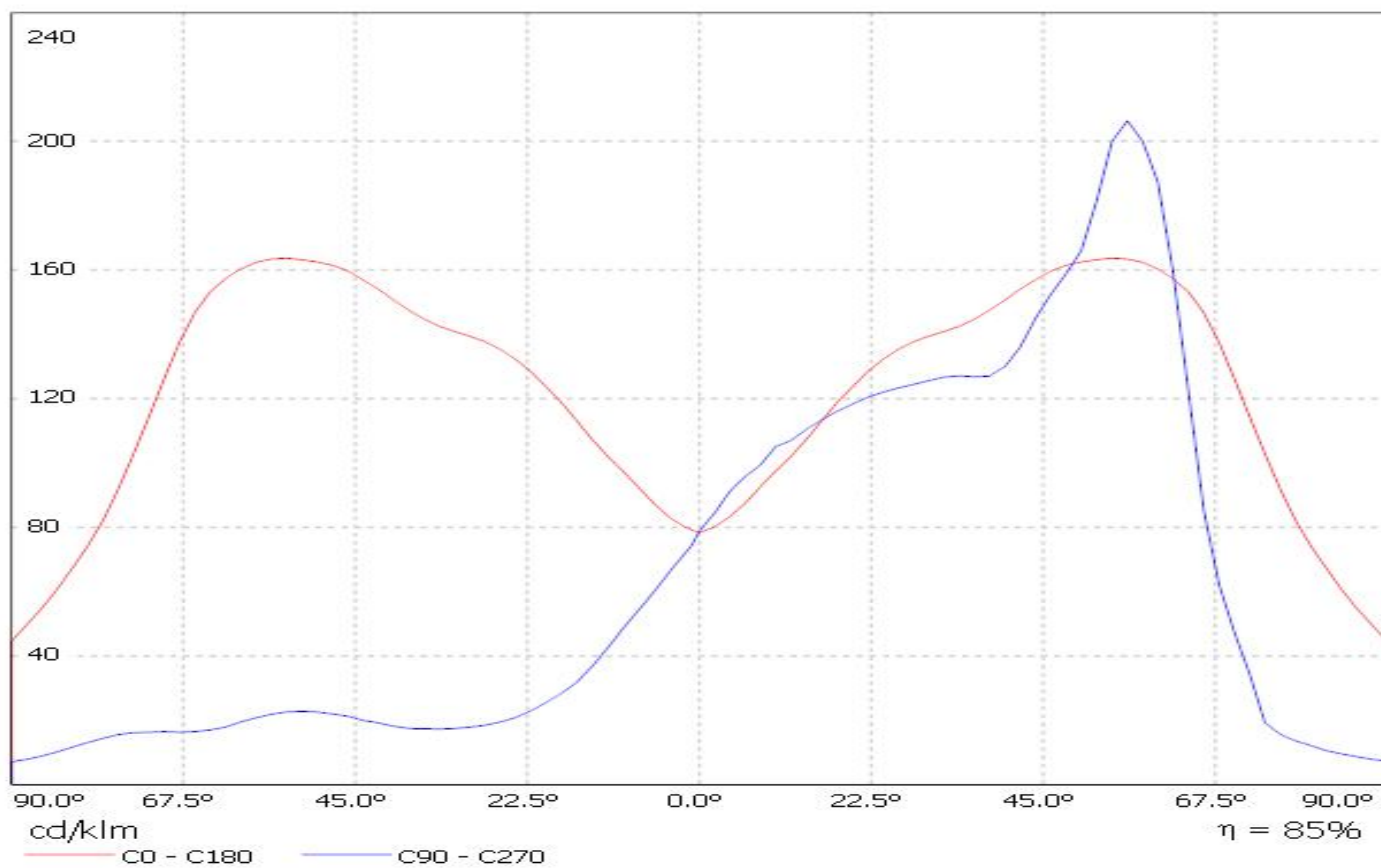
1

1

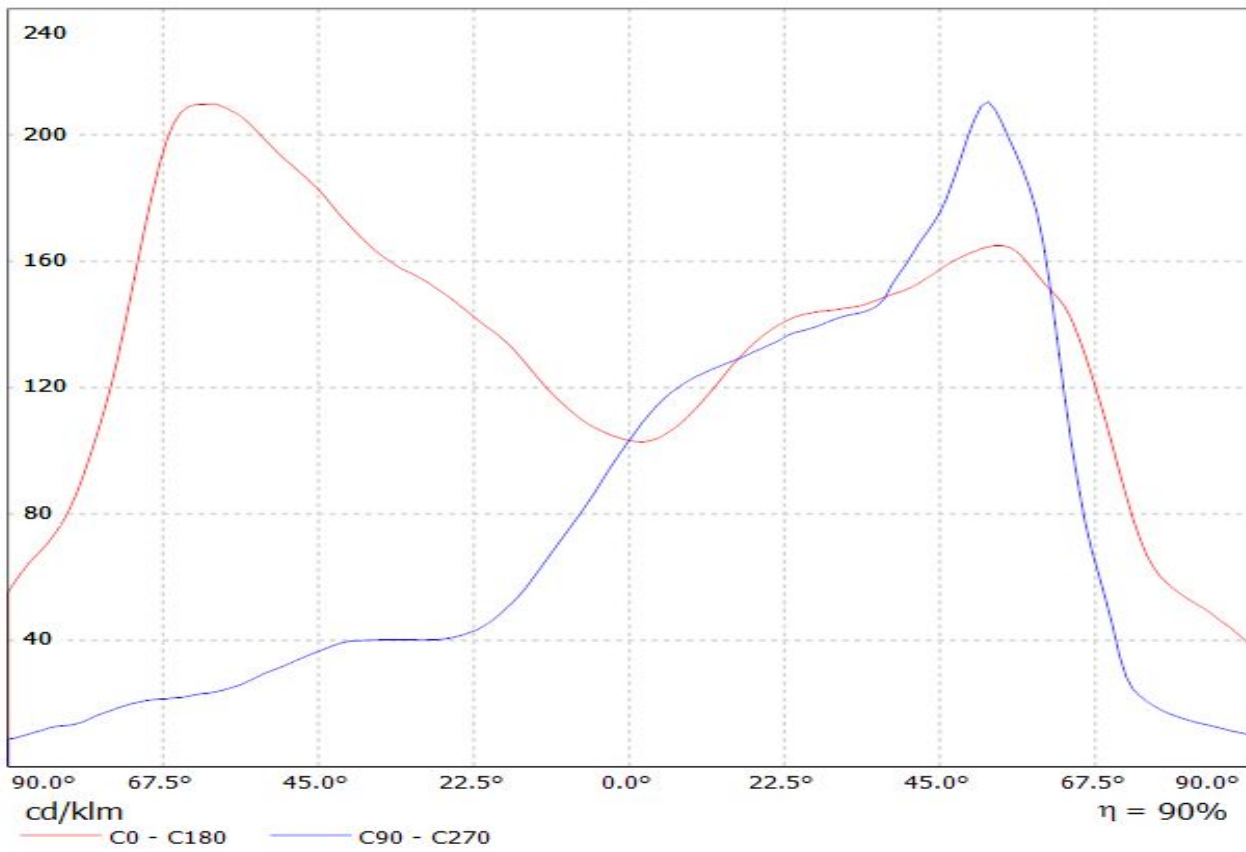
Luminaire: Ledil Oy C12226\_STRADA-FW-MX6 LOR=92%  
Lamps: 1 x Cree MX6 67lm 250mA



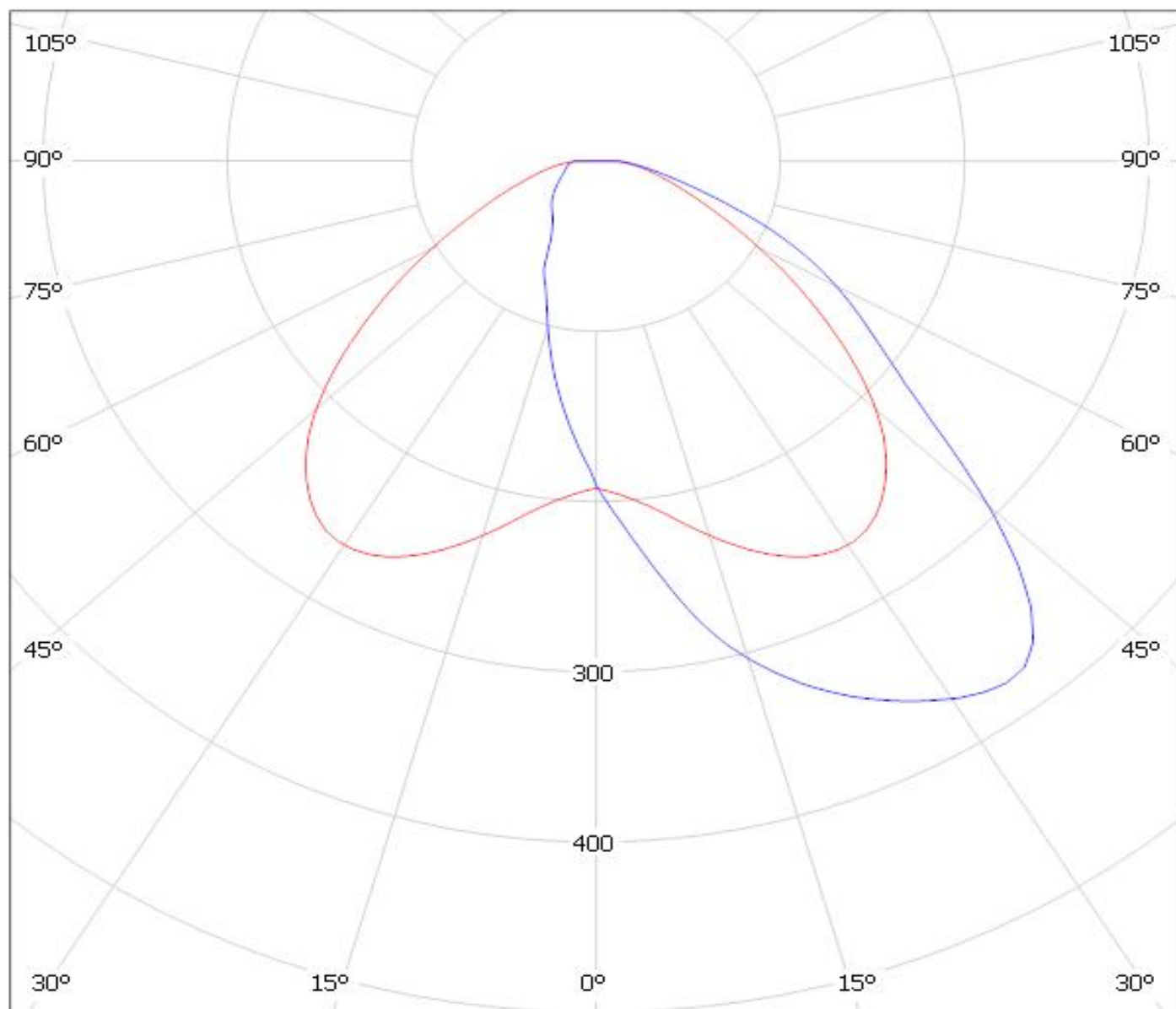
Luminaire: Ledil Oy C12226\_Strada-FW\_N083 C12226\_Strada-FW\_N083  
Lamps: 1 x Nichia N083 6chip white



Luminaire: LEDiL Oy CA12238\_STRADA-FW\_(OLP-5065F6L-06A) Eff.90.1%  
Lamps: 1 x OPTOGAN\_(OLP-5065F6L-06A-80-D05O0) 106.528lm@250mA CCT=5000K P=0.777664W I=249.9mA



Luminaire: Ledil Oy CA11817\_Strada-SQ-T-DN-XP-G-TAPE CA11817\_Strada-SQ-T-DN-XP-G-TAPE  
Lamps: 1 x Cree XP-G white



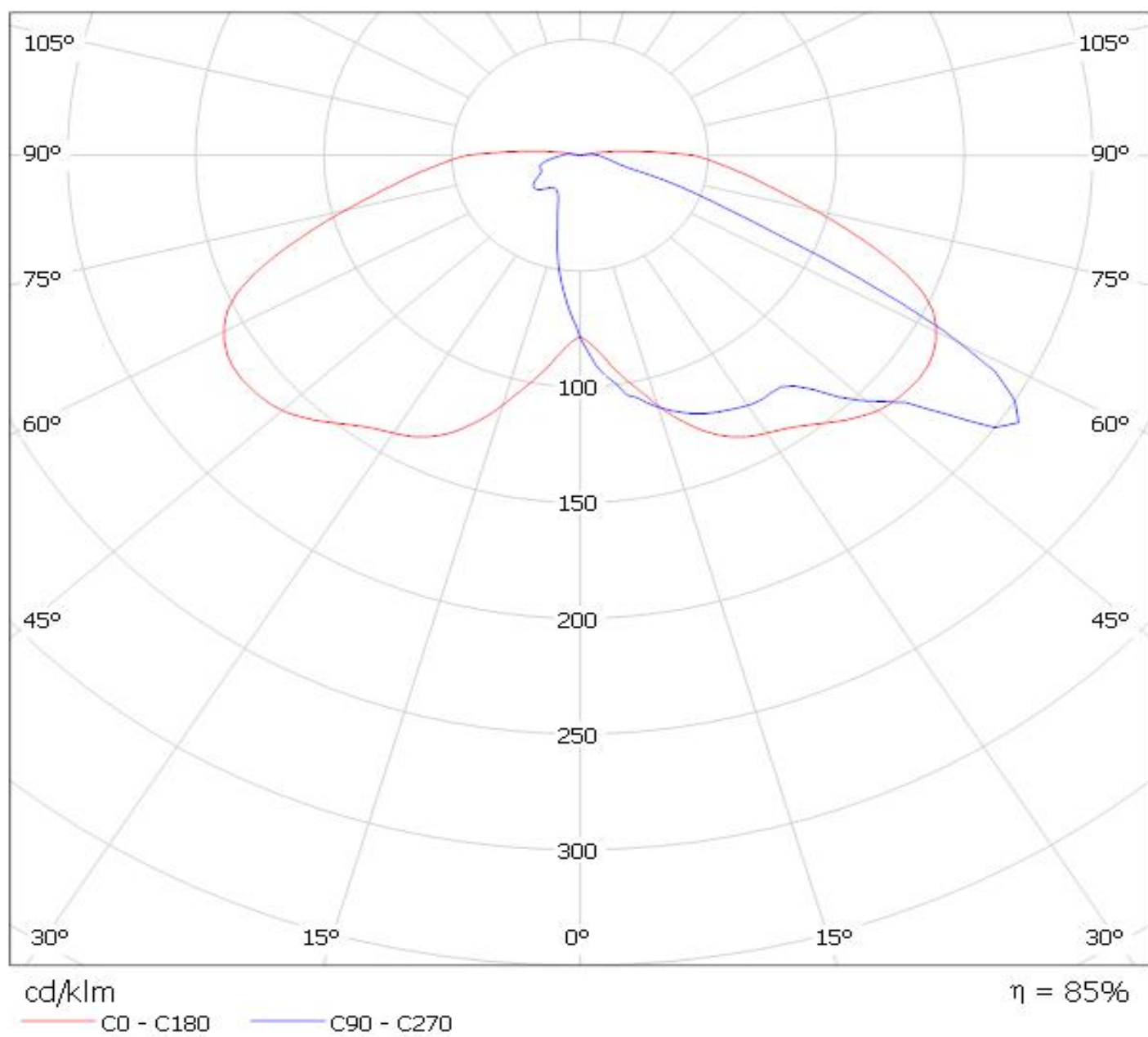
cd/klm

— C0 - C180

— C90 - C270

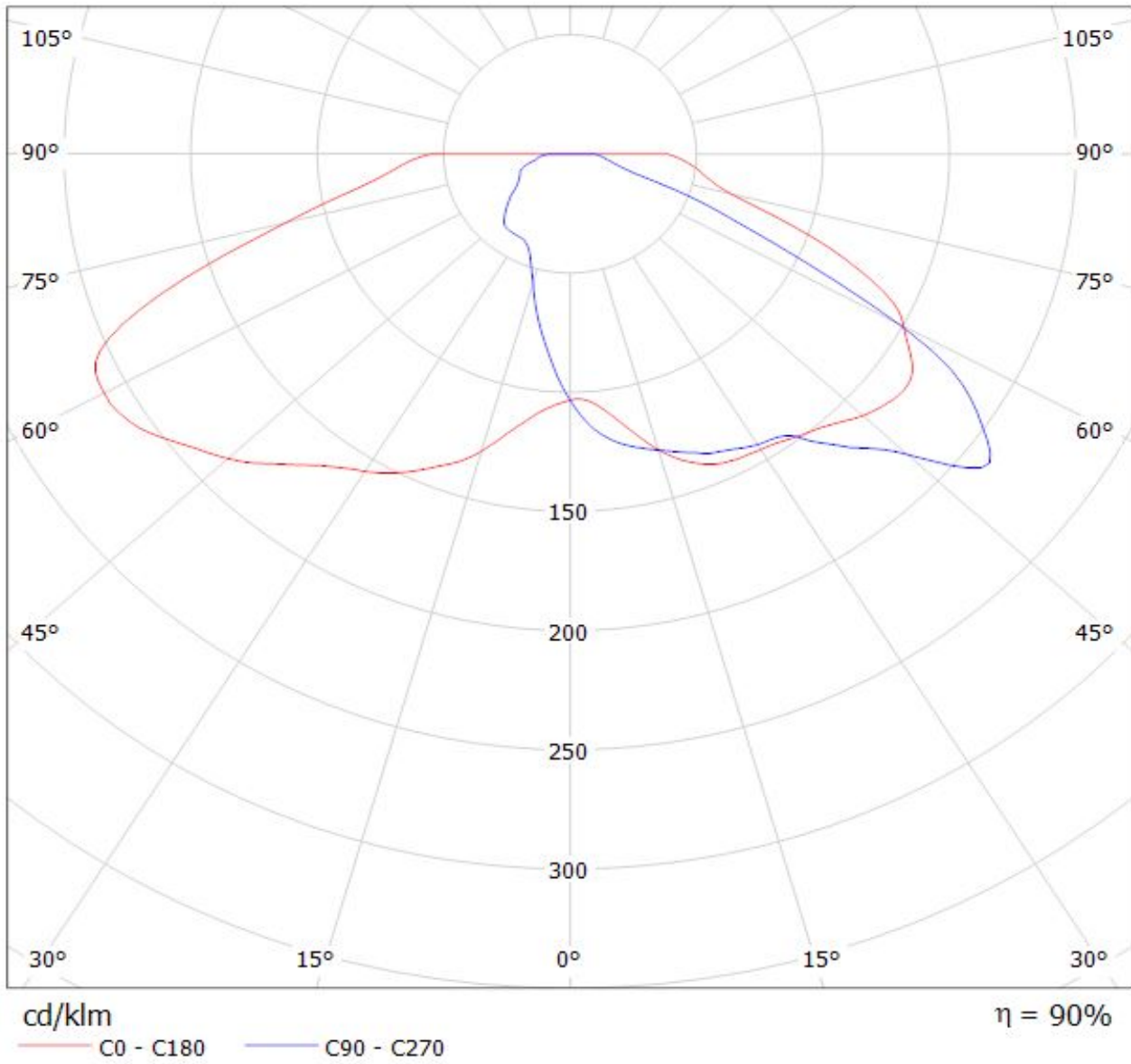
$\eta = 79\%$

Luminaire: Ledil Oy C12226\_Strada-FW\_N083 C12226\_Strada-FW\_N083  
Lamps: 1 x Nichia N083 6chip white



Luminaire: LEDiL Oy CA12238\_STRADA-FW\_(OLP-5065F6L-06A) Eff.90.1%

Lamps: 1 x OPTOGAN\_(OLP-5065F6L-06A-80-D0500) 106.528lm@250mA CCT=5000K P=0.777664W I=249.9mA





**NOTE: The typical divergence will be changed by different color, chip size and chip position tolerance. The typical total divergence is the full angle measured where the luminous intensity is half of the peak value.**